

AXIS 360

COMMERCIAL REAL ESTATE

3001½ Gill St.
Suite A
Bloomington, Illinois

www.axis360.co



FOR SALE or LEASE - Freestanding Day Care / Restaurant

ADDRESS

2 River Run
Downs, Illinois

BUILDING SIZE

5,100 sq. ft.

ASKING PRICE

\$375,000

LEASE RATE

\$10.75/sq. ft. (Modified Gross)

ZONING

C-2 (Village of Downs)

SITE SIZE

.79 acres

PARCEL #s (4 Parcels)

29-04-377-019 thru -022

Terrific commercial building currently consisting of kitchen/restaurant and day care space with outdoor play area. Easily accessible, located right off the I-74 Downs interchange. Land size is estimated, does not include 16,000 sf of vacant ground, which is available separately.



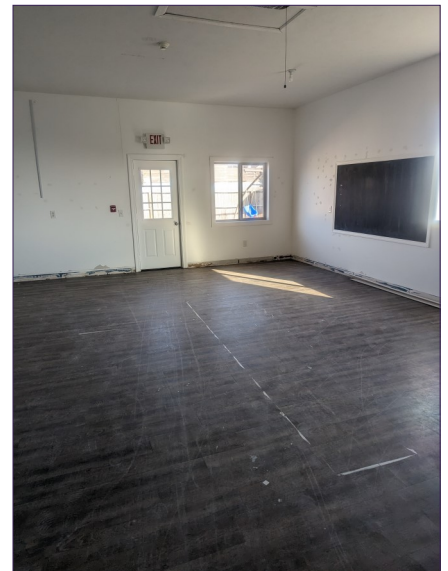
Laura Pritts
Designated Managing Broker
lpritts@axis360.co
(309) 824-0507

Visit our Website:
www.axis360.co





Former Day Care Space





3001½ Gill St.
Suite A
Bloomington, Illinois
www.axis360.co

Visit our Website:



Former Restaurant/Bar Space



Laura Pritts, Designated Managing Broker

lpritts@axis360.co

(309) 824-0507

