

Leather District

Private, direct entrance



# For Lease

107 South Street,  
Boston, MA

**Up to 4,112 SF of Brick & Beam  
Style Loft Space for Lease**

## Premises:

Lower Level 1 | 1,633 SF

Lower Level 2 | 2,479 SF

\* contiguous up to 4,112 SF

**Available:** Immediately

## Highlights:

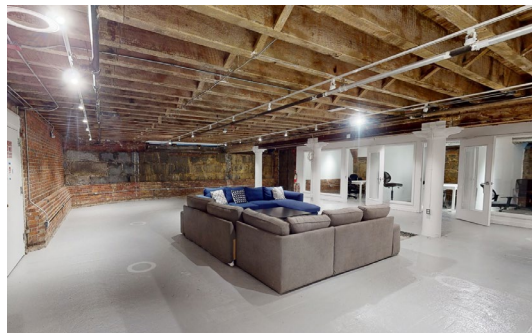
- > Direct South Street access
- > Ample Storage
- > Internal Restrooms
- > Access to Elevator
- > Refinished Hardwood Floors
- > New Lighting Fixtures
- > Conference Rooms
- > Convenient Access to South Station
- > Aggressive Rental Rate



[Virtual Tour  
Lower Level 1](#)



[Virtual Tour  
Lower Level 2](#)





# Creative space with ample natural light

Available Immediately

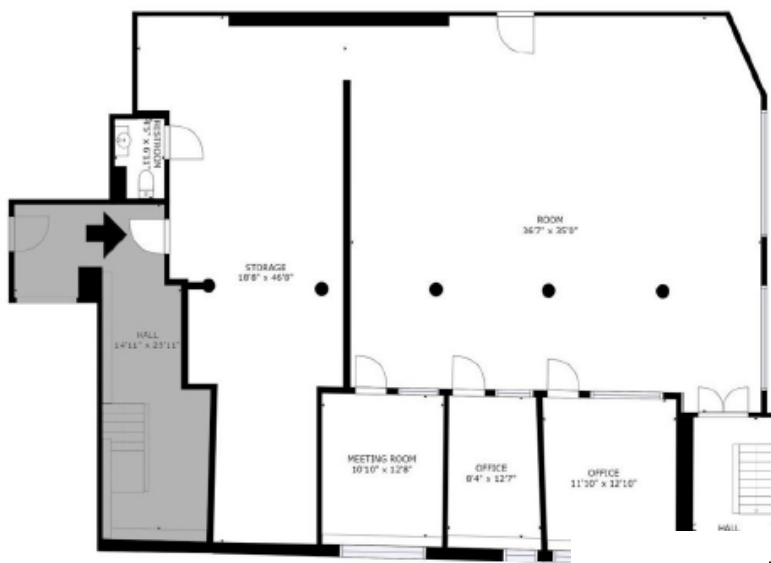
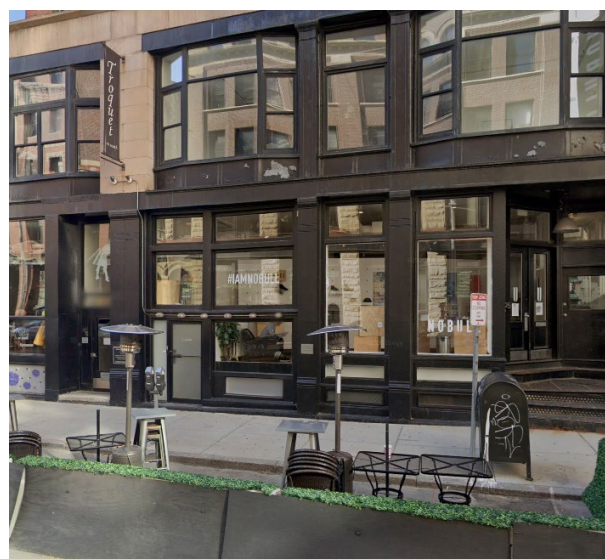
## Lower Level 1: 1,653 SF



Private direct entrance

Internal Stair

## Lower Level 2: 2,479 SF



For more information, contact:

Sarah Griffith  
+1 203 331 5582  
[Sarah.Griffith@jll.com](mailto:Sarah.Griffith@jll.com)

Grace Kenney  
+1 508 361 2266  
[Grace.Kenney@jll.com](mailto:Grace.Kenney@jll.com)