

890 CRENSHAW BLVD, LOS ANGELES, CA 90005



# HOUSE FOR LEASE

LEASE RATE

**\$5,600** PER MONTH



## UNIT OVERVIEW

Size **2,436 SQ.FT.**

Zoning **R3-1**



**4**

Bedrooms



**3**

Bathrooms



3255 Wilshire Blvd #703  
Los Angeles, CA 90010



**Philip Park**

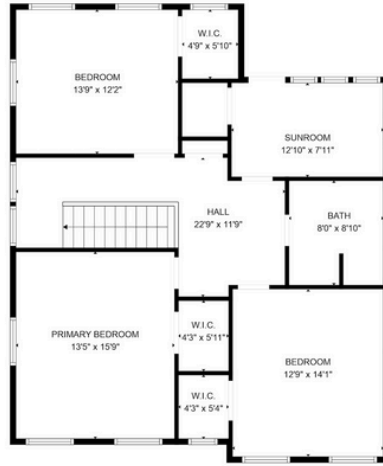
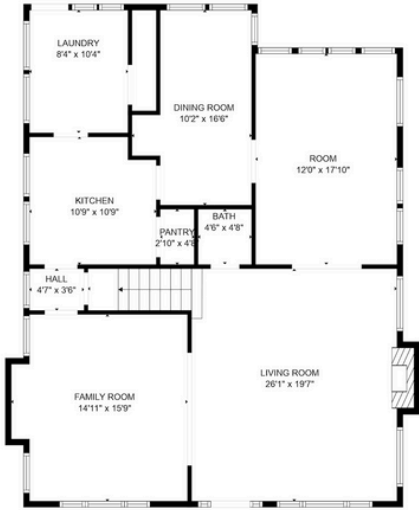
CaDRE# 00821167

**213-926-1257**

ppark@korusre.com

Broker/Agent does not guarantee the accuracy of the square footage, lot size or other information concerning the conditions or features of the property provided by the seller or obtained from Public Records or other sources. Buyer is advised to independently verify the accuracy of all information through personal inspection and with appropriate professionals. Information deemed reliable but not guaranteed.

## SITE PLAN



## PROPERTY HIGHLIGHTS

- Two(2) story residential house
- Commercial uses may be possible\*
- Ample parking (Front & Rear)
- Enclosed carport in the backyard
- Move-In condition

\*Tenant to independently verify their proposed use with the City of Los Angeles.

