

PROPERTY FEATURES

BUILDING SIZE:

±2,900 sq.ft.

LOT SIZE

±1.32 Acres (±57,499 sq.ft.)

PARCELS

APN: 0268-191-26

ZONING

Special Development-Commercial (SD-COM) per the County of San Bernardino, CA

FOR SALE

2760 N. STATE ST. SAN BERNARDINO, CA 92407

N. State St.



PROPERTY HIGHLIGHTS

- Rectangular Lot
- Flat Topography
- Partially Lit Yard
- Truck and Trailer Repair Use – Allowed (Minor Use Permit in Process – Verify)
- Great access to the I-210 Freeway from the State St. On/Off Ramp, and Minutes from the I-215 & I-10 Freeways



**INLAND
EMPIRE**

CAL DRE # 02120868

KW COMMERCIAL
3595-1 Inland Empire
Blvd. Suite 1250
Ontario, CA 91764
909.980.6868

Rene Ramos, Jr.
909.980.6868
Rene.Ramos@kwcommercial.com
CalDRE Lic. #01836872

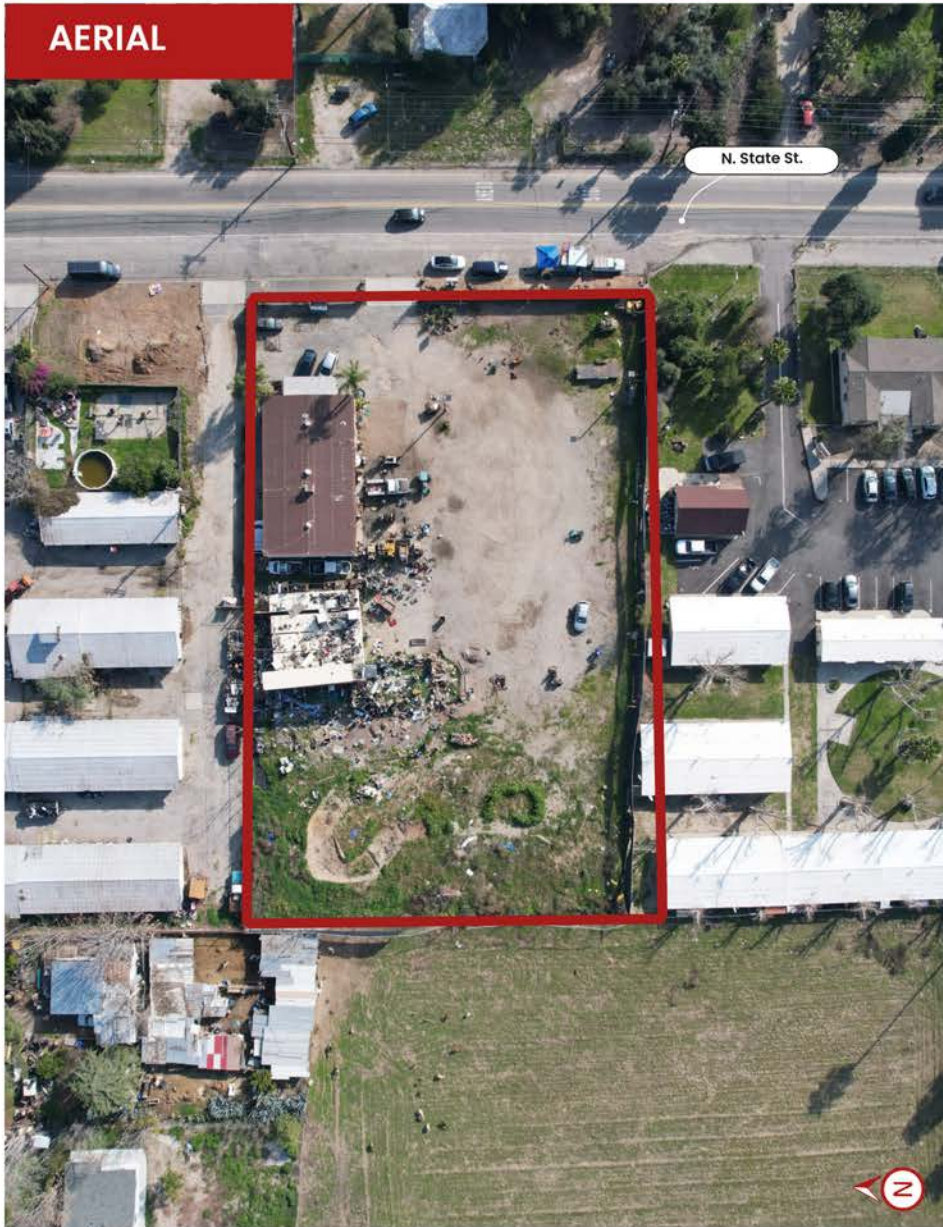
Jacob B. Bernardy
909.935.0935
Jacob.Bernardy@kwcommercial.com
CalDRE Lic. #02039512

Robert D. Bagley III
909.935.0938
Robert.Bagley@kwcommercial.com
CalDRE Lic. #02131874

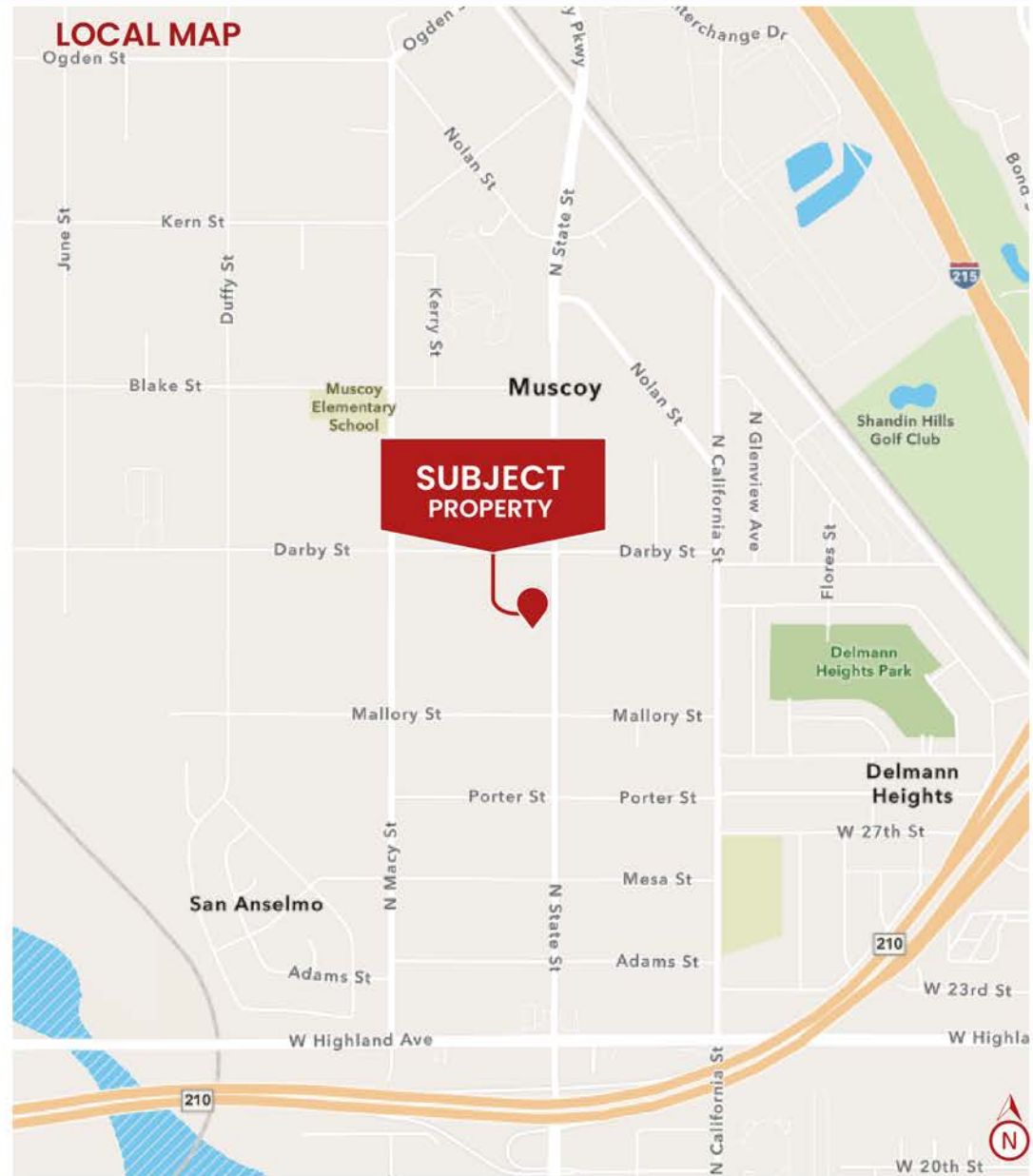
Daniel W. Richards
909.980.6868
Daniel.Richards@kwcommercial.com
CalDRE Lic. #00803221

WE OBTAINED THE INFORMATION ABOVE FROM SOURCES WE BELIEVE TO BE RELIABLE. HOWEVER, WE HAVE NOT VERIFIED ITS ACCURACY AND MAKE NO GUARANTEE, WARRANTY, OR REPRESENTATION ABOUT IT. IT IS SUBMITTED SUBJECT TO THE POSSIBILITY OF ERRORS, OMISSIONS, CHANGE OF PRICE, RENTAL OR OTHER CONDITIONS, PRIOR SALE, LEASE OR FINANCING, OR WITHDRAWAL WITHOUT NOTICE. WE INCLUDE PROJECTIONS, OPINIONS, ASSUMPTIONS OR ESTIMATES FOR EXAMPLE ONLY, AND THEY MAY NOT REPRESENT CURRENT OR FUTURE PERFORMANCE OF THE PROPERTY. YOU AND YOUR TAX AND LEGAL ADVISORS SHOULD CONDUCT YOUR OWN INVESTIGATION OF THE PROPERTY AND TRANSACTION.

AERIAL



LOCAL MAP



Rene Ramos, Jr.
909.980.6868
Rene.Ramos@kwcommercial.com
CalDRE Lic. #01836872

Jacob B. Bernardy
909.935.0935
Jacob.Bernardy@kwcommercial.com
CalDRE Lic. #02039512

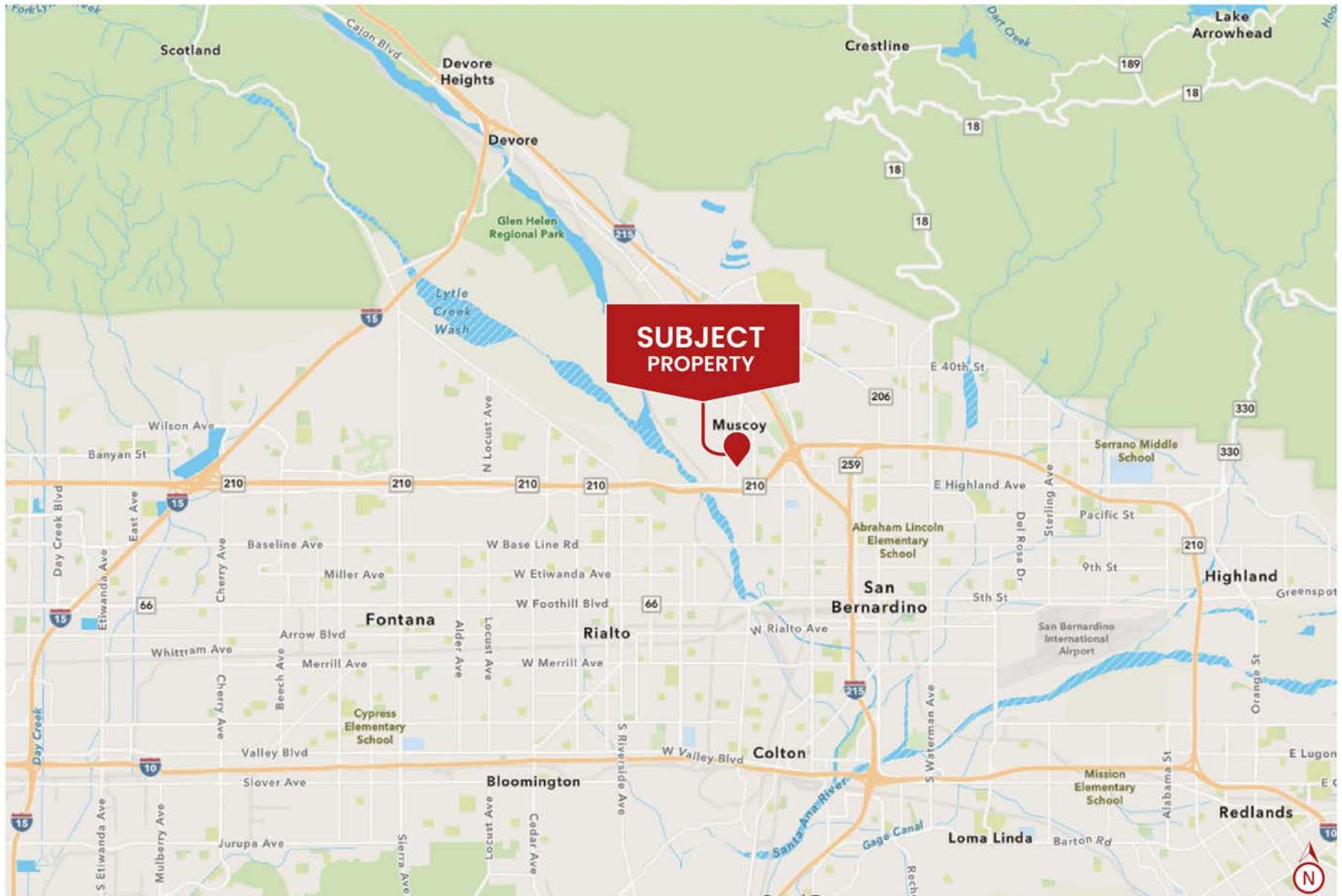
Robert D. Bagley III
909.935.0938
Robert.Bagley@kwcommercial.com
CalDRE Lic. #02131874

Daniel W. Richards
909.980.6868
Daniel.Richards@kwcommercial.com
CalDRE Lic. #00803221



**INLAND
EMPIRE**

CAL DRE # 02120868



Rene Ramos, Jr.
909.980.6868
Rene.Ramos@kwcommercial.com
CalDRE Lic. #01836872

Jacob B. Bernardy
909.935.0935
Jacob.Bernardy@kwcommercial.com
CalDRE Lic. #02039512

Robert D. Bagley III
909.935.0938
Robert.Bagley@kwcommercial.com
CalDRE Lic. #02131874

Daniel W. Richards
909.980.6868
Daniel.Richards@kwcommercial.com
CalDRE Lic. #00803221



**INLAND
EMPIRE**

CAL DRE # 02120868



Rene Ramos, Jr.
909.980.6868
Rene.Ramos@kwcommercial.com
CalDRE Lic. #01836872

Jacob B. Bernardy
909.935.0935
Jacob.Bernardy@kwcommercial.com
CalDRE Lic. #02039512

Robert D. Bagley III
909.935.0938
Robert.Bagley@kwcommercial.com
CalDRE Lic. #02131874

Daniel W. Richards
909.980.6868
Daniel.Richards@kwcommercial.com
CalDRE Lic. #00803221



INLAND
EMPIRE

CAL DRE # 02120868



Rene Ramos, Jr.
909.980.6868
Rene.Ramos@kwcommercial.com
CalDRE Lic. #01836872

Jacob B. Bernardy
909.935.0935
Jacob.Bernardy@kwcommercial.com
CalDRE Lic. #02039512

Robert D. Bagley III
909.935.0938
Robert.Bagley@kwcommercial.com
CalDRE Lic. #02131874

Daniel W. Richards
909.980.6868
Daniel.Richards@kwcommercial.com
CalDRE Lic. #00803221



**INLAND
EMPIRE**

CAL DRE # 02120868