

# Dania Beach, Florida

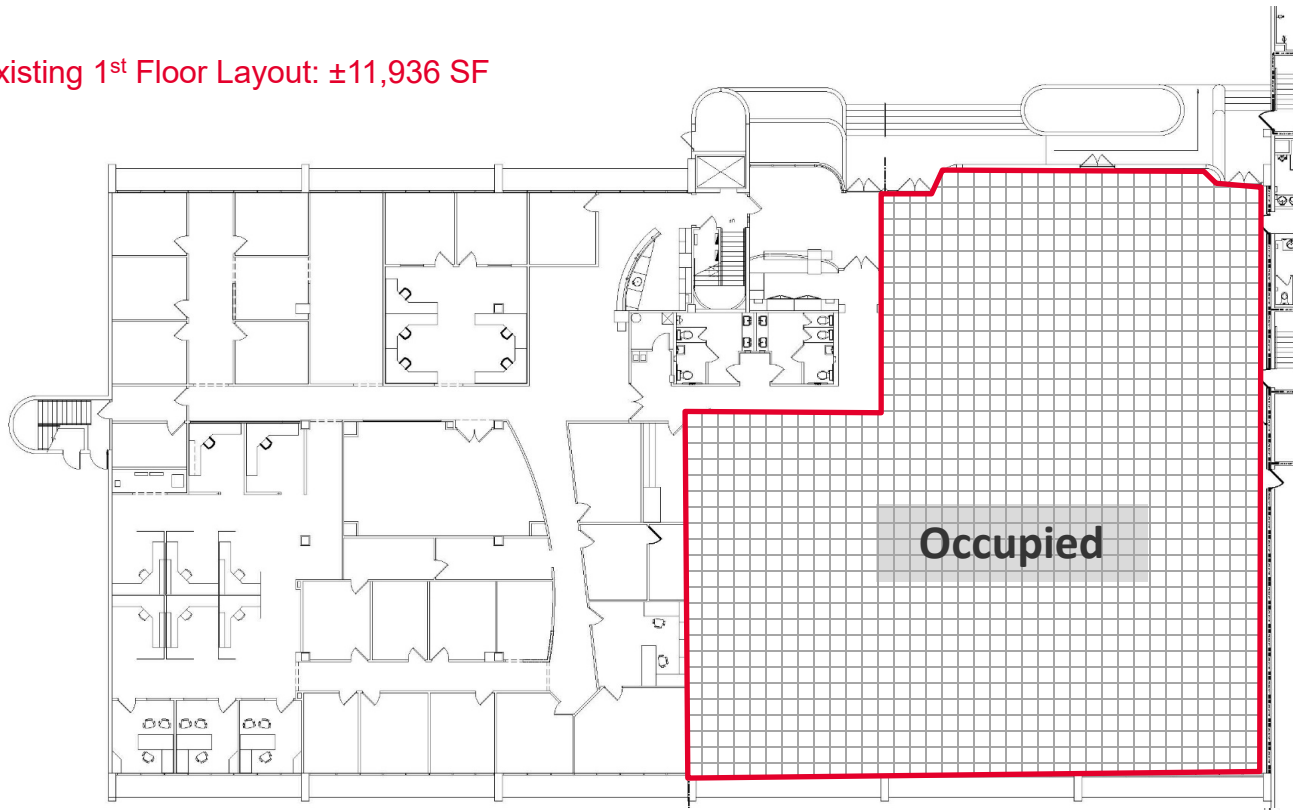


A wide-angle photograph of a modern commercial building, identified by the number '2200' on its facade. The building features a mix of white, grey, and brown brickwork. A prominent cylindrical brick tower stands on the right side. Large windows are visible across the upper floors. In the foreground, there is a large, paved parking lot with white and blue markings. Several young trees and a tall light pole are scattered throughout the scene. The sky is clear and blue.

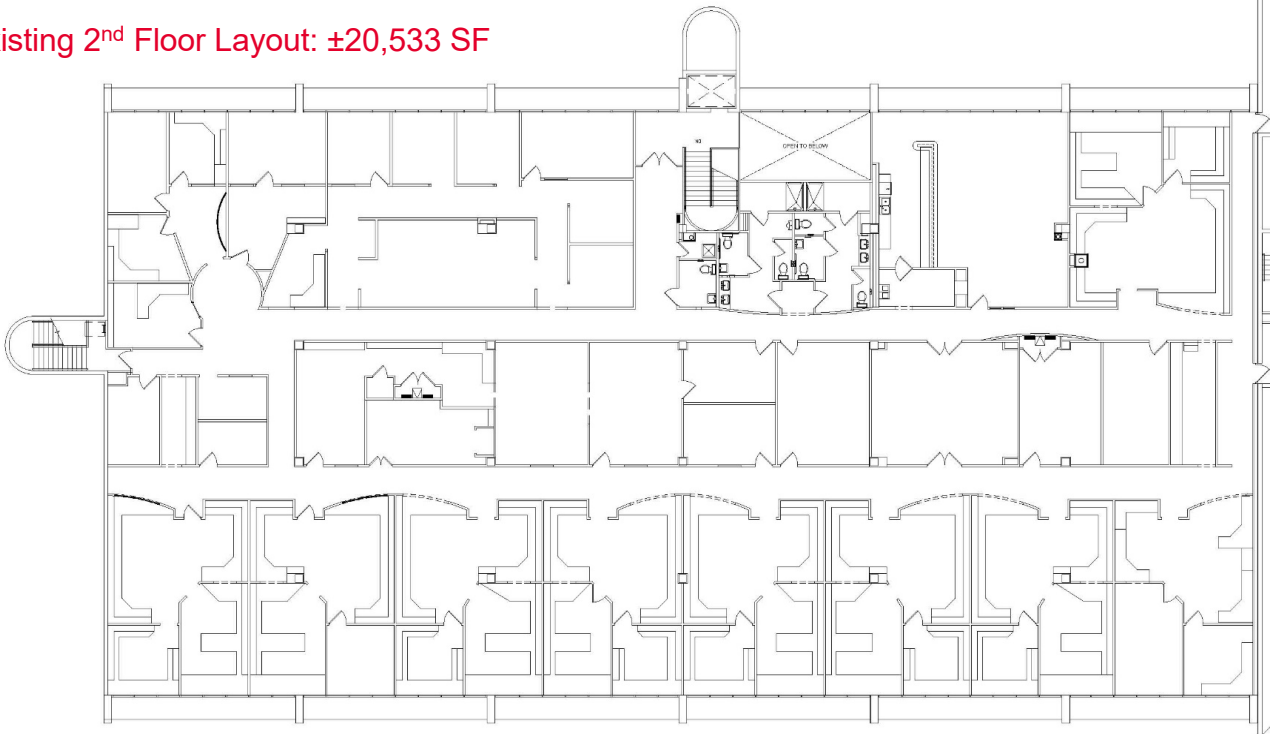
A map of the Fort Lauderdale area in Florida. The map shows Fort Lauderdale, Fort Lauderdale-Hollywood International Airport (marked with an airplane icon), and Dania Beach. Major roads like I-95, I-595, and US-1 are visible. Parks such as Broadview Park, Plantation Park, and Dr. Von D. Mizell-Eula Johnson State Park are labeled. The map also shows the Fort Lauderdale Harbor and the Port Everglades. A red location pin is placed near the airport.

**Christopher Thomson, SIOR**  
Executive Managing Director  
+1 561 301 2390  
christopher.thomson@cushwake.com

Existing 1<sup>st</sup> Floor Layout: ±11,936 SF



Existing 2<sup>nd</sup> Floor Layout: ±20,533 SF



## Contact

**Matthew G. McAllister, SIOR**

Senior Director

+1 561 901 5216

[matthew.mcallister@cushwake.com](mailto:matthew.mcallister@cushwake.com)

**Christopher Thomson, SIOR**

Executive Managing Director

+1 561 301 2390

[christopher.thomson@cushwake.com](mailto:christopher.thomson@cushwake.com)