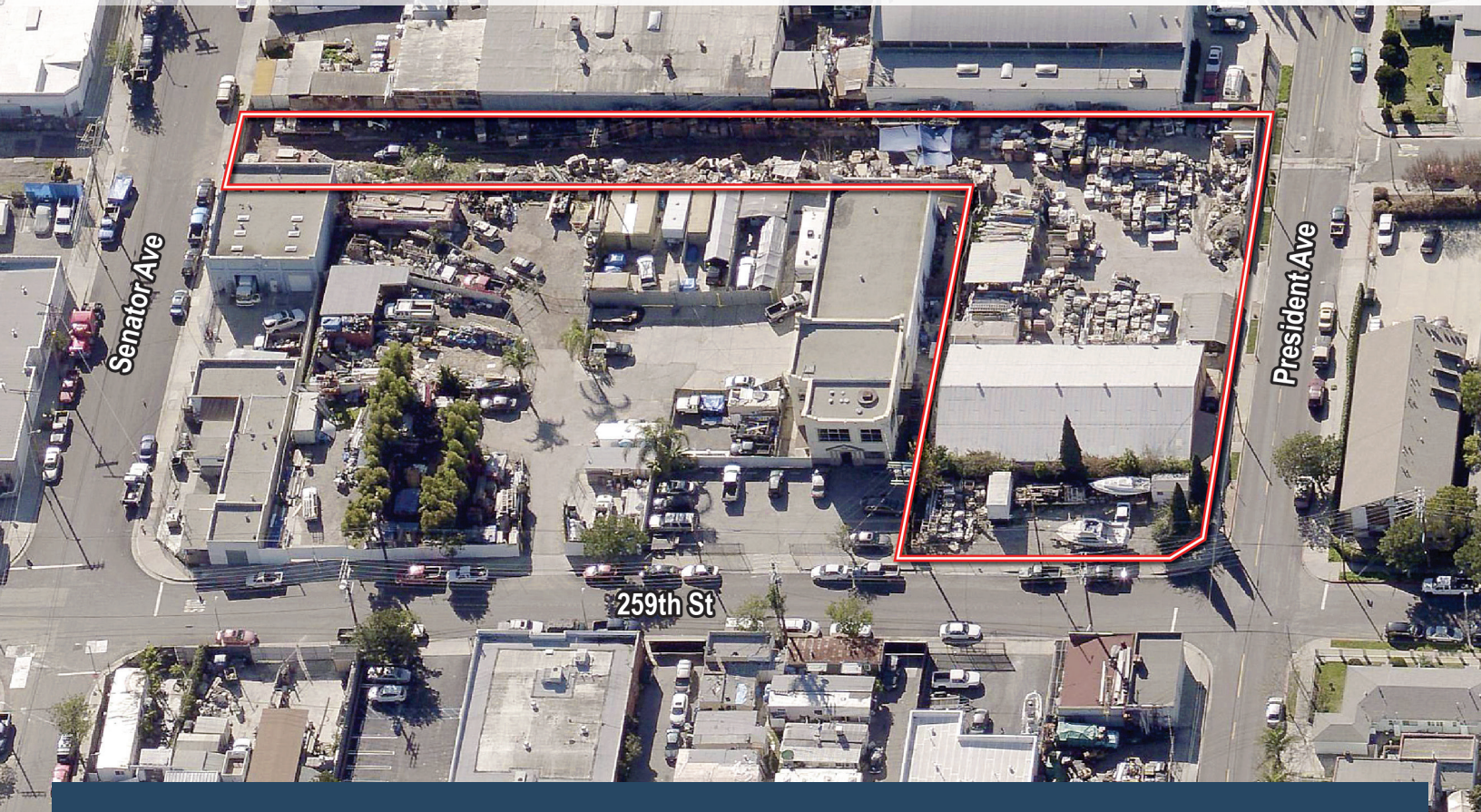


39,289 SF

Industrial Land

25904 President Ave, Harbor City, CA 90710



FOR LEASE

Property Highlights

- Excellent South Bay Location
- Easy Access to Pacific Coast Highway and the 110 Freeway
- Multiple Points of Access on two (2) Streets
- Great Property for Surface Storage or Development
- Warehouse with Large Yard Area
- Concrete Paved with Multiple Gates for Entry to Yard

Property Features

Land Area:.....	39,289 SF
Building Area:.....	6,800 SF
Zoning:.....	LAMR1
Fenced Yard:.....	Yes
Lights:.....	Yes
Paved:.....	Yes
Sewer:.....	Yes

Asking Rate: \$33,395.65 (0.85 PSF) per month, gross

Voit

REAL ESTATE SERVICES

www.voitco.com

JOHN COSTA
 Vice President
 Lic. #01940766
 424.329.7505
 jcosta@voitco.com

DAVID FULTS
 Senior Vice President
 Lic. #01242123
 424.329.7504
 dfults@voitco.com

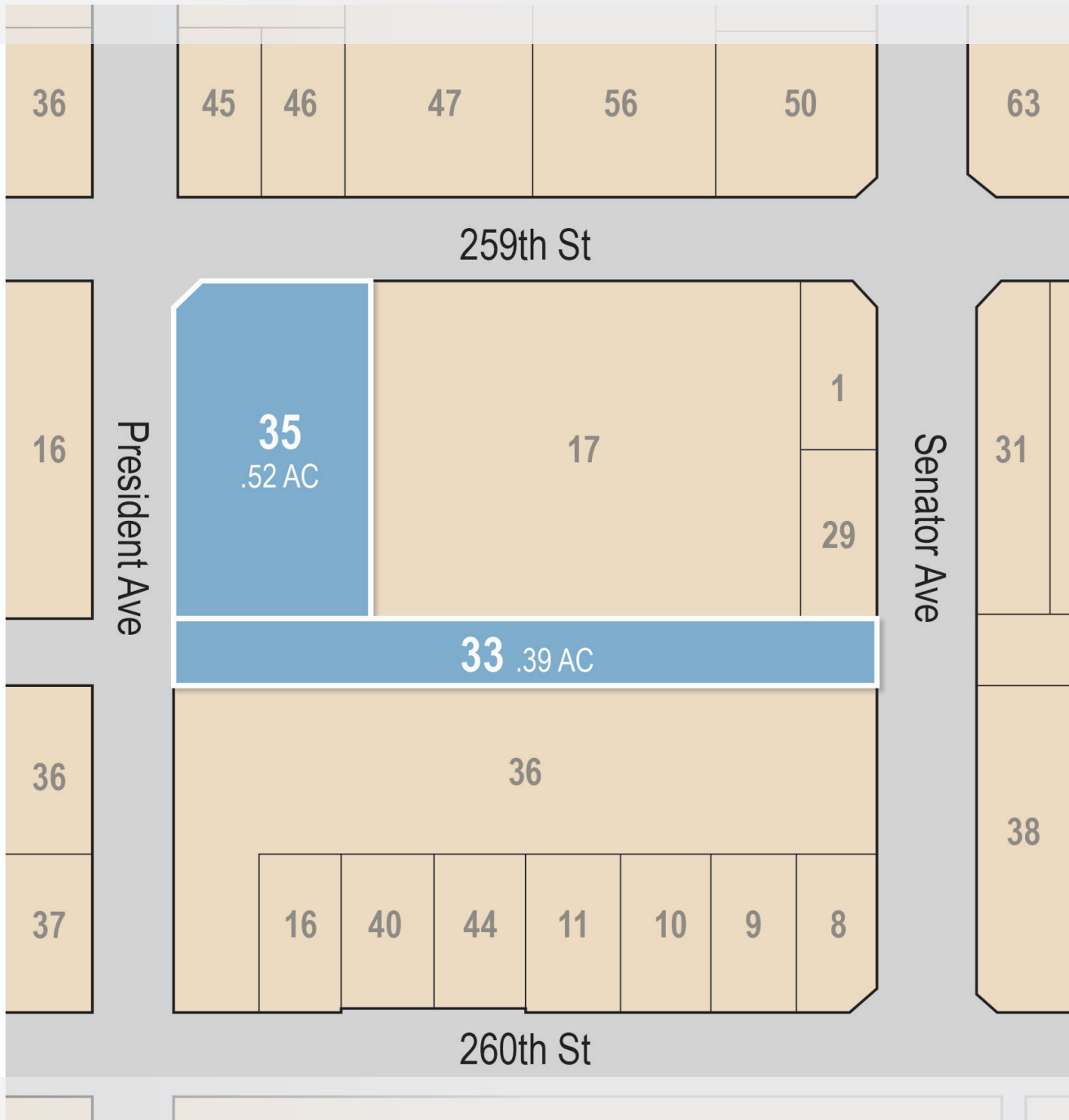
BRIAN MCLOUGHLIN
 Senior Vice President
 Lic. #01268410
 424.329.7503
 bmcloughlin@voitco.com

1025 W. 190th St., Suite 350, Los Angeles, CA 90248 | 424.329.7500 • 424.233.0736 Fax • Lic #01991785

For Lease

39,289 SF Industrial Land

25904 President Ave, Harbor City, CA 90710



REAL ESTATE SERVICES

www.voidco.com

JOHN COSTA
 Vice President
 Lic. #01940766
 424.329.7505
jcosta@voidco.com

DAVID FULTS
 Senior Vice President
 Lic. #01242123
 424.329.7504
dfults@voidco.com

BRIAN MCLOUGHLIN
 Senior Vice President
 Lic. #01268410
 424.329.7503
bmcloughlin@voidco.com

1025 W. 190th St., Suite 350, Los Angeles, CA 90248 | 424.329.7500 • 424.233.0736 Fax • Lic #01991785

Licensed as Real Estate Salespersons by the CA Bur of Real Estate. The information contained herein has been obtained from sources we deem reliable. While we have no reason to doubt its accuracy, we do not guarantee it. ©2017 Voit Real Estate Services, Inc. All Rights Reserved.