

164,202 SF Available For Sublease



Available: April 2024

4990 Beech Place

Temple Hills, Maryland 20748



**164,202
Square Feet**



**1,649 SF
Office Space**



**32'
Clear Height**



**I-1 Light Industrial
Zoning
(PG County)**



**Class A
Industrial
Warehouse**

Please contact

Daniela Patino
CBRE, Inc.
+1 571 269 1120
daniela.patino@cbre.com

Chad Tuck
KBC Advisors
+1 615 336 8190
chad.tuck@kbcadvisors.com

Andrea Roy
KBC Advisors
+1 206 853 0382
andrea.roy@kbcadvisors.com

CBRE

KBCADVISORS

Property Specifications & Site Plan

4990 Beech Place, Temple Hills, Maryland

164,202 SF
AVAILABLE

60'
SPEED BAY
DEPTH

205' x 788'
BUILDING
DIMENSIONS

ESFR
SPRINKLERS

±2
ACRES OF
ADDITIONAL PARKING

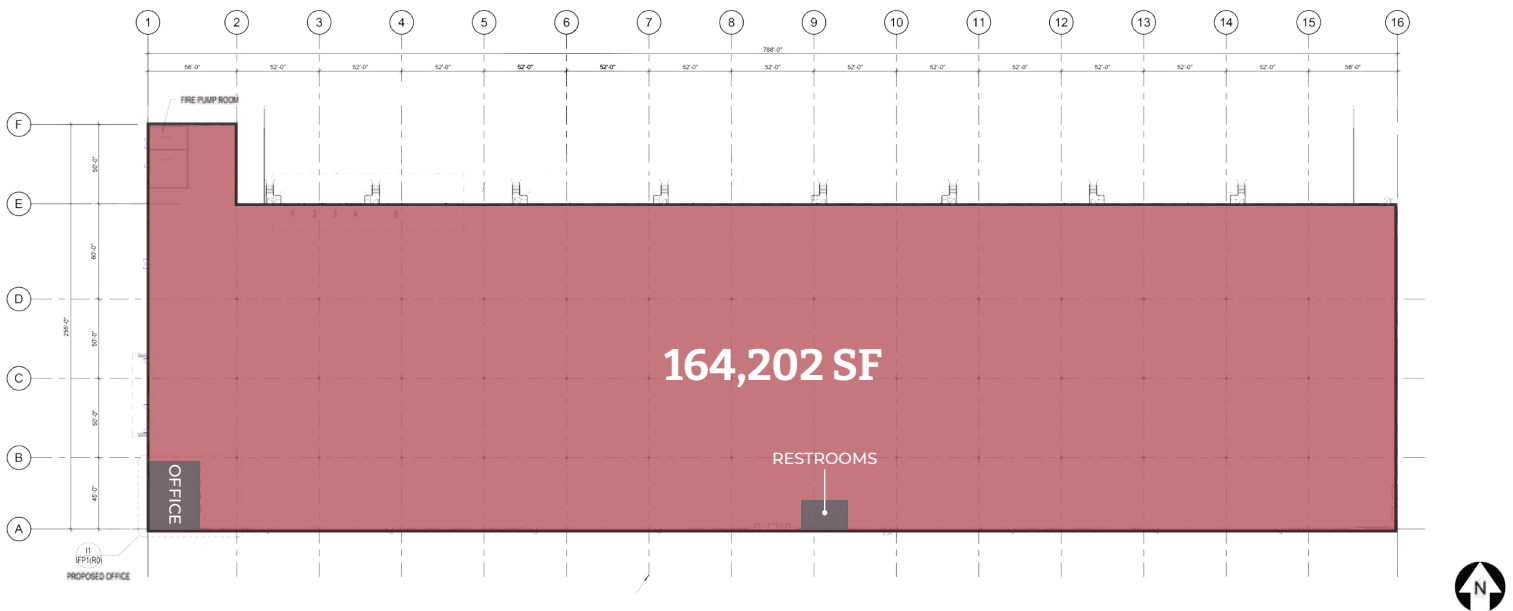
Up to 41
DOCK DOORS

130' to 185'
TRUCK COURT

163
CAR PARKS

30
TRAILER PARKS

52' x 50'
COLUMN SPACING



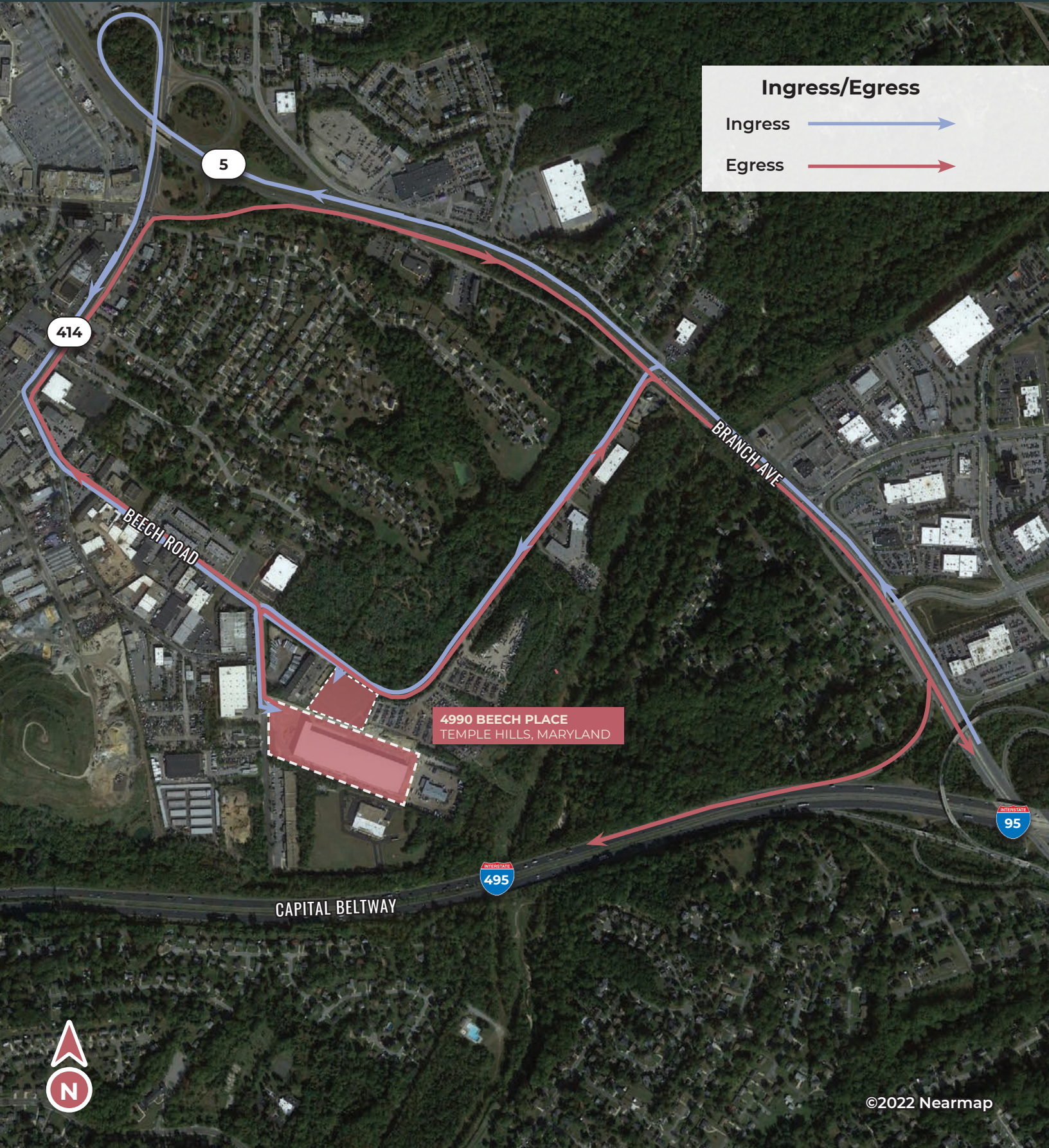
The Property

4990 Beech Place, Temple Hills, Maryland



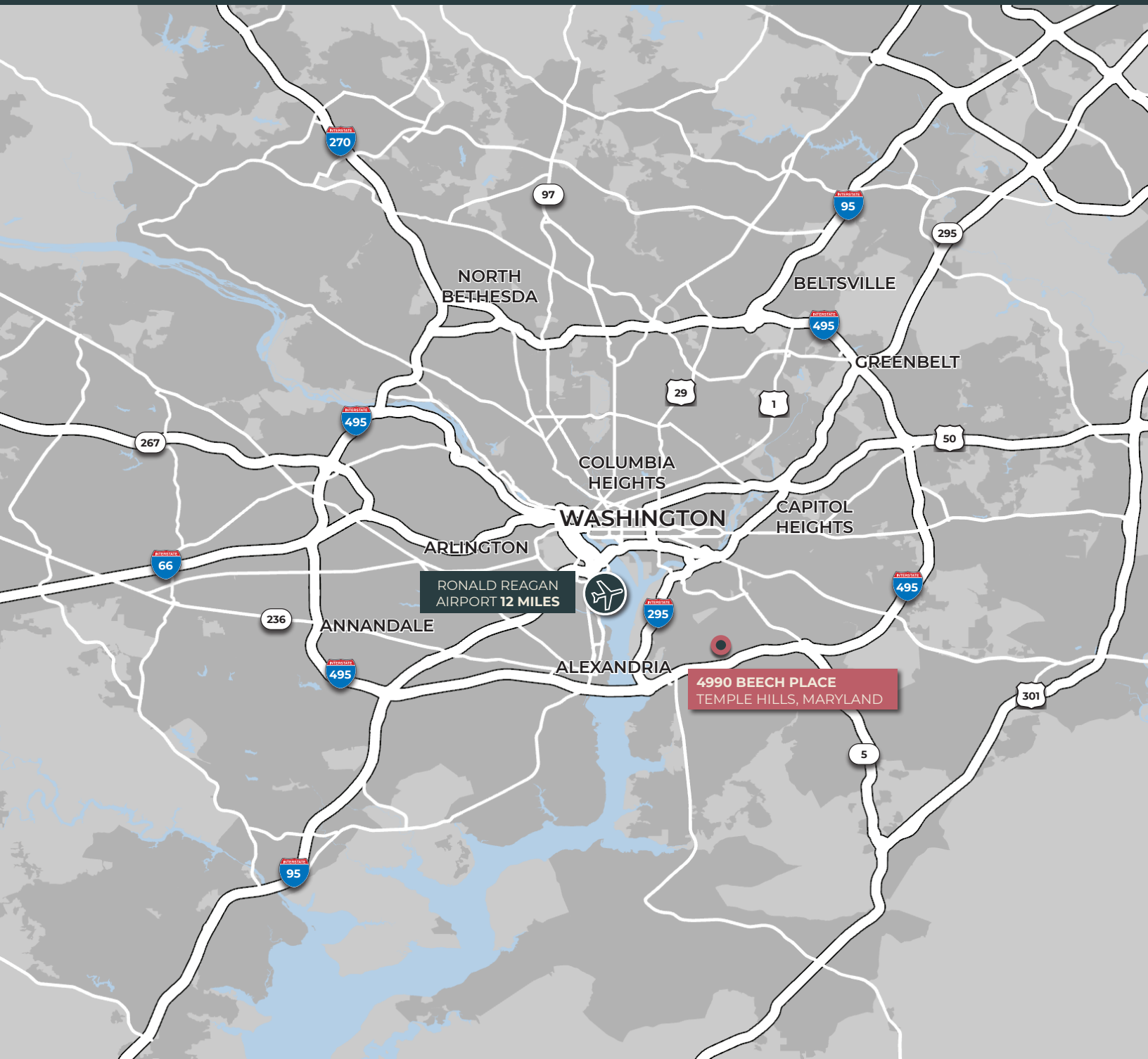
Immediate Interstate 495 & 95 Access

4990 Beech Place, Temple Hills, Maryland



Premier Regional Connectivity

4990 Beech Place, Temple Hills, Maryland



CBRE

KBCADVISORS

This information has been obtained from sources believed to be reliable but has not been verified for accuracy or completeness, and we disclaim any guarantees, warranties or representations, express or implied, as to the completeness or accuracy as to the information contained herein. You should conduct a careful, independent investigation of the property and verify all information. Any reliance on this information is solely at your own risk. All logos are service marks of their respective owners. Photos herein are the property of their respective owners. Use of these images without the express written consent of the owners is prohibited.