

**PLUG AND PLAY OPPORTUNITY | SUBLEASE**

# 354 MERRIMACK STREET

Lawrence, Massachusetts



## 3,300 SF AVAILABLE

### BUILDING FEATURES

- Flexible Term
- Located in Riverwalk Innovation District
- Immediate Access to I-495
- On-site Fitness Center

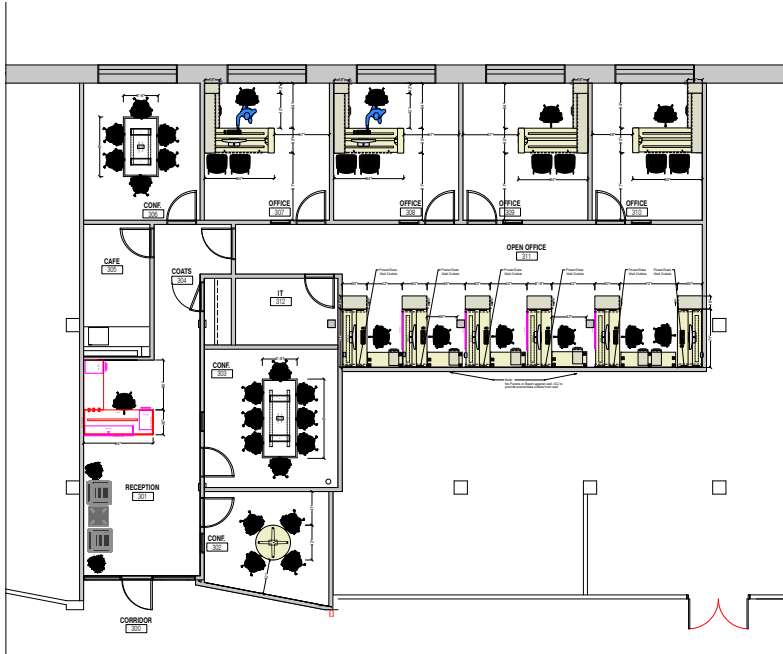


**3,300 SF AVAILABLE | SUBLEASE**

# 354 MERRIMACK STREET

Lawrence, Massachusetts

## SECOND FLOOR



## PROPERTY SPECIFICATIONS

<b>AVAILABLE SF:</b>	3,300 SF
<b>PROPERTY TYPE:</b>	Office
<b>LOCATION:</b>	Riverwalk Innovation District (Mixed Use Campus)
<b>STORIES:</b>	3
<b>AVERAGE FLOOR SIZE:</b>	51,316 SF
<b>PARKING:</b>	8.76 / 1,000 SF
<b>AVAILABILITY:</b>	Sublease
<b>SUBLEASE TERM:</b>	Negotiable Term
<b>FURNITURE</b>	Can be Included



### CONTACT US TO ARRANGE A TOUR

**NED HALLORAN**  
Executive Vice President  
617.457.3372  
nhalloran@hunnemanre.com

**LEEANNE RIZZO**  
Executive Vice President  
617.457.3371  
lrizzo@hunnemanre.com

**JIM BOUDROT**  
Executive Vice President  
617.957.1407  
jboudrot@hunnemanre.com



303 Congress Street, Boston, MA 02210 | 617.457.3400 | [www.hunnemanre.com](http://www.hunnemanre.com)