



Building features recently renovated common areas and expansive window lines

1st Floor availabilities are directly off elevator lobby for excellent accessibility

High image building in a beautifully landscaped 7 acre office park

Easy access to I-695 and I-95; adjacent to MedStar Franklin Square Medical Center and the new Surgical Pavilion

Within close proximity to Essex Community College, White Marsh Town Center and business community

AVAILABILITY

- Suite 100: 9,440 SF available
- Suite 110: 1,855 SF available
- Suite 305: 1,650 SF available
- 36,011 SF building



FOR MORE INFORMATION PLEASE CONTACT:

Gail Chrzan

443-330-4807 | gchrzan@blueobrecht.com

Matt McKnelly

443-330-4809 | mmcknelly@blueobrecht.com



[instagram.com/blueobrecht](https://www.instagram.com/blueobrecht)



[linkedin.com/company/blue&obrecht](https://www.linkedin.com/company/blue&obrecht)

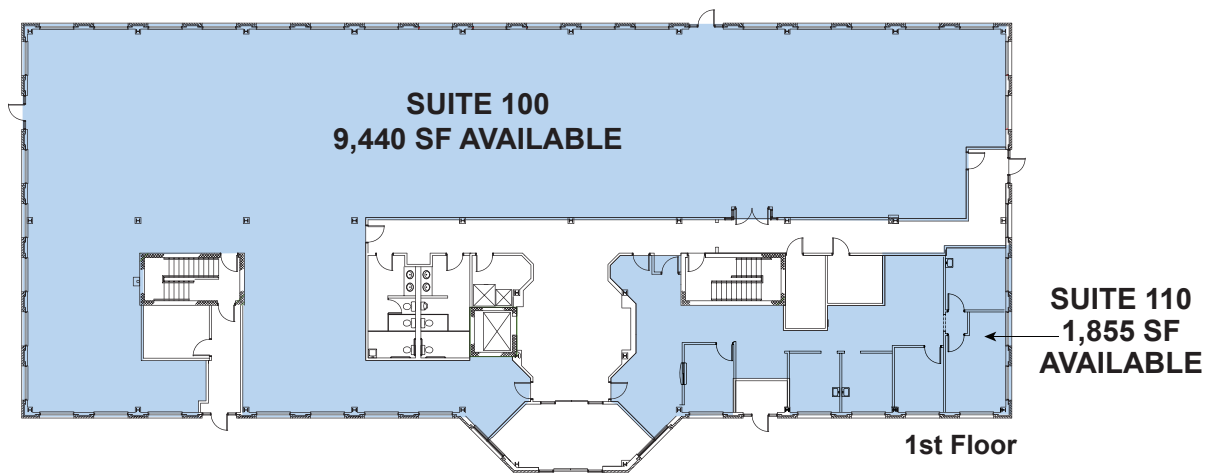
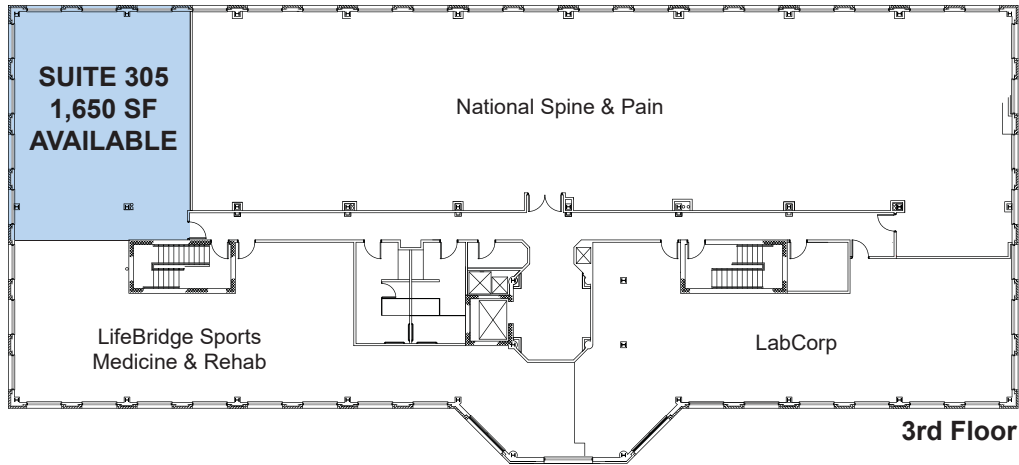


www.blueobrecht.com



410-561-5568

6820 HOSPITAL DRIVE MEDICAL OFFICE FOR LEASE



Building Information

Zoned O-1

Built in 1998

2.15-acre lot

Parking at 4.15 / 1,000

Wet sprinkler system

Comcast Xfinity and Verizon
FiOs

Building hours: 6:00 a.m. - 8:30
p.m. Monday through Friday and
6:00 a.m. - 12:00 p.m. on Satur-
day

Building tenants include National
Spine & Pain Centers, Lab
Corp., Chesapeake Urology
Assoc. & Summit Ambulatory
Surgical Center, NovaCare
Rehabilitation, and GSA

