



"From Concept to Closing, with Integrity"

Versatile Property and Land For Sale

46,856 Square Foot Building on 6.7 Acres, Plus
Separately Deeded 1.582-Acre Parcel

L-1 Light Industrial Zoning

12265 Townsend Road &
12240 Thornton Road
Philadelphia, PA 19154

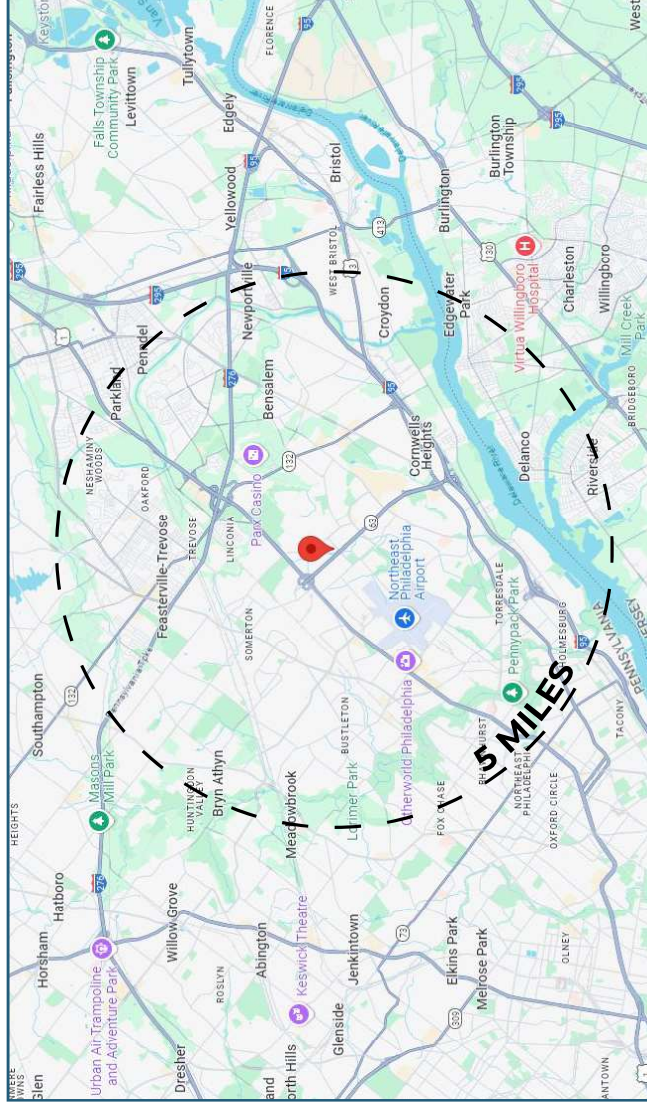
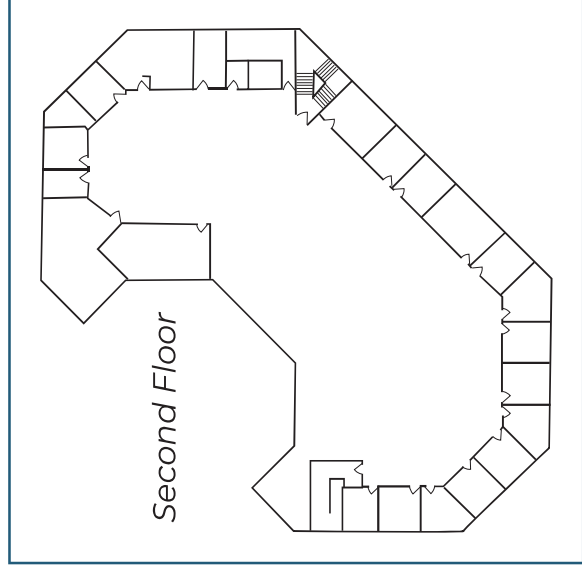
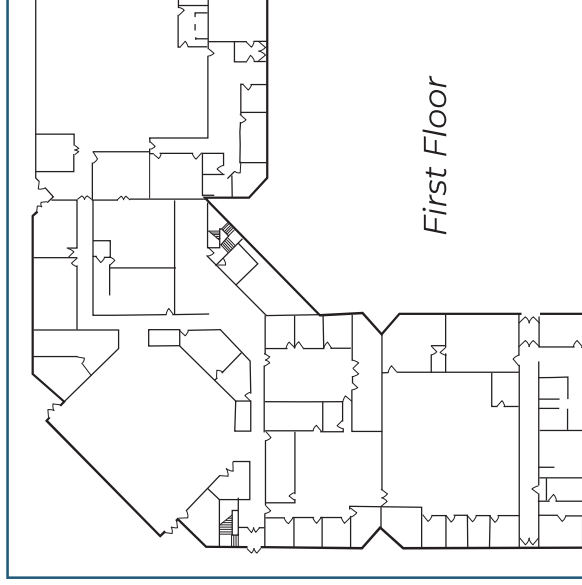
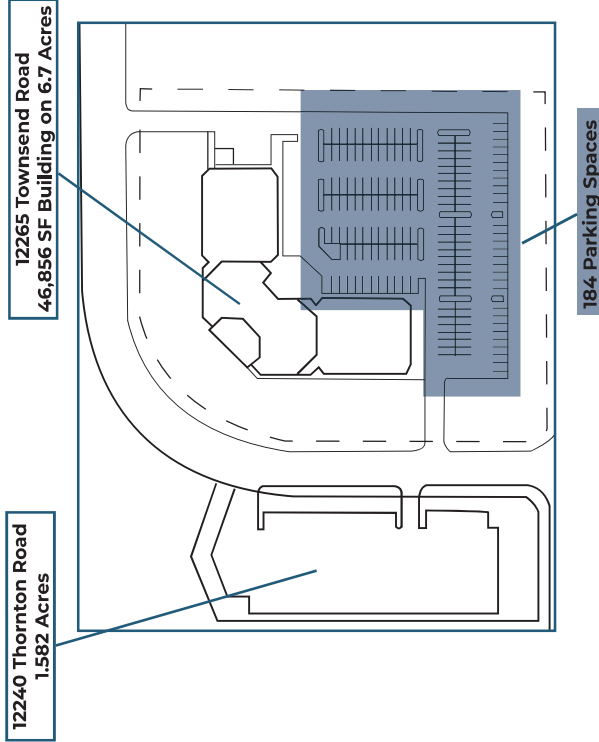


Walsh Commercial Real Estate, LLC
3 Village Road, Suite 200 | Horsham, PA 19044
215-836-1340 | walshcre.com

CONTACT:
Brendan Walsh
215-603-1234
bwalsh@walshcre.com

* Information contained herein was obtained from the property owner or sources deemed reliable. We have no reason to doubt its accuracy but we do not guarantee it.

12265 Townsend Road · Versatile Property For Sale



Walsh Commercial Real Estate, LLC
 3 Village Road, Suite 200 | Horsham, PA 19044
 215-836-1340 | walshcre.com

** Information contained herein was obtained from the property owner or sources deemed reliable. We have no reason to doubt its accuracy but we do not guarantee it.*

CONTACT:
Brendan Walsh
 215-603-1234
 bwalsh@walshcre.com