

RETAIL OPPORTUNITY

625 TRUNK ROAD

UNIT 5 | SAULT STE.MARIE, ON | FOR LEASE



CBRE

PROPERTY DETAILS

625 TRUNK ROAD, SAULT STE. MARIE
UNIT #5



TOTAL AREA: 1,357 SQ. FT.



ZONING: C5 - COMMERCIAL



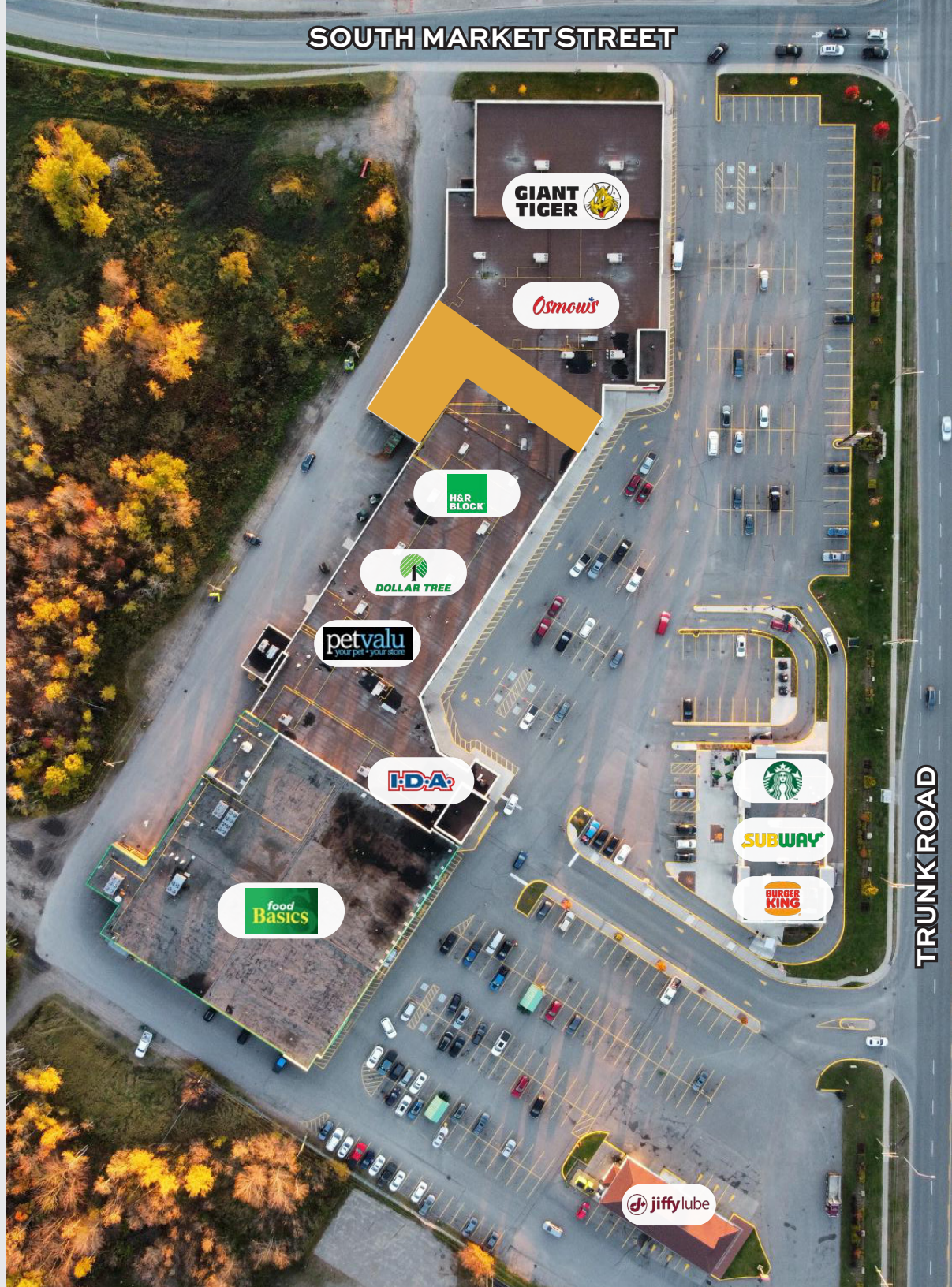
RENT: \$25.00 PER SQ. FT. NET



TMI: \$10.00 PER SQ. FT. (2026)



OCCUPANCY: IMMEDIATE



THE LOCATION

SAULT STE. MARIE



AADT: 15,566



AADT: 12,510



TRUNK RD

SOUTH MARKET ST

AADT: 24,118

TRUNK RD

AADT: 14,452

BOUNDARY RD

THE SITE

Well-positioned retail opportunity within a prime retail centre anchored by a strong mix of established tenants, including Food Basics, Giant Tiger, Dollar Tree, Burger King, Starbucks, Subway, and others, generating consistent daily traffic. The space is ideal for a quick-service restaurant or a variety of retail uses

AADT: ANNUAL AVERAGE DAILY TRAFFIC (2025)

LOCAL AMENITIES

SAULT STE. MARIE



LCBO
Mark's

THE HOME DEPOT

Walmart

Leons

Michaels
PETSMART

WINNERS
HOMESENSE
PRINCESS AUTO

SAULT COLLEGE

THE SITE

STATION PLAZA

DOLLARAMA
Tim Hortons
Scotiabank
H&M
St. Louis

CHURCHILL PLAZA

metro
SUBWAY
A&W
DOLLARAMA
Rexall
CIBC
LCBO
RBC
BEER STORE

CAMBRIAN MALL

SHOPPERS DRUG MART
DOLLAR TREE
TD
BMO

WELLINGTON SQUARE

BURGER KING
GIANT TIGER
Osmo's
I-D-A
STARBUCKS
food BASICS
DOLLAR TREE
SUBWAY
jiffy lube
Pizza Hut
petvalu
H&R BLOCK

ALGOMA UNIVERSITY

DEMOGRAPHIC SNAPSHOT

79,814

POPULATION

83,945

DAYTIME POPULATION

44

MEDIAN AGE

\$117,385

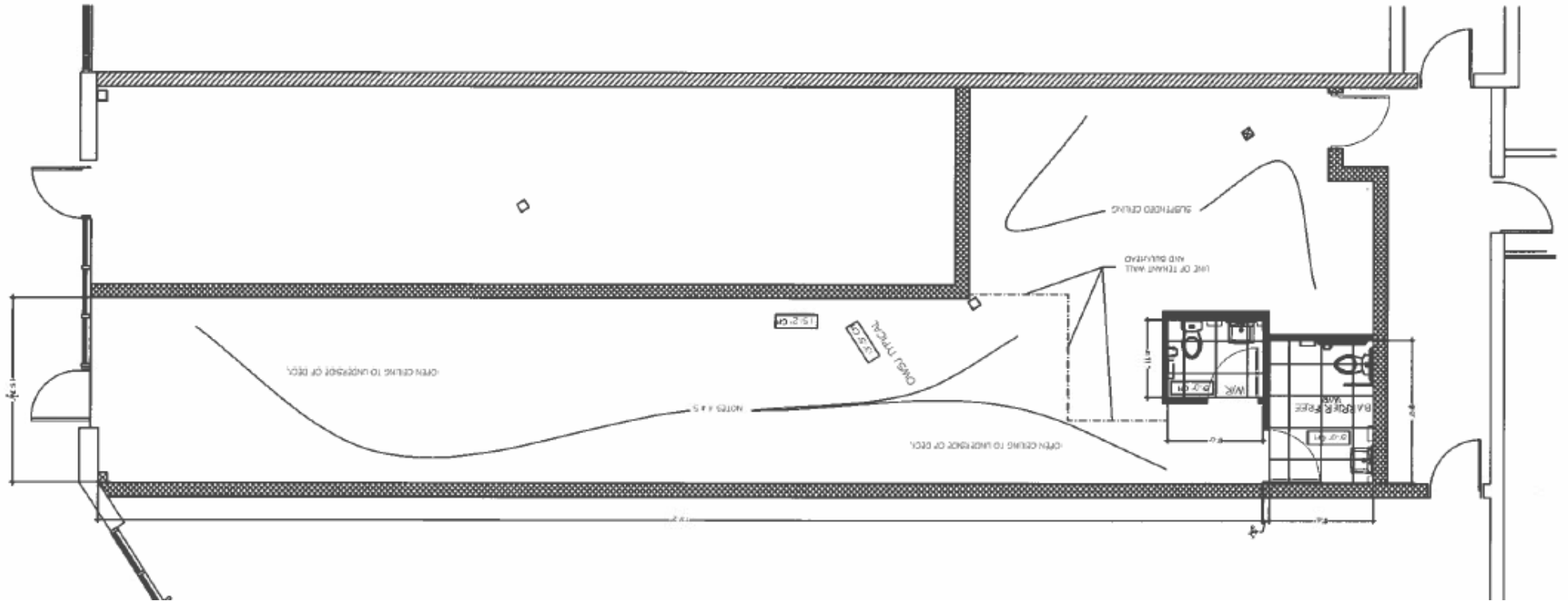
AVERAGE HOUSEHOLD
INCOME

34,549

OF HOUSEHOLDS

FLOOR PLAN

■ UNIT 5



INTERIORS PHOTOS



FOR MORE INFORMATION, PLEASE CONTACT



Susanne Reid*
Senior Vice President
416 495 6224
susanne.reid@cbre.com



Chelsea Thom*
Vice President
416 495 6272
chelsea.thom@cbre.com



Matthew Jackson**
Vice President
416 495 6294
matthew.jackson@cbre.com

CBRE

*Sales Representative **Broker

CBRE Limited, Real Estate Brokerage | All outlines are approximate. | 2005 Sheppard Ave. E. #800, Toronto, ON M2J 5B4 | www.cbre.ca

This disclaimer shall apply to CBRE Limited, Real Estate Brokerage, and to all other divisions of the Corporation; to include all employees and independent contractors ("CBRE"). The information set out herein, including, without limitation, any projections, images, opinions, assumptions and estimates obtained from third parties (the "Information") has not been verified by CBRE, and CBRE does not represent, warrant or guarantee the accuracy, correctness and completeness of the Information. CBRE does not accept or assume any responsibility or liability, direct or consequential, for the information or the recipient's reliance upon the Information. The recipient of the Information should take such steps as the recipient may deem necessary to verify the Information prior to placing any reliance upon the Information. The Information may change and any property described in the Information may be withdrawn from the market at any time without notice or obligation to the recipient from CBRE. CBRE and the CBRE logo are the service marks of CBRE Limited and/or its affiliated or related companies in other countries. All other marks displayed on this document are the property of their respective owners. All Rights Reserved. Mapping Sources: Canadian Mapping Services canadamapping@cbre.com; DMTI Spatial, EnviroNics Analytics, Microsoft Bing, Google Earth