



±1.6 AC PULASKI, TN
1451 W. College St., Pulaski, TN 38478

Property Summary



DAILY TRAFFIC CONDITIONS

TRAFFIC COUNT	DAILY TRAFFIC
COUNT	16,970
STREET	W. College St.

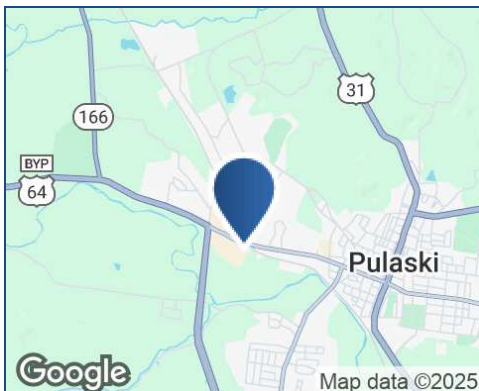
* Figures shown represent estimates

DEMOGRAPHICS - 2025

DEMOGRAPHICS	3 MILE	5 MILE	7 MILE
Estimated Population	10,040	12,394	16,251
Average HH Income	\$74,410	\$78,966	\$84,176
Estimated Households	4,139	5,092	6,673

PROPERTY HIGHLIGHTS

- Ideal for restaurants, fast food, and retail development
- Ground Lease
- Area retailers and restaurants include The Home Depot, Walmart, Dollar Tree, Cato, Hibbett Sports, Dollar General, Badcock Home Furniture & More, Shoe Sensation, Taco Bell, Auto Zone, Hampton by Hilton, Tidal Wave Auto Spa, Pizza Hut, Kentucky Fried Chicken, and Tractor Supply Co.



KEITH VALENTINE

678.718.1882

KValentine@retail-pa.com

SHELDON GRIFFIN

615.627.3966

sgriffin@bsmproperties.com

Retail Property Advisors // 678.718.1880 // 2100 RiverEdge Pkwy. // Suite 1050, Atlanta, GA 30328 // Retail-PA.com

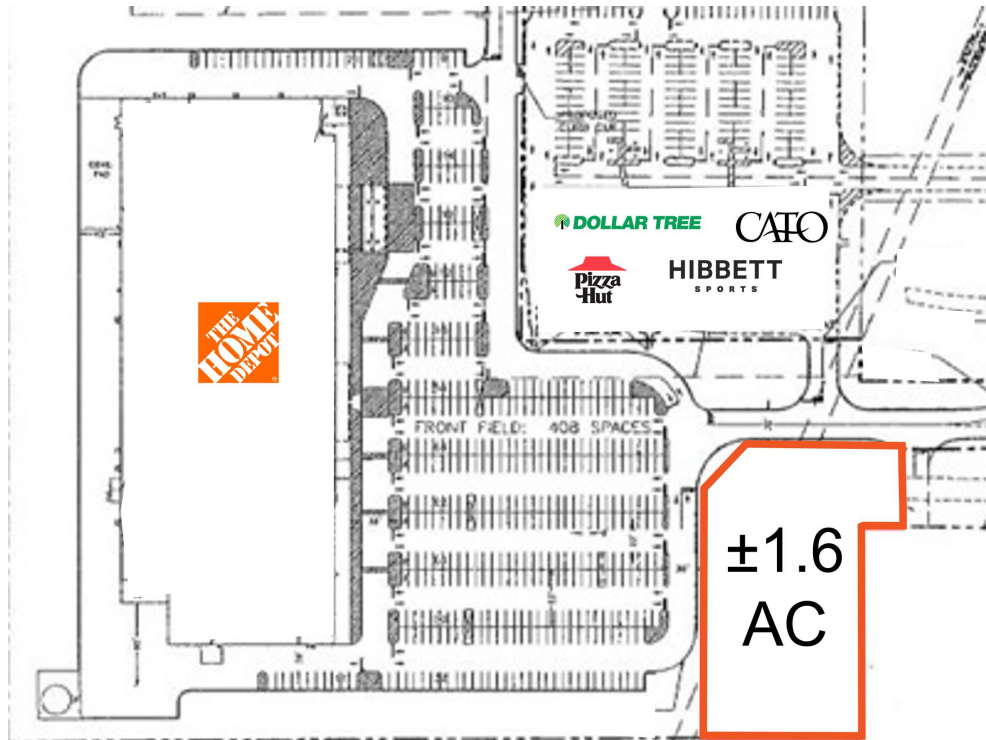
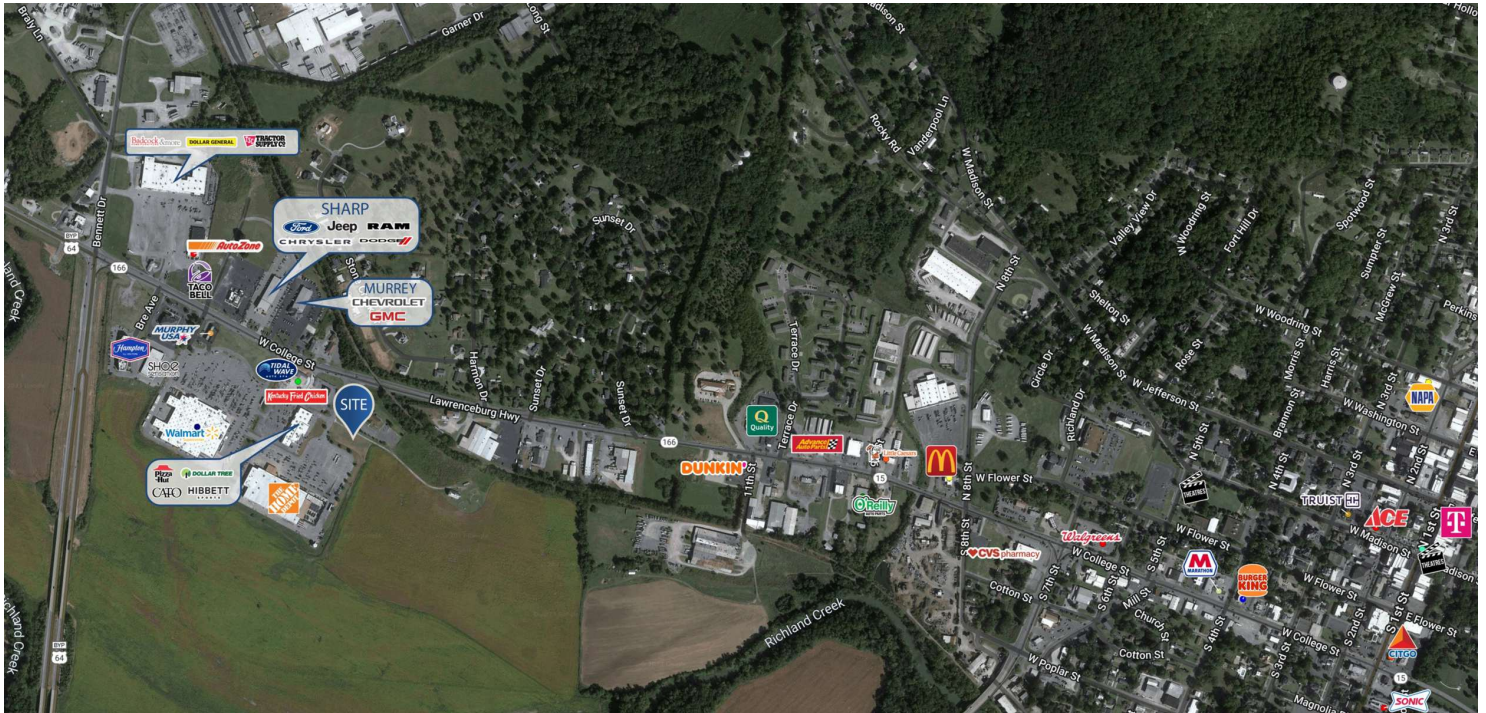
ATLANTA // TAMPA // PASADENA, CA // AUBURN // SARASOTA // BALTIMORE

No warranty or representation, expressed or implied, is made as to the accuracy of the information contained herein, and same is submitted subject to errors, omissions, change of price, rental or other conditions, withdrawal without notice, any special list conditions imposed by our Principals.



±1.6 AC PULASKI, TN
1451 W. College St., Pulaski, TN 38478

Location Maps



KEITH VALENTINE

678.718.1882

KValentine@retail-pa.com

SHELDON GRIFFIN

615.627.3966

sgriffin@bsmproperties.com

Retail Property Advisors // 678.718.1880 // 2100 RiverEdge Pkwy. // Suite 1050, Atlanta, GA 30328 // Retail-PA.com

ATLANTA // TAMPA // PASADENA, CA // AUBURN // SARASOTA // BALTIMORE

No warranty or representation, expressed or implied, is made as to the accuracy of the information contained herein, and same is submitted subject to errors, omissions, change of price, rental or other conditions, withdrawal without notice, any special list conditions imposed by our Principals.