

For Lease

303 Kalihi Street
Honolulu, HI 96819

PROPERTY SUMMARY

This prime commercial property offers excellent street frontage visibility along Nimitz Highway, making it a standout location for your business.

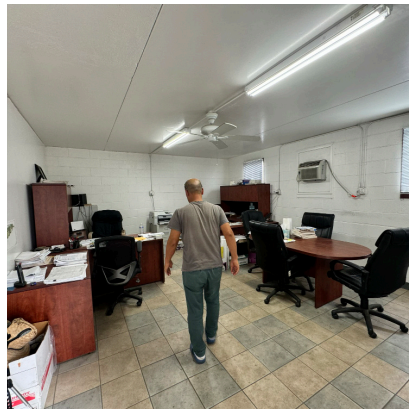
This property is well-equipped for cold storage and processing, providing an opportunity for similar uses or other industrial purposes. The space also includes large fenced and secured yard space, ideal for container staging and logistics needs.



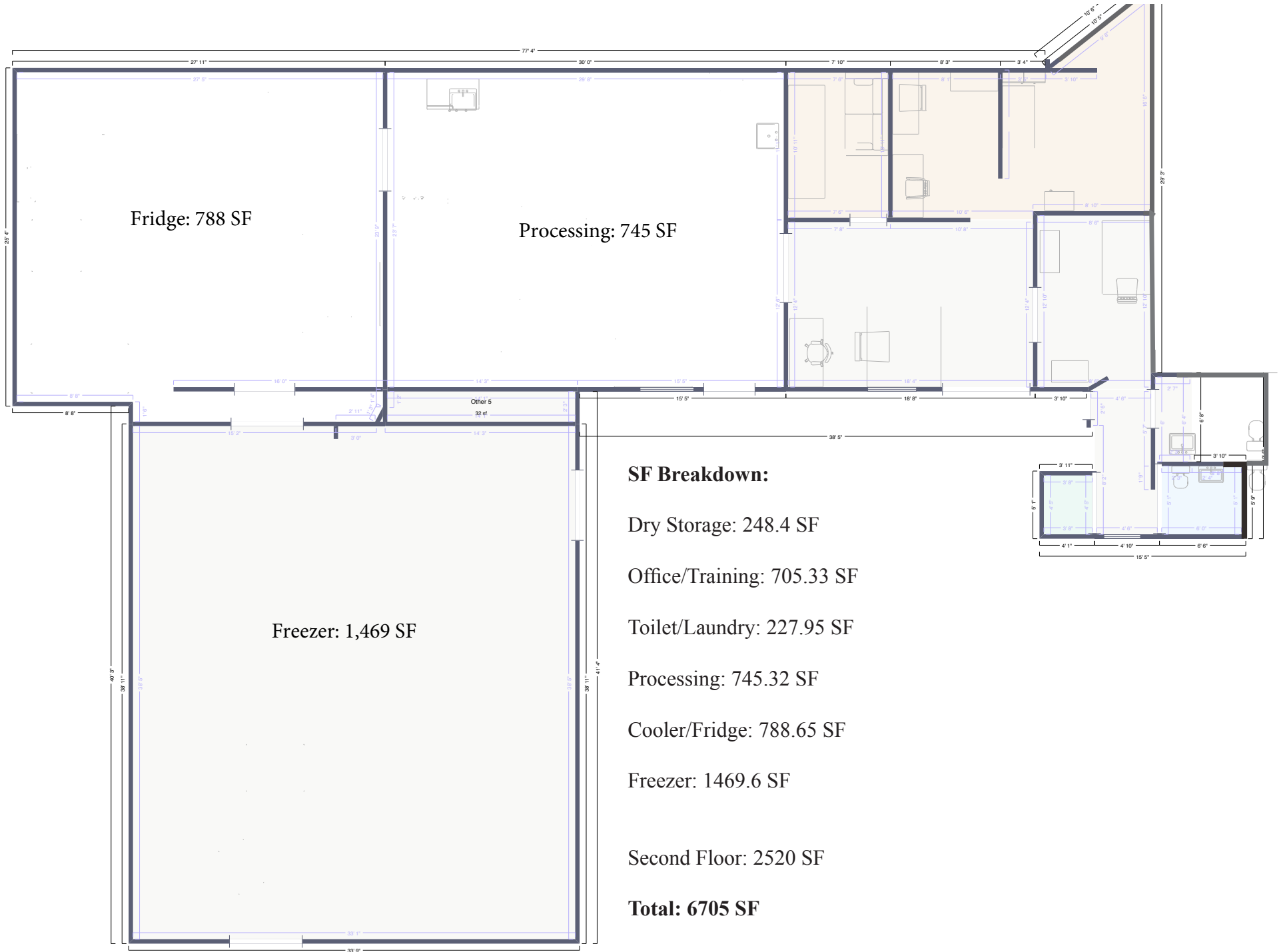


PROPERTY INFO

Address: 303 Kalihi Street
Rent: Call for information
Lot Size: 11,334 SF
Building SF: 6,705 SF
Zoning: IMX-1
Available: January 1st, 2025



Floor Plan



Location

Situated in one of Honolulu's most strategic industrial hubs, 303 Kalihi Street offers business-ees a highly convenient location with exceptional proximity to some of the city's most well-known companies and distribution centers. Positioned just off Nimitz Highway, this property ensures easy access to major transportation routes, making it ideal for logistics, distribution, and day-to-day operations.

With the property located near key business districts and renowned facilities such as the Honolulu Harbor, Young Brothers, Matson, and other prom-inent local businesses, tenants will benefit from the synergy and visibility of operating in such a bustling, high-traffic area. This prime location is not only convenient for customers and suppliers but also enhances a company's brand presence and operational efficiency by being in the heart of Honolulu's thriving commercial landscape.



Keane Omaye-Backman • Lic. (RS) 76415
keane@pacificpropertygrouphawaii.com
(808) 292-6861

Wyatt Santilena • Lic. (RS) 87287
wyatt@pacificpropertygrouphawaii.com
(808) 421-8556

Miles Kamimura (B) CPM, CSM, RPA
miles@pacificpropertygrouphawaii.com
(808) 592-0200 ext 200

This document has been prepared by Pacific Property Group, Inc. for advertising and general information only. Pacific Property Group makes no guarantees, representations or warranties of any kind, expressed or implied, regarding the information including, but not limited to, warranties of content, accuracy and reliability. Any interested party should undertake their own analyses as to the accuracy of the information.