



# FOR SUBLEASE

**±78,400 SF AVAILABLE**

**2300 Grand Ave Pkwy, Austin, TX 78728**



## PROPERTY FEATURES

- ±78,400 SF available (divisible)
- Located in the North Austin submarket within Vista Park
- Convenient access to IH-35, Mopac and SH-45
- Master lease expires on 12/31/2027
- Warehouse racking available
- ±4,000 SF office space
- ESFR automatic fire sprinkler system
- 24' clear height
- Sixteen (16) dock high doors
- Two (2) drive-in doors

FOR MORE INFORMATION OR TO SCHEDULE A TOUR,  
PLEASE CONTACT:

**ANDY SWANSON** • mobile: (512) 777 9916  
• email: [swanson@centric-re.com](mailto:swanson@centric-re.com)

**RUSSELL TODD** • mobile: (512) 917 9753  
• email: [todd@centric-re.com](mailto:todd@centric-re.com)



**CENTRIC**  
COMMERCIAL

The information contained herein was obtained from sources deemed reliable. Centric Commercial, however, makes no guarantees, warranties, or representations as to the accuracy or completeness thereof. This property information flyer is submitted subject to error, omissions, change of price or conditions, prior to sale or lease, or withdrawal without notice.

[www.centric-re.com](http://www.centric-re.com)

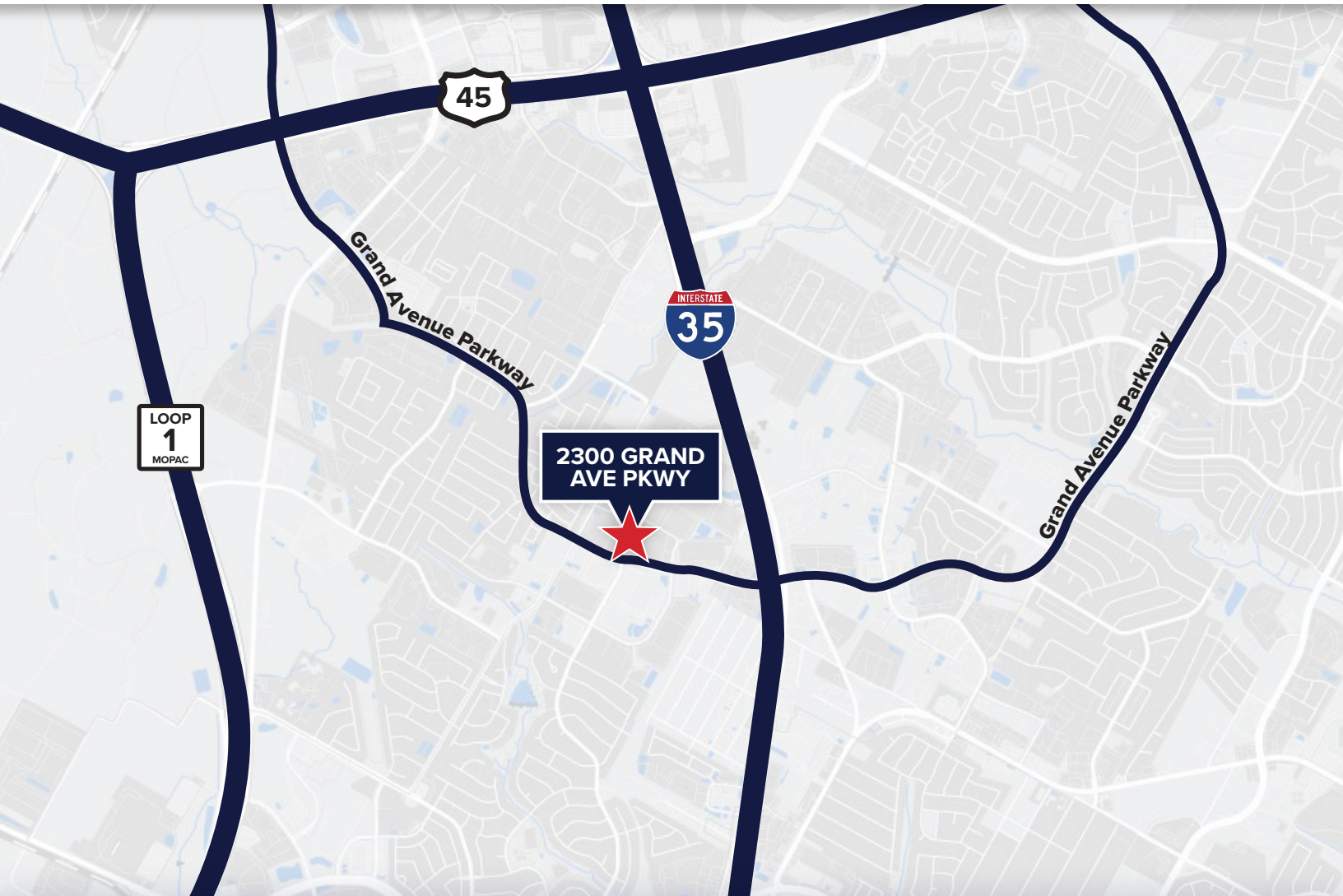


# FOR SUBLEASE

±78,400 SF AVAILABLE

2300 Grand Ave Pkwy, Austin, TX 78728

## AREA MAP



FOR MORE INFORMATION OR TO SCHEDULE A TOUR,  
PLEASE CONTACT:

**ANDY SWANSON** • mobile: (512) 777 9916  
• email: [swanson@centric-re.com](mailto:swanson@centric-re.com)

**RUSSELL TODD** • mobile: (512) 917 9753  
• email: [todd@centric-re.com](mailto:todd@centric-re.com)



**CENTRIC**  
COMMERCIAL

The information contained herein was obtained from sources deemed reliable. Centric Commercial, however, makes no guarantees, warranties, or representations as to the accuracy or completeness thereof. This property information flyer is submitted subject to error, omissions, change of price or conditions, prior to sale or lease, or withdrawal without notice.

[www.centric-re.com](http://www.centric-re.com)



# FOR SUBLEASE

±78,400 SF AVAILABLE

2300 Grand Ave Pkwy, Austin, TX 78728

## SITE PLAN



The information contained herein was obtained from sources deemed reliable. Centric Commercial, however, makes no guarantees, warranties, or representations as to the accuracy or completeness thereof. This property information flyer is submitted subject to error, omissions, change of price or conditions, prior to sale or lease, or withdrawal without notice.



# FOR SUBLEASE

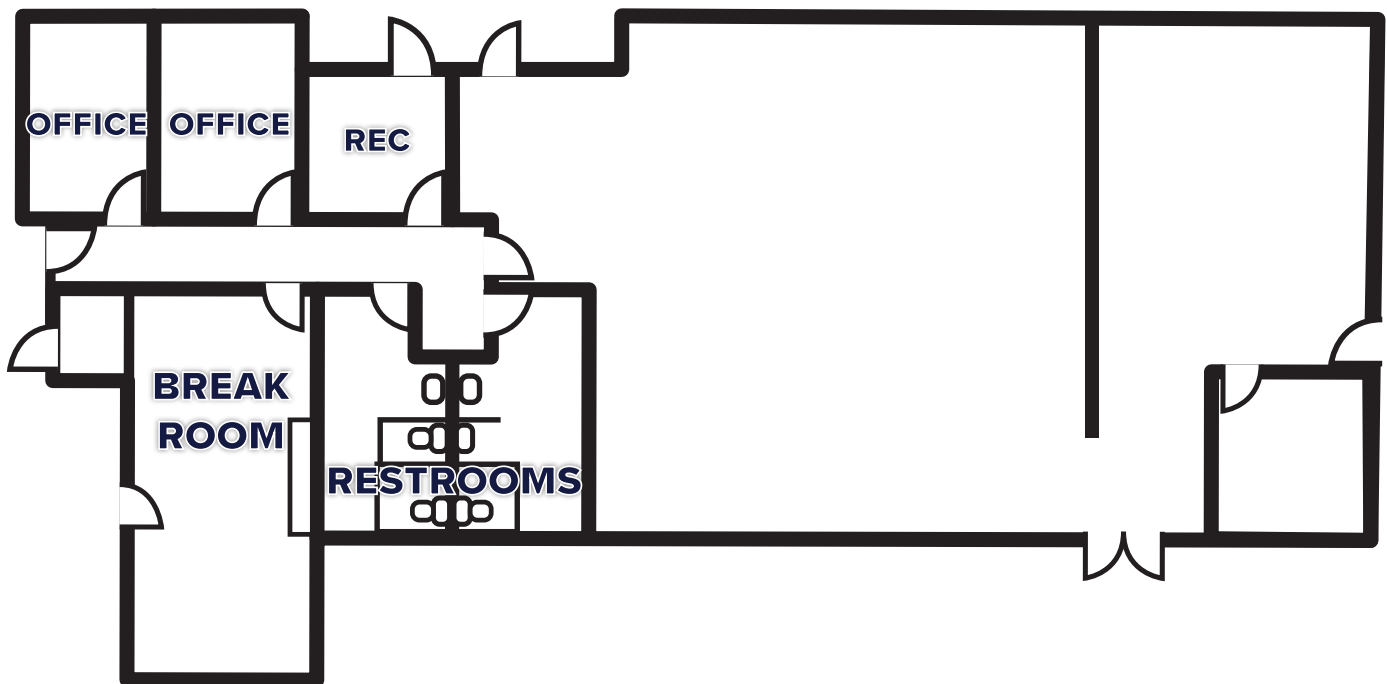
**±78,400 SF AVAILABLE**

2300 Grand Ave Pkwy, Austin, TX 78728

## OFFICE PLAN

**SUITES 103/104**

**±4,000 SF**



The information contained herein was obtained from sources deemed reliable. Centric Commercial, however, makes no guarantees, warranties, or representations as to the accuracy or completeness thereof. This property information flyer is submitted subject to error, omissions, change of price or conditions, prior to sale or lease, or withdrawal without notice.

[www.centric-re.com](http://www.centric-re.com)



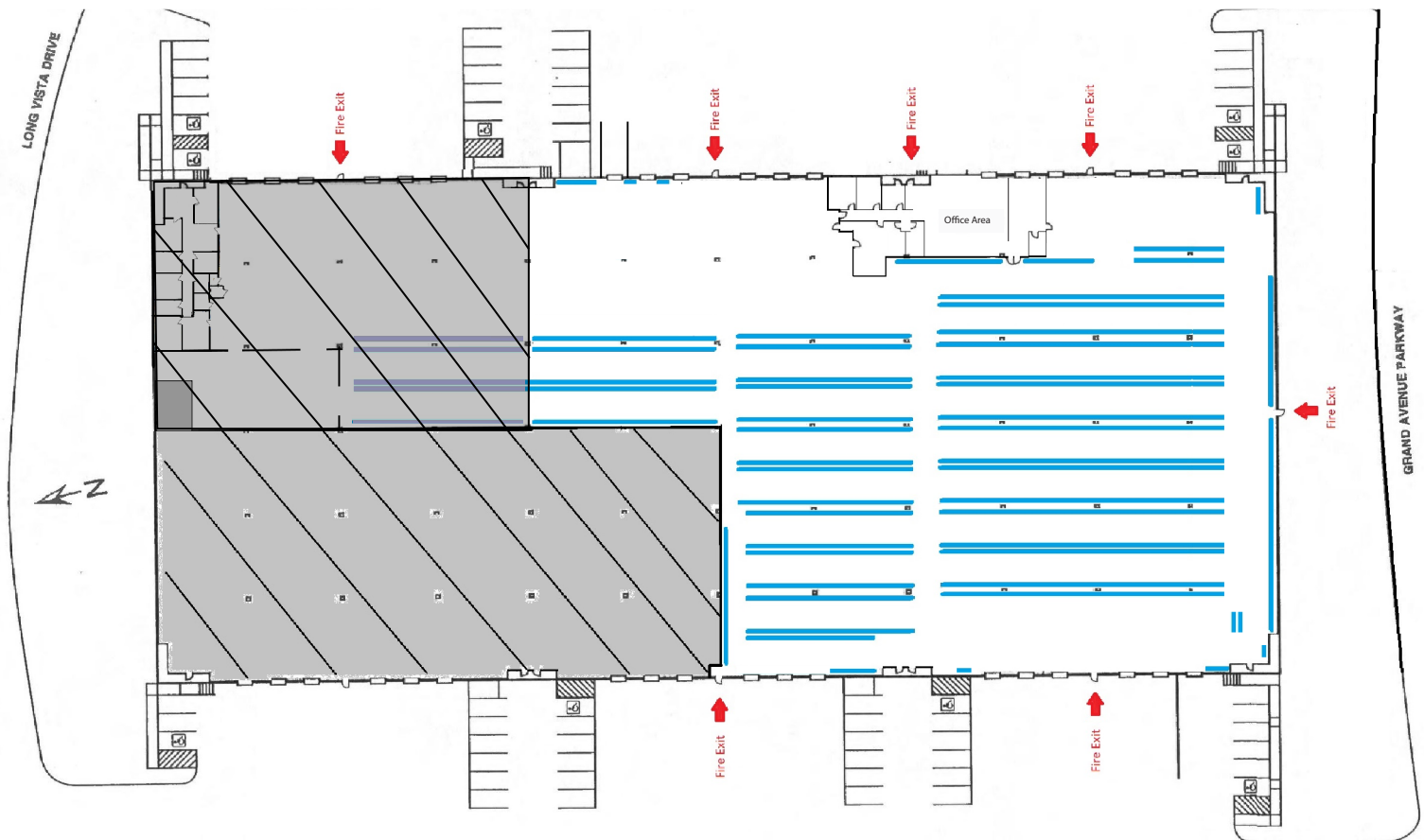


# FOR SUBLEASE

±78,400 SF AVAILABLE

2300 Grand Ave Pkwy, Austin, TX 78728

## WAREHOUSE RACKING LAYOUT



The information contained herein was obtained from sources deemed reliable. Centric Commercial, however, makes no guarantees, warranties, or representations as to the accuracy or completeness thereof. This property information flyer is submitted subject to error, omissions, change of price or conditions, prior to sale or lease, or withdrawal without notice.



## Information About Brokerage Services

*Texas law requires all real estate license holders to give the following information about brokerage services to prospective buyers, tenants, sellers and landlords.*

11-2-2015



### TYPES OF REAL ESTATE LICENSE HOLDERS:

- **A BROKER** is responsible for all brokerage activities, including acts performed by sales agents sponsored by the broker.
- **A SALES AGENT** must be sponsored by a broker and works with clients on behalf of the broker.

### A BROKER'S MINIMUM DUTIES REQUIRED BY LAW (A client is the person or party that the broker represents):

- Put the interests of the client above all others, including the broker's own interests;
- Inform the client of any material information about the property or transaction received by the broker;
- Answer the client's questions and present any offer to or counter-offer from the client; and
- Treat all parties to a real estate transaction honestly and fairly.

### A LICENSE HOLDER CAN REPRESENT A PARTY IN A REAL ESTATE TRANSACTION:

**AS AGENT FOR OWNER (SELLER/LANDLORD):** The broker becomes the property owner's agent through an agreement with the owner, usually in a written listing to sell or property management agreement. An owner's agent must perform the broker's minimum duties above and must inform the owner of any material information about the property or transaction known by the agent, including information disclosed to the agent or subagent by the buyer or buyer's agent.

**AS AGENT FOR BUYER/TENANT:** The broker becomes the buyer/tenant's agent by agreeing to represent the buyer, usually through a written representation agreement. A buyer's agent must perform the broker's minimum duties above and must inform the buyer of any material information about the property or transaction known by the agent, including information disclosed to the agent by the seller or seller's agent.

**AS AGENT FOR BOTH - INTERMEDIARY:** To act as an intermediary between the parties the broker must first obtain the written agreement of *each party* to the transaction. The written agreement must state who will pay the broker and, in conspicuous bold or underlined print, set forth the broker's obligations as an intermediary. A broker who acts as an intermediary:

- Must treat all parties to the transaction impartially and fairly;
- May, with the parties' written consent, appoint a different license holder associated with the broker to each party (owner and buyer) to communicate with, provide opinions and advice to, and carry out the instructions of each party to the transaction.
- Must not, unless specifically authorized in writing to do so by the party, disclose:
  - that the owner will accept a price less than the written asking price;
  - that the buyer/tenant will pay a price greater than the price submitted in a written offer; and
  - any confidential information or any other information that a party specifically instructs the broker in writing not to disclose, unless required to do so by law.

**AS SUBAGENT:** A license holder acts as a subagent when aiding a buyer in a transaction without an agreement to represent the buyer. A subagent can assist the buyer but does not represent the buyer and must place the interests of the owner first.

### TO AVOID DISPUTES, ALL AGREEMENTS BETWEEN YOU AND A BROKER SHOULD BE IN WRITING AND CLEARLY ESTABLISH:

- The broker's duties and responsibilities to you, and your obligations under the representation agreement.
- Who will pay the broker for services provided to you, when payment will be made and how the payment will be calculated.

**LICENSE HOLDER CONTACT INFORMATION:** This notice is being provided for information purposes. It does not create an obligation for you to use the broker's services. Please acknowledge receipt of this notice below and retain a copy for your records.

Centric Commercial LLC Licensed Broker /Broker Firm Name or Primary Assumed Business Name	9004397 License No.	couch@centric-re.com Email	512-320-9190 Phone
Craig Couch Designated Broker of Firm	479537 License No.	couch@centric-re.com Email	512-320-9190 Phone
Russell Todd Licensed Supervisor of Sales Agent/ Associate	342608 License No.	todd@centric-re.com Email	512-917-9753 Phone
Andrew Swanson Sales Agent/Associate's Name	507102 License No.	swanson@centric-re.com Email	512-777-9916 Phone

\_\_\_\_\_  
Buyer/Tenant/Seller/Landlord Initials

\_\_\_\_\_  
Date