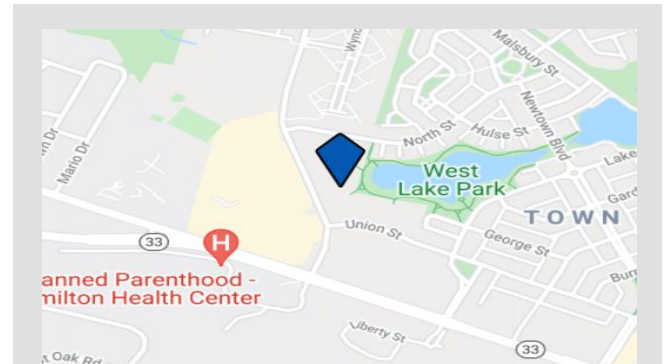




# 1 Washington Boulevard

Robbinsville, NJ 08691

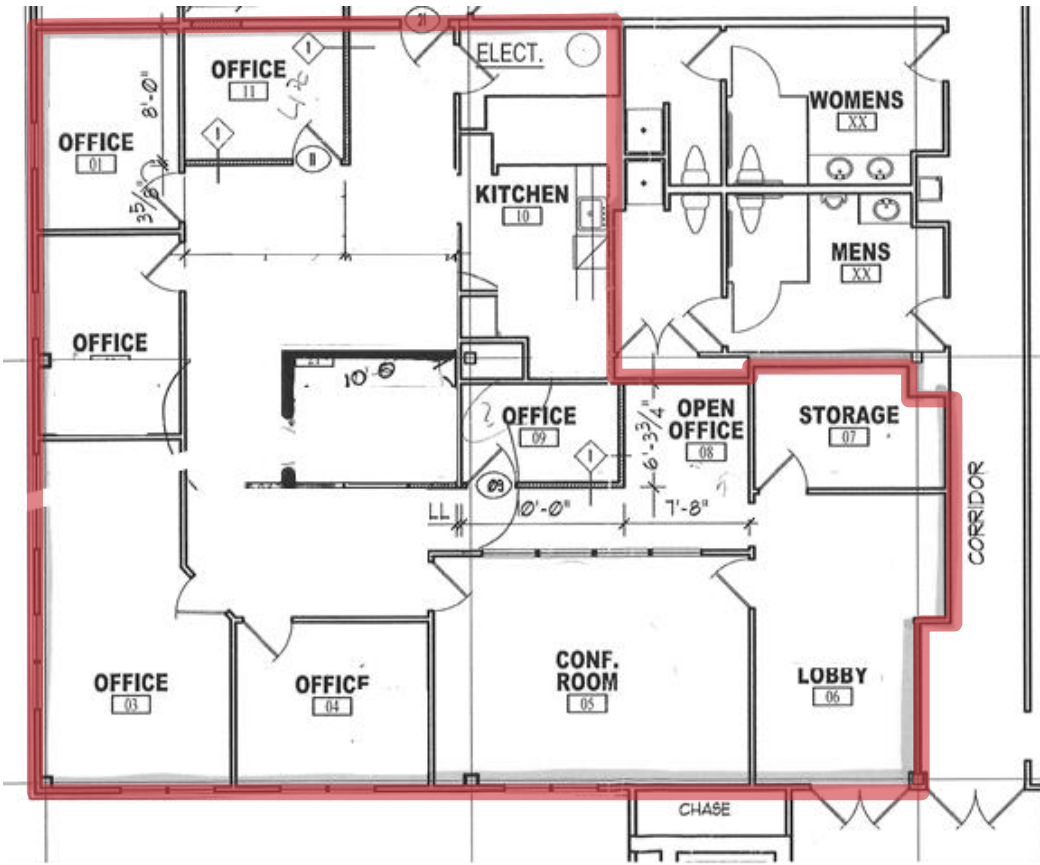
- Available Space: 2,475 RSF and 2,188 RSF
- Lease: \$18.00/SF + Operating Exp. \$8.60/SF
- Ideal Office/Medical building, 40,000 SF
- Class B, 2.5 Acres
- Lake views
- Ample parking, reserved parking Spaces
- Zoning: TC, Block 3.49, Lot 6.014
- Located on Route 33, in Mercer County, walking distance to Washington Town Center, easy access to Route 130, I-95, New Jersey Turnpike Exits 7A and 8



For more information:  
**Gerard Fennelly**  
[fennelly@fennelly.com](mailto:fennelly@fennelly.com)

**For Lease**  
2,475 SF Office Space

**1 Washington Blvd**  
Robbinsville, NJ 08691



**2<sup>nd</sup> Floor**

**Suite 5**  
**2,475 SF**



# 1 Washington Blvd

Robbinsville, NJ 08691

For Lease  
2,188 SF Office Space

2<sup>nd</sup> Floor

Suite 7  
2,188 SF



Matterport 3D Tour

