



[CLICK HERE TO VIEW PROPERTY VIDEO](#)



LAKEPOINT COMMERCE CENTER

BUILDING 300

760 LakePoint Parkway, Cartersville, Georgia 30121

376,245 SF Available for Lease Q2 2026



LEE &
ASSOCIATES

COMMERCIAL REAL ESTATE SERVICES

LEASING AGENT



DEVELOPER

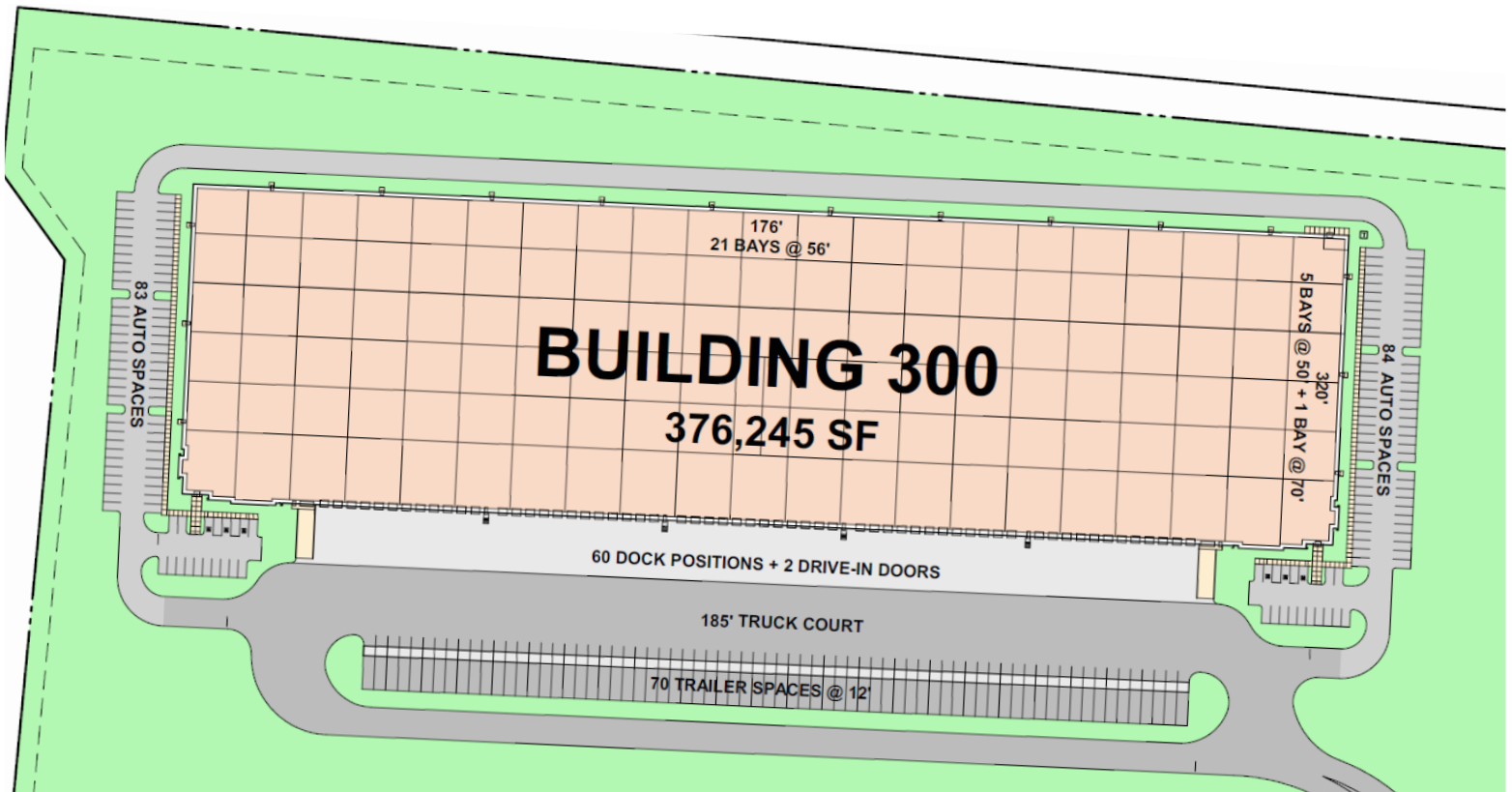
LAKEPOINT COMMERCE CENTER

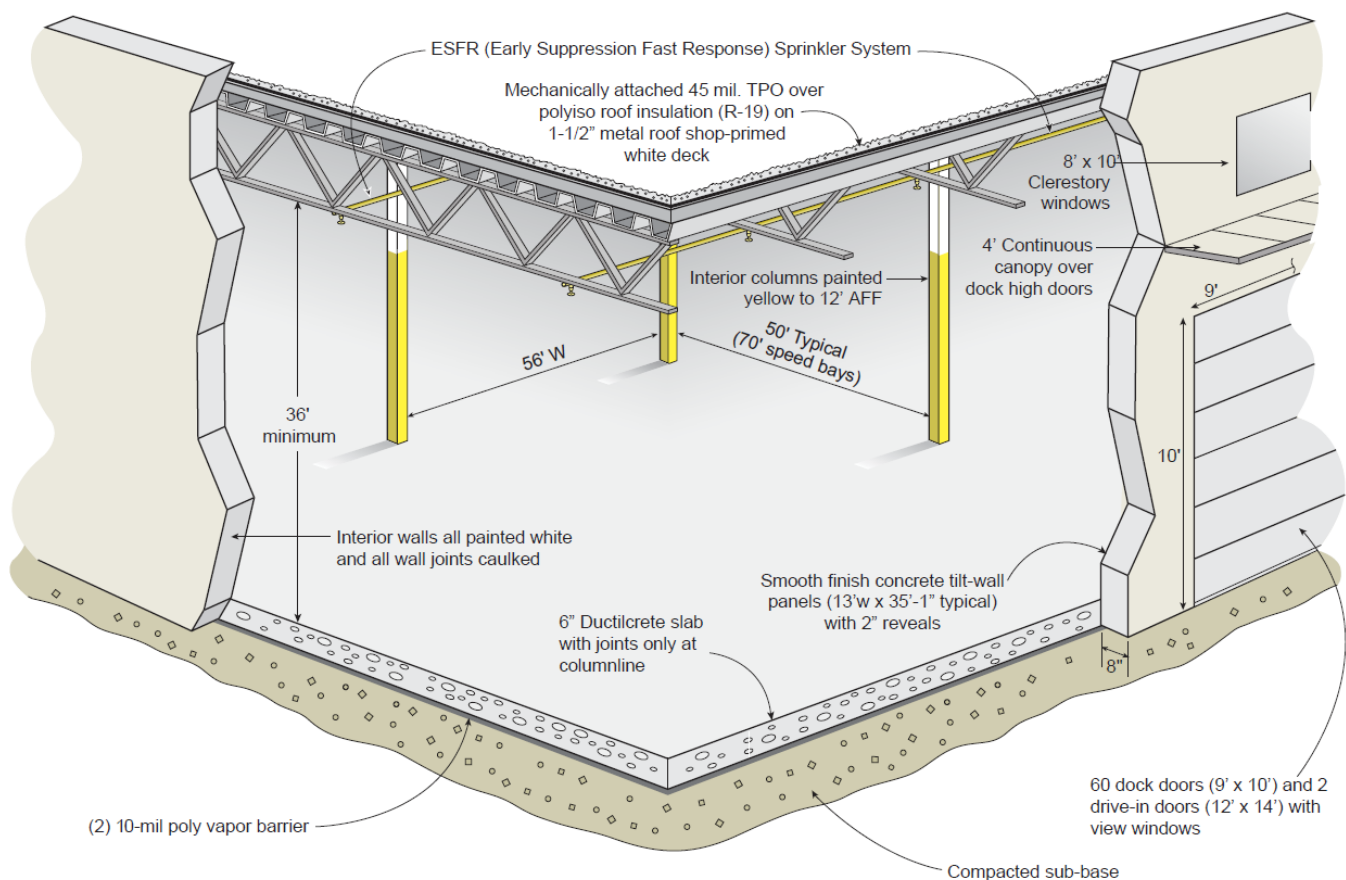
760 LakePoint Parkway, Cartersville, Georgia 30121

376,245 SF Available for Lease Q2 2026

Core5 LakePoint Commerce Center is strategically located less than one mile from I-75 in the heart of Northwest Georgia's industrial corridor. The site offers excellent highway access and is just under 60 miles from the Appalachian Regional Port, providing direct rail connectivity to the Port of Savannah. This prime location makes LakePoint Commerce Center an ideal hub for local, regional, and national distribution.

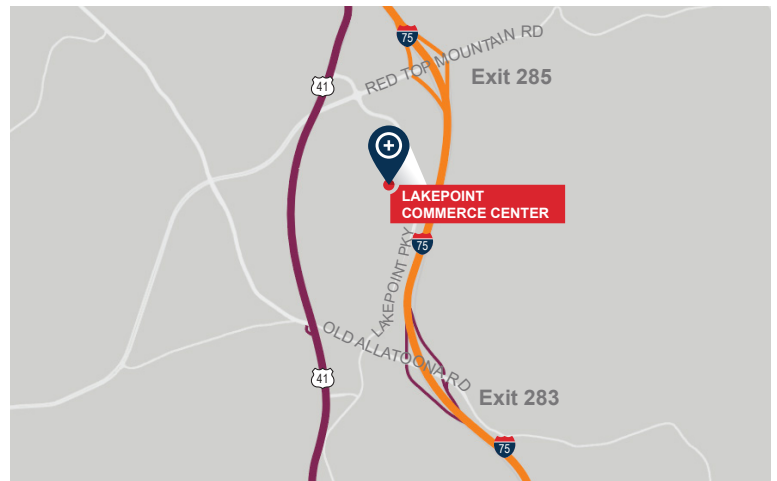
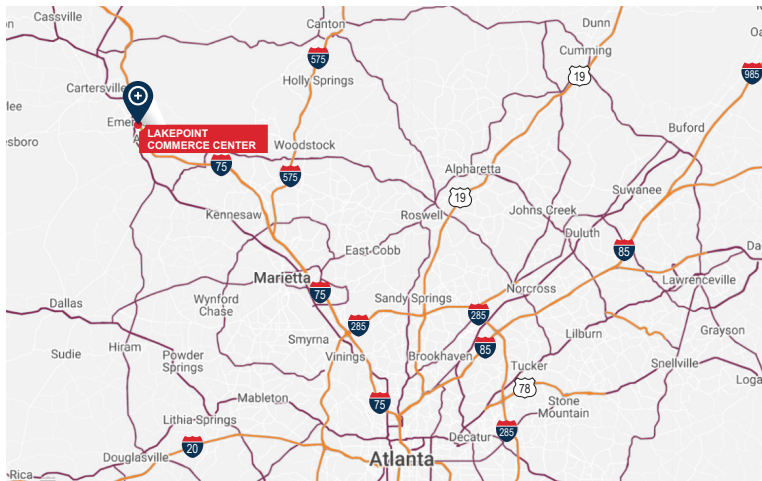
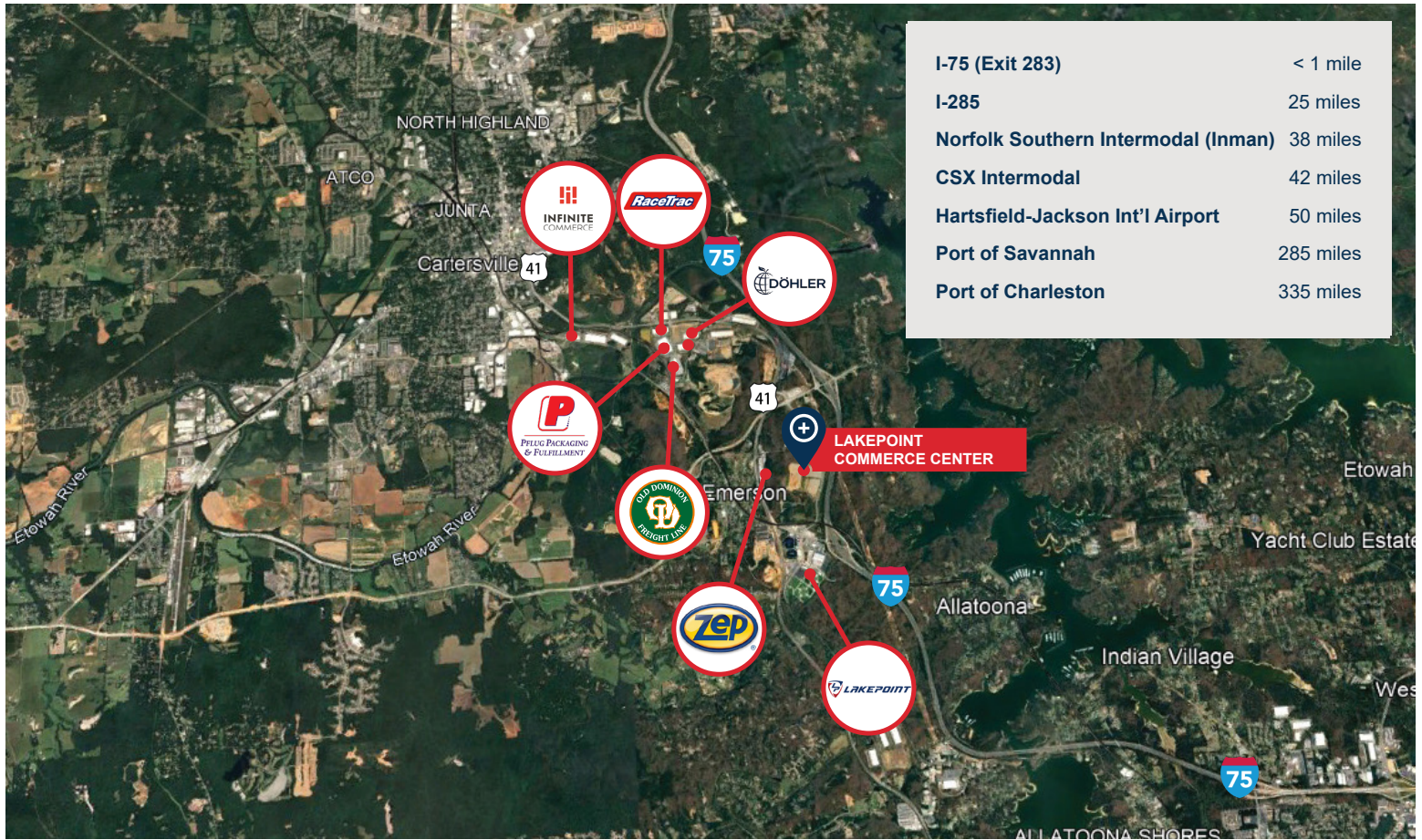
Bartow County is home to more than 140 manufacturers and boasts one of Georgia's strongest labor markets, with a population of over one million people within a 45-minute drive.



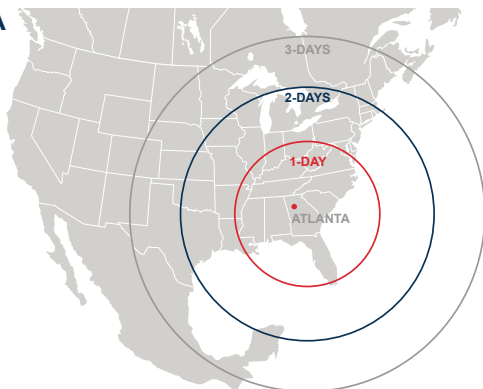


BUILDING SPECIFICATIONS

Square Footage	376,245 SF (320' x 1176')
Configuration	Front Load
Column Spacing	56' wide x 50' deep, with 70' loading bays (17,920 SF bays)
Clear Height	36' clear minimum
Dock High Doors	60 – 9' x 10' insulated dock high doors
Drive-In Doors	2 – 12' x 14' ramped, drive-in doors
Truck Court Depth	185' deep with 60' concrete apron
Auto Parking	167 auto spaces
Trailer Storage	70 trailer storage locations
Electrical	277/480 volt, 3 phase, Two (2) 2,000 amp services
Sprinkler	ESFR sprinkler system



**DAYS TRUCK
DRIVE TO/FROM
ATLANTA**



CORE5
INDUSTRIAL PARTNERS

Mitchell Townsend
Vice President Investments

O 404.262.5418
C 706.537.9520

mtownsend@c5ip.com



**LEE &
ASSOCIATES**

COMMERCIAL REAL ESTATE SERVICES

Billy Snowden, SIOR
Executive VP / Principal

O 404.442.2839
C 770.354.5981

bsnowden@lee-associates.com

Willie Candler
Principal

O 404.442.2802
C 770.881.1368

wcandler@lee-associates.com

© Copyright 2021 Core5 Industrial Partners, LLC. All rights reserved.
CORE5, CORE5 INDUSTRIAL PARTNERS, and the stylized "C" CORE5 INDUSTRIAL PARTNERS design / logo are service marks of Core5 Industrial Partners, LLC for its real estate services, namely, acquisition, rental, brokerage, development, leasing, and management of industrial real estate property. These marks may not be used without express permission of Core5 Industrial Partners, LLC.