



**BILTMORE**  
TALON CENTER

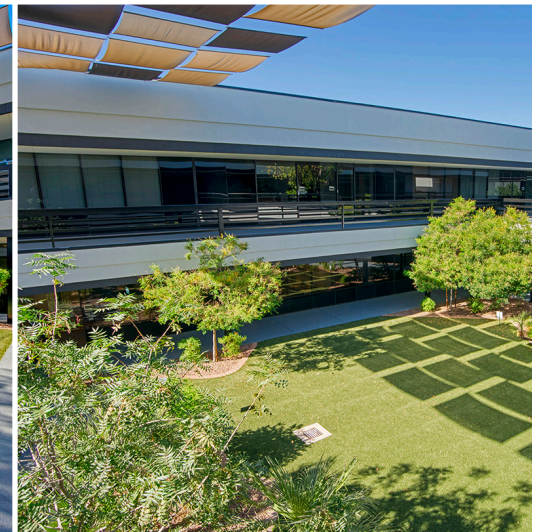


OFFICE / MEDICAL SPACE FOR LEASE  
3333 E CAMELBACK RD, PHOENIX, AZ 85018



## PROPERTY OVERVIEW

- Parking Ratio: 5/1,000 SF
- Total Project Size: ±96,248 SF
- 24-Hour Access
- Monument Signage
- Abundant Natural Light
- Great Covered Outdoor Seating
- Prestigious Camelback Corridor Location
- Abundant Covered Canopy Parking
- Restaraunt Coming Soon
- We are experiencing on average a 37% increase in business for all new tenants
- 450 parking spaces feet away from your office



# LOCATION

BILTMORE FASHION CENTER

BILTMORE PLAZA SHOPPING CENTER

SAFeway

★BOBBY-Q★  
*Great Steaks★Real BBQ!*

KEEGAN'S

zookz  
*last health conscious name*

- Matt's -  
BIG  
BREAKFAST

Hava Java

Starbucks

Dushi 32

The Collins

CAMELBACK EAST VILLAGE

FIRST WATCH

The TAVERN

Jarbell's  
RESTAURANT WINE BAR WINE STORE

Tomaso's

ups

  
**BILTMORE**  
TALON CENTER

- Camelback Road Frontage
- Over 115 Restaurants Within a 2 Mile Radius
- Mountain View
- 13 Min to Phoenix Sky Harbor

CAMELBACK RD

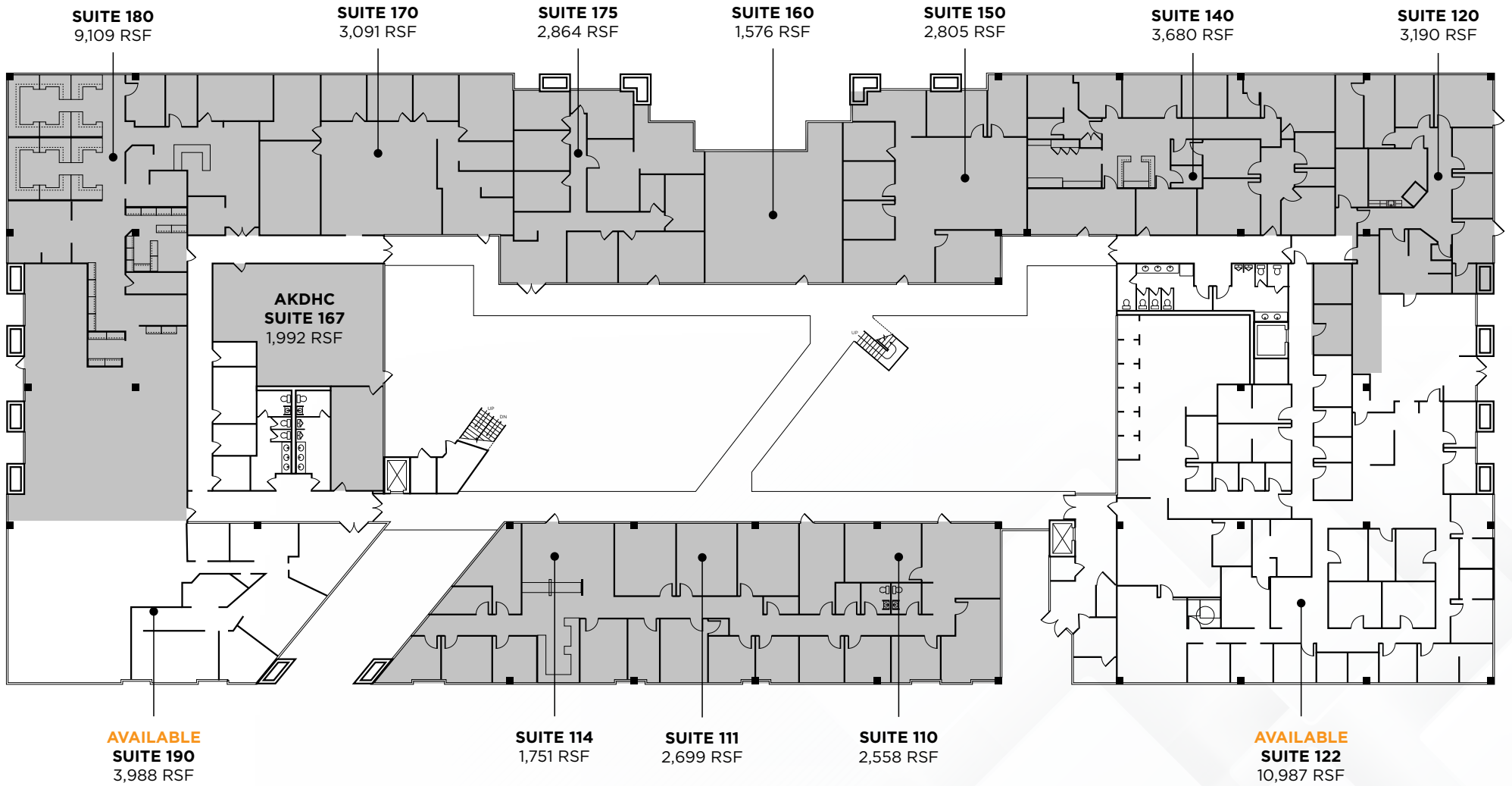


RESTAURANT COMING SOON



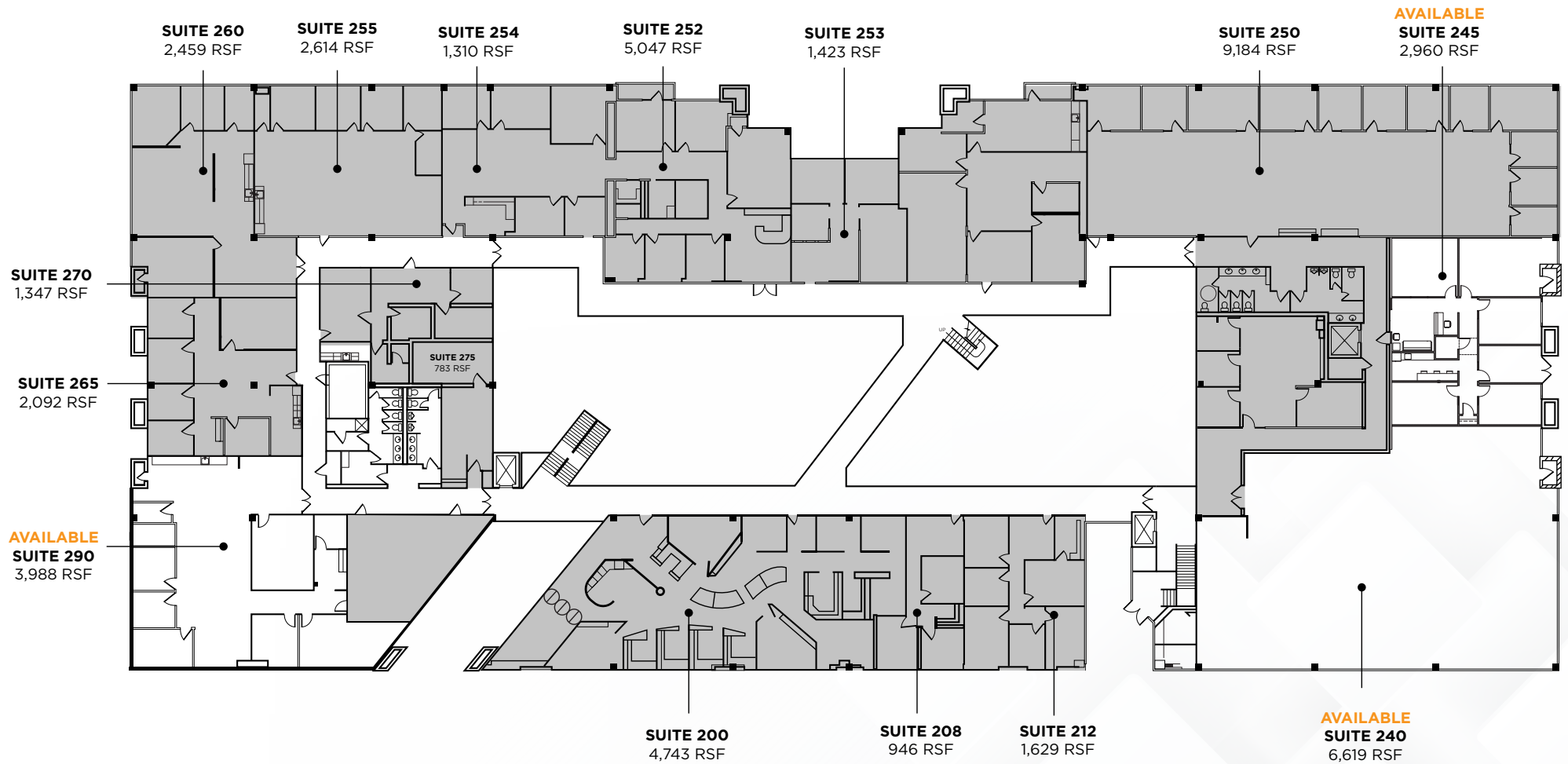


# 1ST FLOOR





# 2ND FLOOR



 Suite 122





# **BILTMORE**

## TALON CENTER



For more information, please contact:

**MICHAEL CRYSTAL**

+1 602 229 5857

[michael.crystal@cushwake.com](mailto:michael.crystal@cushwake.com)

**RYAN LAMBETH**

+1 602 468 8570

[ryan.lambeth@cushwake.com](mailto:ryan.lambeth@cushwake.com)