

TCG HOLECEK COMMUNITY SERVICE CENTER

FOR LEASE • 2ND FLOOR OFFICE SPACE
4330 TAMIAMI TRAIL EAST • NAPLES, FL 34112



CONTACT US:

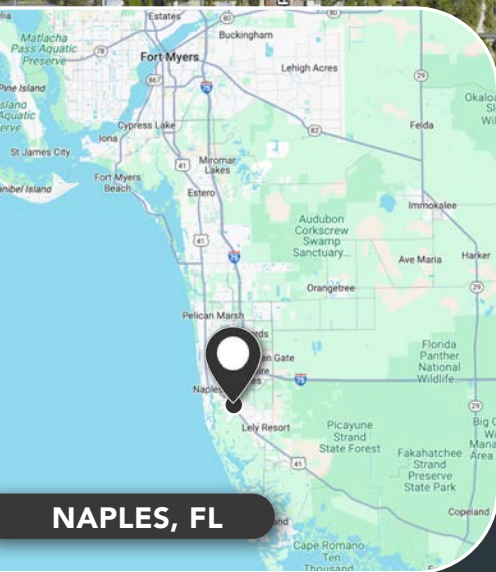
TY HENSLEY
Senior Advisor
239.334.3040
Ty.Hensley@TrinityCRE.com





HOLECEK COMMUNITY SERVICE CENTER

FOR LEASE • 2ND FLOOR OFFICE SPACE
4330 TAMIAMI TRAIL EAST • NAPLES, FL 34112



2025 DEMOGRAPHICS 4330 TAMIAMI TRAIL E



AVERAGE H.H INCOME

1 MILE

\$95,907

3 MILE

\$124,454

5 MILE

\$140,209



POPULATION

8,139

52,667

103,617



EMPLOYMENT DENSITY

3,522

25,373

61,601

PROPERTY FEATURES

PRICE

\$21/SF Gross

AVAILABLE

2,000± SF

ZONING

Commercial

LOCATION

The subject site is located on the west side of Tamiami Trl E, Just north of Rattlesnake Hammock road.



TrinityCRE.com

9450 Corkscrew Palms Cir • Suite 101 • Estero, FL 33928

© 2025 Trinity Commercial Group

This information is considered accurate, but not guaranteed.

MEMBER OF:



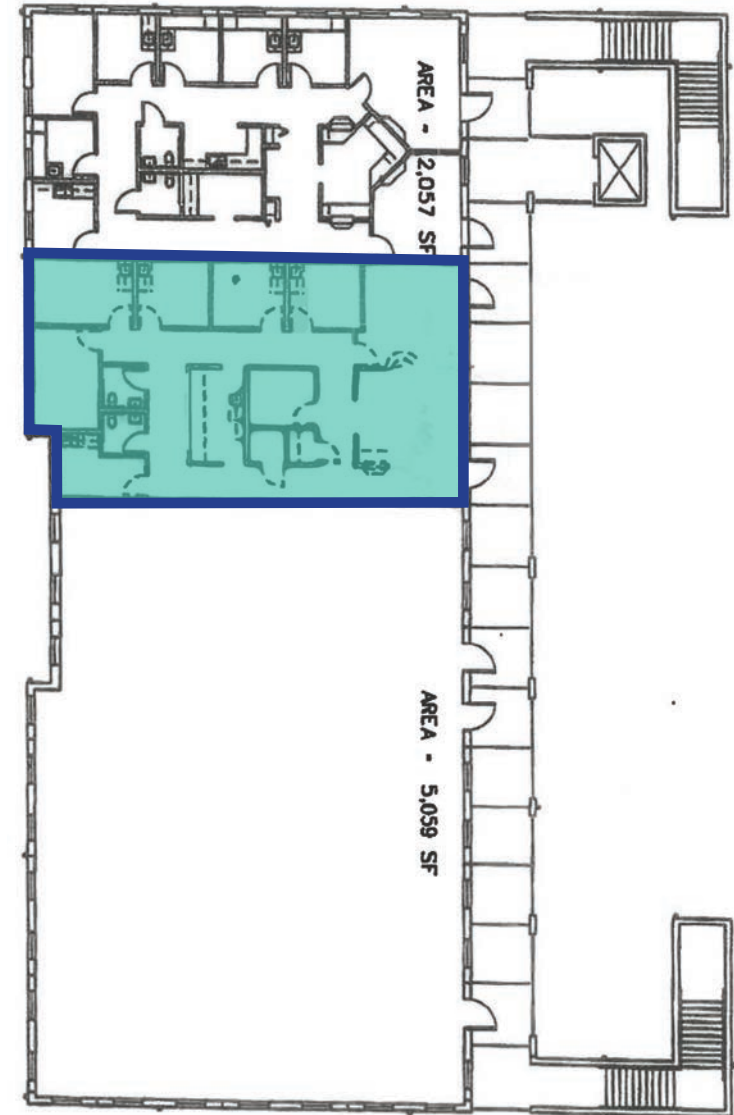
HOLECEK COMMUNITY SERVICE CENTER

FOR LEASE • 2ND FLOOR OFFICE SPACE
4330 TAMIAMI TRAIL EAST • NAPLES, FL 34112

INTERIOR PHOTOS



SITE PLAN



TrinityCRE.com

9450 Corkscrew Palms Cir • Suite 101 • Estero, FL 33928

© 2025 Trinity Commercial Group

This information is considered accurate, but not guaranteed.

MEMBER OF:
SITE SOURCE
RETAIL BROKER NETWORK