

1556 – 1562 TELEGRAPH ROAD  
PONTIAC, MICHIGAN

INDUSTRIAL FOR SALE OR LEASE

For Sale: 15,367 Square Feet

For Lease: 6,461 Square Feet



**SIGNATURE  
ASSOCIATES**  
KNOW SIGNATURE | KNOW RESULTS



## PROPERTY FEATURES

- 6,461 square feet available
- 648 square feet office
- 15,367 square foot building
- 12'-20' clear height
- Overhead doors: 12' x 14', 10' x 10'
- Racking can stay or be removed prior to occupancy
- Additional mezzanine area on top of racks
- Overhead door accesses the main warehouse
- The lower bay area has a 10' x 10' overhead door
- Lease Rate: \$6.50/sq. ft. NNN
- Sale Price: \$922,020 (\$60.00/sq. ft.)



For more information, please contact:

**PAUL HOGE**  
(248) 948 0103  
paulhoge@signatureassociates.com

**KRIS PAWLOWSKI**  
(248) 359 3801  
kpawlowski@signatureassociates.com

**SIGNATURE ASSOCIATES**  
One Towne Square, Suite 1200  
Southfield, MI 48076  
www.signatureassociates.com

# 1556 – 1562 Telegraph Road - Pontiac, Michigan

Industrial For Sale or Lease

For Lease –  
6,461 SF  
For Sale –  
15,367 SF

## Additional Photos



For more information, please contact:

**PAUL HOGE**  
(248) 948 0103  
paulhoge@signatureassociates.com

**KRIS PAWLOWSKI**  
(248) 359 3801  
kpawlowski@signatureassociates.com

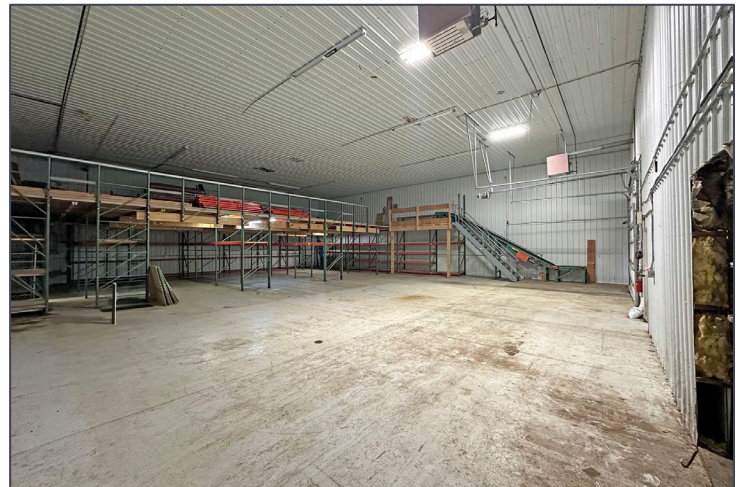
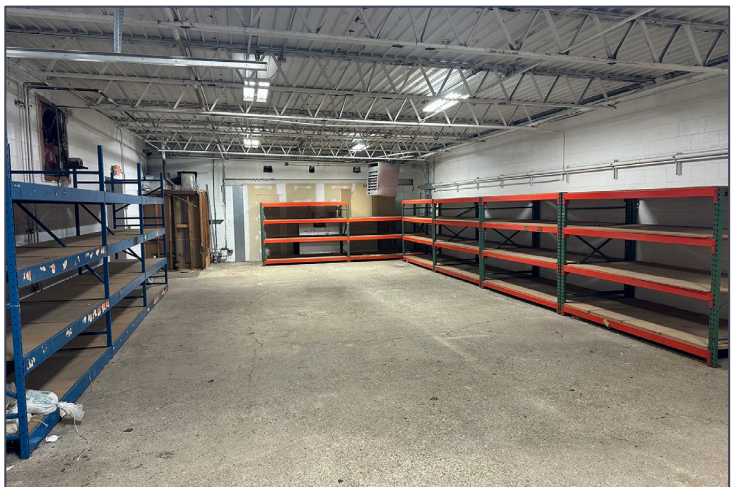
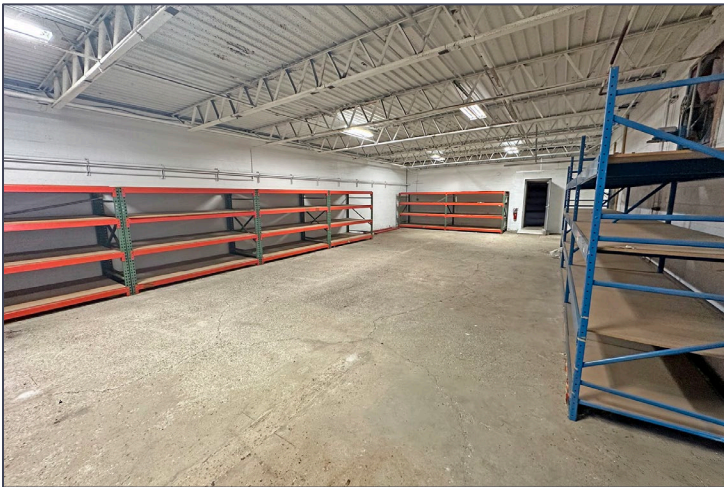
**SIGNATURE ASSOCIATES**  
One Towne Square, Suite 1200  
Southfield, MI 48076  
www.signatureassociates.com

# 1556 – 1562 Telegraph Road - Pontiac, Michigan

## Industrial For Sale or Lease

For Lease –  
6,461 SF  
For Sale –  
15,367 SF

### Additional Photos



For more information, please contact:

**PAUL HOGE**  
(248) 948 0103  
paulhoge@signatureassociates.com

**KRIS PAWLOWSKI**  
(248) 359 3801  
kpawlowski@signatureassociates.com

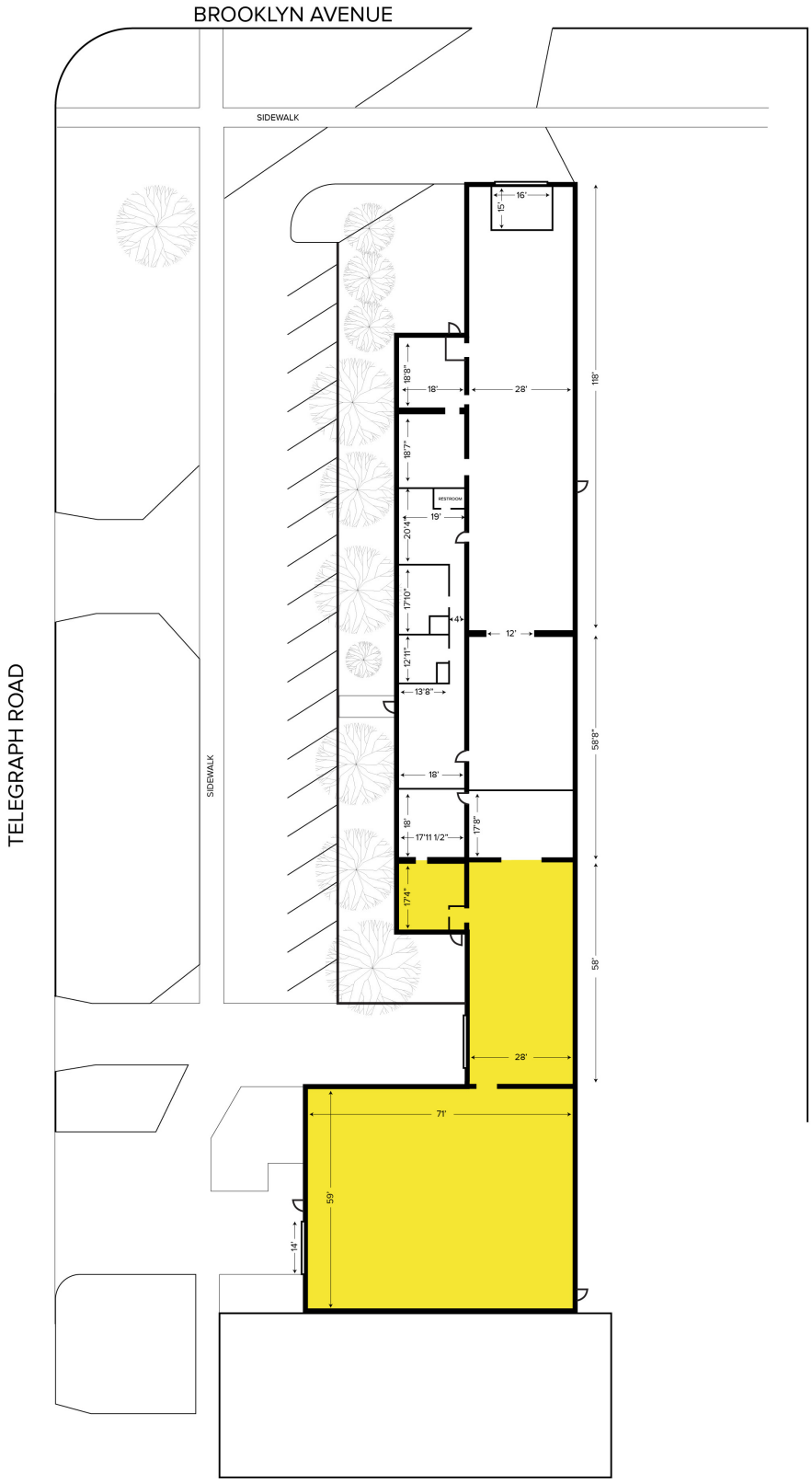
**SIGNATURE ASSOCIATES**  
One Towne Square, Suite 1200  
Southfield, MI 48076  
www.signatureassociates.com

# 1556 – 1562 Telegraph Road - Pontiac, Michigan

## Industrial For Sale or Lease

For Lease –  
6,461 SF  
For Sale –  
15,367 SF

### Site Plan



For more information, please contact:

**PAUL HOGE**  
(248) 948 0103  
paulhoge@signatureassociates.com

**KRIS PAWLOWSKI**  
(248) 359 3801  
kpawlowski@signatureassociates.com

**SIGNATURE ASSOCIATES**  
One Towne Square, Suite 1200  
Southfield, MI 48076  
www.signatureassociates.com

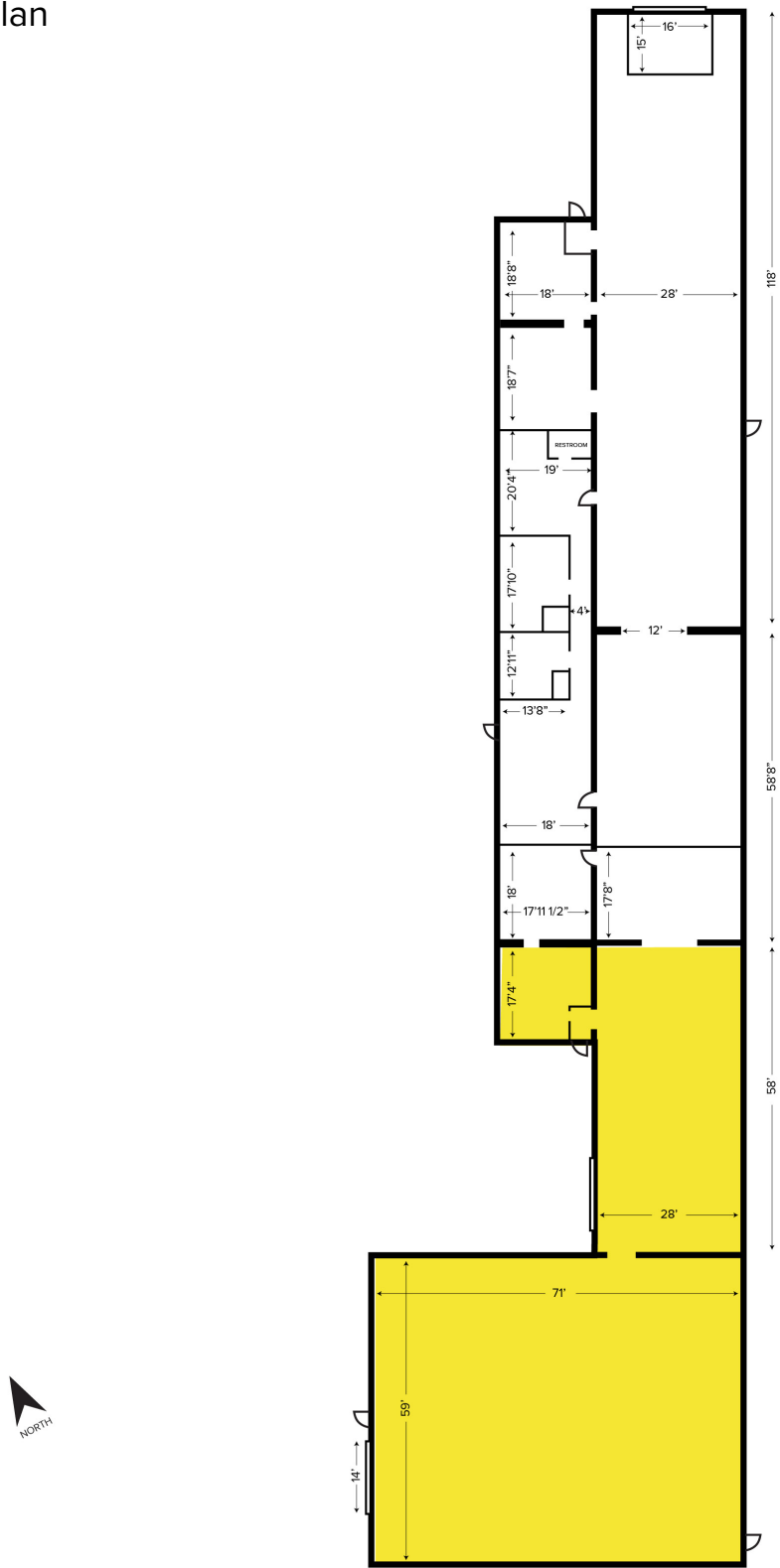
Information is subject to verification and no liability for errors or omissions is assumed. Price is subject to change and listing withdrawal.

# 1556 – 1562 Telegraph Road - Pontiac, Michigan

Industrial For Sale or Lease

For Lease –  
6,461 SF  
For Sale –  
15,367 SF

## Floor Plan



For more information, please contact:

**PAUL HOGE**  
(248) 948 0103  
paulhoge@signatureassociates.com

**KRIS PAWLOWSKI**  
(248) 359 3801  
kpawlowski@signatureassociates.com

**SIGNATURE ASSOCIATES**  
One Towne Square, Suite 1200  
Southfield, MI 48076  
www.signatureassociates.com

# 1556 – 1562 Telegraph Road - Pontiac, Michigan

Industrial For Sale or Lease

For Lease –  
6,461 SF  
For Sale –  
15,367 SF

Aerial



For more information, please contact:

**PAUL HOGE**  
(248) 948 0103  
paulhoge@signatureassociates.com

**KRIS PAWLOWSKI**  
(248) 359 3801  
kpawlowski@signatureassociates.com

**SIGNATURE ASSOCIATES**  
One Towne Square, Suite 1200  
Southfield, MI 48076  
www.signatureassociates.com