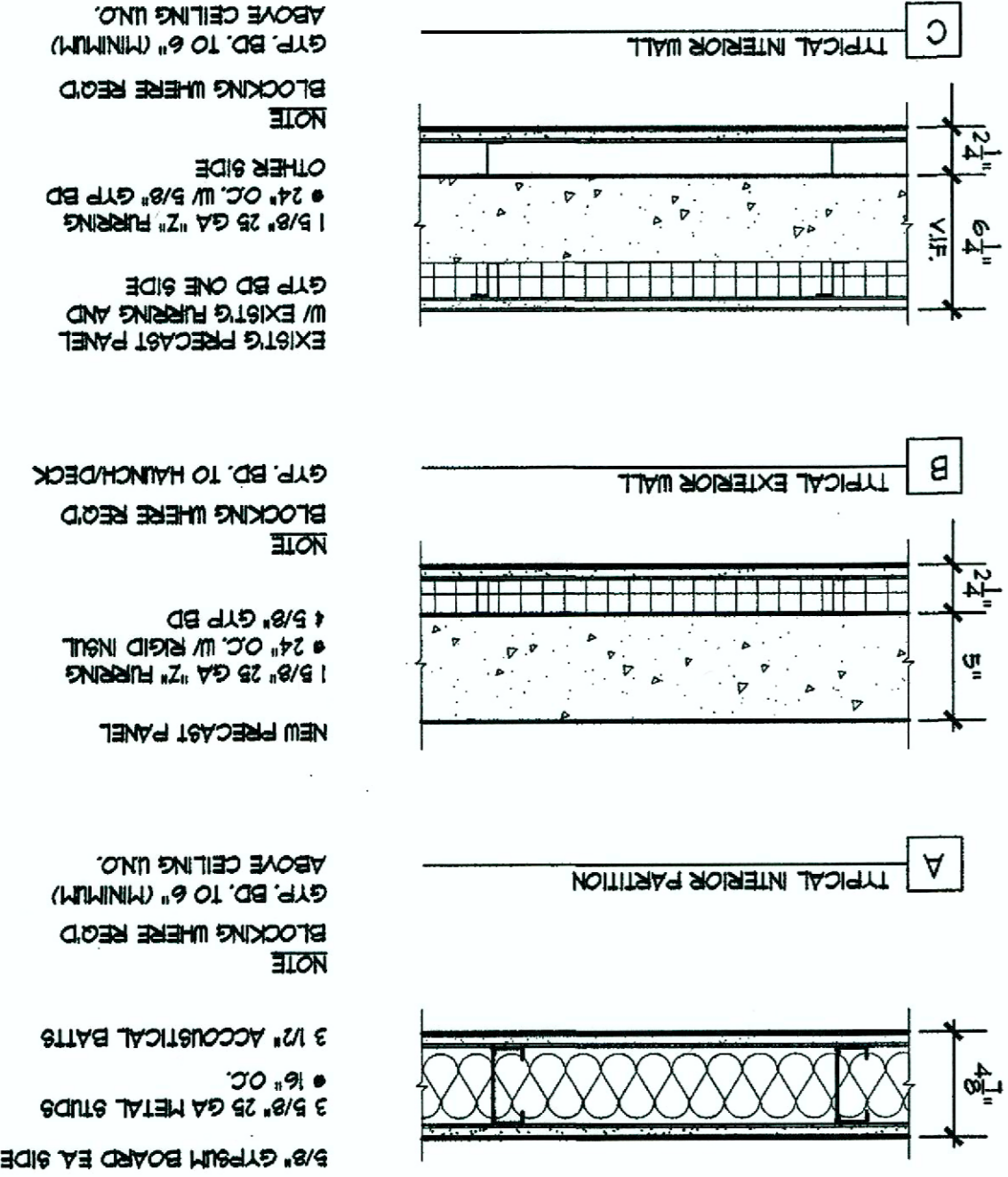


BUILDING PLAN NOTES

1. PROVIDE (5) 2'-0" DEEP, 3/4" THICK, ADJUSTABLE PLM SHELVES ON HEAVY DUTY STANDARDS @ 3'-0" O.C. (MAX). PROVIDE BLOCKING FOR STANDARDS.
2. PROVIDE PLM COUNTER W/ BACKSPLASH AND (2) 1'-0" DEEP, 3/4" THICK, ADJUSTABLE FLAM SHELVES ON HEAVY DUTY STANDARDS @ 3'-0" O.C. (MAX). COORDINATE ABOVE. PROVIDE BLOCKING FOR COUNTER AND STANDARDS. COORDINATE COUNTER DEPTH AND HEIGHT W/ OWNER'S UNDERCOUNTER SAFES. (SAFES AND SAFE RELOCATION AND INSTALLATION BY OWNER) PLM TO MATCH TELLER LINE.
3. INFILL EXISTING WINDOW OPENG. PROVIDE ACCUSTICAL BATT INSULATION. COORDINATE W/ OWNER FOR RECESS OR BLOCKING REQUIRED FOR OWNER SUPPLIED DISPLAY/RATE BOARD.
4. INSULATE AND CAULK WALL PENETRATION AT AHD. TRIM OUT W/ PAINTABLE TEAR AWAY J-BEAD. (AHD, AND AHD, RELOCATION AND INSTALLATION BY OWNER)
5. CUT EXISTG TELLERLINE MILLWORK AS REQUIRED FOR NEW WALL OPENG. FIELD PATCH/LAMINATE TO MATCH EXISTG FINISH. PROVIDE ADDITIONAL SUPPORTS IF REQUIRED.
6. REPAIR EXISTG COUNTERTOP AND CABINETS AS READ DUE TO REMOVAL OF CLOSET.
7. INFILL EXISTG DOOR OPENG. PROVIDE ACCUSTICAL BATT INSULATION.

PARTITION TYPES

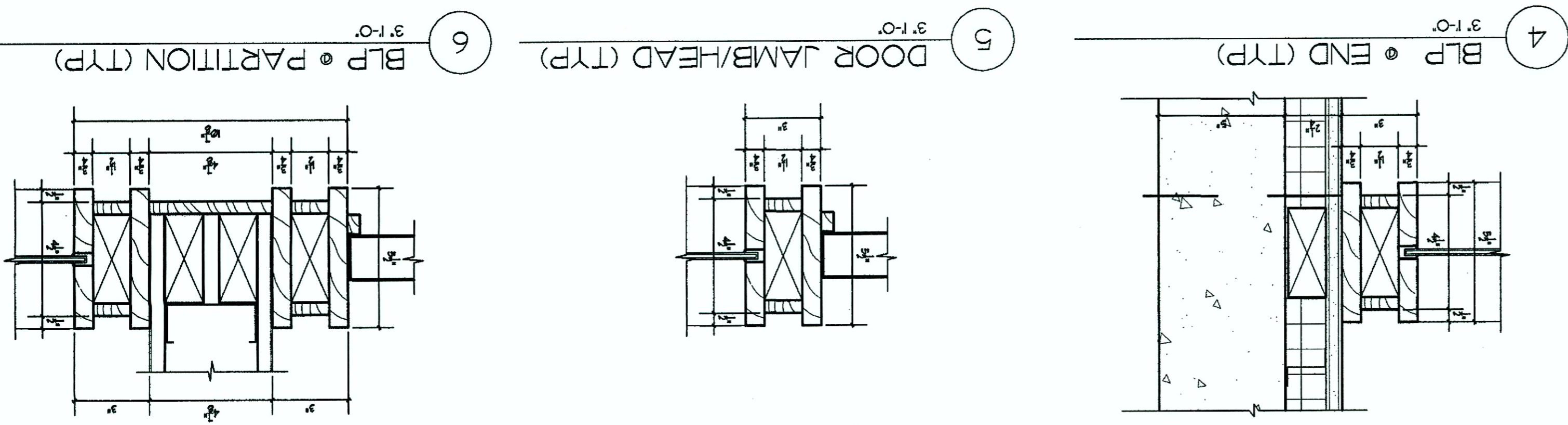


NOTE: BLOCKING WHERE RECD. ABOVE CEILING UNO.

NOTE: BLOCKING WHERE RECD. GYP. BD. TO 6" (MINIMUM) ABOVE CEILING UNO.

NOTE: BLOCKING WHERE RECD. GYP. BD. TO HANCA/DECK.

NOTE: BLOCKING WHERE RECD. GYP. BD. TO 6" (MINIMUM) ABOVE CEILING UNO.



1 BLP BASE (TYP) 3/4" = 1'-0"
 2 BLP HEAD (TYP) 3/4" = 1'-0"
 3 BLP MULLION (TYP) 3/4" = 1'-0"
 4 BLP END (TYP) 3/4" = 1'-0"
 5 DOOR JAMB/HEAD (TYP) 3/4" = 1'-0"
 6 BLP PARTITION (TYP) 3/4" = 1'-0"