



SAURAGE ROTENBERG™
COMMERCIAL REAL ESTATE

FOR SUBLEASE
23' - DOCK-HIGH - 100% HVAC - SPRINKLERED - DISTRIBUTION SPACE
1620 MARTIN LUTHER KING BLVD., HOUMA, LA 70360

8,527 SF

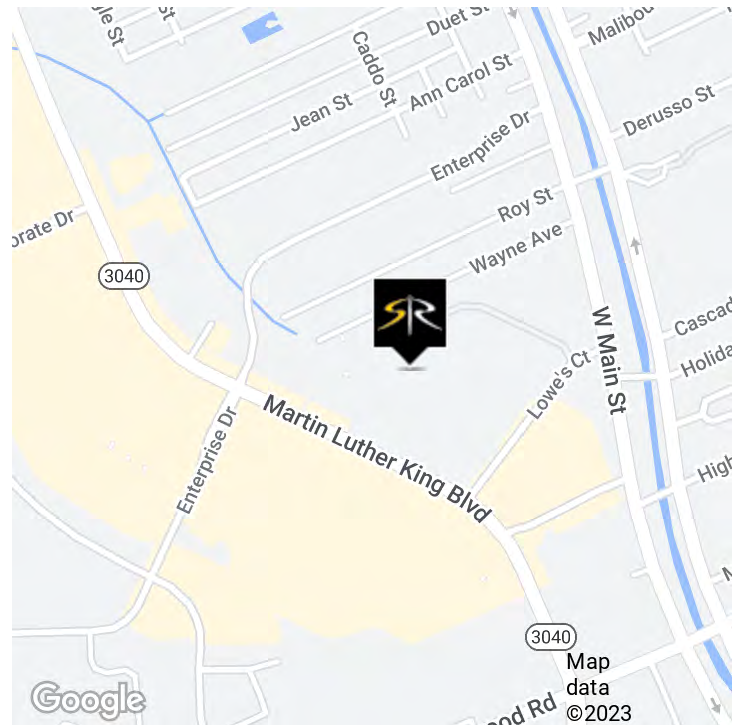


OFFERING SUMMARY

Sublease Rate:	\$5.75 SF/yr (NNN)
Available SF:	8,527 SF

PROPERTY HIGHLIGHTS

- 23' - Dock-High - 100% HVAC - Sprinklered - Distribution Space
- Sublease Opportunity
- 8,527 SqFt Available for Sublease
- Two (2) Dock-High Doors, One (1) Grade-Level with Ramp
- 19' to Metal Ceiling Truss
- 23' 3" to Metal Roof Deck
- See Attached Floor Plan for Column Spacing
- Sprinklered



MATTHEW SHIRLEY
Associate Broker
(D)225.907.5214
matthew@sr-cre.com

SAURAGE ROTENBERG COMMERCIAL REAL ESTATE, LLC
5135 Bluebonnet Boulevard
Baton Rouge, LA 70809
225.766.0000 | sauragerotenberg.com

The information contained herein has either been given to us by property owners or is from sources deemed reliable and is believed to be correct, it is not in any way warranted or guaranteed by Saurage Rotenberg Commercial Real Estate. This information is submitted subject to errors, omissions, changes in price, rental or other conditions, withdrawal without notice, and to any special listing conditions imposed by the principals. Licensed in Louisiana & Mississippi.



SAURAGE ROTENBERG™
COMMERCIAL REAL ESTATE

FOR SUBLEASE
23' - DOCK-HIGH - 100% HVAC - SPRINKLERED - DISTRIBUTION SPACE
1620 MARTIN LUTHER KING BLVD., HOUMA, LA 70360

8,527 SF



MATTHEW SHIRLEY
Associate Broker
(D)225.907.5214
matthew@sr-cre.com

SAURAGE ROTENBERG COMMERCIAL REAL ESTATE, LLC
5135 Bluebonnet Boulevard
Baton Rouge, LA 70809
225.766.0000 | sauragerotenberg.com

The information contained herein has either been given to us by property owners or is from sources deemed reliable and is believed to be correct, it is not in any way warranted or guaranteed by Saurage Rotenberg Commercial Real Estate. This information is submitted subject to errors, omissions, changes in price, rental or other conditions, withdrawal without notice, and to any special listing conditions imposed by the principals. Licensed in Louisiana & Mississippi.



SAURAGE ROTENBERG™
COMMERCIAL REAL ESTATE

AERIAL OVERVIEW
23' - DOCK-HIGH - 100% HVAC - SPRINKLERED - DISTRIBUTION SPACE
1620 MARTIN LUTHER KING BLVD., HOUMA, LA 70360

8,527 SF



ASHLEY

MATTHEW SHIRLEY
Associate Broker
(D)225.907.5214
matthew@sr-cre.com

SAURAGE ROTENBERG COMMERCIAL REAL ESTATE, LLC
5135 Bluebonnet Boulevard
Baton Rouge, LA 70809
225.766.0000 | sauragerotenberg.com

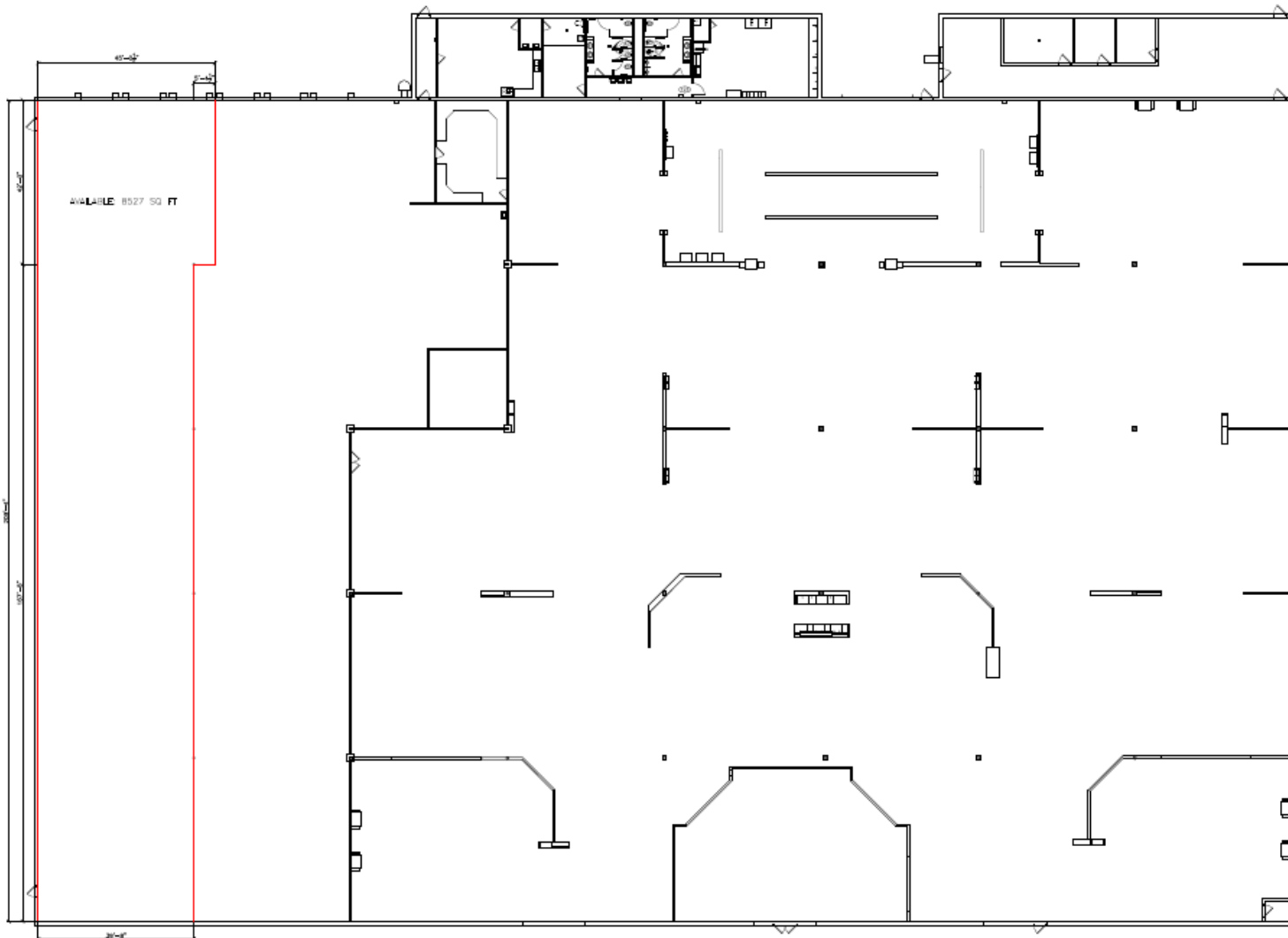
The information contained herein has either been given to us by property owners or is from sources deemed reliable and is believed to be correct, it is not in any way warranted or guaranteed by Saurage Rotenberg Commercial Real Estate. This information is submitted subject to errors, omissions, changes in price, rental or other conditions, withdrawal without notice, and to any special listing conditions imposed by the principals. Licensed in Louisiana & Mississippi.



SAURAGE ROTENBERG™
COMMERCIAL REAL ESTATE

FLOOR PLAN
23' - DOCK-HIGH - 100% HVAC - SPRINKLERED - DISTRIBUTION SPACE
1620 MARTIN LUTHER KING BLVD., HOUMA, LA 70360

8,527 SF



MATTHEW SHIRLEY
Associate Broker
(D)225.907.5214
matthew@sr-cre.com

SAURAGE ROTENBERG COMMERCIAL REAL ESTATE, LLC
5135 Bluebonnet Boulevard
Baton Rouge, LA 70809
225.766.0000 | sauragerotenberg.com

The information contained herein has either been given to us by property owners or is from sources deemed reliable and is believed to be correct, it is not in any way warranted or guaranteed by Saurage Rotenberg Commercial Real Estate. This information is submitted subject to errors, omissions, changes in price, rental or other conditions, withdrawal without notice, and to any special listing conditions imposed by the principals. Licensed in Louisiana & Mississippi.