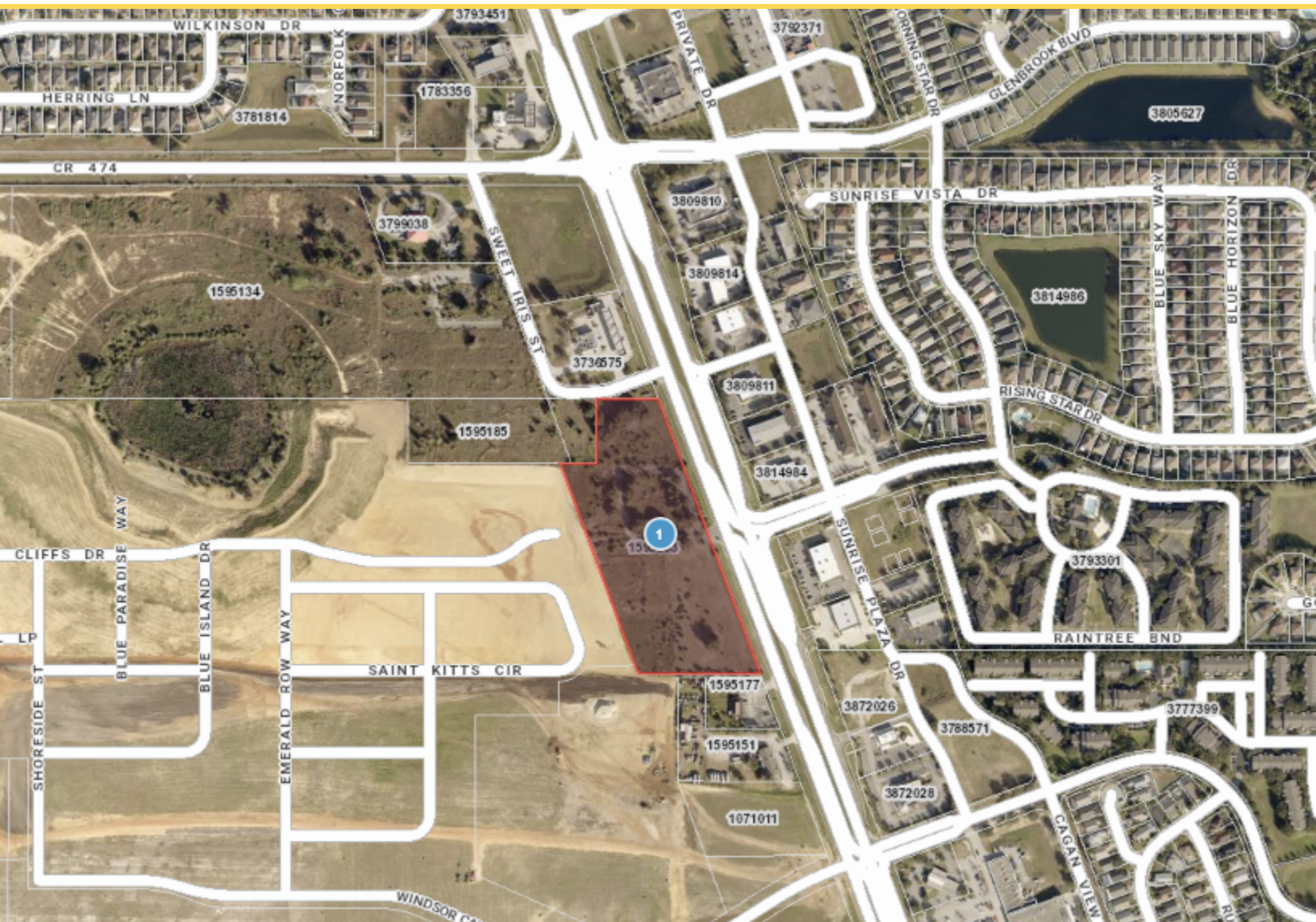


FOR LEASE

NATIONAL LAND REALTY®

High-Traffic Commercial Ground Lease on US-27 in South Lake County

10.19 +/- Acres | Lake County, FL | CALL FOR PRICE/Monthly

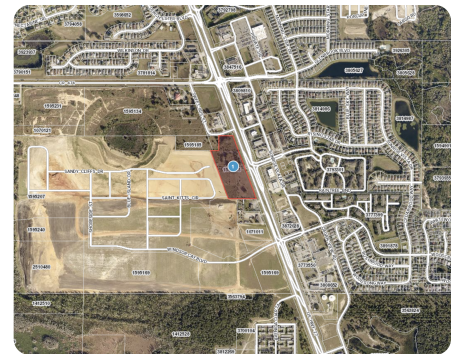
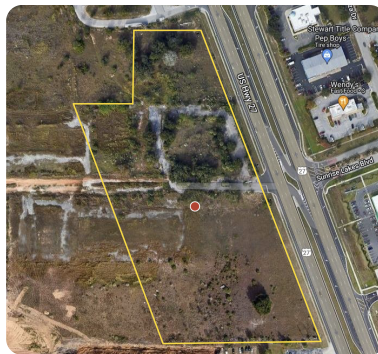
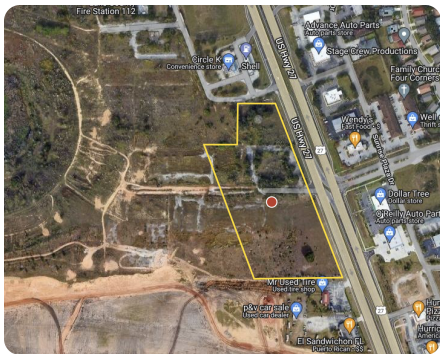
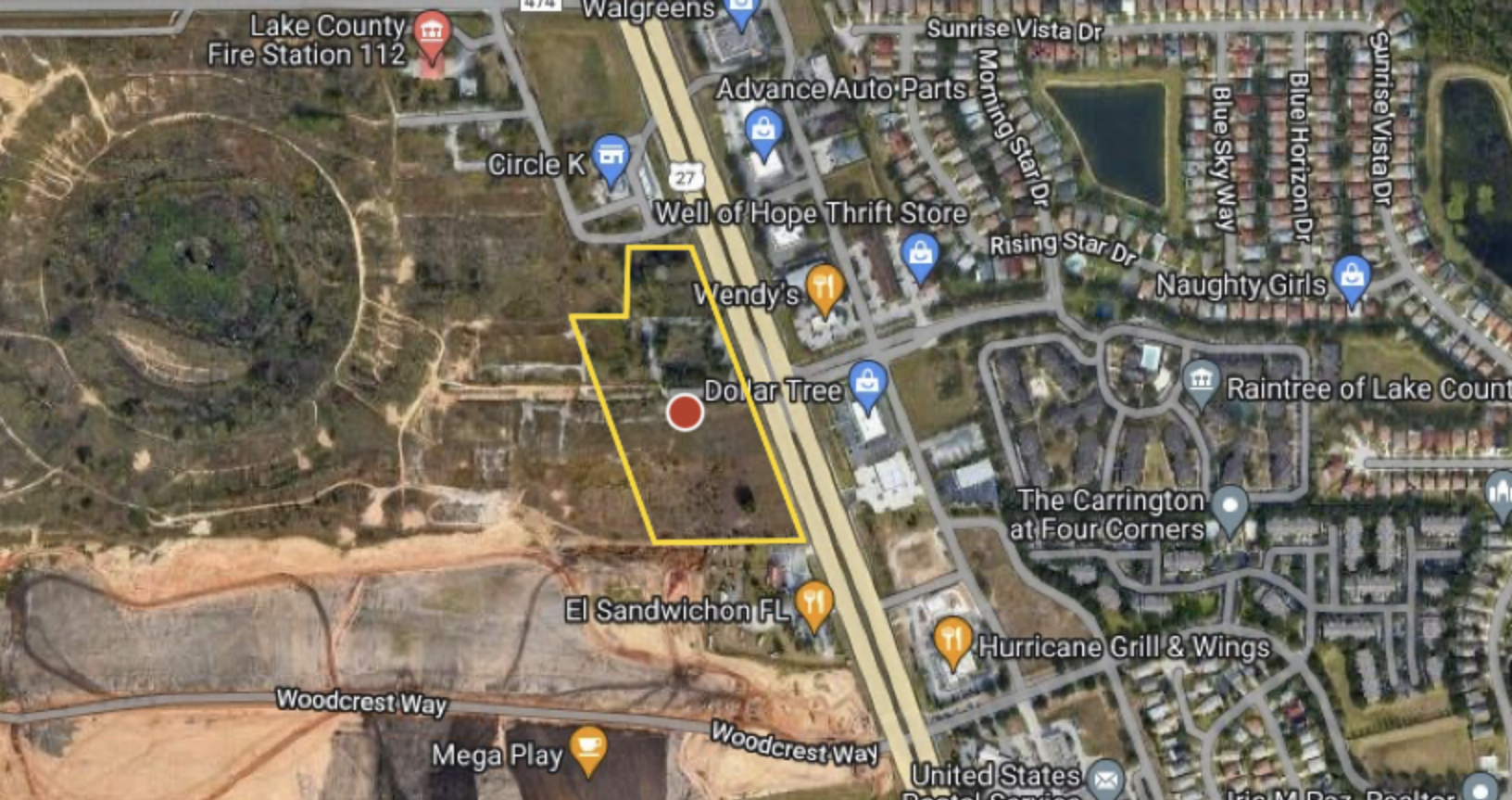


National Land Realty
2180 West First St
Unit 301
Fort Myers, FL 33901
NationalLand.com

Sean Doyle
Office: 855-384-5263
Cell: 407-988-6586
Fax: 864-331-1610
Sdoyle@nationalland.com

Justus Koester
Office: 855-384-5263
Cell: 239-898-0163
Fax: 239-541-8375
Jkoester@nationalland.com

The above information is from sources deemed reliable, however the accuracy is not guaranteed.
National Land Realty assumes no liability for error, omissions or investment results.



PROPERTY SUMMARY

This 10.19-acre commercial ground lease property offers 1,000+ sq. feet of road frontage on US-27 South. This property is in a prime location for businesses seeking high-traffic visibility. Surrounded by commercial businesses such as retail centers, gas stations, pharmacies, and restaurants, the flat terrain of the property offers great accessibility and ample space for parking, landscaping, and outdoor areas.

Zoned for commercial use, businesses have the flexibility to design and construct a commercial space with access to all major utilities including water, electricity, gas, and sewer. With excellent signage opportunities and easy access to major highways, customers can easily find the property. The property is well-suited for car dealerships, outdoor entertainment venues, retail, restaurant, hospitality, storage, offices, pharmacy, medical, and others looking to establish a presence in South Lake County.

ADDRESS

1403 US Highway 27
Clermont, FL 34714

ACREAGE BREAKDOWN

10.19 Acres of Vacant
Commercial Land

PROPERTY HIGHLIGHTS

- Flexible leasing options for businesses looking for a long-term presence in a prime location.
- Situated in an area with a high density of residential homes providing a large customer base for businesses looking to establish a presence in this prime location.
- Surrounded by other commercial businesses, including retail centers, hotels, pharmacies, gas stations, and restaurants.
- High visibility and accessibility to major highways and transportation routes on the busy US-27 and US-192 commercial corridor.
- Close proximity to major tourist attractions and theme parks for potential customer traffic.
- Zoned for commercial use, providing businesses with flexibility to design and construct their ideal commercial space.
- Flat terrain ideal for development with ample space for parking, landscaping, and outdoor areas
- Access to all major utilities

nationalland.com/listing/hightraffic-commercial-ground-lease-on-us27-in-south-lake-county





National Land Realty
 2180 West First St
 Unit 301
 Fort Myers, FL 33901
NationalLand.com

Sean Doyle
 Office: 855-384-5263
 Cell: 407-988-6586
 Fax: 864-331-1610
Sdoyle@nationalland.com

Justus Koester
 Office: 855-384-5263
 Cell: 239-898-0163
 Fax: 239-541-8375
Jkoester@nationalland.com

The above information is from sources deemed reliable, however the accuracy is not guaranteed.
 National Land Realty assumes no liability for error, omissions or investment results.