

CHAMPION COMMONS

5231 PENN AVENUE

28,661 SF
OFFICE SPACE
FOR SUBLEASE

Lee & Associates of Western Pennsylvania LLC

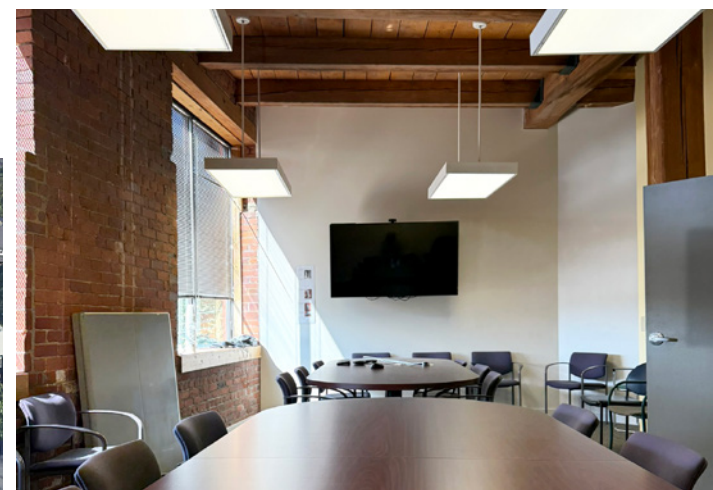
11 Stanwix Street, Suite 2250 | Pittsburgh, PA 15222 | 412.339.2424 | lee-westernpa.com



PROPERTY HIGHLIGHTS

- » Entire building available for sublease; term through 4/30/2027
- » **Typical floor plate: 7,900 SF**
- » Office intensive space, with large meeting rooms and kitchenettes on each floor
- » On-site, free parking and direct access to public transportation
- » Located in Pittsburgh's East End, with proximity to the Children's Home of Pittsburgh, Children's Hospital, and Liberty East

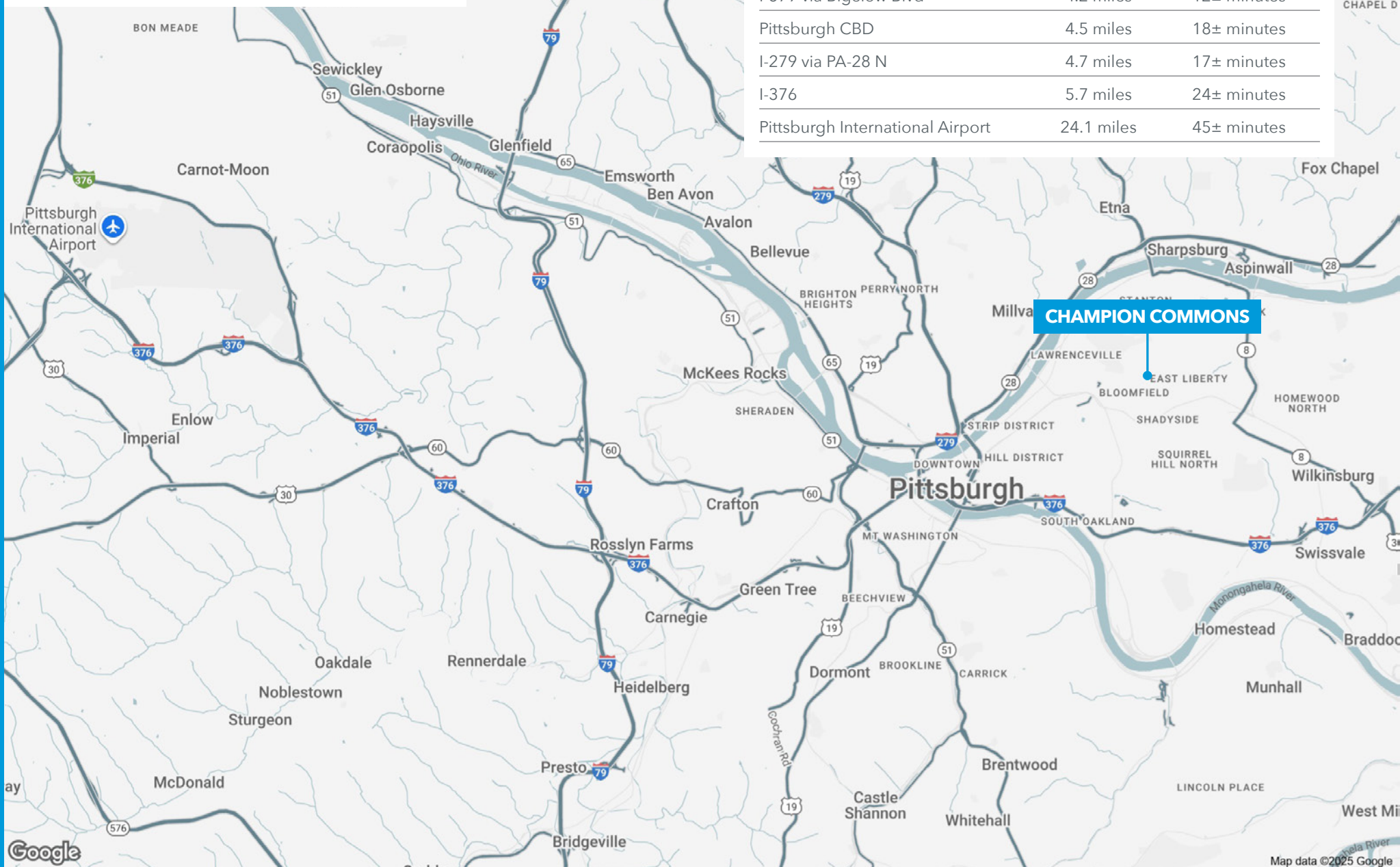
ABUNDANT PARKING



IDEAL LOCATION

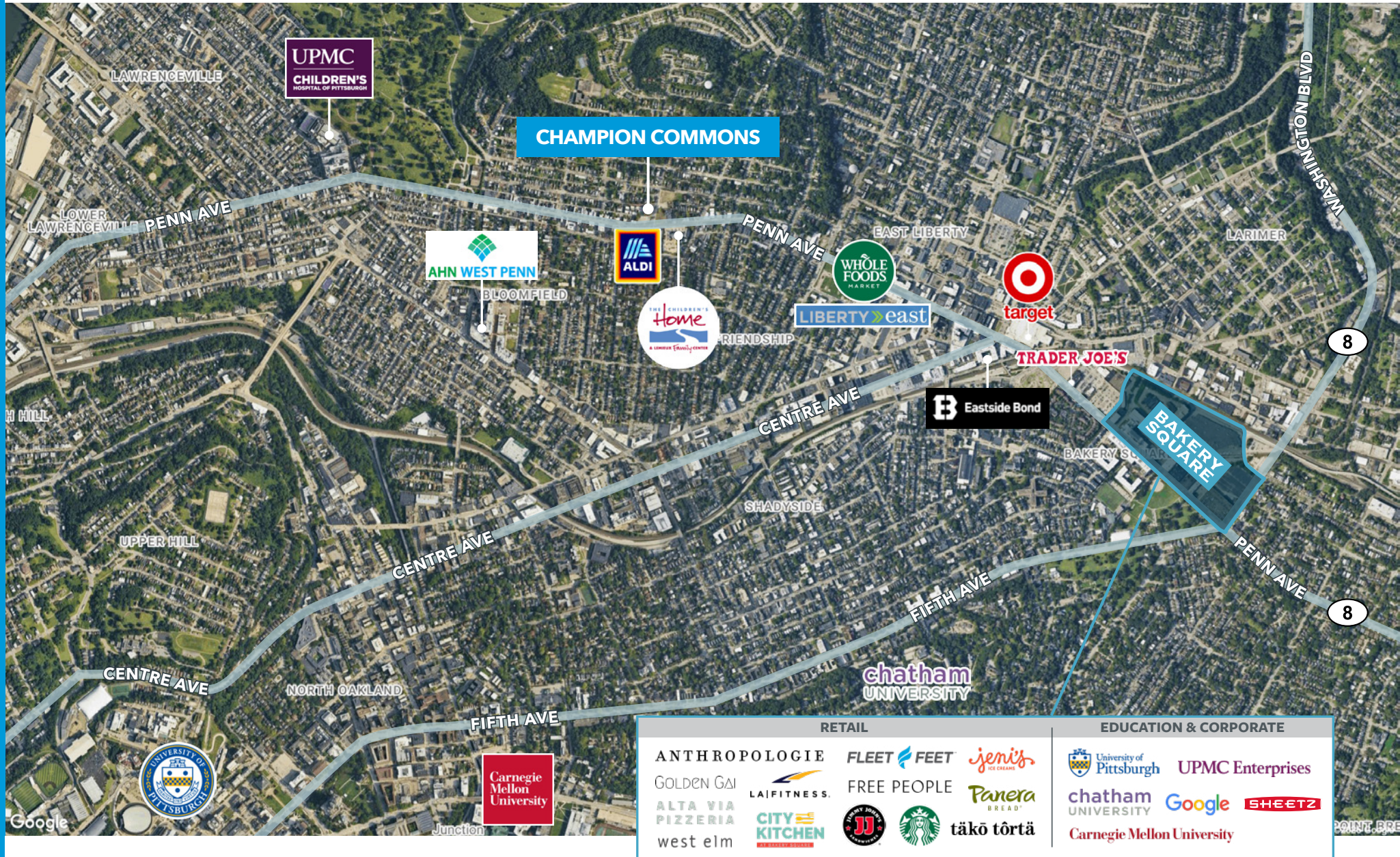
KEY DISTANCES

I-579 via Bigelow Blvd	4.2 miles	12± minutes
Pittsburgh CBD	4.5 miles	18± minutes
I-279 via PA-28 N	4.7 miles	17± minutes
I-376	5.7 miles	24± minutes
Pittsburgh International Airport	24.1 miles	45± minutes



AREA AMENITIES

CHAMPION COMMONS 5231 PENN AVENUE | PITTSBURGH, PA 15206



CHAMPION COMMONS 5231 PENN AVENUE | PITTSBURGH, PA 15206

[illegible]

The floor plan of the 1st floor of the University of Illinois at Chicago is a complex layout with numerous rooms and corridors. The rooms are labeled with their names and numbers, such as OFFICE 101, MEETING ROOM 102, and CONFERENCE 103. The plan also shows a large central area with a staircase and a large open space. The layout is designed to facilitate a variety of activities, from individual work to group meetings and conferences.

CHAMPION COMMONS

5231 PENN AVENUE

AMY BROADHURST, SIOR, CCIM
abroadhurst@lee-associates.com
412.339.1961

CAROLINE MUSE
cmuse@lee-associates.com
412.339.1962

LEE & ASSOCIATES OF WESTERN PENNSYLVANIA LLC

11 Stanwix Street, Suite 2250 | Pittsburgh, PA 15222
412.339.2424 | lee-westernpa.com

All information furnished regarding property for sale, rental or financing is from sources deemed reliable, but no warranty or representation is made to the accuracy thereof and same is submitted to errors, omissions, change of price, rental or other conditions prior to sale, lease or financing or withdrawal without notice. No liability of any kind is to be imposed on the broker herein.