

CrossPoint

Building 2

40,215 SF Available for Sublease

4811 N IH-35
Georgetown, TX 78633

Available Now!



CrossPoint - Building 2

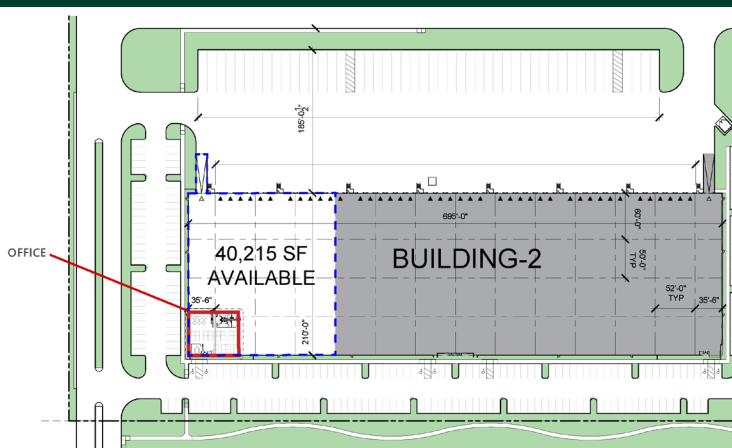
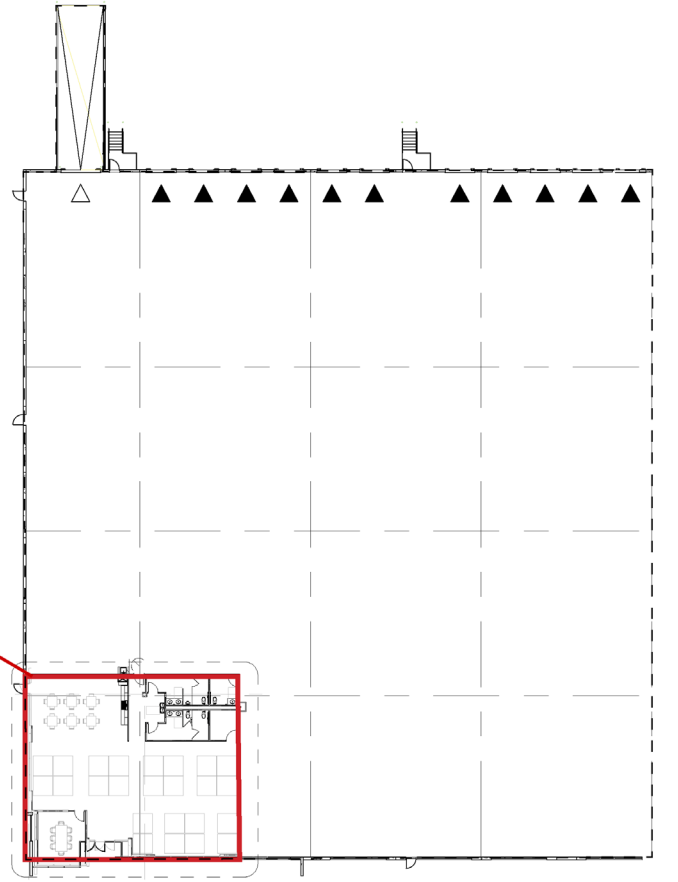
4811 N IH-35 | Georgetown, TX 78633

For Sublease

Building 2 Specs

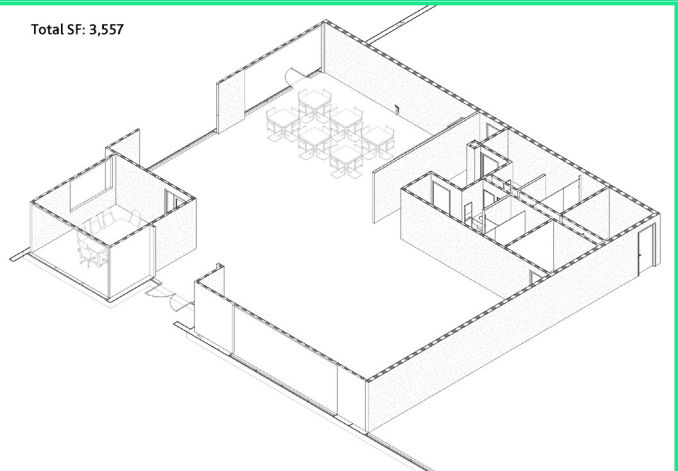
Address	4811 N IH-35 Georgetown, TX
Total Size	145,950 SF
Available Space	40,215 SF
Office Space	3,557 SF
Column Spacing	52' x 50'
Clear Height	32'
Ramps	1
Dock High Doors	11
Building Depth	210'
Truck Court Depth	185'
Sprinklers	ESFR
Trailer Parking	25
Sublease Term	Negotiable

OFFICE



OFFICE

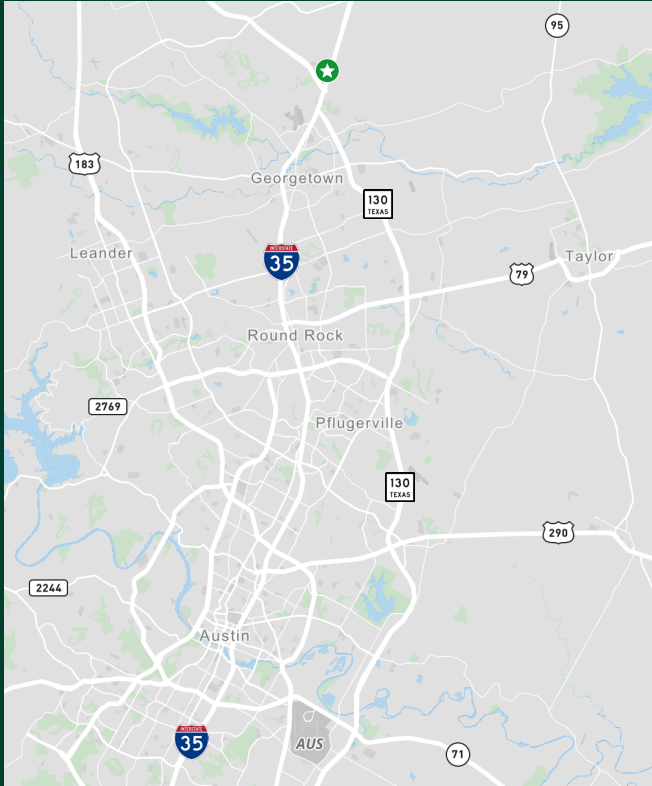
Total SF: 3,557



CrossPoint - Building 2

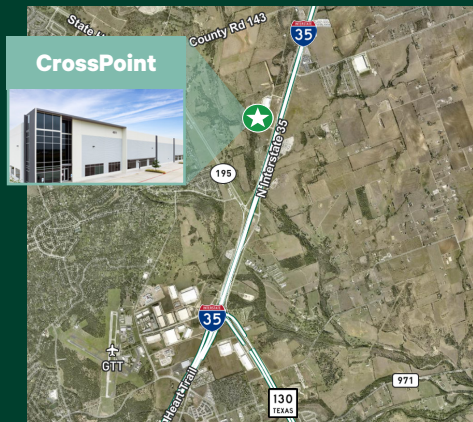
4811 N IH-35 | Georgetown, TX 78633

For Sublease



Key Distances

Georgetown	6.2 mi
Round Rock	15.6 mi
Austin	33.6 mi
San Antonio	112 mi
Dallas	164 mi
Houston	178 mi



Contact Us

Darryl Dadon

Senior Vice President
+1 512 499 4953
darryl.dadon@cbre.com

Olvia Reed

Associate
+1 512 482 5591
olivia.reed@cbre.com

© 2025 CBRE, Inc. All rights reserved. This information has been obtained from sources believed reliable, but has not been verified for accuracy or completeness. You should conduct a careful, independent investigation of the property and verify all information. Any reliance on this information is solely at your own risk. CBRE and the CBRE logo are service marks of CBRE, Inc. All other marks displayed on this document are the property of their respective owners, and the use of such logos does not imply any affiliation with or endorsement of CBRE. Photos herein are the property of their respective owners. Use of these images without the express written consent of the owner is prohibited.

CBRE