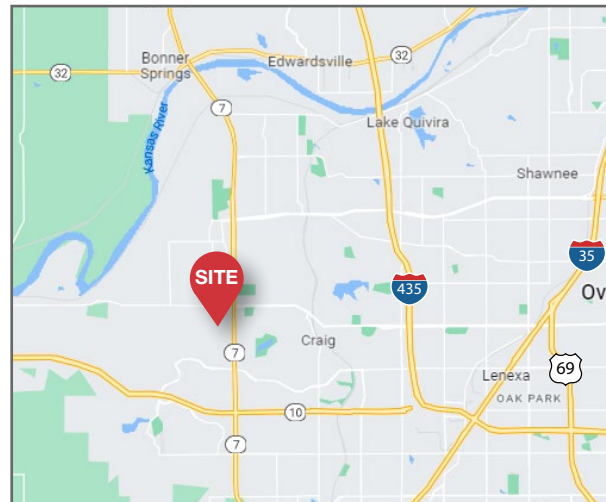




## 23720 W 83rd Terrace Shawnee, Kansas

- ± 3,195 SF Available
- One (1) drive-in door
- Fully air conditioned
- Excellent access to K-7 from 83rd St
- Lease Rate: \$3,714 per month plus CAM

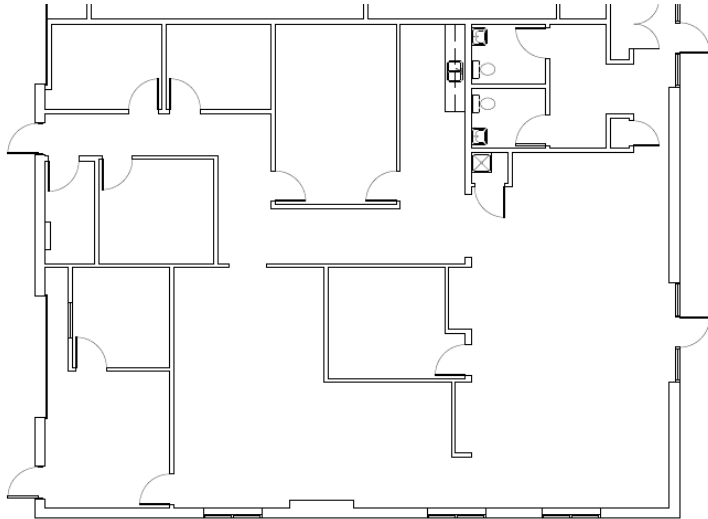


For more information:  
**Nathan Anderson, SIOR, CCIM**  
+1 913 890 2001  
nathan@nai-heartland.com

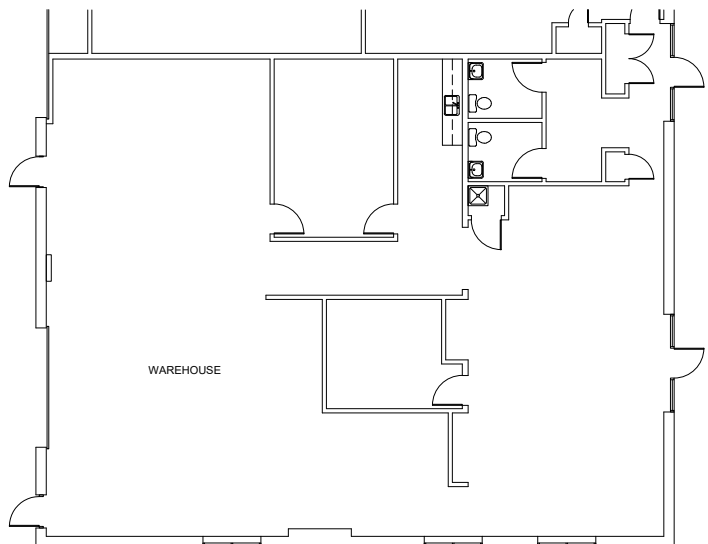
# Available For Lease Office/Warehouse Space



Existing Plan



Alternate Plan



For more information:

**Nathan Anderson, SIOR, CCIM**

+1 913 890 2001 • [nathan@nai-heartland.com](mailto:nathan@nai-heartland.com)

4400 College Boulevard Suite 170  
Overland Park, Kansas 66211  
+1 913 362 1000  
[nai-heartland.com](http://nai-heartland.com)