

902 S Atlantic Ave Ormond Beach, FL 32176

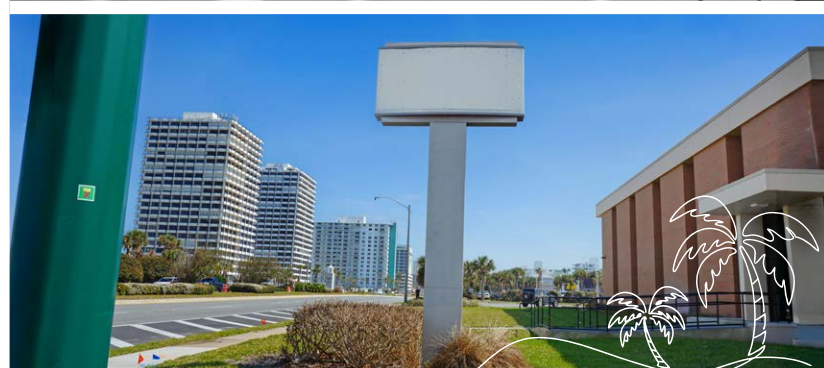
BIDS DUE: 05/13/26



Former Bank Branch

Reuse, Repositioning or Redevelopment Opportunity

- Approximately 8,581 s.f. across two buildings and 2.20 a.c.
- **Building A:** 8,418 SF, 2-story brick & stucco building with a building height of 25.0'
- **Building B:** 163 SF, 1-story stucco building with a building height of 9.3'
- 60 total parking spaces and 4 drive-thru lanes
- Sits at the signalized, lighted intersection of A1A (S Atlantic Ave) and Harvard Dr on its SEC
- Excellent entry/exit accessibility and signage visibility along both thoroughfares
- Adjacent to Planet Fitness and the 20.75 a.c. Seabreeze High School (1,569 students)
- A1A serves as the Florida Atlantic Coast's retail corridor and gateway to affluent residences
- Located only blocks from Daytona Beach, allowing the subject site to serve both beach communities and their seasonal visitors
- Appealing coastal location: Volusia County sees 10.14M tourists annually, attracting the key demographic of couples and families ages 30-50 with young children



Contact



Billy Rodriguez

Senior Vice President

billy.rodriquez@jll.com

+1 407 443 3925



For details on this property and others available nationwide,
please visit: www.BankingCentersForSale.com



Demographics

POPULATION

- 5 MIN. 7,556
- 10 MIN. 25,551
- 15 MIN. 87,496

HOUSEHOLDS

- 5 MIN. 4,062
- 10 MIN. 13,336
- 15 MIN. 40,755

MEDIAN AGE

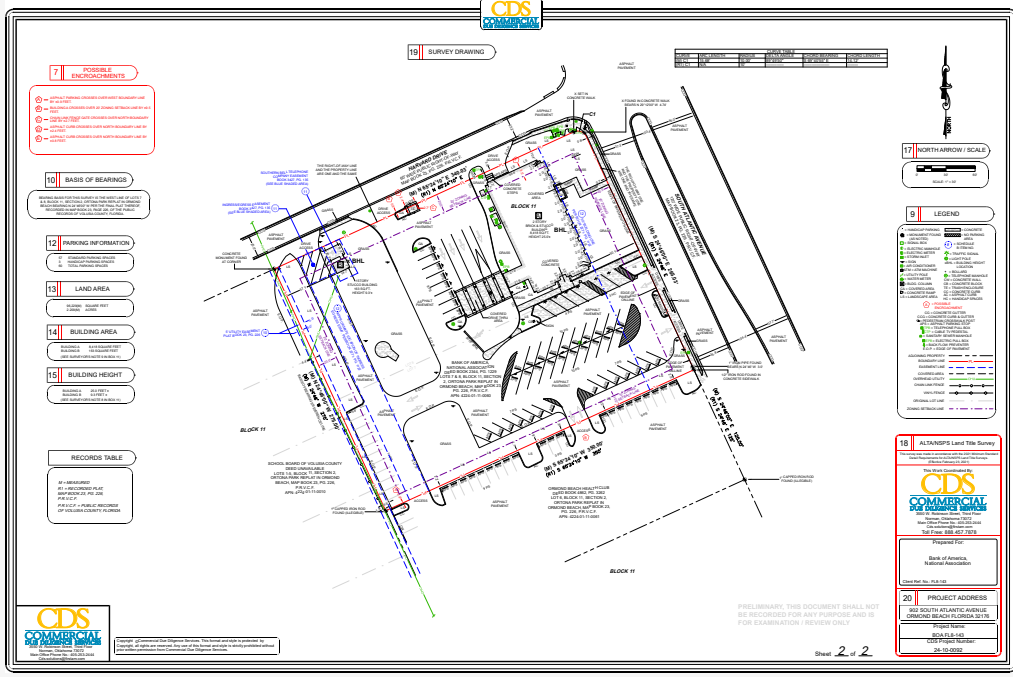
- 5 MIN. 58.6
- 10 MIN. 55.2
- 15 MIN. 51.6

MEDIAN INCOME

- 5 MIN. \$62,077
- 10 MIN. \$56,976
- 15 MIN. \$54,965

- Subject**
- Hotels
 - Condos & condo towers
 - Shopping centers
 - Educational institutions

Site Survey



Aerial Overview

