

Office



# Kendall I Plaza

## FOR LEASE

8603 South Dixie Highway | Miami, FL 33143

Space Available: 900 RSF up to 1,773 RSF

Lease Rate & Type: \$38.00 PSF, Full Service

For More Information

John Erixon

+1 786 533 1241

[jerixon@naimiami.com](mailto:jerixon@naimiami.com)

For more listings visit: [naimia-ftl.com/properties](http://naimia-ftl.com/properties)

**NAI** Miami  
Fort Lauderdale



# Kendall I Plaza

8603 South Dixie Highway | Miami, FL 33143



## Property Features

- Ample free tenant and visitor parking
- Flexible lease terms
- On-site professional maintenance and security
- Luxurious marble lobby entrance
- Regions Bank and FedEx Office located on ground floor

## Location Features

- Strategically located on South Dixie Highway (US 1) between the North and South Dadeland Metrorail Stations
- Easy access to the Palmetto Expressway (SR-826) and Snapper Creek Expressway (SR-874) via Kendall Drive

## Availabilities

### Second Floor

Suite 207	900 RSF	Available Now
Suite 218	1,773 RSF	Available Now

### Fourth Floor

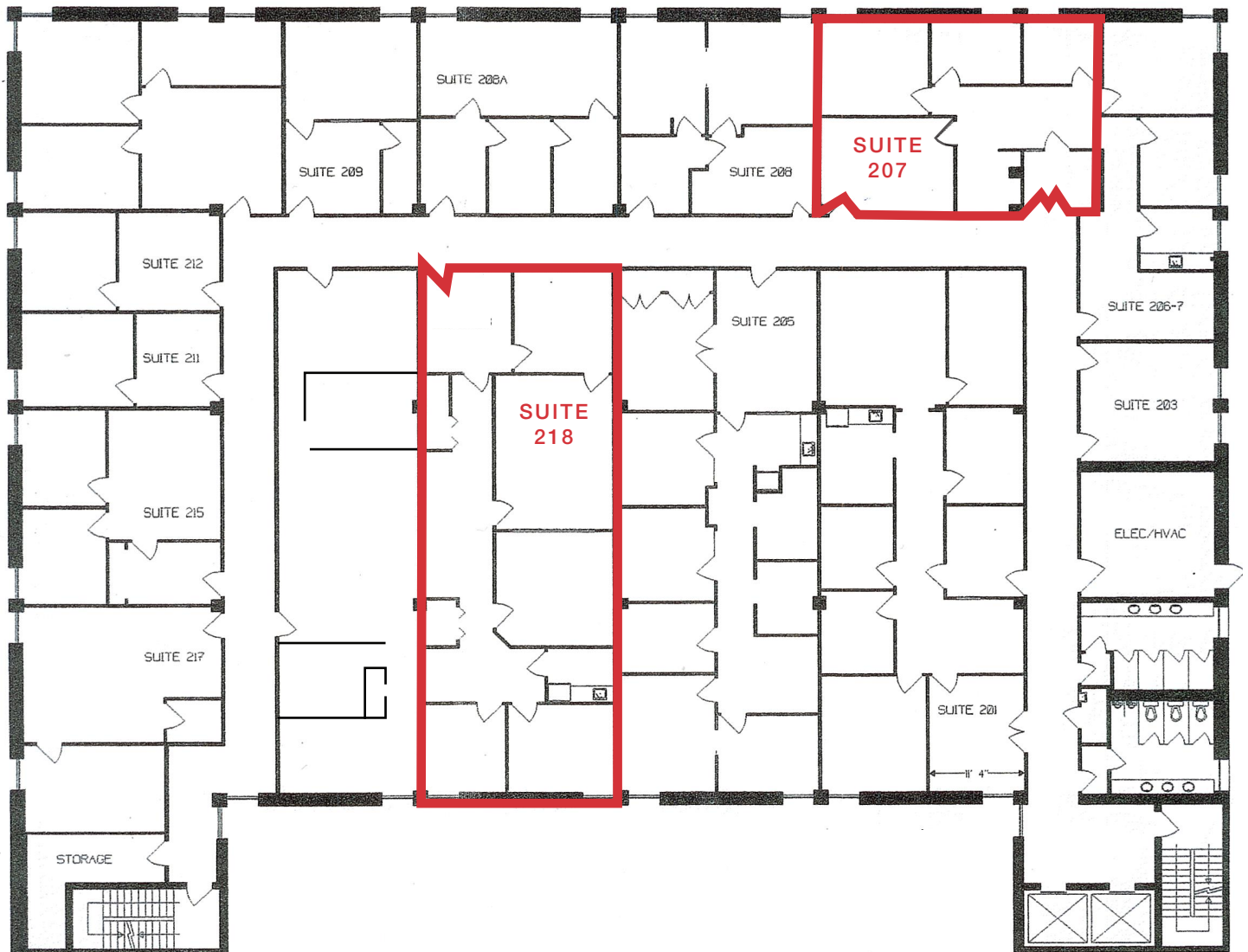
Suite 404	1,200 RSF	Available Now
-----------	-----------	---------------

# Floor Plan - Second Floor

8603 South Dixie Highway | Miami, FL 33143

Suite 207 - 900 RSF

Suite 218 - 1,773 RSF

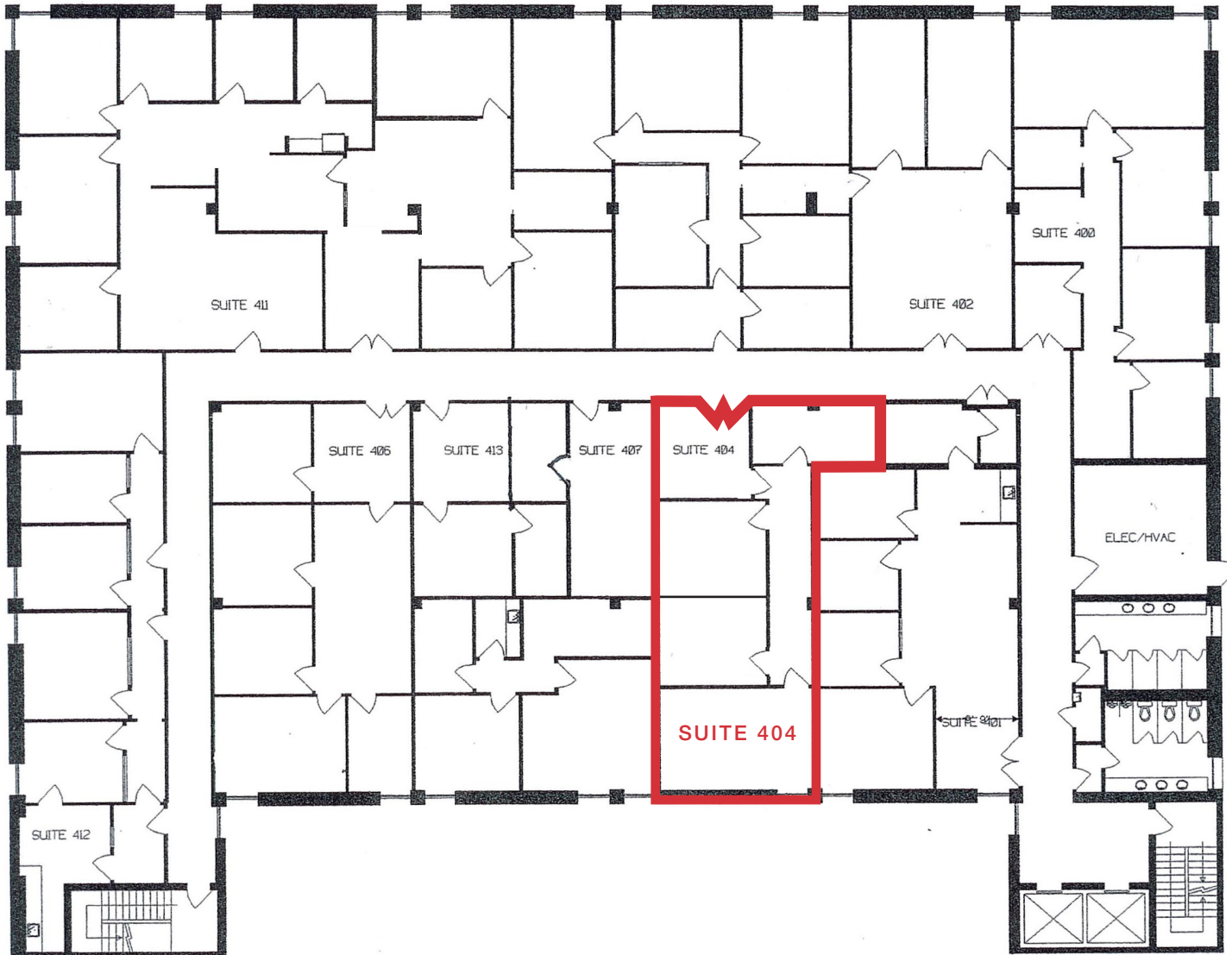


---

# Floor Plan - Fourth Floor

8603 South Dixie Highway | Miami, FL 33143

Suite 404 - 1,200 RSF



---

## For More Information

John Erixon

+1 786 533 1241

jerixon@naimiami.com



📍 9655 South Dixie Highway, Suite 300, Miami, FL 33156

📞 +1 305 938 4000

🌐 naimia-ftl.com

NO WARRANTY OR REPRESENTATION, EXPRESS OR IMPLIED, IS MADE AS TO THE ACCURACY OF THE INFORMATION CONTAINED HEREIN, AND THE SAME IS SUBMITTED SUBJECT TO ERRORS, OMISSIONS, CHANGE OF PRICE, RENTAL OR OTHER CONDITIONS, PRIOR SALE, LEASE OR FINANCING, OR WITHDRAWAL WITHOUT NOTICE, AND OF ANY SPECIAL LISTING CONDITIONS IMPOSED BY OUR PRINCIPALS NO WARRANTIES OR REPRESENTATIONS ARE MADE AS TO THE CONDITION OF THE PROPERTY OR ANY HAZARDS CONTAINED THEREIN ARE ANY TO BE IMPLIED.