

5703 OBERLIN DRIVE, SAN DIEGO, CA 92121

±5,000 SF OFFICE SPACE FOR SUBLEASE



MILES ARNOLD

Senior Associate

858.458.3324 | Lic. #02094013

marnold@voitco.com

CHRIS DURBIN

Associate

858.458.3339 | Lic. #02227661

cdurbin@voitco.com

Voit

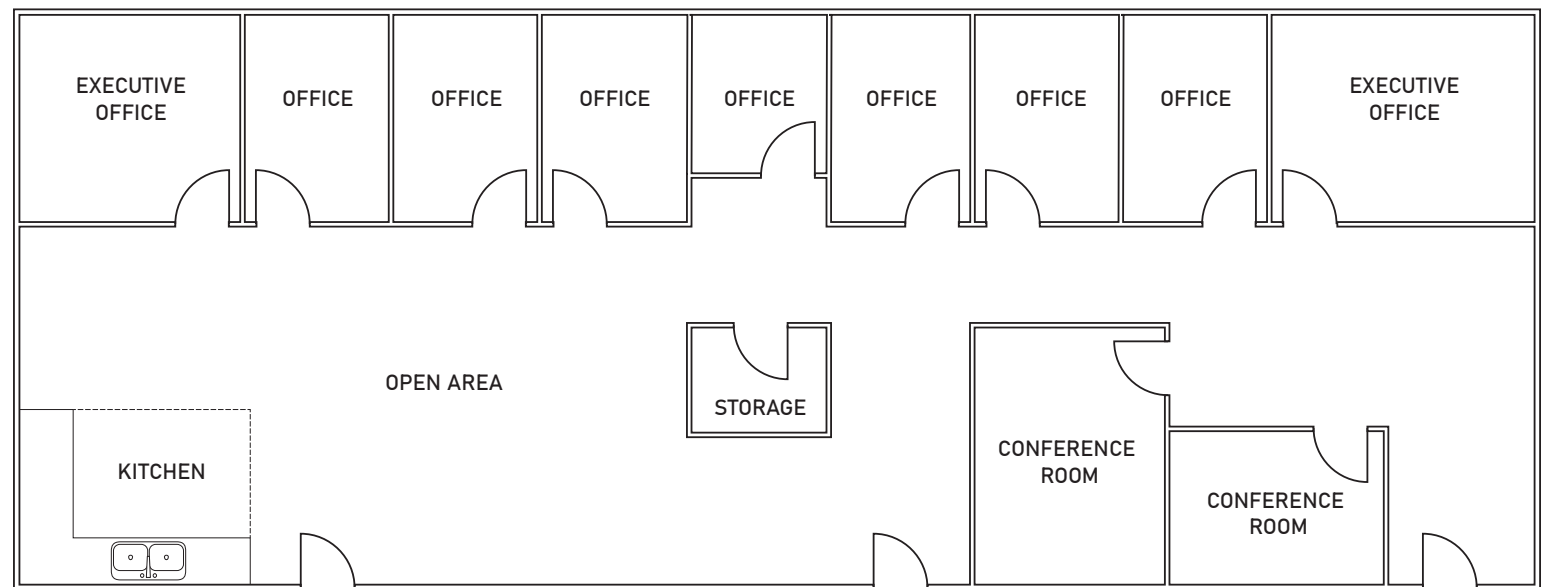
REAL ESTATE SERVICES

FLOOR PLAN



SUITE: 306-308

SIZE: ±5,000 SF



SUBLEASE RATE: \$1.25/SF/MO FS

EXPIRATION: DECEMBER, 30 2028

BUILDING SPECIFICATIONS



Office
Building Type



±40,000 Square Feet
Total Building Size



±5,000 Square Feet
Available Suite Size



Multiple
Tenancy



1.67 Acres
Lot Size



Three (3)
of Stories



3.0/1,000 Square Feet
Parking Ratio



M-1B
Zoning

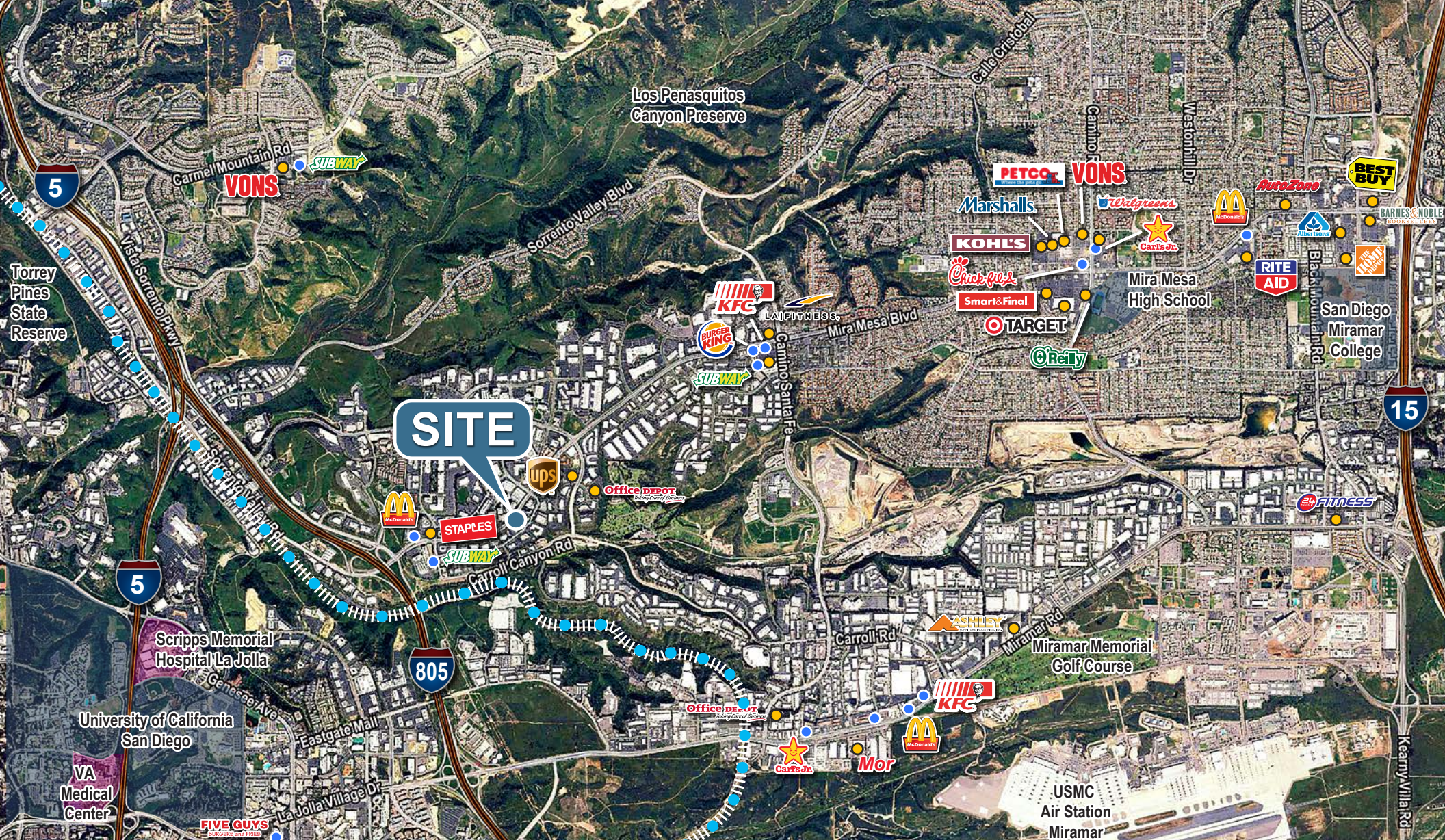


1985
Year Built



PROPERTY HIGHLIGHTS

- » Central Sorrento Mesa Location
- » Close Proximity to I-805, I-5, & I-15
- » Fiber Available
- » Abundant Natural Light Throughout
- » Lush Landscape with panoramic Views
- » Responsive and Local Entrepreneurial Ownership and Management



MILES ARNOLD

Senior Associate

858.458.3324 | Lic. #02094013

marnold@voitco.com

CHRIS DURBIN

Associate

858.458.3339 | Lic. #02227661

cdurbin@voitco.com

Voit

REAL ESTATE SERVICES

4180 La Jolla Village Drive, Suite 100, La Jolla, CA 92037 • 858.453.0505 • 858.408.3976 F • Lic #01991785 • www.voitco.com

Licensed as Real Estate Salespersons by the DRE. The information contained herein has been obtained from sources we deem reliable. While we have no reason to doubt its accuracy, we do not guarantee it.
©2025 Voit Real Estate Services, Inc. All Rights Reserved.