

**FOR LEASE**

**4085 Nelson Avenue, Suite I**  
Available Now | Concord | CA 94502

**±4,633 SF**



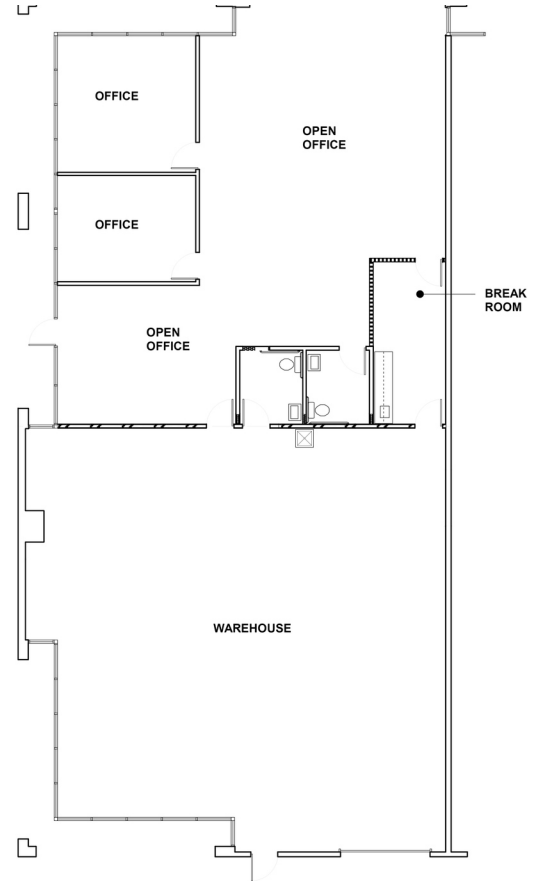
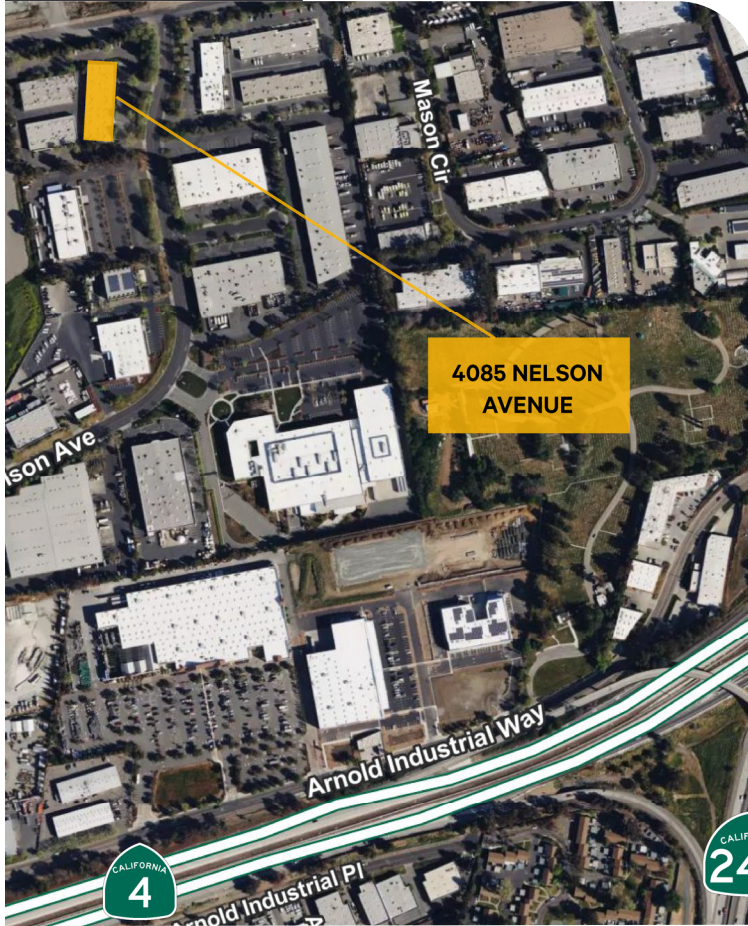
**CONTACT US**

**Tony Binswanger, SIOR**  
**Bo Harkins**

+1 925 296 7728 | [tony.binswanger@cbre.com](mailto:tony.binswanger@cbre.com)  
+1 925 296 7727 | [bo.harkins@cbre.com](mailto:bo.harkins@cbre.com)

**CBRE**

## MAP



## PROPERTY HIGHLIGHTS

- ±50% Office Build-out
- Two (2) private Offices
- Reception
- Bullpen Area
- Breakroom
- Two (2) Restrooms
- ±16' Clear Height
- One (1) Grade level door
- Close proximity to Hwy 4 & 680
- Call brokers for pricing

## CONTACT:

Tony Binswanger, SIOR  
Executive Vice President  
+1 925 296 7728  
tony.binswanger@cbre.com  
Lic. 01861701

Bo Harkins  
First Vice President  
+1 925 296 7727  
bo.harkins@cbre.com  
Lic. 01943785

CBRE, Inc  
2175 N California Blvd  
Suite 300  
Walnut Creek, CA 94596  
www.cbre.com/walnutcreek  
Lic. 00409987