

PACIFIC PARK PLAZA

27101 - 27141 ALISO CREEK RD
ALISO VIEJO, CA 92656

**OFFICE,
RETAIL, &
INDUSTRIAL
UNITS**

Pacific Park Plaza

For More Information Contact:

Angela Draper

Leasing Manager

ADraper@essexrealty.com

ph: 949.798.8100

www.essexrealty.com

License #01972882

ESSEX | REALTY
MANAGEMENT, INC.

PACIFIC PARK PLAZA

AVAILABILITIES:

Office:

27141- 210: 927sf (2 offices, reception) - \$2.45 FSG

27141- 215: 897sf (2 offices, reception) - \$2.45 FSG

27141-225: 2,893sf (Reception, break area, 6 offices) - \$2.45 FSG

27141-240: 649sf (2 offices, reception) - \$2.45 FSG

27141-265: 1,902sf (4 offices, open area, wetbar) - \$2.45 FSG

27141- 270: 2,409sf (6 offices, wetbar, conference room) - \$2.45 FSG

Industrial:

27101-128: 1,609sf (warehouse, roll up door, 1 office, AC throughout) \$1.85

NNN - Available 3/1/26

27101-146: 1,906sf (warehouse, 2 roll up doors, restroom) \$1.85 NNN -

Available 4/1/26

Retail:

27131-140: 2,534sf (large open space with private office, 2 restrooms, and storage area) \$2.45 NNN Available 4/1/26

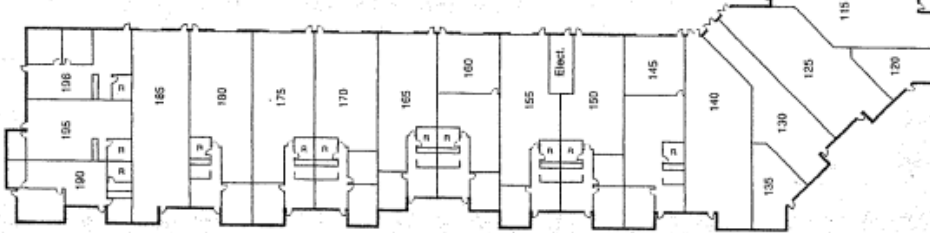
Features:

- Beautiful park-like setting
- Easy access to 73 Toll Road
- Walking distance to shops, restaurants, and other amenities.
- Professionally managed
- Onsite management/leasing office

PACIFIC PARK PLAZA



27101 Aliso Creek Road



27111 Aliso Creek Road



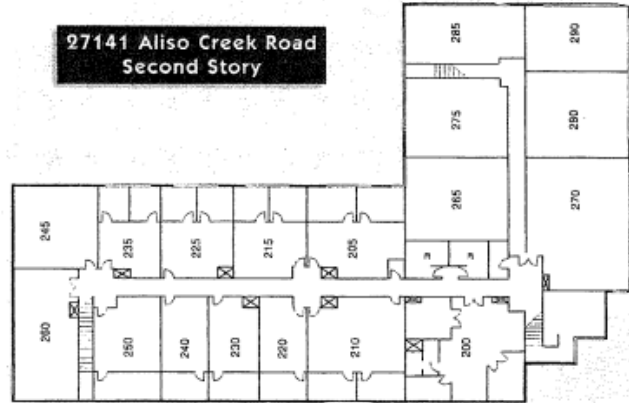
27121 Aliso Creek Road



27131 Aliso Creek Road



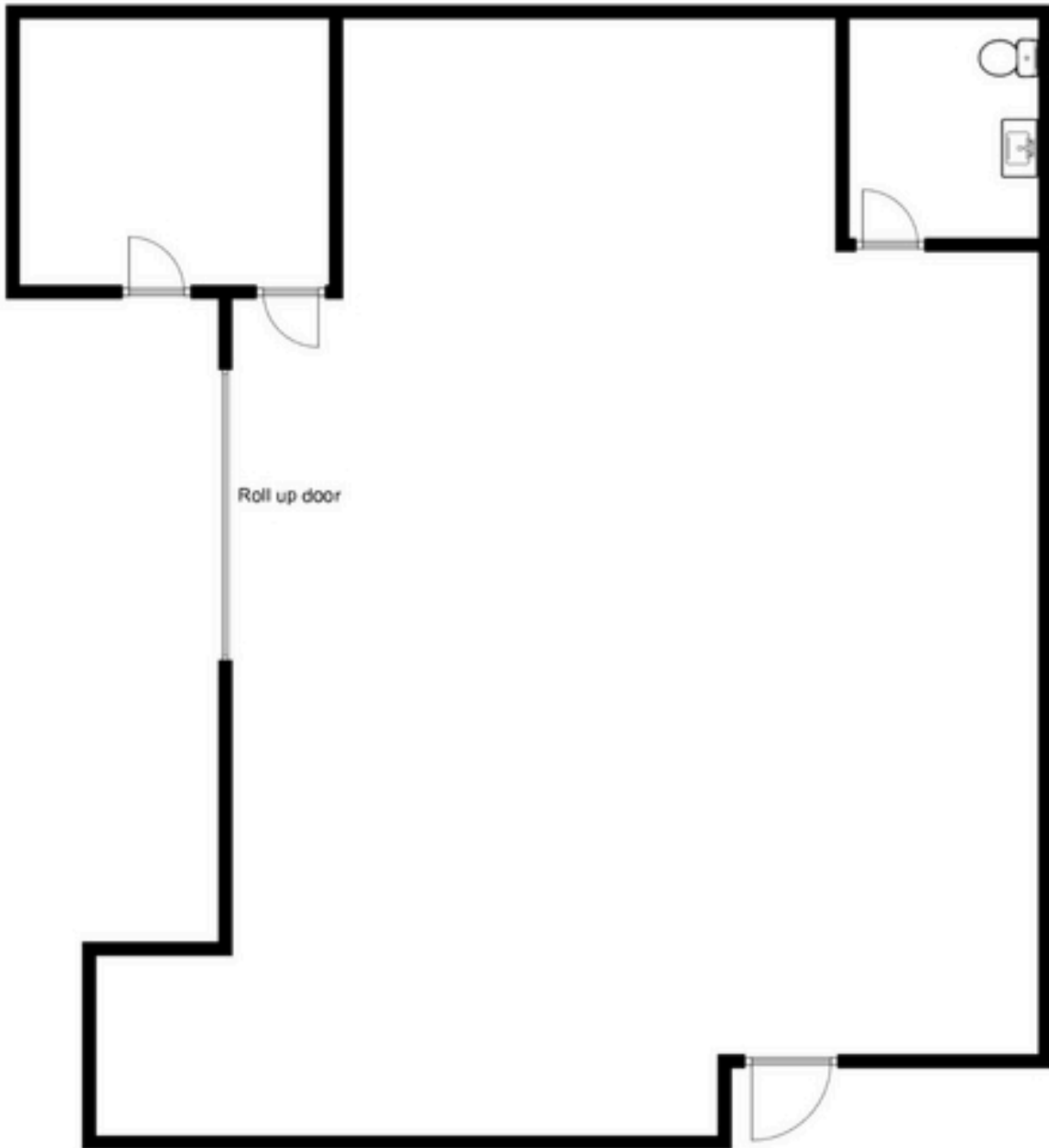
27141 Aliso Creek Road



**27141 Aliso Creek Road
Second Story**

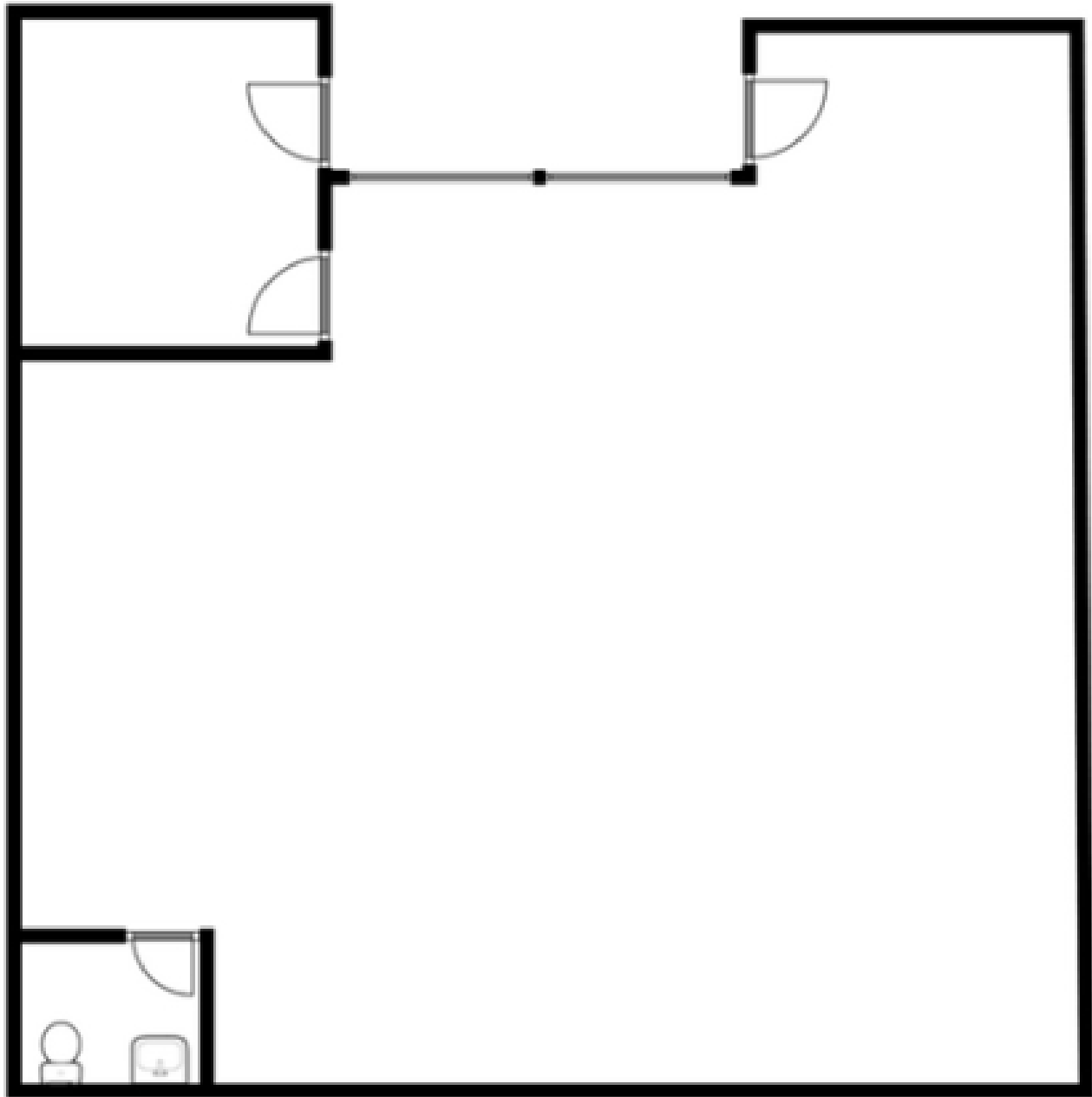
PACIFIC PARK PLAZA

27101-128
1,609 Sq. Ft.



PACIFIC PARK PLAZA

27101-146
1,906 Sq. Ft.



PACIFIC PARK PLAZA

27131-140
2,534 Sq. Ft.

