

**FLEX
SPACE**



FOR LEASE

190 RIVERSIDE STREET, UNIT 4A
PORTLAND, ME 04103

- 2,400± SF flex unit available, including a 10'x12' OHD, in a professionally managed and beautifully maintained office building
- Located immediately off of Maine Turnpike Exit 48, with signage on Riverside Street
- The property features ample on-site parking, excellent visibility and a tenant mix of many professional office users
- \$14.00/SF NNN



FOR LEASE

190 RIVERSIDE STREET, UNIT 4A
PORTLAND, ME 04103



PROPERTY DETAILS

OWNER OF RECORD	Bounty Development, LLC
BUILDING SIZE	45,421± SF
AVAILABLE SPACE	Suite 4A: 2,400± SF
LOT SIZE	7.2± Acres (per assessor)
ASSESSOR'S REFERENCE	267-A-5
YEAR BUILT	1988
CONSTRUCTION	Block brick
OVERHEAD DOOR	One (1), 10'x12'
LOCATION	Less than 1 mile from Turnpike Exit 48
TRAFFIC COUNTS	29,160 AADT (2022)
PARKING	168± on-site paved parking spaces in common with other tenants
ZONING	B-4 Commercial
HVAC	Central HVAC
BUILDING TENANTS	Evergreen Home, H&R Block, Body by John, Correct Transport, Lindenmyer Munroe, Regional Home Care, Transcore, Trident Fly Fishing, Elite Cameron, Mr. Handyman of Greater Portland, LearningWorks and Connected Office Technology
LEASE RATE	Suite 4A: \$14.00/SF NNN
REAL ESTATE TAXES	\$1.63/SF (Est.)
NNN EXPENSES	\$3.26/SF (Est.)

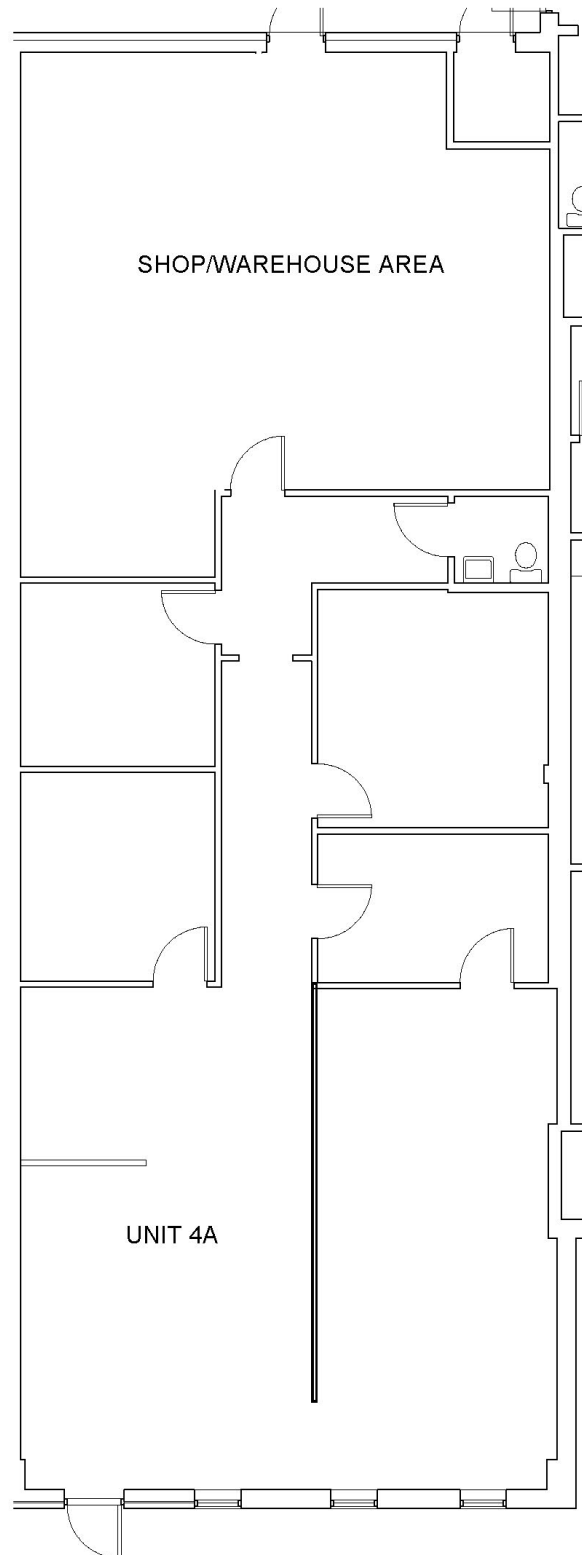


FOR LEASE

190 RIVERSIDE STREET, UNIT 4A
PORTLAND, ME 04103



FLOOR PLAN



FOR LEASE

190 RIVERSIDE STREET, UNIT 4A
PORTLAND, ME 04103



CONTACT US



SAMANTHA MARINKO
Associate

+1 207.553.1723 D
+1 908.433.5049 C
smarinko@boulos.com



GREG BOULOS
Managing Partner

+1 207.553.1715 D
+1 207.831.3000 C
gboulos@boulos.com

©2024 The Boulos Company, Inc. All rights reserved. This information has been obtained from sources believed reliable but has not been verified for accuracy or completeness. You should conduct a careful, independent investigation of the property and verify all information. Any reliance on this information is solely at your own risk. The Boulos Company and The Boulos Company logo are service marks of The Boulos Company, Inc. All other marks displayed on this document are the property of their respective owners. Photos herein are the property of their respective owners. Use of these images without the express written consent of the owner is prohibited.