



Kelly Klingler

925-550-9540

kellyk@wellsandbennett.com

Wells and Bennett

1451 Leimert Blvd

Oakland, California 94602

BRE# 01052191

**WELLS & BENNETT**

REAL ESTATE EXPERTISE SINCE 1924

## 2330 Country Hills Drive Antioch, California 94509



### 4,800 SF, \$2.00 PSF, NNN

- Freestanding building in Professional Business Park.
- Park tenants are primarily health & wellness.
- Ample parking.
- Extensive glass line.
- Convenient to restaurants & retail amenities.
- Near Kaiser & Sutter Hospitals.
- Conveniently located minutes from Hwy 4.
- Shell space with 2 window offices and 5 restrooms.
- Prefer to lease all 4,800 SF to single tenant. Will consider demising to smaller space and leasing to multi-tenants.

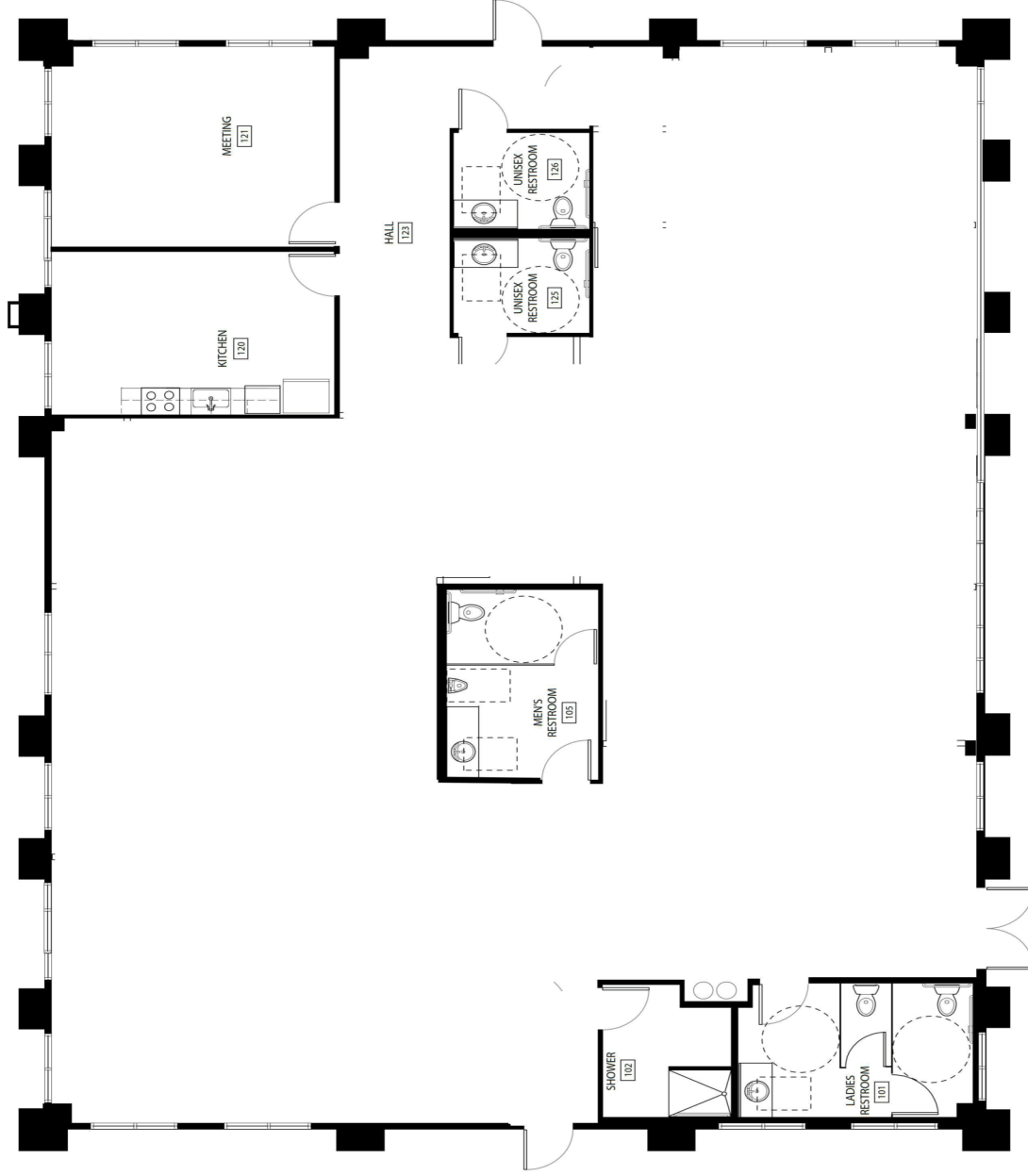


For more details- [www.2330countryhillsdrive.com](http://www.2330countryhillsdrive.com)



2330 Country Hills Drive, Antioch, CA

DRAWING TITLE  
FLOOR PLAN



1 FLOOR PLAN - NEW

1/4"=1'-0"