



FREESTANDING RETAIL/RESTAURANT SPACE

837 EAST 2100 SOUTH, SALT LAKE CITY, UT

LEASE RATE: \$28.00 PSF NNN



PROPERTY INFORMATION

- ✓ Lease rate: \$28 PSF NNN
- ✓ Sales Price: Contact Agent for Pricing
- ✓ Building Size: 4,446 SF Total
 - Main Floor: 3,173 SF
 - Second Floor: 1,273 SF
 - Approx. 1,400 SF Patio Space Along 2100 S.
- ✓ Land Size: 0.24 Acres
- ✓ Grey Shell Condition
- ✓ Year Built: 1960
- ✓ Walk-In Cooler
- ✓ Walk-In Freezer
- ✓ Full Kitchen
- ✓ Hood In Place
- ✓ Zoning: Commercial
- ✓ 12 Surface Parking Spaces
- ✓ Easy Access To I-15



CONTACT US

JUSTIN WELCH

✉ justin@cresutah.com

PRINCIPAL BROKER

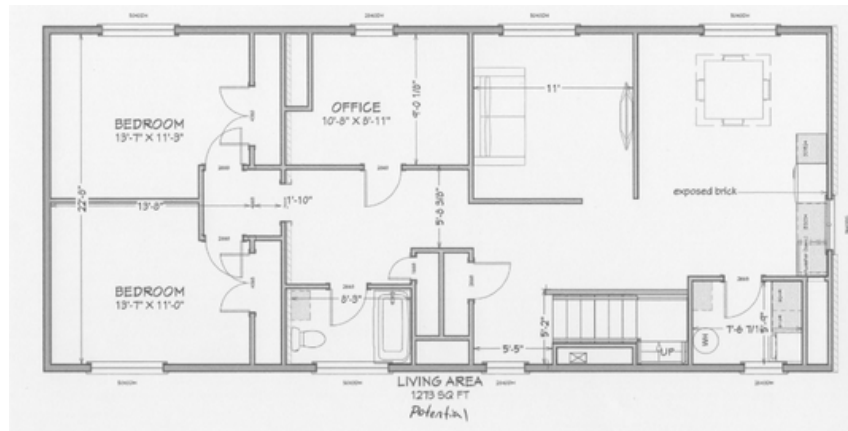
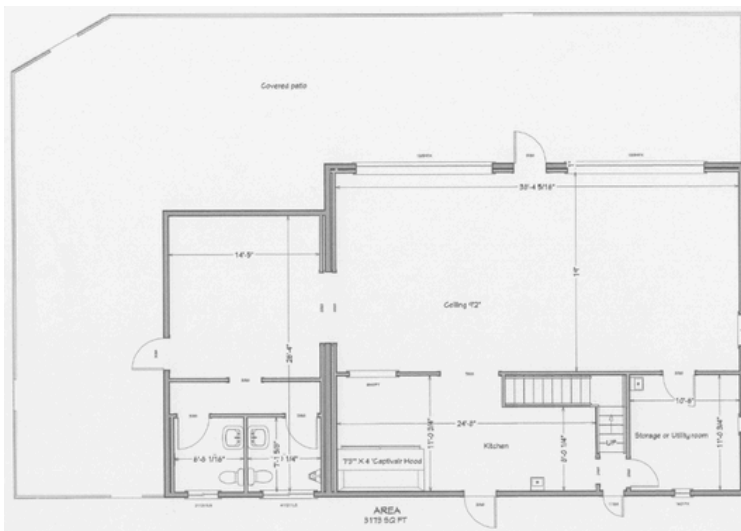
☎ 801.718.8842 🌐 www.cresutah.com

Call Us 
801.876.6070



FREESTANDING RETAIL/RESTAURANT SPACE

837 EAST 2100 SOUTH, SALT LAKE CITY, UT



This information is given with the understanding that all negotiations and/or real estate activity related to the property described above shall be conducted through this CRES office. The above information while not guaranteed, was obtained from sources we believe to be reliable.

CONTACT US

JUSTIN WELCH

PRINCIPAL BROKER

✉ justin@cresutah.com

☎ 801.718.8842

🌐 www.cresutah.com

Call Us
801.876.6070 📞