



2620 S. Decker Lake Blvd.

WEST VALLEY CITY, UT 84119

For Lease 32,956 SF

Property Highlights

- 32,956 SF available
- 2,490 Spec Office SF
- 30,466 Warehouse SF
- ESFR fire sprinklered
- One (1) ground level door (14'x14')
- Metal halide lighting
- Clear height: 35'
- Column spacing: 40'x42'
- Gas forced air
- Up to 800 amps / 480 /277 / 3 phase power supply
- Easy access to Bangerter Highway and Highway 201

For information, please contact:

Lucas M. Burbank

Executive Managing Director

t 801-578-5522

lburbank@newmarkmw.com

Kelsie Akiyama

Senior Associate

t 801-578-5504

kakiyama@newmarkmw.com

Robert Kingsford, CCIM, SIOB

Managing Director

t 801-895-3040

rkingsford@newmarkmw.com

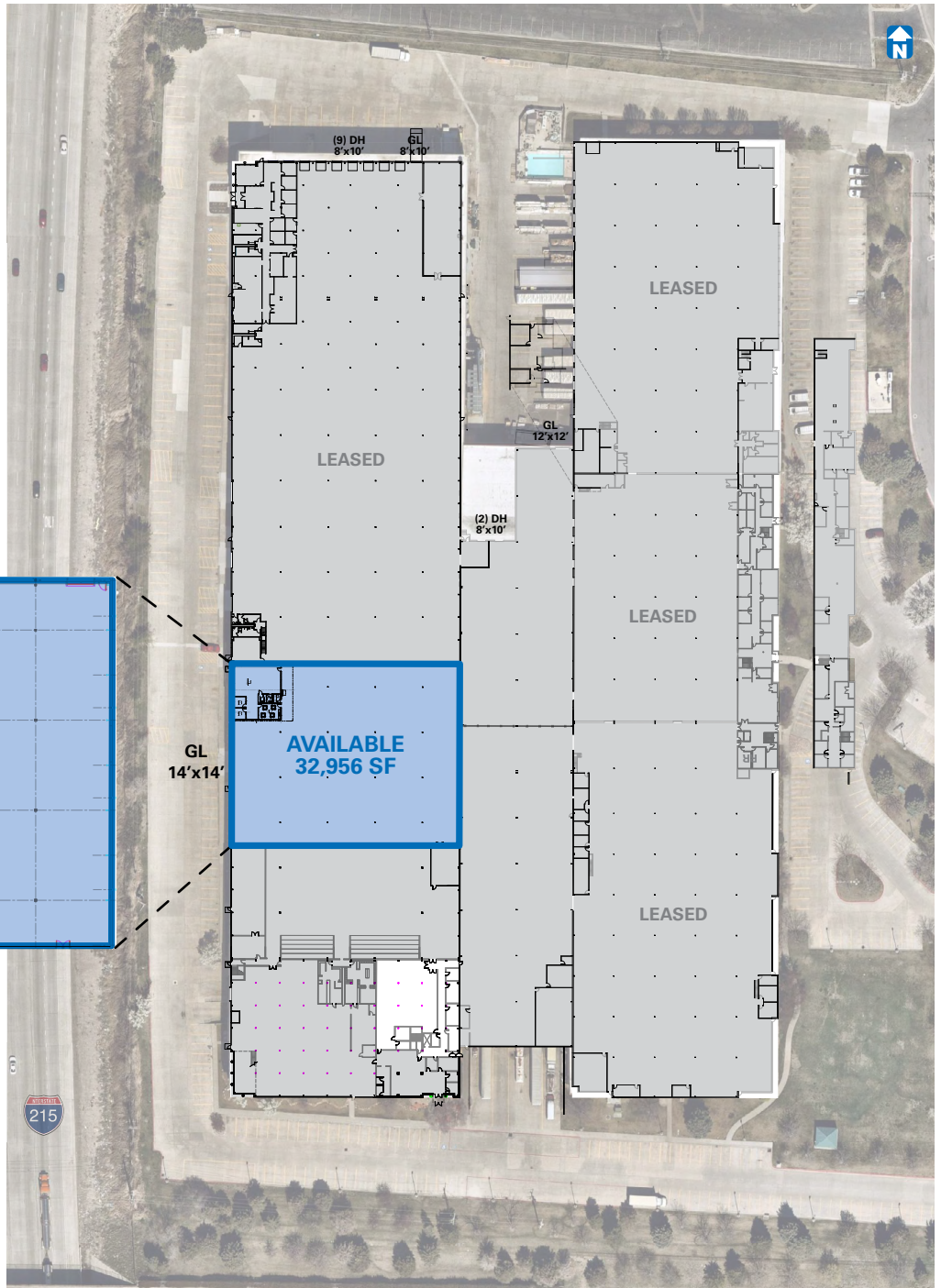
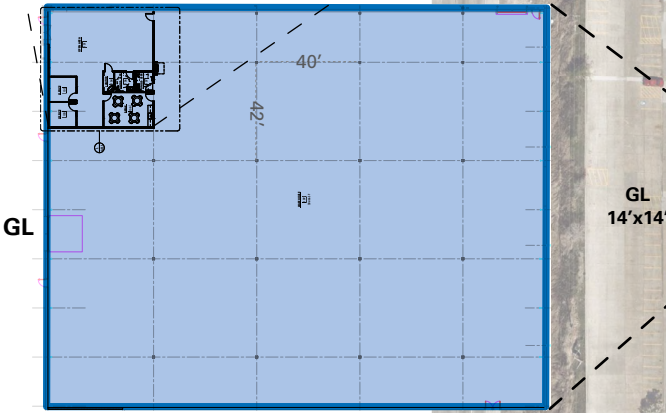
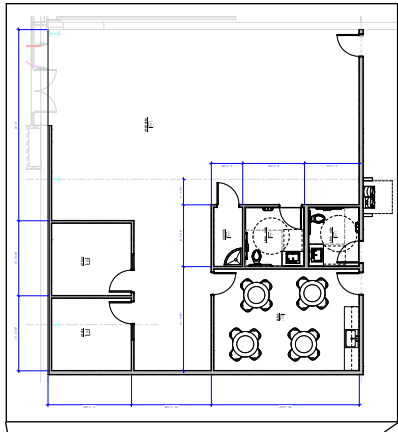
376 E. 400 S.

Suite 120

Salt Lake City, UT 84111



The information contained herein has been obtained from sources deemed reliable but has not been verified and no guarantee, warranty or representation, either express or implied, is made with respect to such information. Terms of sale or lease and availability are subject to change or withdrawal without notice.



For information, please contact:

Lucas M. Burbank
 Executive Managing Director
 t 801-578-5522
 lburbank@newmarkmw.com

Kelsie Akiyama
 Senior Associate
 t 801-578-5504
 kakiyama@newmarkmw.com

Robert Kingsford, CCIM, SIOR
 Managing Director
 t 801-895-3040
 rkingsford@newmarkmw.com

376 E. 400 S.
 Suite 120
 Salt Lake City, UT 84111



The information contained herein has been obtained from sources deemed reliable but has not been verified and no guarantee, warranty or representation, either express or implied, is made with respect to such information. Terms of sale or lease and availability are subject to change or withdrawal without notice.

