

**CBRE**



# 535 N BRAND BLVD

Glendale, CA 91203

**GROUND FLOOR**

**FOR LEASE**



# PROPERTY HIGHLIGHTS

- + ±15,661 RSF Available  
(±12,237 RSF, Ground Floor &  
±3,424 RSF, Mezzanine)
- + Existing bank branch with  
improvements
- + Ground floor retail at a  
signalized corner location
- + 58,300 average daily traffic
- + Direct access to back of  
premises from rear parking  
garage
- + High profile building signage
- + Abundant parking in adjacent  
garage

**CBRE**

Ground Floor | For Lease

535 N Brand Blvd, Glendale, CA 91203

Ground Floor | For Lease  
535 N Brand Blvd, Glendale, CA 91203

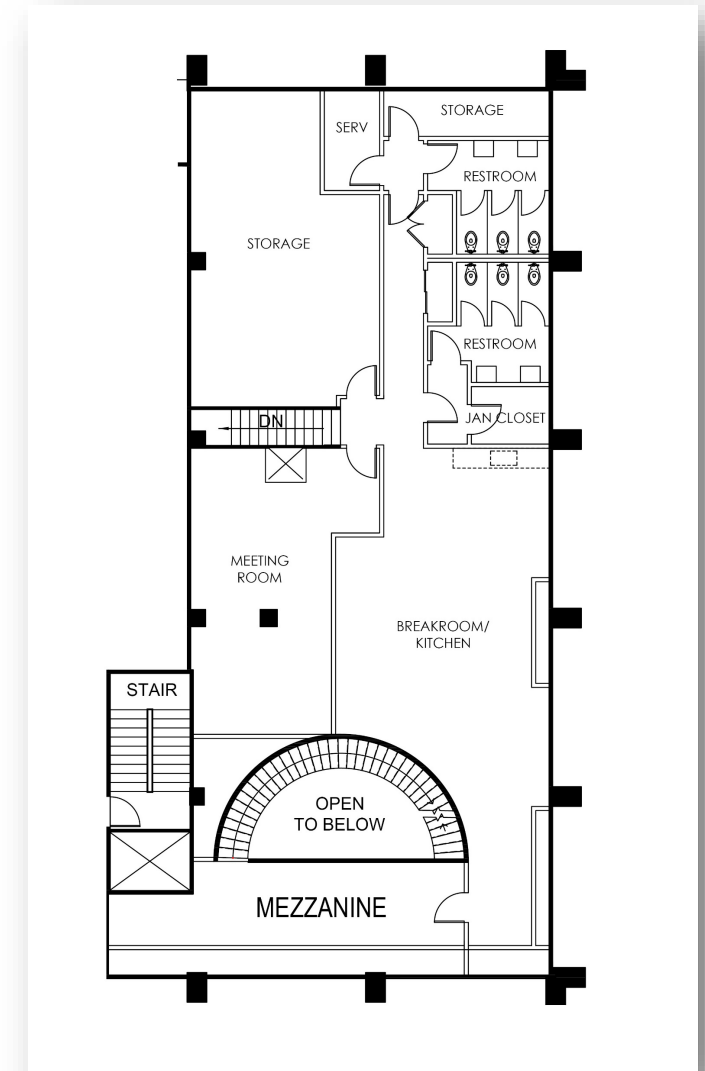
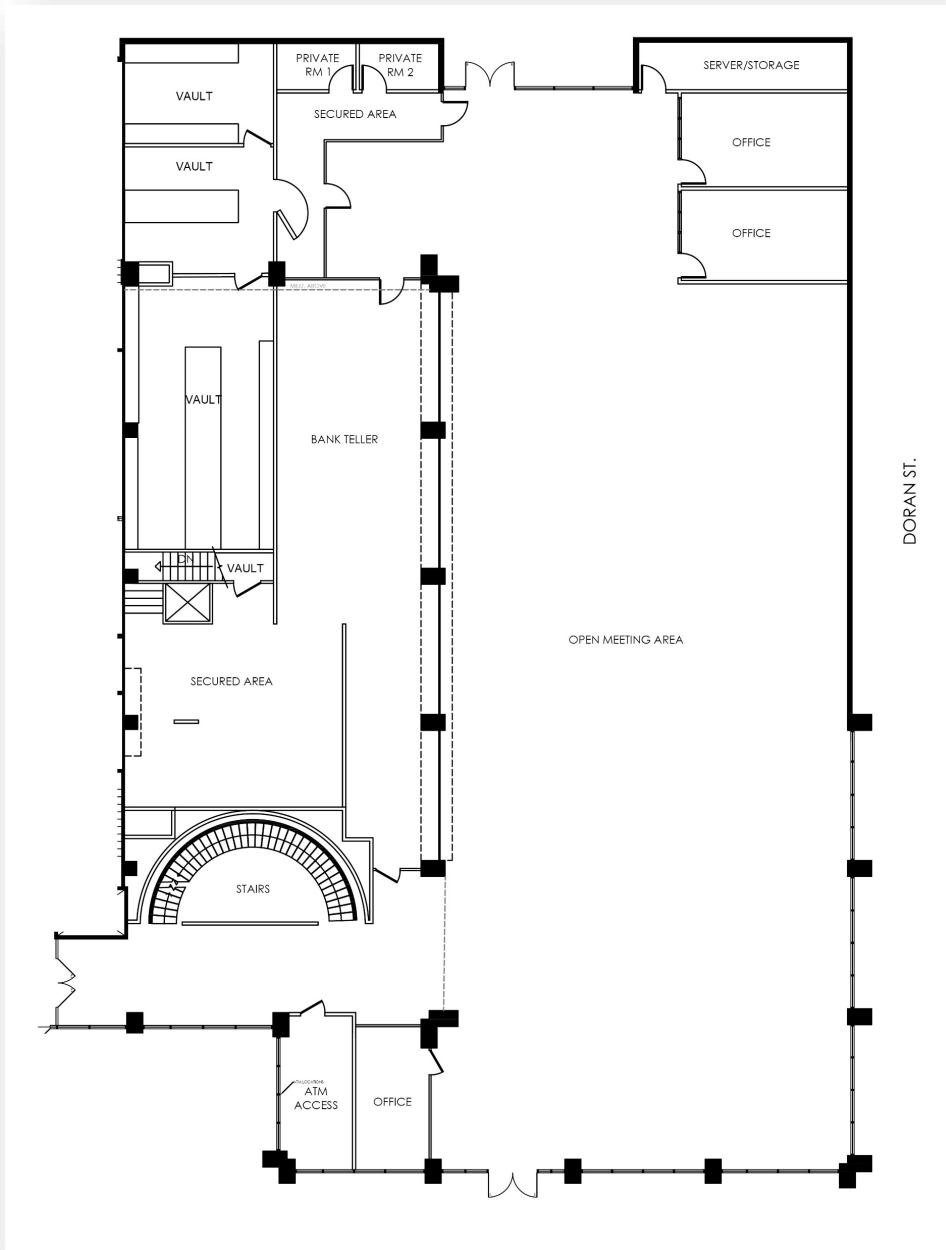
CBRE



	1 Mile	3 Miles	5 Miles
Population	65,611	214,847	520,305
Average HH Income	\$96,590	\$111,883	\$123,818
Daytime Population	85,154	232,590	539,639

DEMOGRAPHICS

# FLOORPLANS



**CBRE**

Ground Floor | For Lease

535 N Brand Blvd, Glendale, CA 91203

# Geoff Martin

Senior Vice President

+1 818 502 6739

geoff.martin@cbre.com

Lic. 01180819

# Ryan Burnett

First Vice President

+1 818 502 6791

ryan.burnett@cbre.com

Lic. 01481691

# Brian Yoshimura

Associate

+1 818 502 6736

brian.yoshimura@cbre.com

Lic. 01967227



© 2025 CBRE, Inc. All rights reserved. This information has been obtained from sources believed reliable but has not been verified for accuracy or completeness. CBRE, Inc. makes no guarantee, representation or warranty and accepts no responsibility or liability as to the accuracy, completeness, or reliability of the information contained herein. You should conduct a careful, independent investigation of the property and verify all information. Any reliance on this information is solely at your own risk. CBRE and the CBRE logo are service marks of CBRE, Inc. All other marks displayed on this document are the property of their respective owners, and the use of such marks does not imply any affiliation with or endorsement of CBRE. Photos herein are the property of their respective owners. Use of these images without the express written consent of the owner is prohibited.