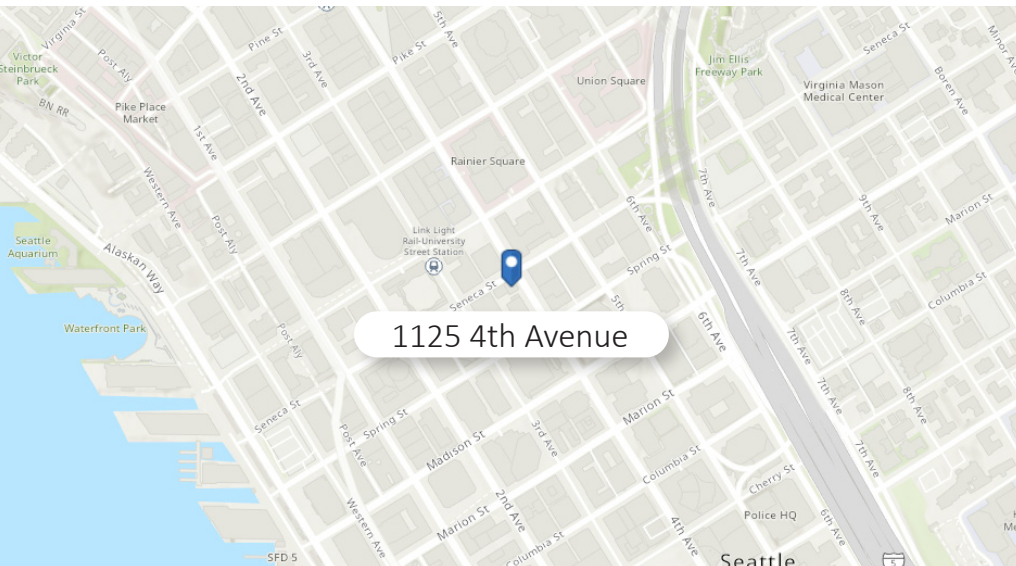


FOR LEASE

JEWEL BOX RETAIL CORNER

1125 4th AVENUE, SEATTLE | 98101



PROPERTY FEATURES

- Jewel box retail corner on 4th and Seneca, formerly Starbucks.
- 1st time available in almost 30 years.
- 18+ ft. ceilings with excellent natural light.
- 2 restrooms and back office/prep kitchen currently in place.
- Lower level office/storage space.
- Available August 1, 2022.
- 4,350 SF TOTAL (2,872 SF main floor, 1,478 SF lower level)
- \$38.00/SF/YR + NNN (\$5.14/SF/YR 2022 est.)
- Please call brokers for more information and to arrange a tour.



**CAMERON
KENT**

206.838.7737
ckent@ewingandclark.com

**TOM
GRAFF**

206.441.7900
tomgraff@ewingandclark.com

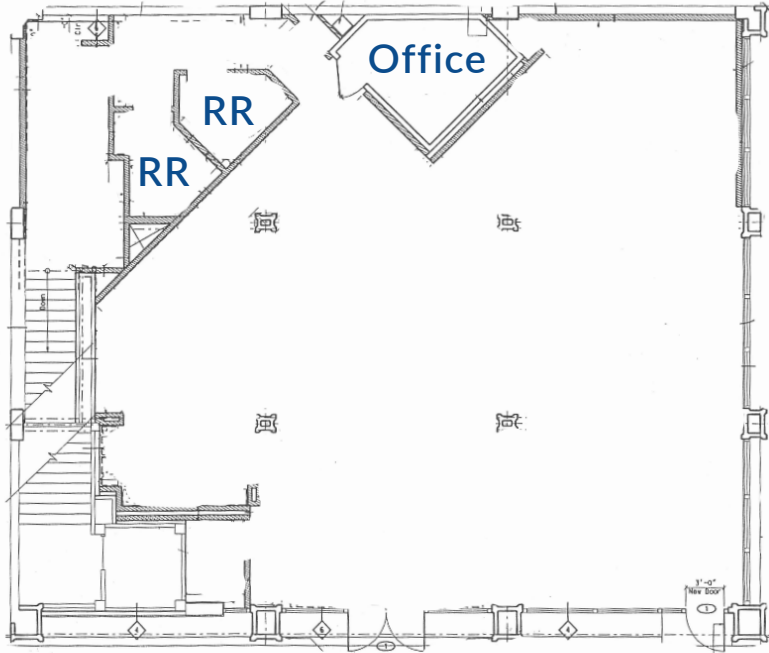
FLOOR PLAN

JEWEL BOX RETAIL CORNER

1125 4th AVENUE, SEATTLE | 98101

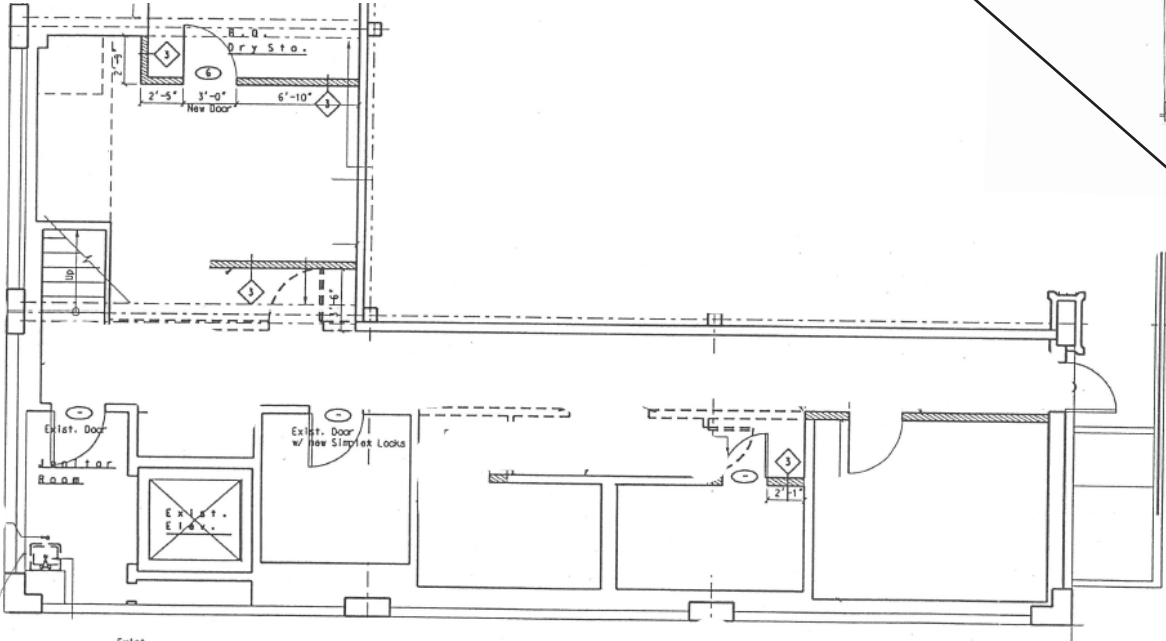
FIRST FLOOR
2,872 SF

LOWER LEVEL
1,478 SF



Seneca Street

4th Avenue



CAMERON KENT | 206.838.7737 | ckent@ewingandclark.com

TOM GRAFF | 206.441.7900 | tomgraff@ewingandclark.com