

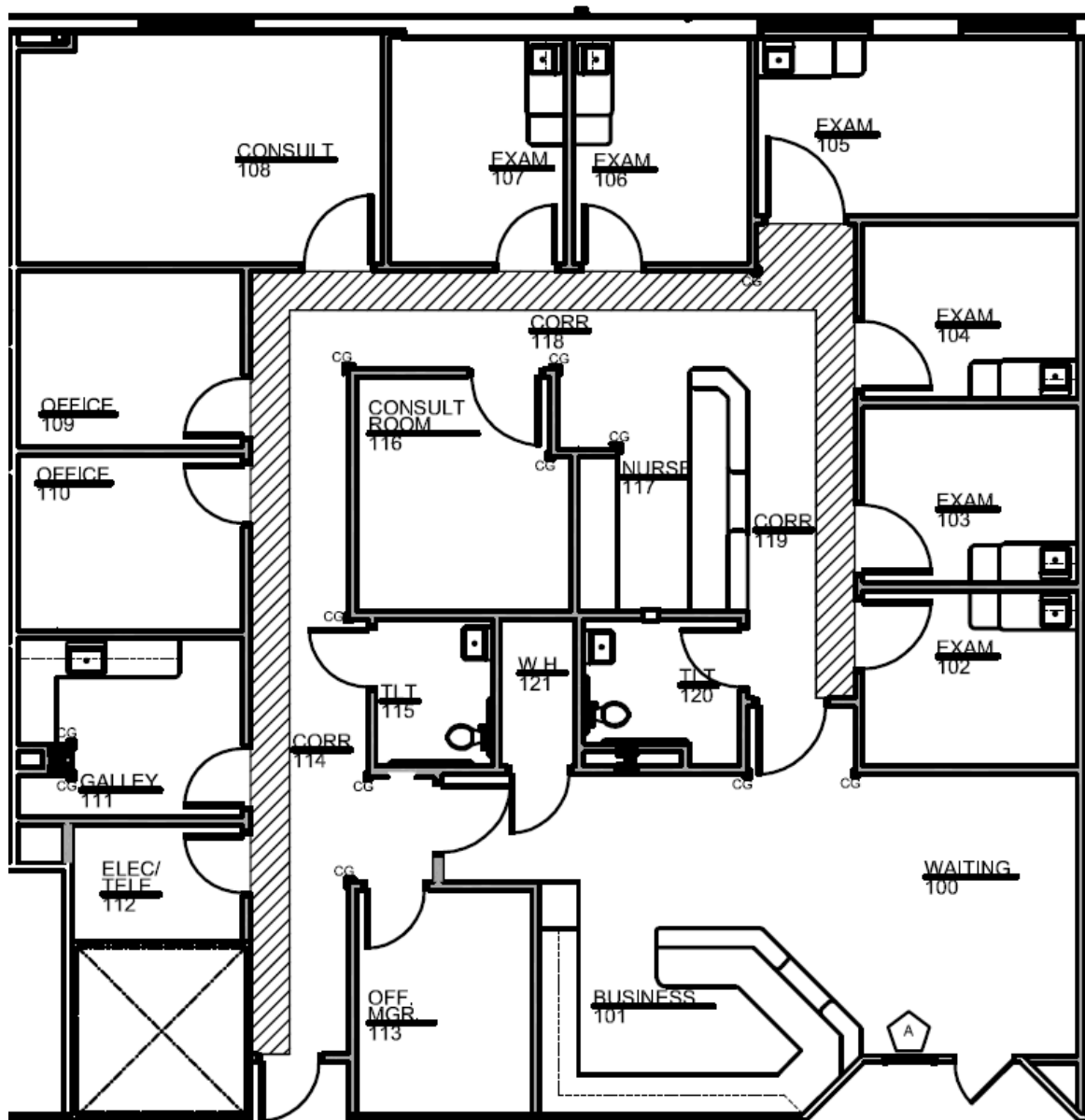
# SUNNYVALE MEDICAL PLAZA

## Suite Plan

341 WHEATFIELD DRIVE  
SUNNYVALE, TX 75182

### Suite 240

3,396 SF



CONTACT LILLIBRIDGE



Jinny Saad, *Leasing Manager*  
(512) 961-7336  
[Jinny.Saad@LillibrIDGE.com](mailto:Jinny.Saad@LillibrIDGE.com)