



4860 W Adams Blvd

4860 W Adams Blvd, Los Angeles, CA 90016



Brandon Gross

GG Coastal Living Real Estate
2118 Wilshire Blvd, Santa Monica, CA 90403
brandon@ggcoastal.com
(310) 991-3002

4860 W Adams Blvd

\$32.76 /SF/YR

4860 W. Adams is the site of a former hardware store that is currently being offered as a creative and/or retail space and office ready. Ideal for showroom, gallery, creative offices. The tenants will benefit from the increasingly hot location and curb appeal of the building's newly enhanced facade. Opportunity for access to a back patio as well. Space includes private restroom....

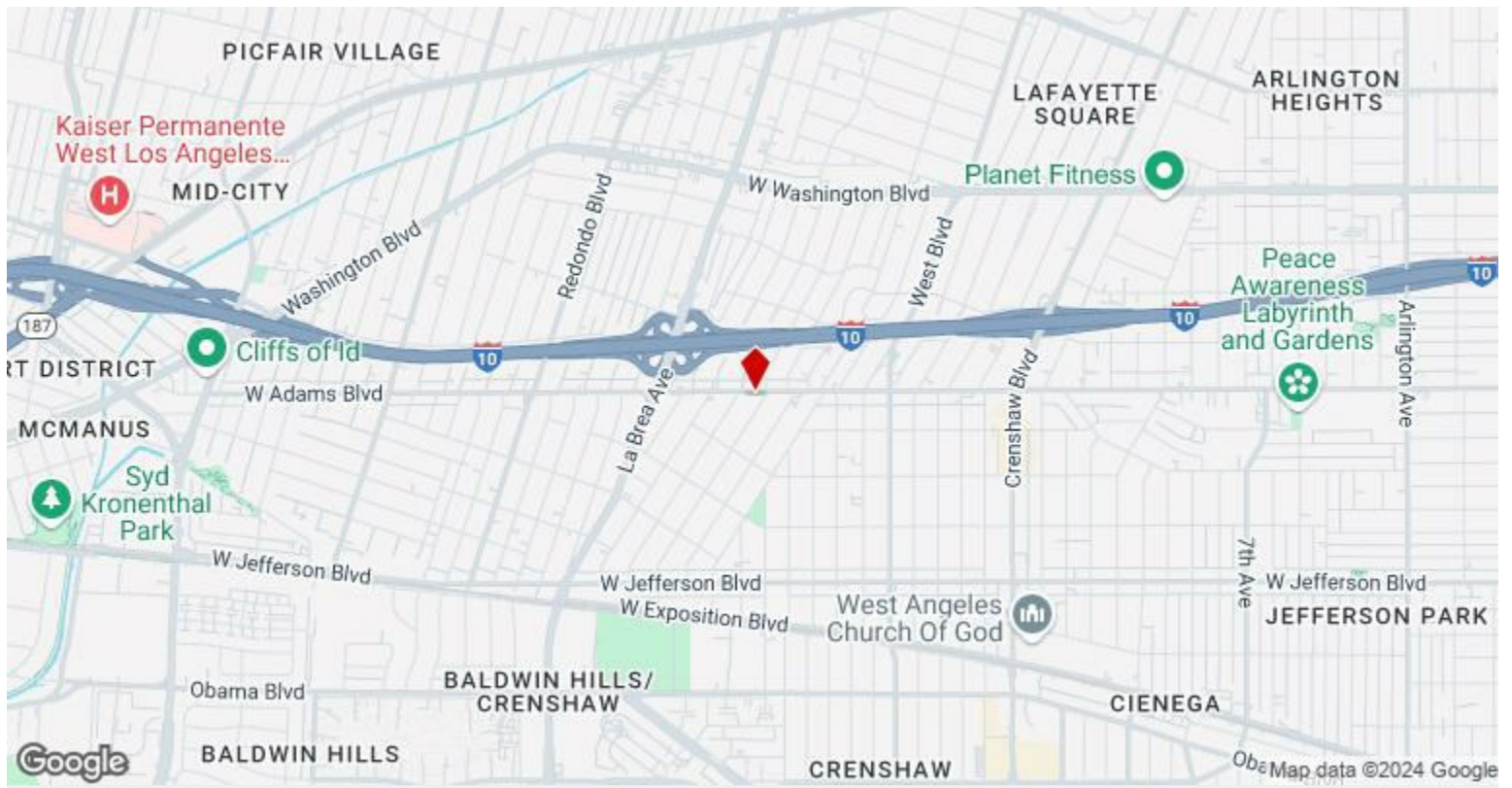
- Creative space with high ceilings and a trendy, modern-open vibe.
- Open floor plan
- Back patio



Rental Rate:	\$32.76 /SF/YR
Property Type:	Retail
Property Subtype:	Storefront Retail/Residential
Gross Leasable Area:	2,626 SF
Year Built:	1925
Walk Score ®:	84 (Very Walkable)
Transit Score ®:	56 (Good Transit)
Rental Rate Mo:	\$2.73 /SF/MO

1st Floor

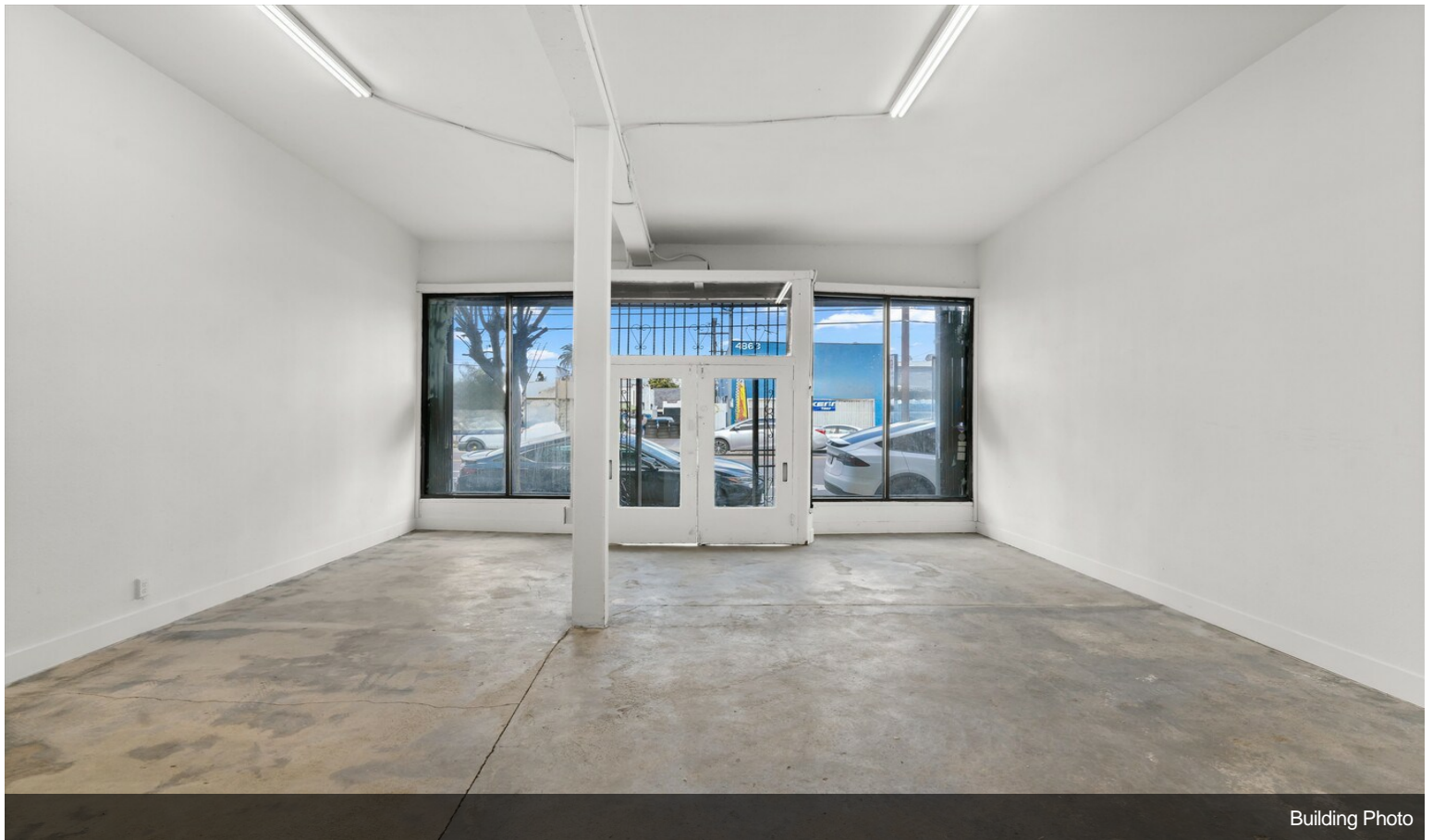
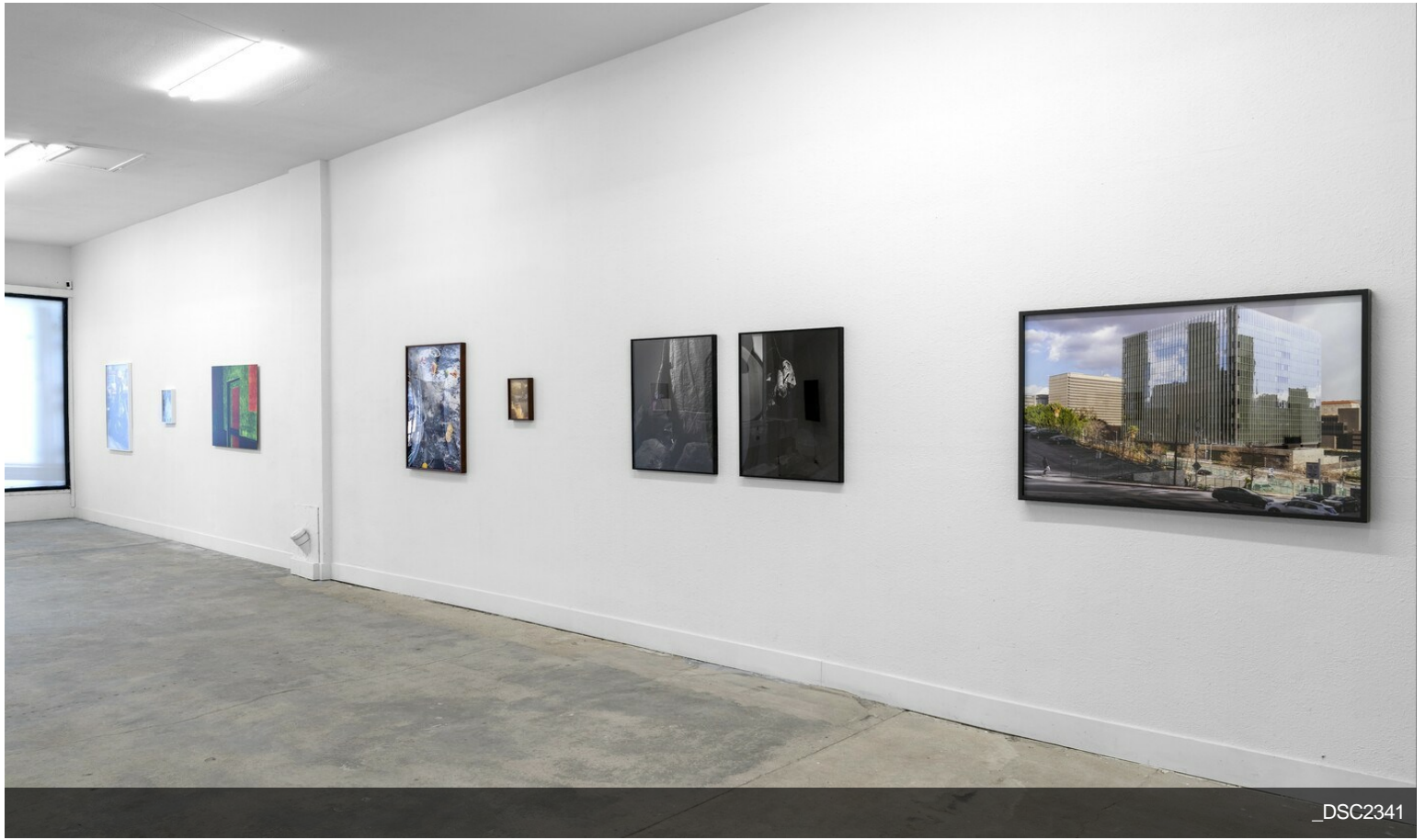
Space Available	1,465 SF
Rental Rate	\$32.76 /SF/YR
Date Available	October 01, 2024
Service Type	Modified Gross
Space Type	New
Space Use	Office/Retail
Lease Term	Negotiable



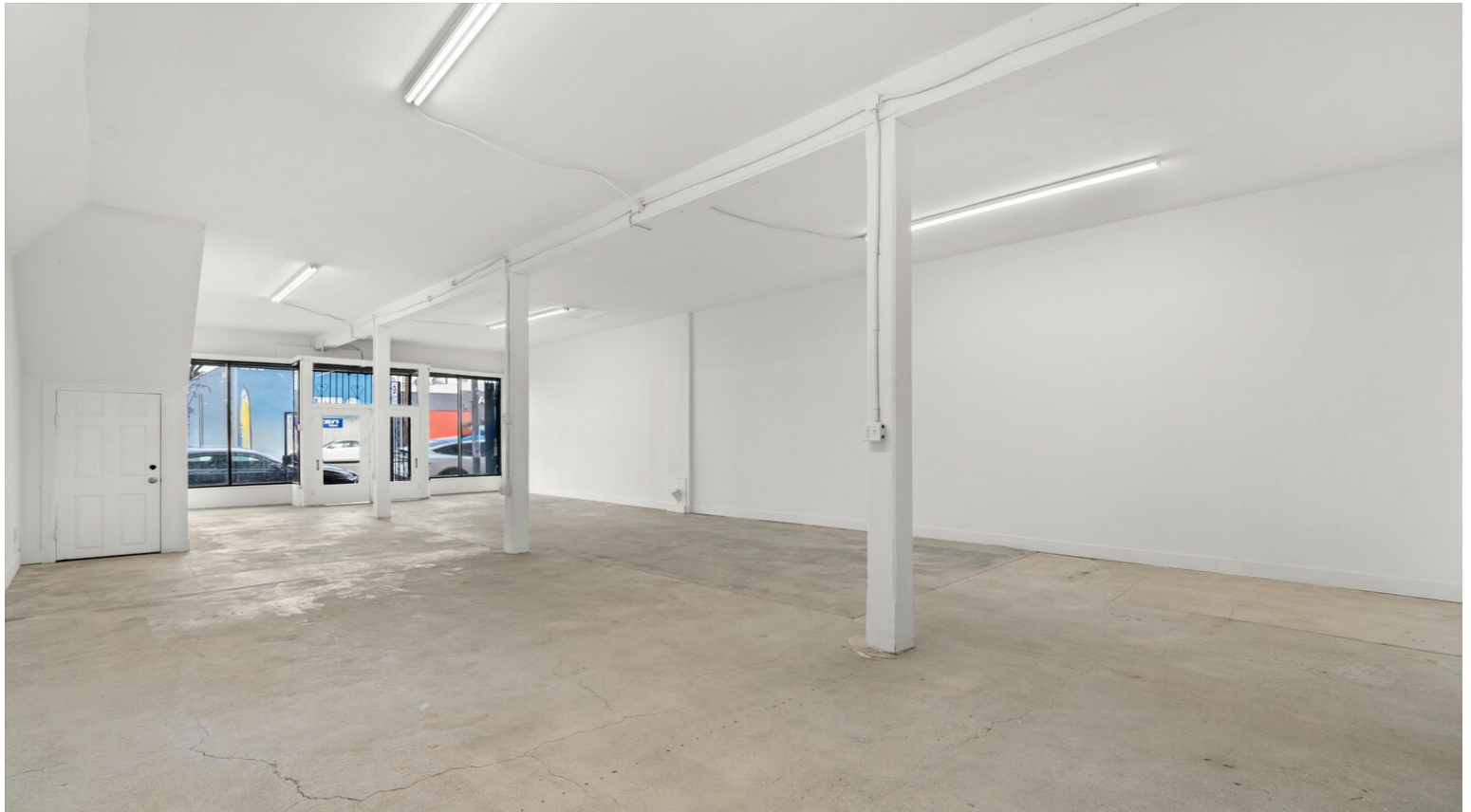
4860 W Adams Blvd, Los Angeles, CA 90016

4860 W. Adams is the site of a former hardware store that is currently being offered as a creative and/or retail space and office ready. Ideal for showroom, gallery, creative offices. The tenants will benefit from the increasingly hot location and curb appeal of the building's newly enhanced facade. Opportunity for access to a back patio as well. Space includes private restroom.

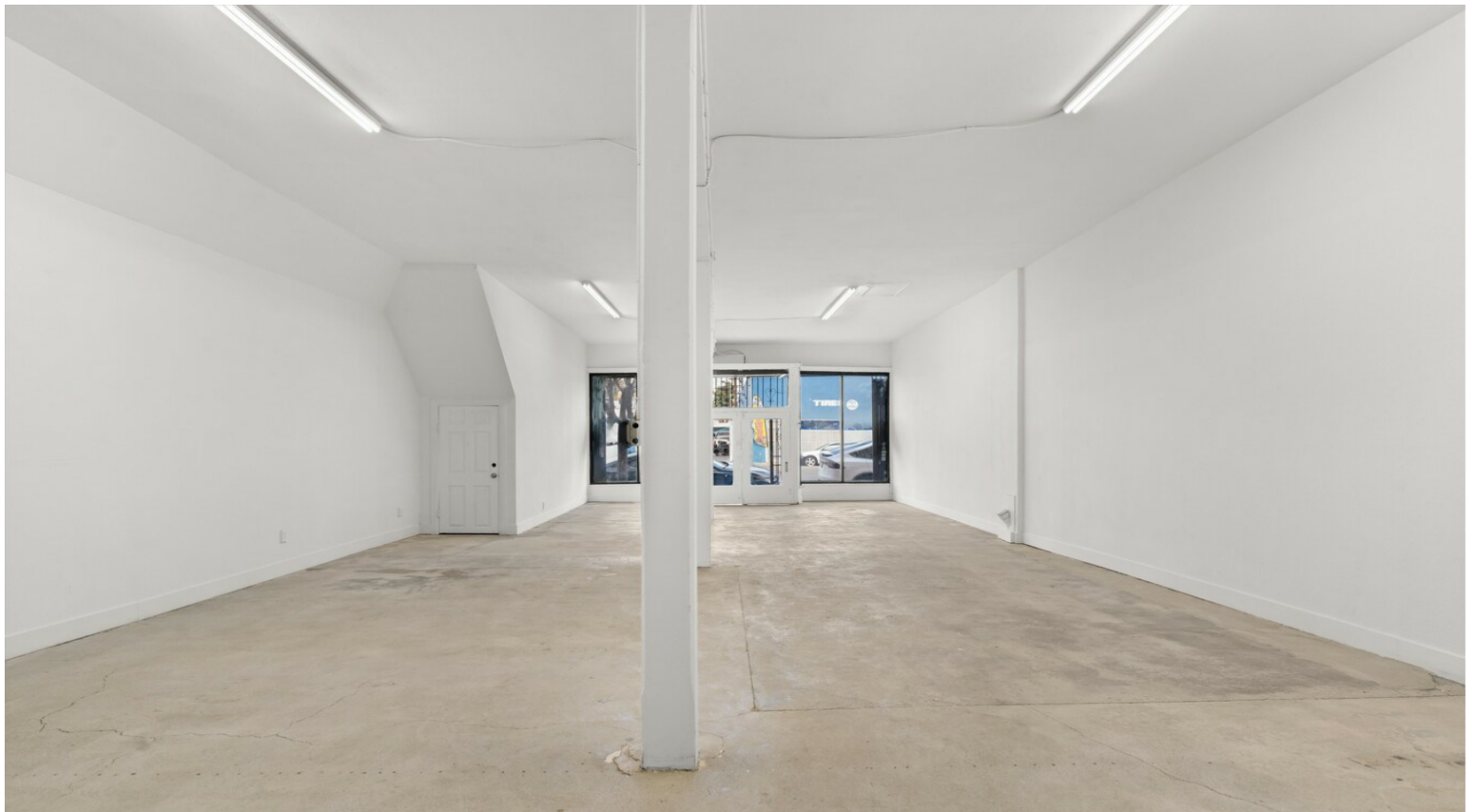
Property Photos



Property Photos

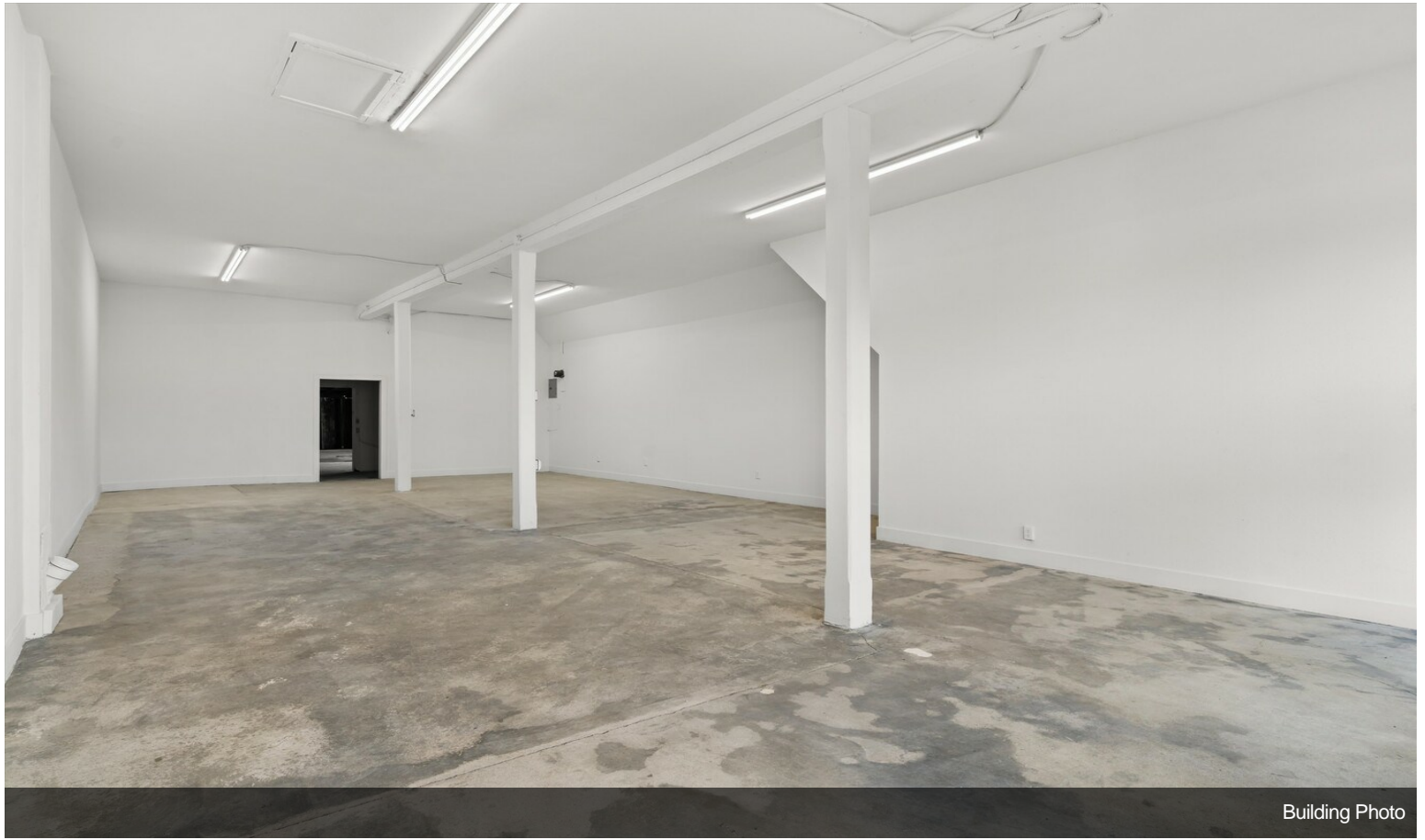


Building Photo

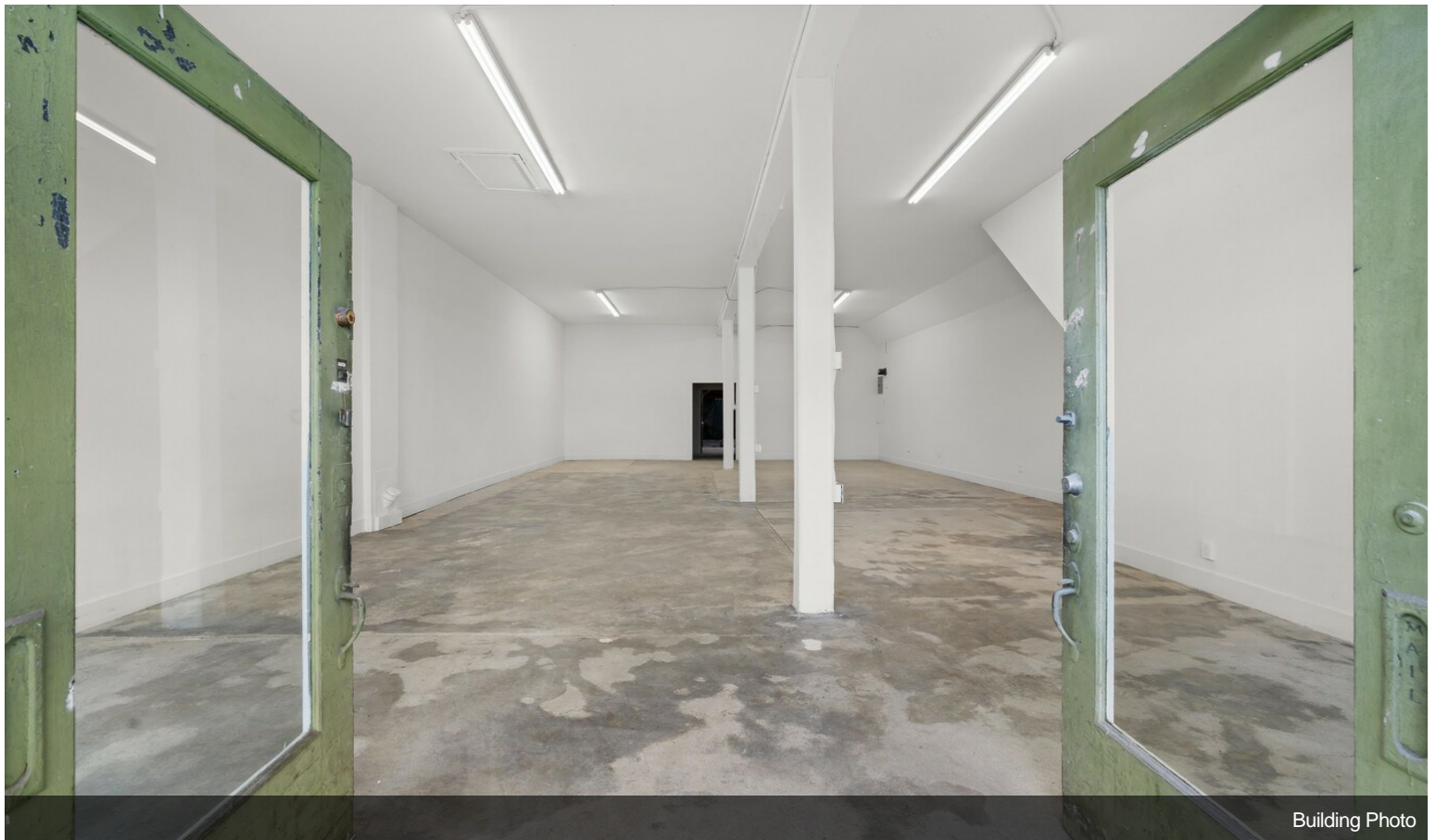


Building Photo

Property Photos

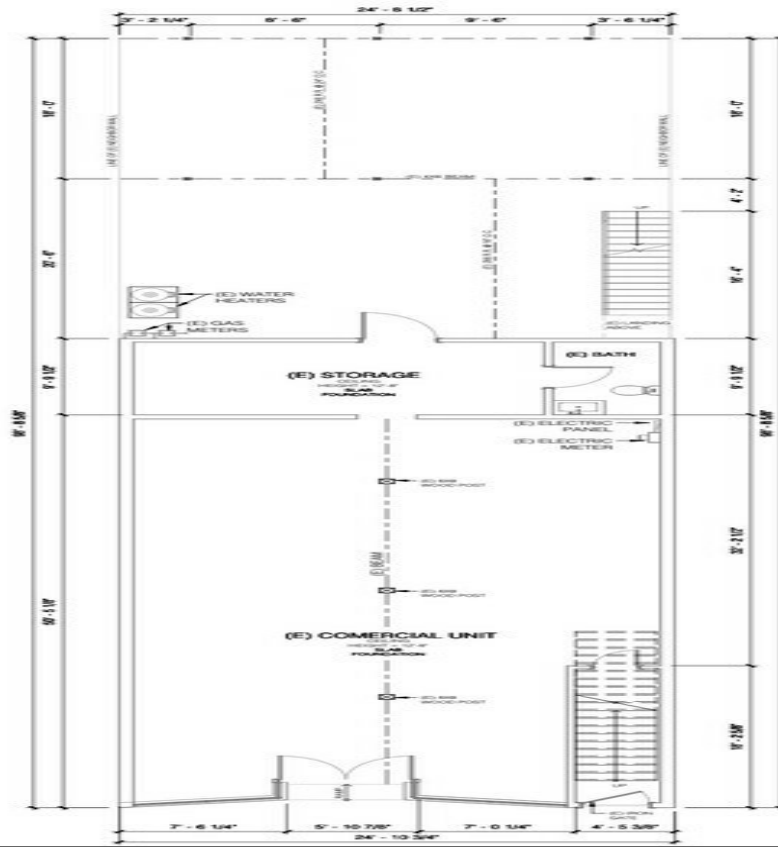


Building Photo



Building Photo

Property Photos



WALL LEGEND	
	EXISTING WALL
	DEM'D WALL
	NEW STUD WALL
	1-HR FIRE RATED WALL, 5/8\"/>
	EMK. TYPE 'X' GYPSUM BOARD



1 EXISTING FIRST FLOOR PLAN - NO CHANGE
3/16" = 1'-0"

Floorplan studio (1)