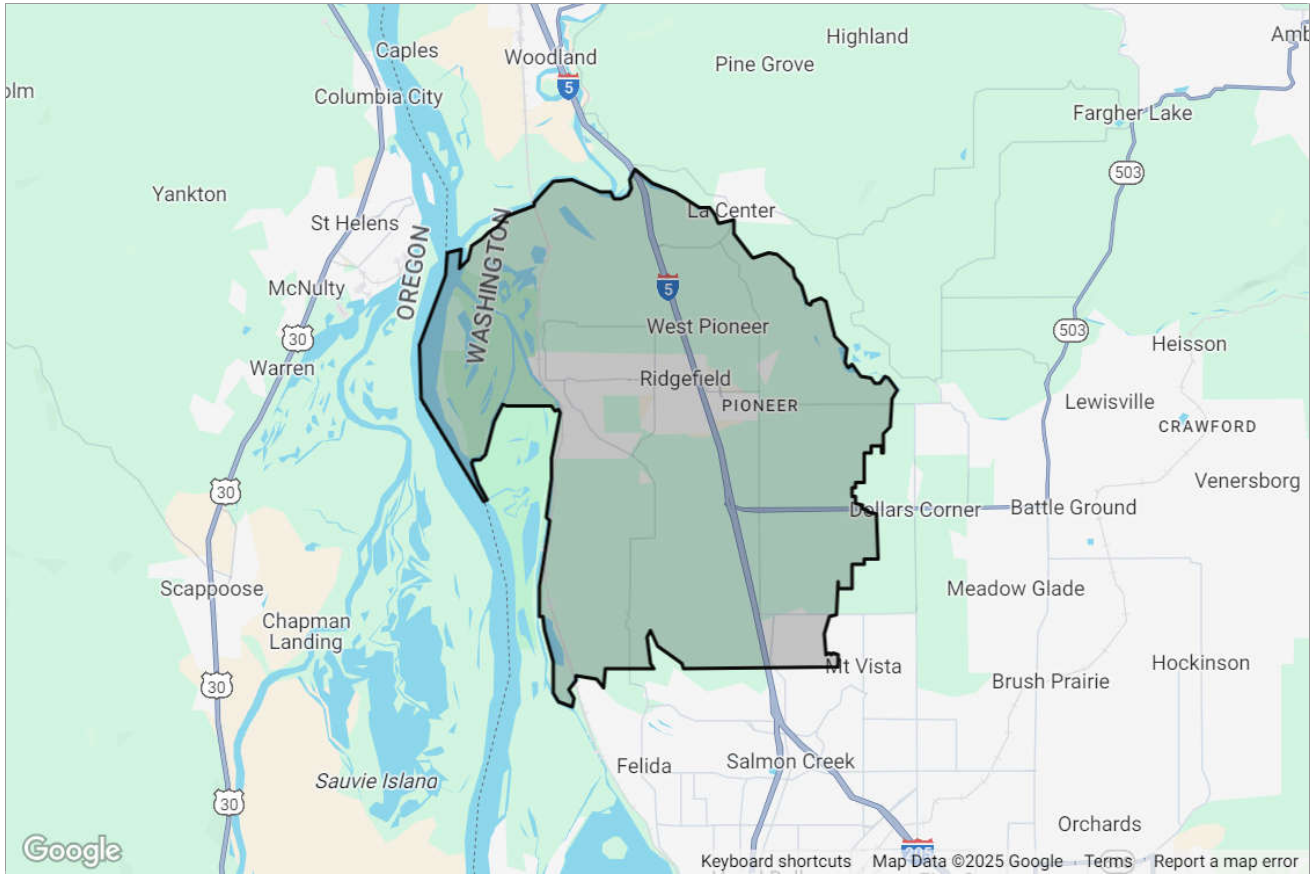


# John L. Scott®

## REAL ESTATE

TRADE AREA REPORT

# Ridgefield, WA 98642



Presented by

**Cara Knode** | Managing Broker

Washington Real Estate License: 23558

# John L. Scott

## REAL ESTATE

Work: (360) 608-8631

Main: [caraknode@johnlscott.com](mailto:caraknode@johnlscott.com)

Agent: [caraknode.johnlscott.com](mailto:caraknode.johnlscott.com)

201 SE Park Plaza Drive, Tower 1 #105  
Vancouver, WA 98684

## Ridgefield, WA 98642: Population Comparison

### Total Population

This chart shows the total population in an area, compared with other geographies.

Data Source: U.S. Census American Community Survey via Esri, 2023

Update Frequency: Annually

■ 2023  
■ 2028 (Projected)



### Population Density

This chart shows the number of people per square mile in an area, compared with other geographies.

Data Source: U.S. Census American Community Survey via Esri, 2023

Update Frequency: Annually

■ 2023  
■ 2028 (Projected)



### Population Change Since 2020

This chart shows the percentage change in area's population from 2020 to 2023, compared with other geographies.

Data Source: U.S. Census American Community Survey via Esri, 2023

Update Frequency: Annually

■ 2023  
■ 2028 (Projected)



### Total Daytime Population

This chart shows the number of people who are present in an area during normal business hours, including workers, and compares that population to other geographies. Daytime population is in contrast to the "resident" population present during evening and nighttime hours.

Data Source: U.S. Census American Community Survey via Esri, 2023

Update Frequency: Annually

■ 98642



## Daytime Population Density

This chart shows the number people who are present in an area during normal business hours, including workers, per square mile in an area, compared with other geographies. Daytime population is in contrast to the "resident" population present during evening and nighttime hours.

Data Source: U.S. Census American Community Survey via Esri, 2023

Update Frequency: Annually

■ 98642



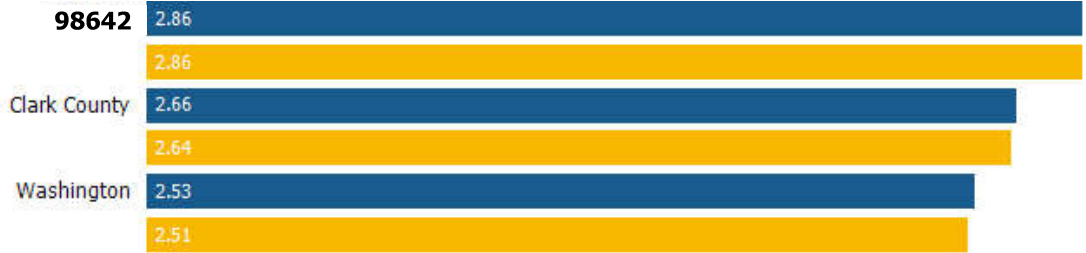
## Average Household Size

This chart shows the average household size in an area, compared with other geographies.

Data Source: U.S. Census American Community Survey via Esri, 2023

Update Frequency: Annually

■ 2023  
■ 2028 (Projected)



## Population Living in Family Households

This chart shows the percentage of an area's population that lives in a household with one or more individuals related by birth, marriage or adoption, compared with other geographies.

Data Source: U.S. Census American Community Survey via Esri, 2023

Update Frequency: Annually

■ 2023  
■ 2028 (Projected)



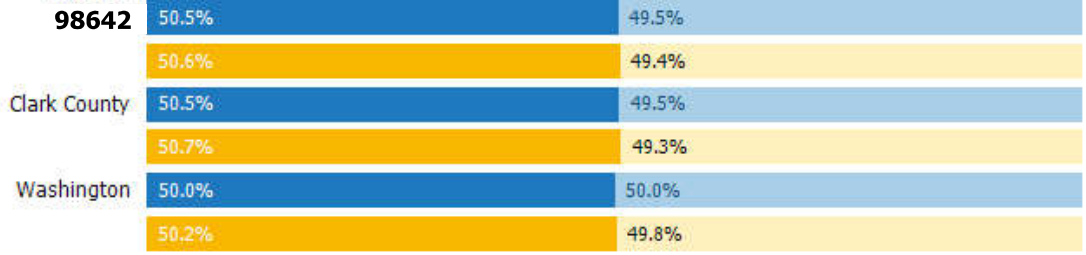
## Female / Male Ratio

This chart shows the ratio of females to males in an area, compared with other geographies.

Data Source: U.S. Census American Community Survey via Esri, 2023

Update Frequency: Annually

- Women 2023 2023
- Men 2023 2023
- Women 2028 (Projected) 2028 (Projected)
- Men 2028 (Projected) 2028 (Projected)



## Ridgefield, WA 98642: Age Comparison

### Median Age

This chart shows the median age in an area, compared with other geographies.

Data Source: U.S. Census American Community Survey via Esri, 2023

Update Frequency: Annually

■ 2023  
■ 2028 (Projected)



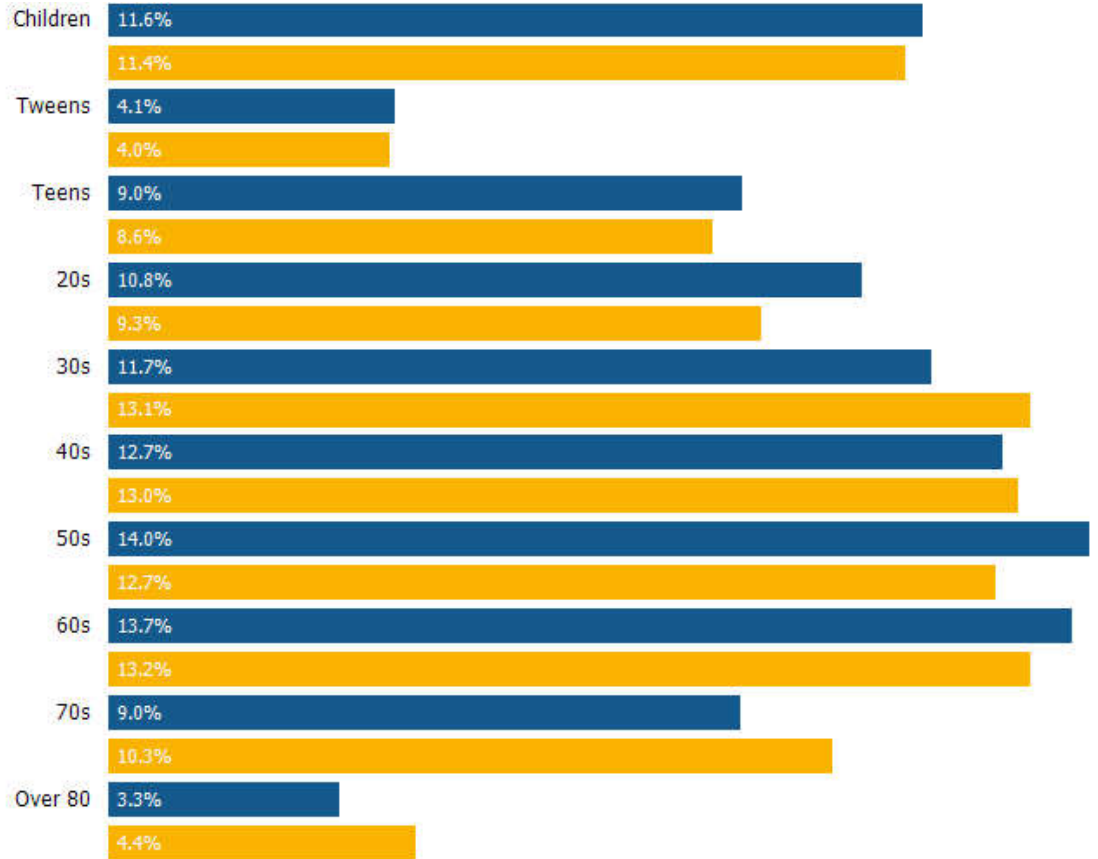
### Population by Age

This chart breaks down the population of an area by age group.

Data Source: U.S. Census American Community Survey via Esri, 2023

Update Frequency: Annually

■ 2023  
■ 2028 (Projected)



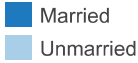
## Ridgefield, WA 98642: Marital Status Comparison

### Married / Unmarried Adults Ratio

This chart shows the ratio of married to unmarried adults in an area, compared with other geographies.

Data Source: U.S. Census American Community Survey via Esri, 2023

Update Frequency: Annually



### Married

This chart shows the number of people in an area who are married, compared with other geographies.

Data Source: U.S. Census American Community Survey via Esri, 2023

Update Frequency: Annually



### Never Married

This chart shows the number of people in an area who have never been married, compared with other geographies.

Data Source: U.S. Census American Community Survey via Esri, 2023

Update Frequency: Annually



### Widowed

This chart shows the number of people in an area who are widowed, compared with other geographies.

Data Source: U.S. Census American Community Survey via Esri, 2023

Update Frequency: Annually



### Divorced

This chart shows the number of people in an area who are divorced, compared with other geographies.

Data Source: U.S. Census American Community Survey via Esri, 2023

Update Frequency: Annually



## Ridgefield, WA 98642: Economic Comparison

### Average Household Income

This chart shows the average household income in an area, compared with other geographies.

Data Source: U.S. Census American Community Survey via Esri, 2023

Update Frequency: Annually

■ 2023  
■ 2028 (Projected)



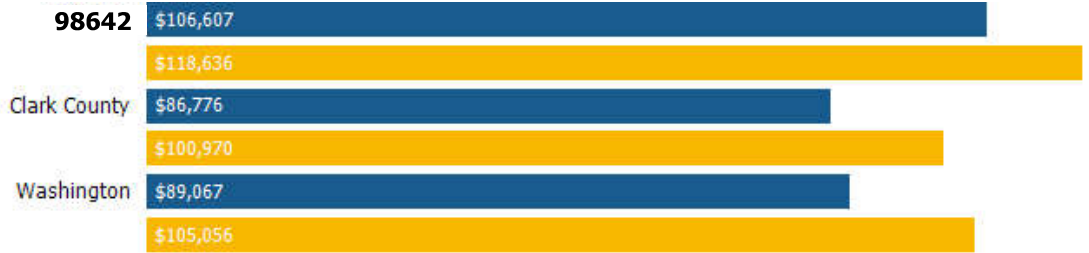
### Median Household Income

This chart shows the median household income in an area, compared with other geographies.

Data Source: U.S. Census American Community Survey via Esri, 2023

Update Frequency: Annually

■ 2023  
■ 2028 (Projected)



### Per Capita Income

This chart shows per capita income in an area, compared with other geographies.

Data Source: U.S. Census American Community Survey via Esri, 2023

Update Frequency: Annually

■ 2023  
■ 2028 (Projected)



### Average Disposable Income

This chart shows the average disposable income in an area, compared with other geographies.

Data Source: U.S. Census American Community Survey via Esri, 2023

Update Frequency: Annually



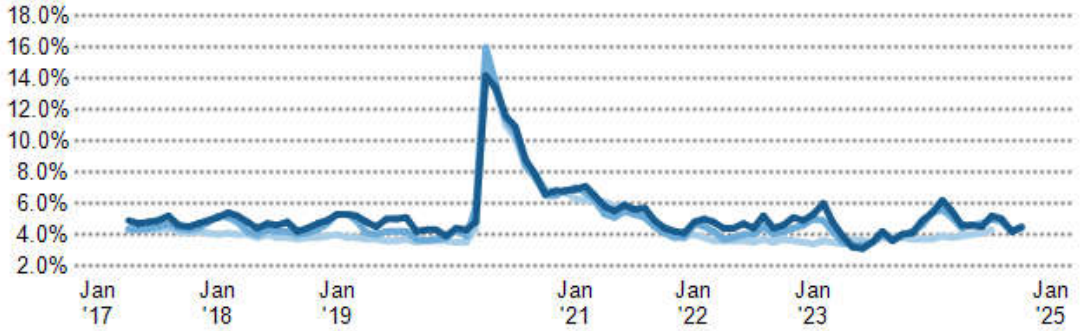
## Unemployment Rate

This chart shows the unemployment trend in an area, compared with other geographies.

Data Source: Bureau of Labor Statistics via PolicyMap

Update Frequency: Monthly

- Clark County
- Washington
- USA

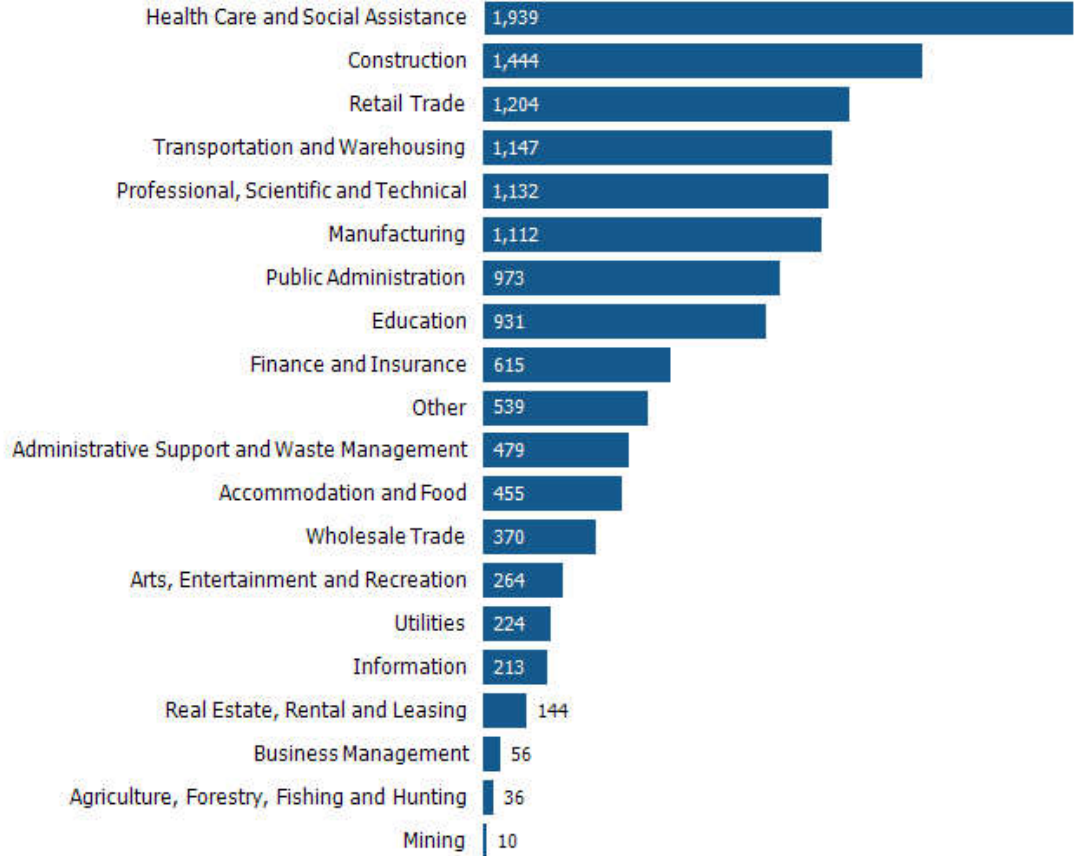


## Employment Count by Industry

This chart shows industries in an area and the number of people employed in each category.

Data Source: Bureau of Labor Statistics via Esri, 2023

Update Frequency: Annually





## Ridgefield, WA 98642: Education Comparison

### Less than 9th Grade

This chart shows the percentage of people in an area who have less than a ninth grade education, compared with other geographies.

Data Source: U.S. Census American Community Survey via Esri, 2023

Update Frequency: Annually



### Some High School

This chart shows the percentage of people in an area whose highest educational achievement is some high school, without graduating or passing a high school GED test, compared with other geographies.

Data Source: U.S. Census American Community Survey via Esri, 2023

Update Frequency: Annually



### High School GED

This chart shows the percentage of people in an area whose highest educational achievement is passing a high school GED test, compared with other geographies.

Data Source: U.S. Census American Community Survey via Esri, 2023

Update Frequency: Annually



### High School Graduate

This chart shows the percentage of people in an area whose highest educational achievement is high school, compared with other geographies.

Data Source: U.S. Census American Community Survey via Esri, 2023

Update Frequency: Annually



**Some College**

This chart shows the percentage of people in an area whose highest educational achievement is some college, without receiving a degree, compared with other geographies.

Data Source: U.S. Census American Community Survey via Esri, 2023

Update Frequency: Annually



**Associate Degree**

This chart shows the percentage of people in an area whose highest educational achievement is an associate degree, compared with other geographies.

Data Source: U.S. Census American Community Survey via Esri, 2023

Update Frequency: Annually



**Bachelor's Degree**

This chart shows the percentage of people in an area whose highest educational achievement is a bachelor's degree, compared with other geographies.

Data Source: U.S. Census American Community Survey via Esri, 2023

Update Frequency: Annually



**Grad/Professional Degree**

This chart shows the percentage of people in an area whose highest educational achievement is a graduate or professional degree, compared with other geographies.

Data Source: U.S. Census American Community Survey via Esri, 2023

Update Frequency: Annually



## Ridgefield, WA 98642: Commute Comparison

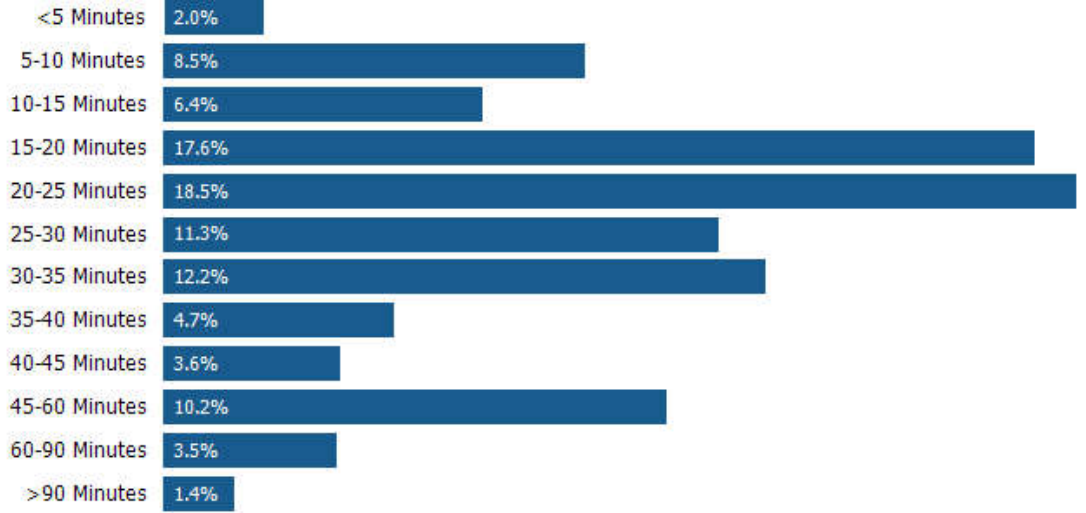
### Average Commute Time

This chart shows average commute times to work, in minutes, by percentage of an area's population.

Data Source: U.S. Census American Community Survey via Esri, 2023

Update Frequency: Annually

■ 98642



### How People Get to Work

This chart shows the types of transportation that residents of the area you searched use for their commute, by percentage of an area's population.

Data Source: U.S. Census American Community Survey via Esri, 2023

Update Frequency: Annually

■ 98642



## Ridgefield, WA 98642: Home Value Comparison

### Median Estimated Home Value

This chart displays property estimates for an area and a subject property, where one has been selected. Estimated home values are generated by a valuation model and are not formal appraisals.

Data Source: Valuation calculations based on public records and MLS sources where licensed

Update Frequency: Monthly



### 12 mo. Change in Median Estimated Home Value

This chart shows the 12-month change in the estimated value of all homes in this area, the county and the state. Estimated home values are generated by a valuation model and are not formal appraisals.

Data Source: Valuation calculations based on public records and MLS sources where licensed

Update Frequency: Monthly



### Median Listing Price

This chart displays the median listing price for homes in this area, the county, and the state.

Data Source: Listing data

Update Frequency: Monthly



### 12 mo. Change in Median Listing Price

This chart displays the 12-month change in the median listing price of homes in this area, and compares it to the county and state.

Data Source: Listing data

Update Frequency: Monthly

