



For Sublease | ±11,092 SF

Freestanding Building with Parking

2341 Broadway Street | Vallejo, CA

Highlights



Great Street
Presence



±54 Parking
Spaces



Fully Sprinklered
Building



Multiple Uses:
Medical, Office,
R&D, Retail, Fitness,
Laboratories, and more.



±2018
Construction



Easy Access from
Sonoma Blvd
(Hwy 29)



Accelerating success.

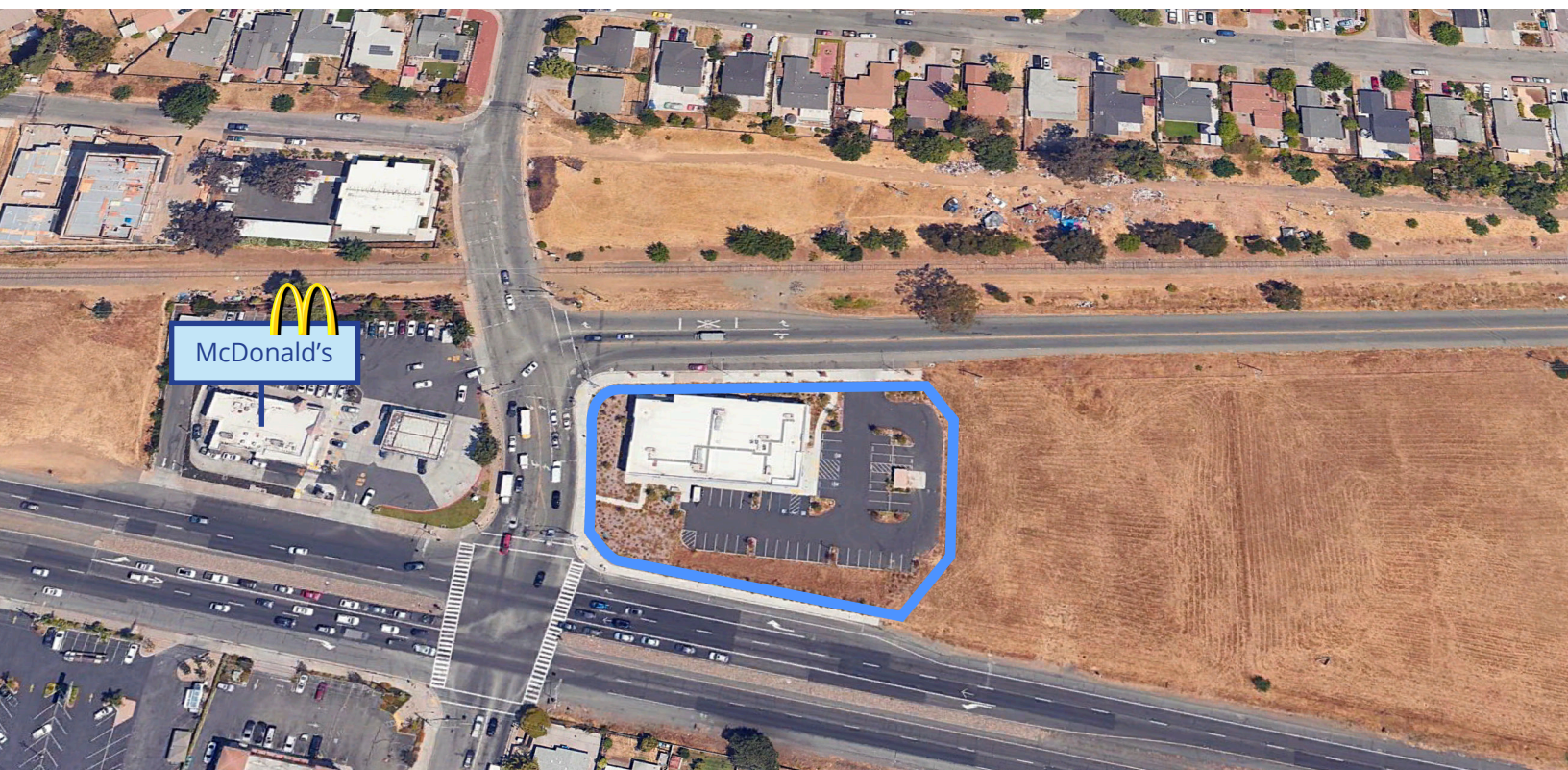
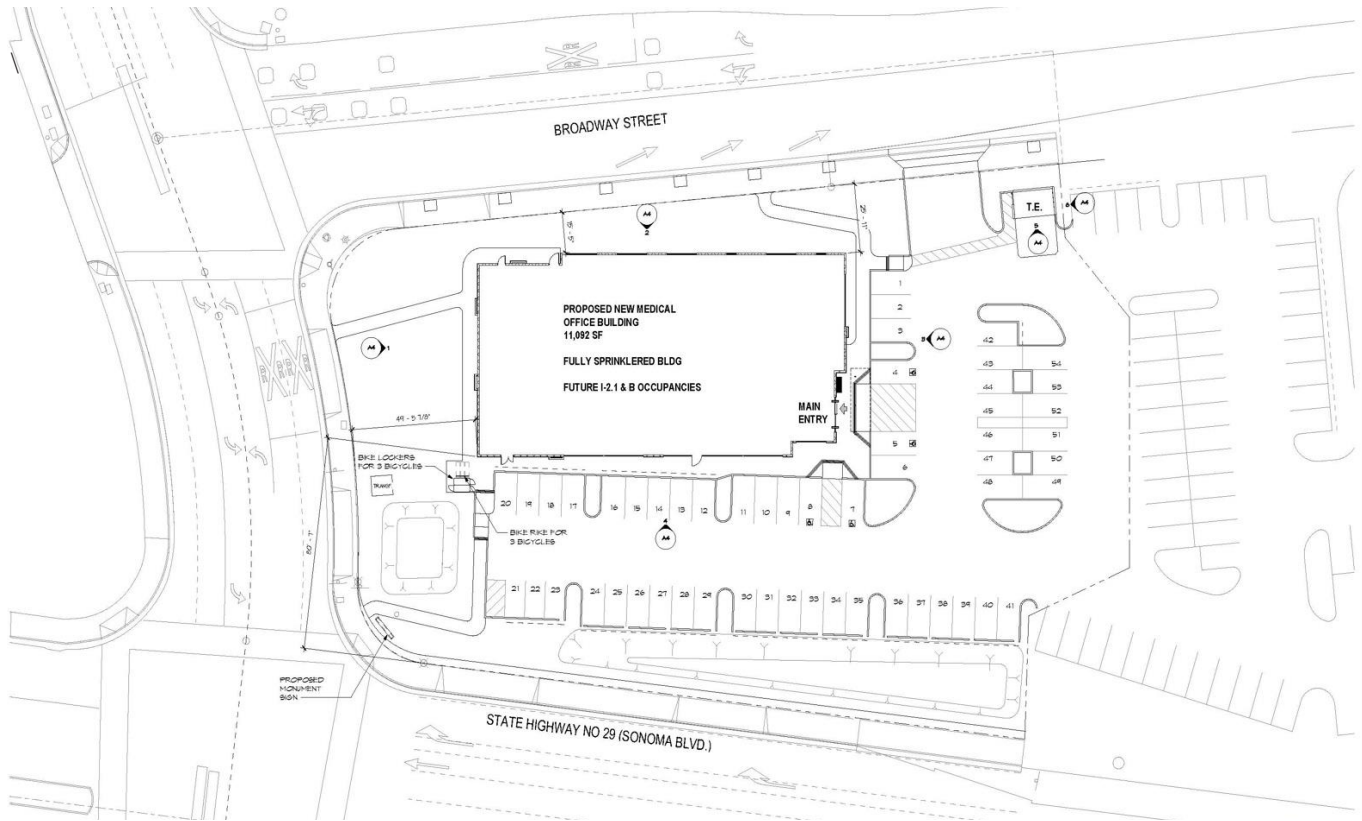
Contact Broker

René Brochier

Senior Vice President
CA License No. 00663110
rene.brochier@colliers.com
+1 925 227 6242

2341 Broadway Street | Vallejo, CA

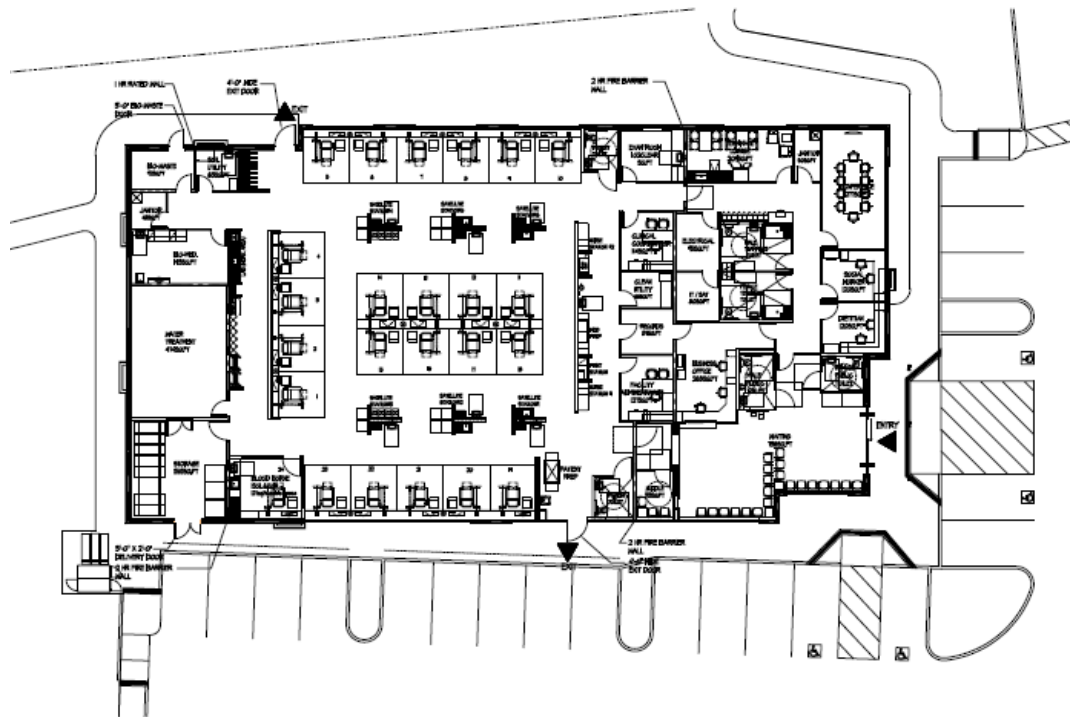
Site Plan



2341 Broadway Street | Vallejo, CA

Floor Plan

±11,092 SF



2341 Broadway Street | Vallejo, CA

Location Overview



Demographics *3 mile radius*



60,093

Total Population



61,018

Daytime Population



12.9%

Population Change
Since 2010



\$86,917

Median Household
Income



24,563

Current Total
Households

2341 Broadway Street | Vallejo, CA

Photo Gallery

