

Premier Industrial Sites

E 21st St N & I-135 | Wichita, KS

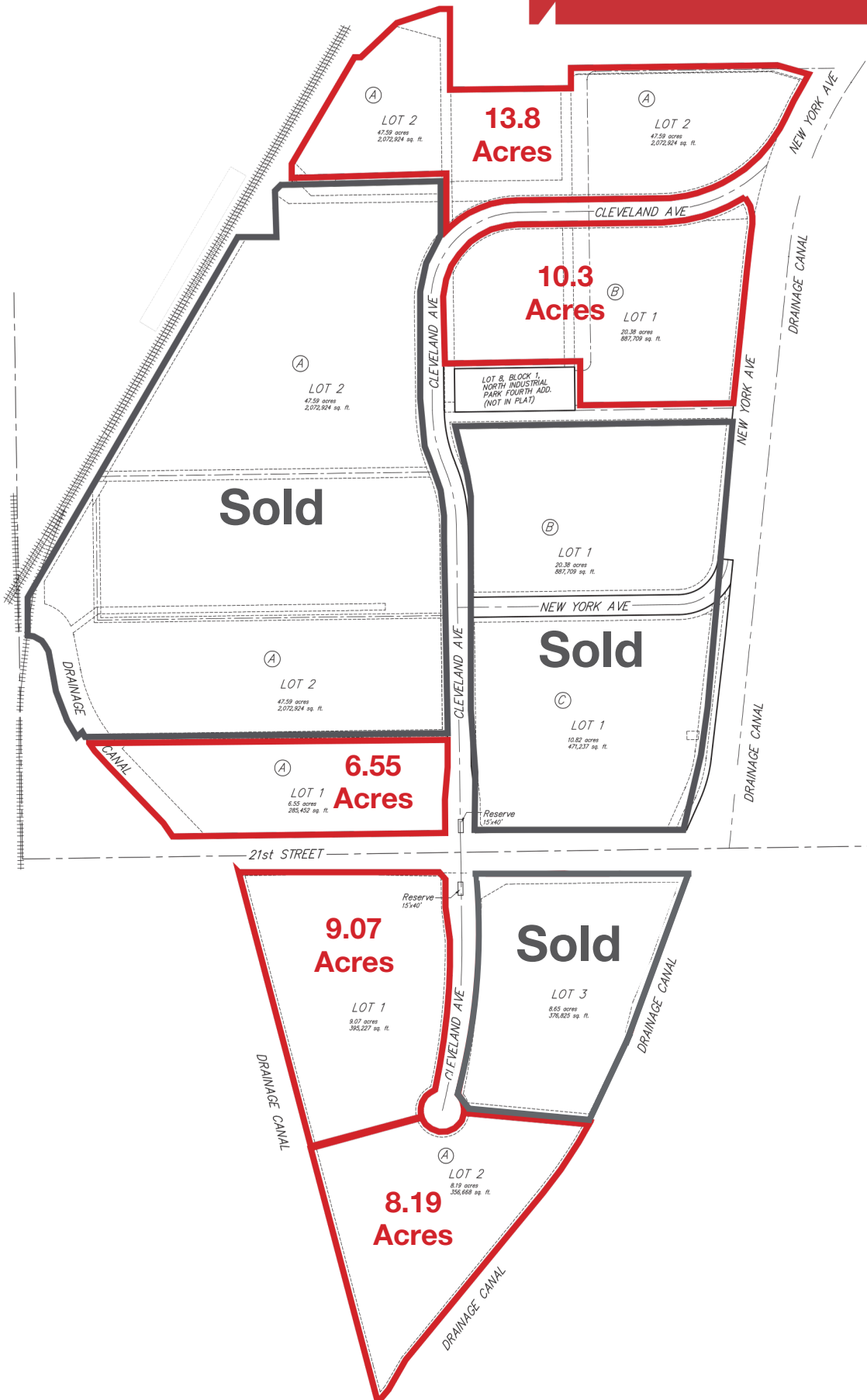


- South Central Kansas's Premier Industrial Development Site
- 120-acre master-planned development
- Lots available for purchase or build-to-suit
- Located in north-central Wichita at I-135 and 21st Street
- Full signalized interchange at I-135 and 21st Street
- Call for pricing

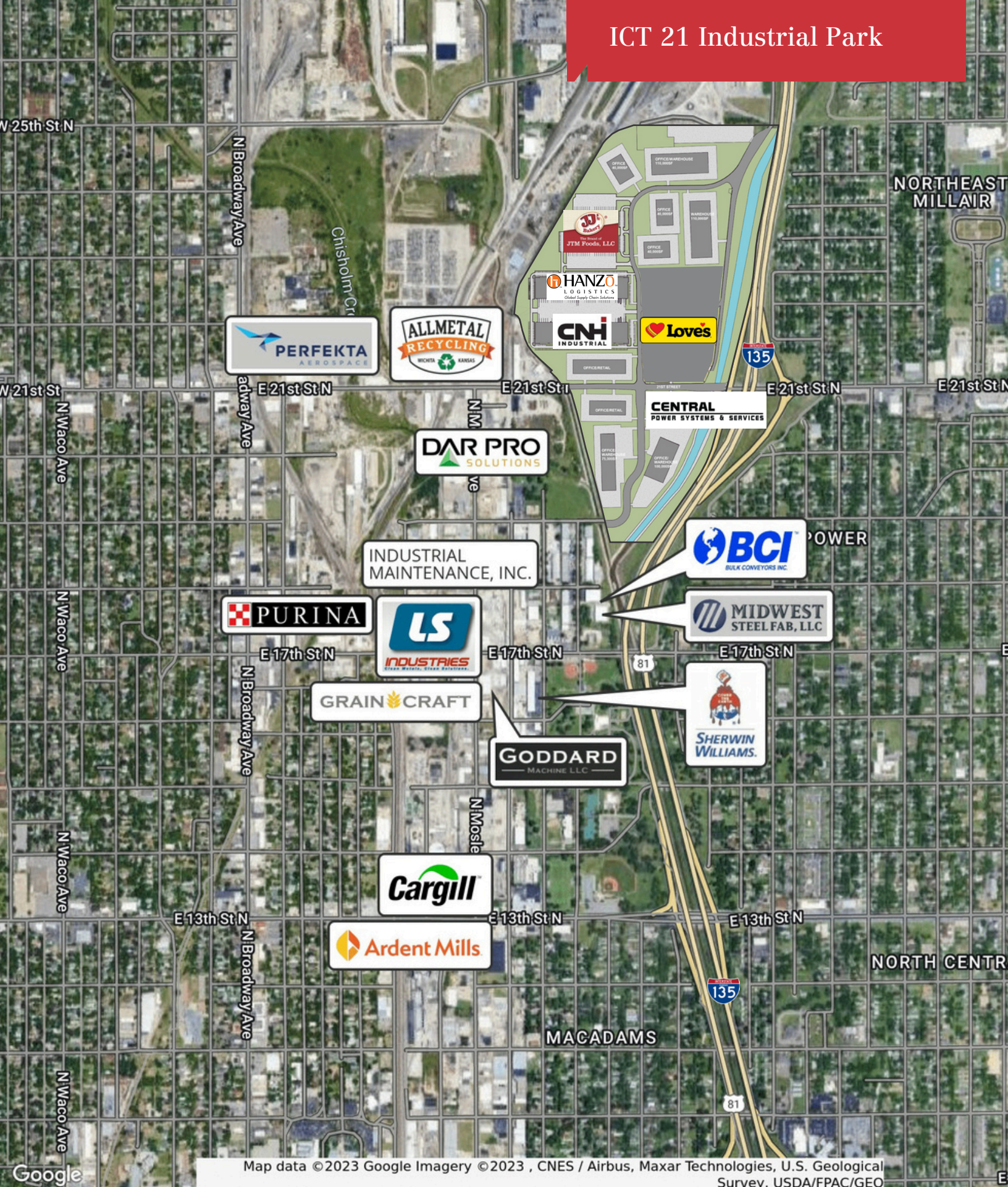
[View Interactive Tour](#)



Plat Map



ICT 21 Industrial Park



Map data ©2023 Google Imagery ©2023 , CNES / Airbus, Maxar Technologies, U.S. Geological Survey, USDA/FPAC/GEO



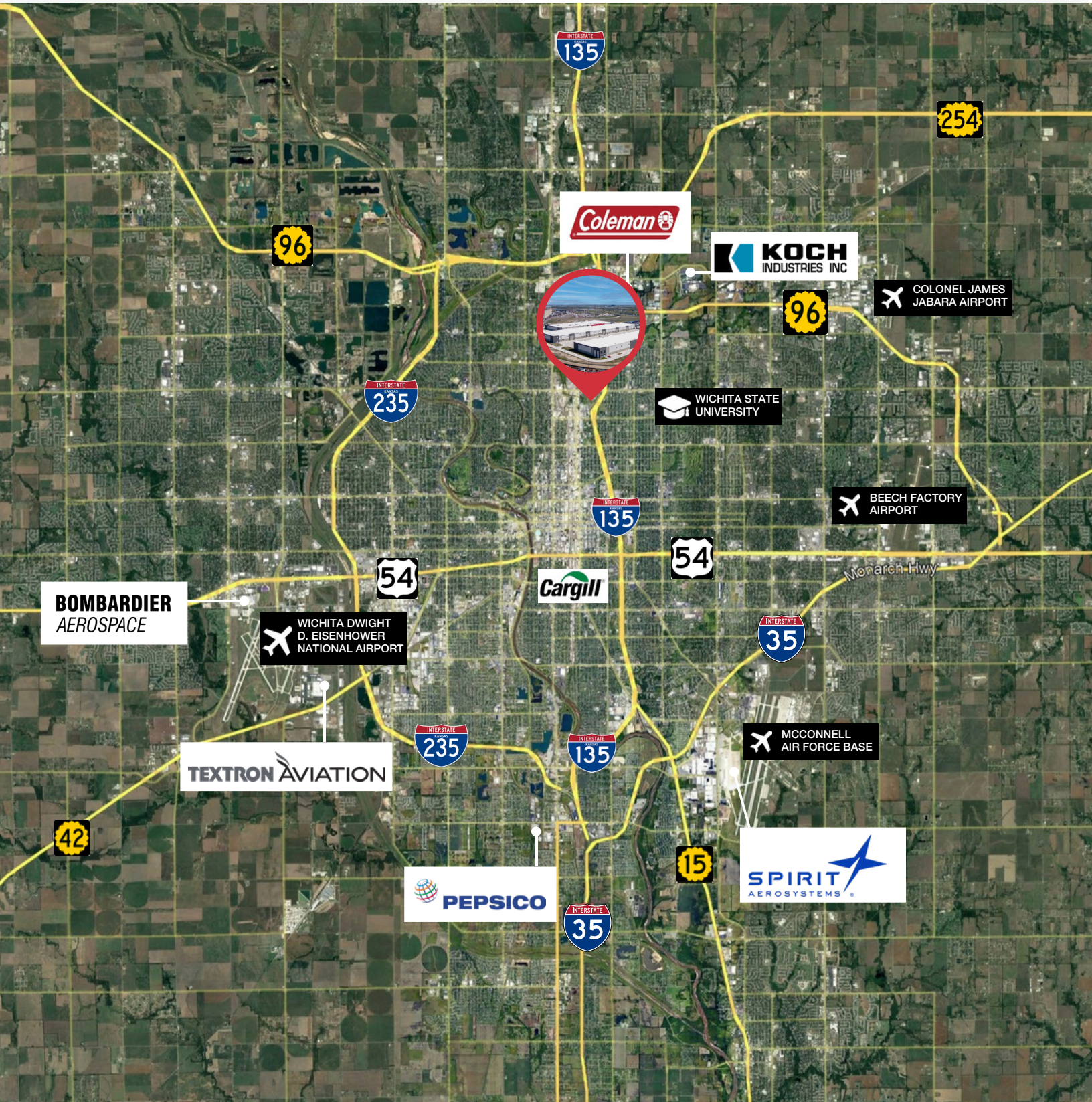


10.3 Acres

13.8 Acres









WICHITA, KANSAS

LOCATION OVERVIEW

Quality of life and livability impacts not only the attitude and productivity of the existing work force, but also the ability of employers to recruit and retain key personnel. Wichita also possesses what many larger metros lack - affordability, short and easy commuting and a high degree of public safety. Money Magazine listed Wichita as one of the Best Big Cities in the Nation to Live, and Kiplinger's listed Wichita as one of the Top 40 Places to Live Among Cities that are Fun, Vibrant and Affordable. Thrillist named Wichita One of the Coolest Cities in America, and Smart Asset ranked Wichita in it's Top 10 Cities for the Best Work-Life Balance.



#1 MANUFACTURING SPECIALIZED REGION IN THE UNITED STATES



#3 ENGINEERING HUB IN THE NATION BEHIND ONLY SILICON VALLEY & HOUSTON, TX



#3 US ADVANCED INDUSTRY HOT SPOT



12% BELOW AVERAGE COST OF LIVING & #4 BEST VALUE CITY FOR RAISING A FAMILY

DEMOGRAPHICS

WICHITA, KANSAS MSA



654,035
TOTAL
POPULATION



330,814
TOTAL LABOR
FORCE

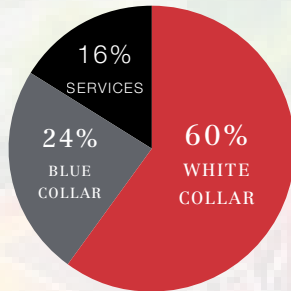


37
MEDIAN AGE



\$60,539
MEDIAN
HOUSEHOLD
INCOME

EMPLOYMENT



WICHITA IS HOME TO 17 UNIVERSITIES & TECHNICAL COLLEGES CONTRIBUTING TO A PIPELINE OF ALMOST 100,000 STUDENTS.



THE REGION'S CENTRAL LOCATION GIVES DIRECT ACCESS TO BOTH COASTS, CANADA & MEXICO. THREE MAJOR RAIL CARRIERS SERVICE THE REGION.



AIR CAPITAL OF THE WORLD - 35% OF ALL GENERAL AVIATION PLANES BUILT IN THE US ARE BUILT IN KANSAS. PLUS, IT'S HOME TO MAJOR COMPANIES LIKE BOMBARDIER & AIRBUS.



KOCH INDUSTRIES, INC. & CARGILL PROTEIN ARE THE TWO LARGEST PRIVATELY HELD COMPANIES IN THE US & BOTH HEADQUARTED IN WICHITA

SOURCE: GREATER WICHITA PARTNERSHIP



1330 E. Douglas Ave.,
Wichita, KS 67214
316 262 0000 tel
naimartens.com



A Region with Top Talent & Opportunity for Growth

Nicknamed the Air Capital of the World, the City of Wichita is the economic hub of southcentral Kansas and northern Oklahoma, and the economy is anchored by a large manufacturing sector, including four aircraft assembly plants. In addition to aircraft manufacturers, the local economy is also supported by healthcare and education. These sectors account for nearly 45 percent of jobs in the area.



#1

U.S. Manufacturing Metro

#3

Engineering Hub in the U.S.

450+

Supplier Network



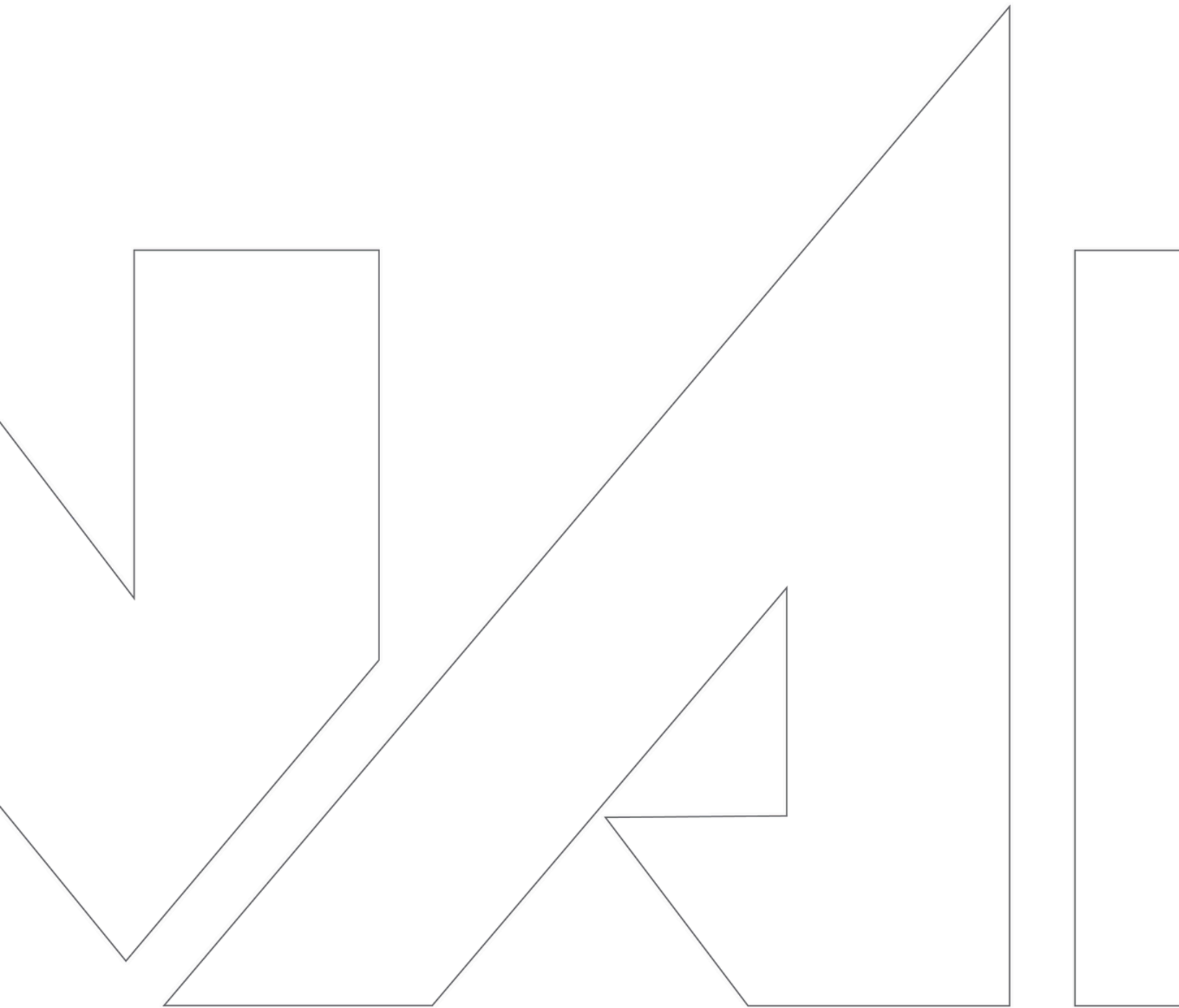
Founded in 1985, the National Institute for Aviation Research (NIAR) at Wichita State University is the largest aerospace research and development academic institution in the nation.



The National Center for Aviation Training (NCAT) is a world-class training facility that provides students the opportunity to receive hands-on, real-world training in general aviation manufacturing and aircraft and power plant mechanics.

Home to Major Companies





NAIMartens

Grant Glasgow, SIOR

O: 316 847 4908

gglasgow@naimartens.com