

www.grayce.us



FOR LEASE

3100 Lee Trevino, El Paso Tx, 79936
OUTPATIENT MEDICAL FACILITY

8,837 SF Available



3100
**EL PASO ORTHOPAEDIC
SURGERY GROUP**
A PROVIDENCE Medical Partners Practice

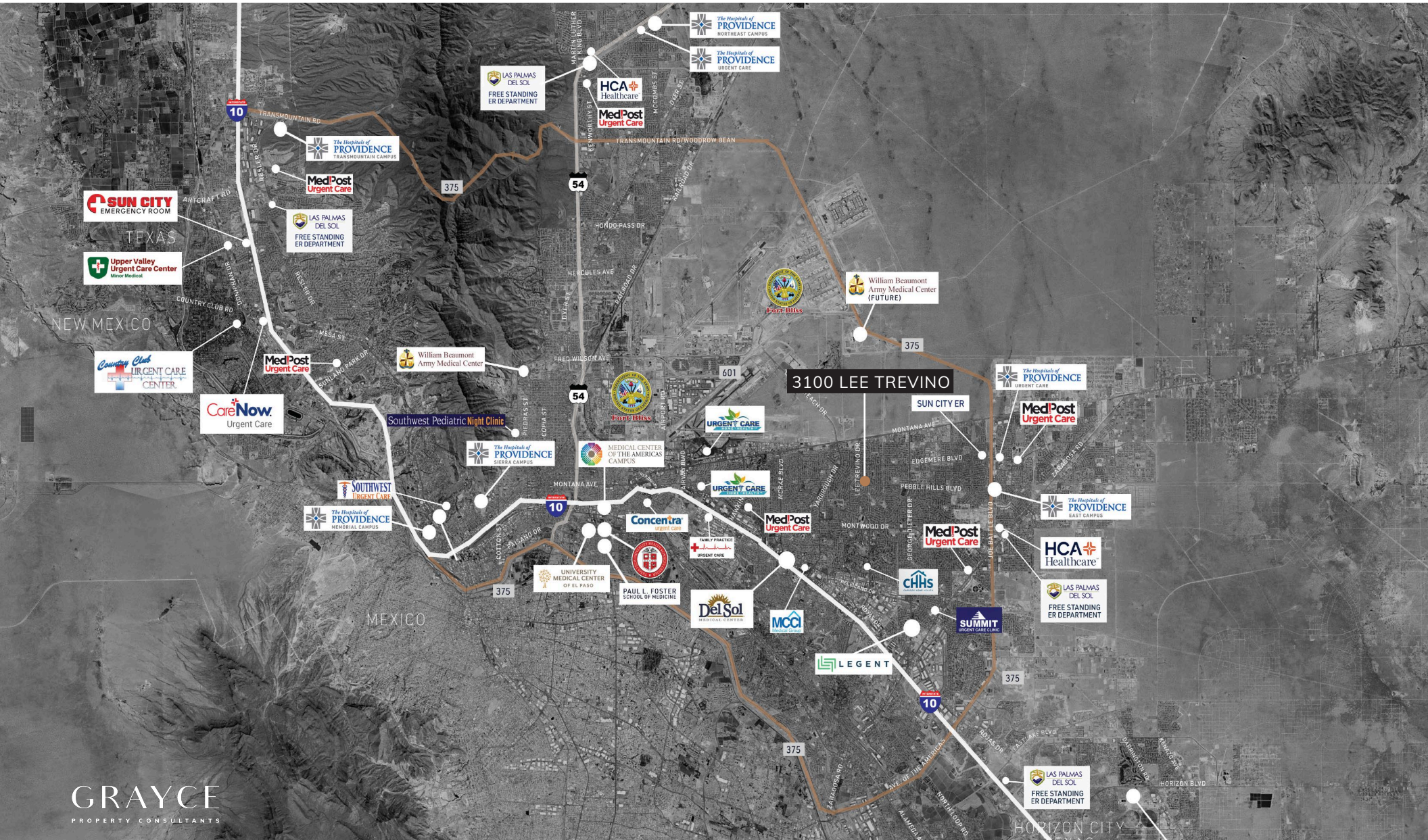
GRAYCE
PROPERTY CONSULTANTS

Sarah Dominguez
President
915-433-0800
sarah@grayce.us

Nadia Baem
Commercial Agent
915-316-2345
nadia@grayce.us



EL PASO HOSPITAL AERIAL





SITE AERIAL



SITE SPECIFICATIONS

# of stories	1
NNN Base Rent	Call for Rates
Type of Business	Outpatient Medical Facility
Zoning	C-1
Building Class	B
Building Size	75,484 SF

AVAILABLE SPACE FOR LEASE
8,837 SF



HIGHLIGHTS

Situated at a strategic crossroads, 3100 Lee Trevino offers unparalleled visibility and accessibility, making it an ideal choice for medical professionals seeking a central and convenient location.

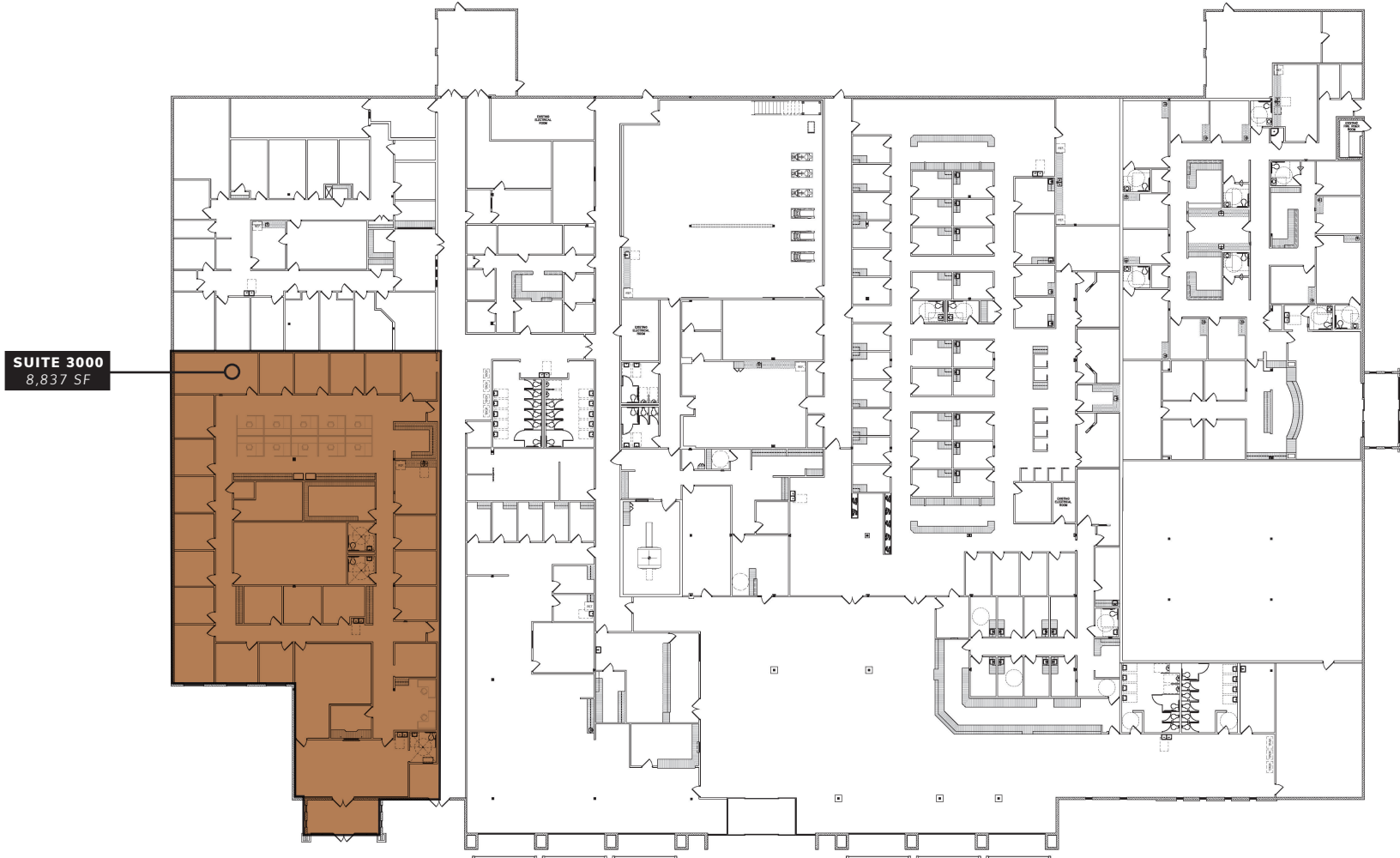
The property provides ample on-site parking to accommodate the needs of patients, visitors, and staff, ensuring hassle-free accessibility.

From private practice suites to specialized treatment rooms, the property offers versatile spaces that can be tailored to meet the specific requirements of various medical specialties.



FLOORPLAN

AVAILABLE



www.grayce.us



FOR LEASE

3100 Lee Trevino, El Paso Tx, 79936

OUTPATIENT MEDICAL FACILITY

8,837 SF Available



3100
**EL PASO ORTHOPAEDIC
SURGERY GROUP**
A PROVIDENCE Medical Partners Practice

GRAYCE
PROPERTY CONSULTANTS

Sarah Dominguez
President
915-433-0800
sarah@grayce.us

Nadia Baem
Commercial Agent
915-316-2345
nadia@grayce.us