

360 Pioneer Way

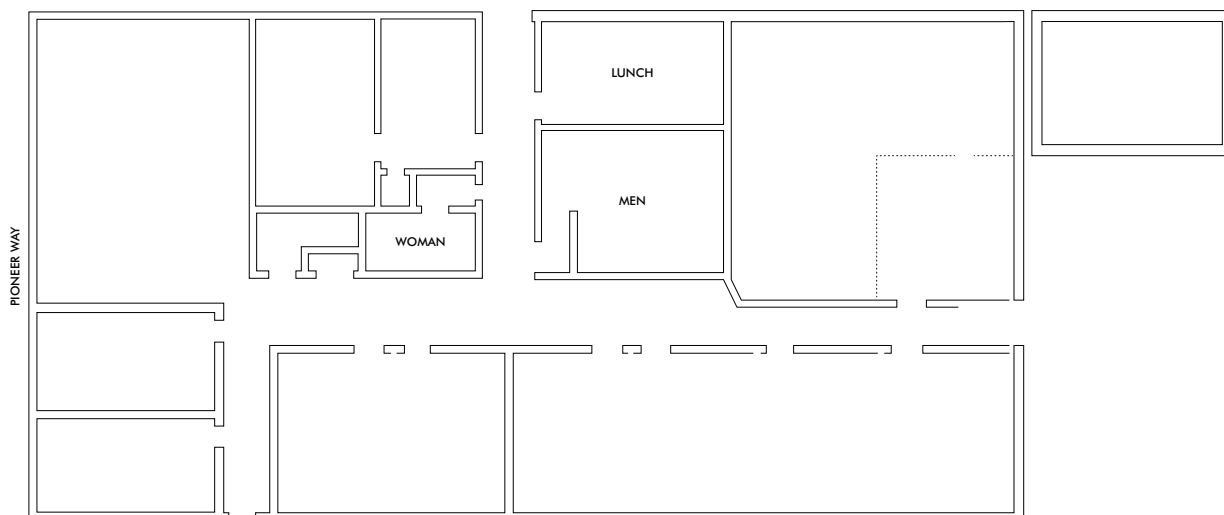
Mountain View, CA 94041

±1.74 Acres or ±75,794 SF of land

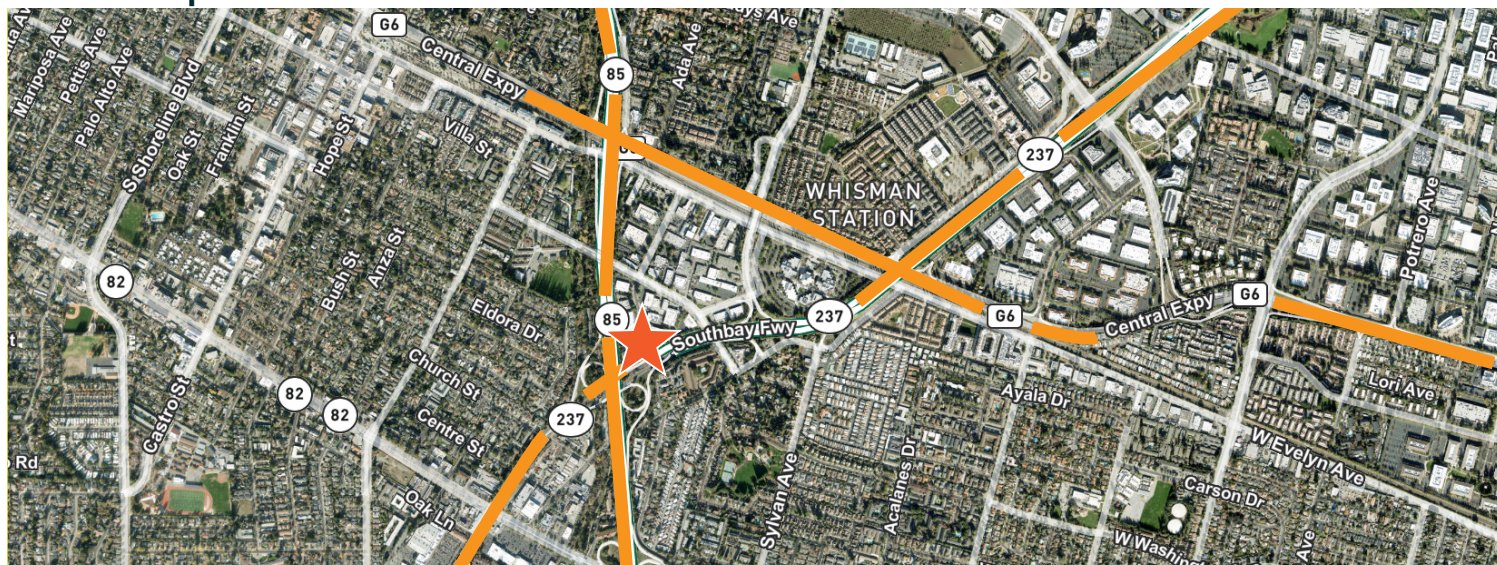


- + ±1.74 Acres or ±75,794 SF
- + ±5,500 SF Single Story Office
- + 400 Amps / 120/208 V / 3 Phase
- + FAR ±7%
- + Zoning MM = General Industrial
- + General Plan High Intensity Office
- + Secured Paved Yard with Security Lighting
- + ±120 Parking Spaces
- + 800 SF Recycling Enclosure
- + Great Freeway Access to Hwys 237, 85, 101, 280 and Central Expwy
- + Parcel ID APN 160-66-004

Floor Plan



Aerial Map



Contact Us

Jim Kovaleski

Senior Vice President
+1 408 832 5885
jim.kovaleski@cbre.com

Craig Kovaleski

Senior Vice President
+1 408 761 7070
craig.kovaleski@cbre.com

© 2026 CBRE, Inc. All rights reserved. This information has been obtained from sources believed reliable, but has not been verified for accuracy or completeness. You should conduct a careful, independent investigation of the property and verify all information. Any reliance on this information is solely at your own risk. CBRE and the CBRE logo are service marks of CBRE, Inc. All other marks displayed on this document are the property of their respective owners, and the use of such logos does not imply any affiliation with or endorsement of CBRE. Photos herein are the property of their respective owners. Use of these images without the express written consent of the owner is prohibited.