

COMMERCE COMMONS

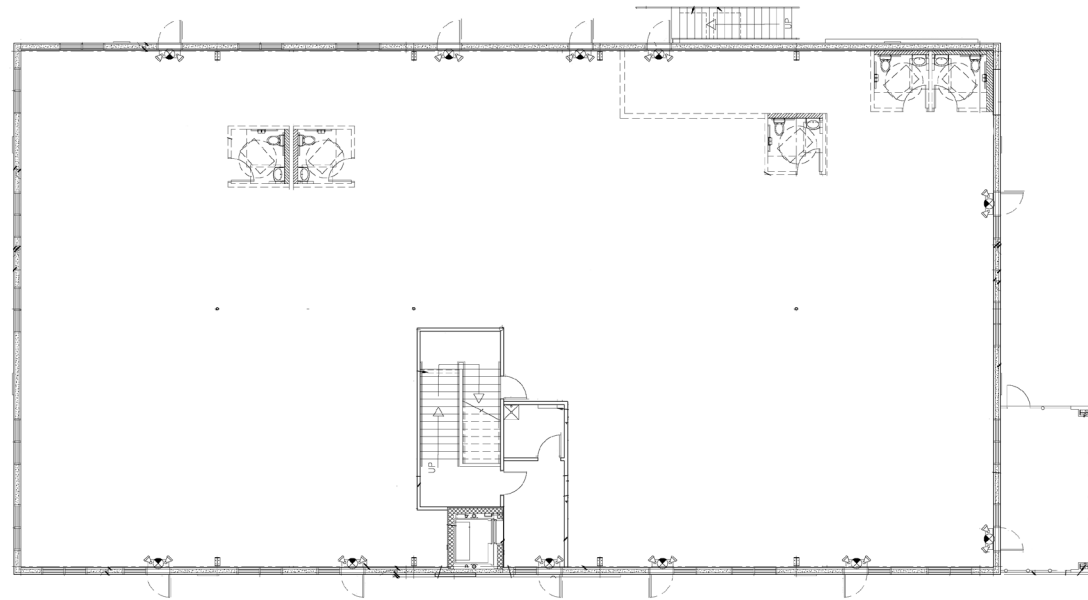
2350 COMMERCE PARKWAY, BUNNELL, FL 32110



2 FLOORS AVAILABLE FOR LEASE
±2,000 - 18,000 SF

PROPERTY OVERVIEW

- State-of-the-art Class A Medical Office/Office Development
- Planned on-site café located on the ground floor, featuring an inviting outdoor patio
- Rare opportunity to lease space in the newest Class A professional Building constructed in Bunnell
- Premier civic location next door to the new City Hall, directly across from the new library and public venue space, and just steps from the new Sheriff's Office
- Positioned within the City of Bunnell's long-term vision to transform this corridor into the city's future "City Center"



SAMPLE FLOORPLATE*

PROPERTY HIGHLIGHTS

- Building Size: $\pm 18,000$
- Space Available: $\pm 2,000 - 18,000$ SF
- Floorplates: $\pm 9,000$ and $\pm 18,000$ SF
- Core and shell delivery: est. Q2 2027

NEARBY AMENITIES



LOCAL DRIVE TIMES:

Advent Health Palm Coast ER	8 min
Flagler Executive Airport	5 min
Downtown Bunnell	3 min
Flagler County Library	1 min
Flagler County Sheriff's Office	1 min

DAVID J. HILLEGAS
 Managing Director
 Direct: +1 904 380 8343
 david.hillegas@cushwake.com

FRANCESCA M. NEUMAN
 Senior Associate
 Direct: +1 904 380 4111
 francesca.neuman@cushwake.com

