

FOR LEASE

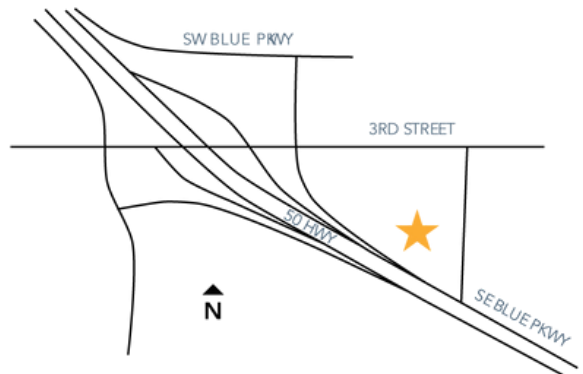
*Shopping Center*  
LEE'S SUMMIT, MISSOURI

# Southside PLAZA

Brain Group is pleased to offer space at Southside Plaza in Lee's Summit available for lease immediately. The shopping center is located just off 50 highway with up to 63,300 AADT. The vacant spaces offer the potential for a multitude of uses with great cotenancy. The surrounding area is close to downtown Lee's Summit, Cerner's new campus and the New Longview neighborhood.



Square Footage	2,800 SF - 4,900 SF
Rates	\$15/Square foot, NNN
TI	Negotiable
Visibility	High (near highway)
Status	Facade Renovation recently completed
Tenants	National, close proximity
Parking	3+ per 1,000 square feet
Lease Term	Negotiable
Signage	Pylon and storefront available



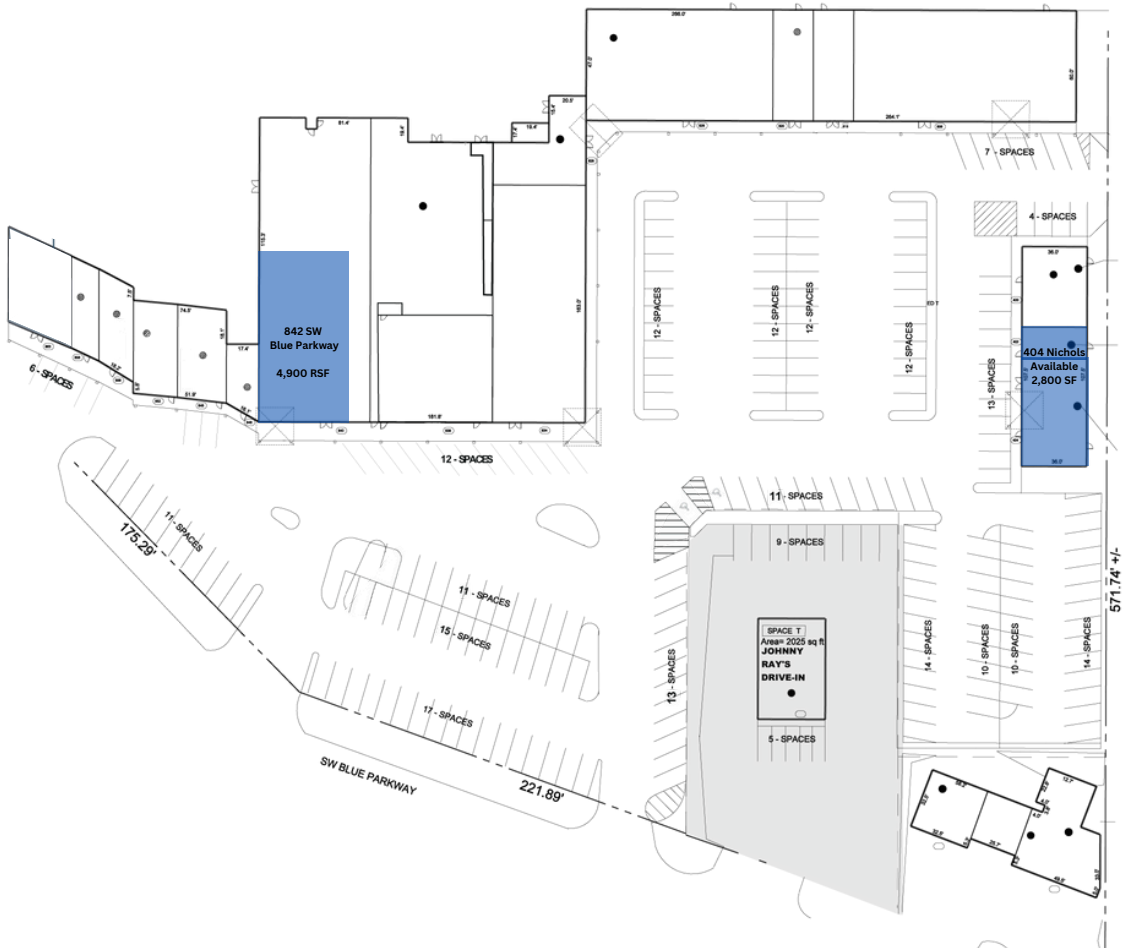
LEASING INFORMATION:  
Andrew Brain, 816.281.5900  
[abrain@braingroup.co](mailto:abrain@braingroup.co)

 **BRAIN GROUP**

FOR LEASE

*Shopping Center*  
LEE'S SUMMIT, MISSOURI

# Southside P L A Z A



LEASING INFORMATION:  
Andrew Brain, 816.281.5900  
[abrain@braingroup.co](mailto:abrain@braingroup.co)

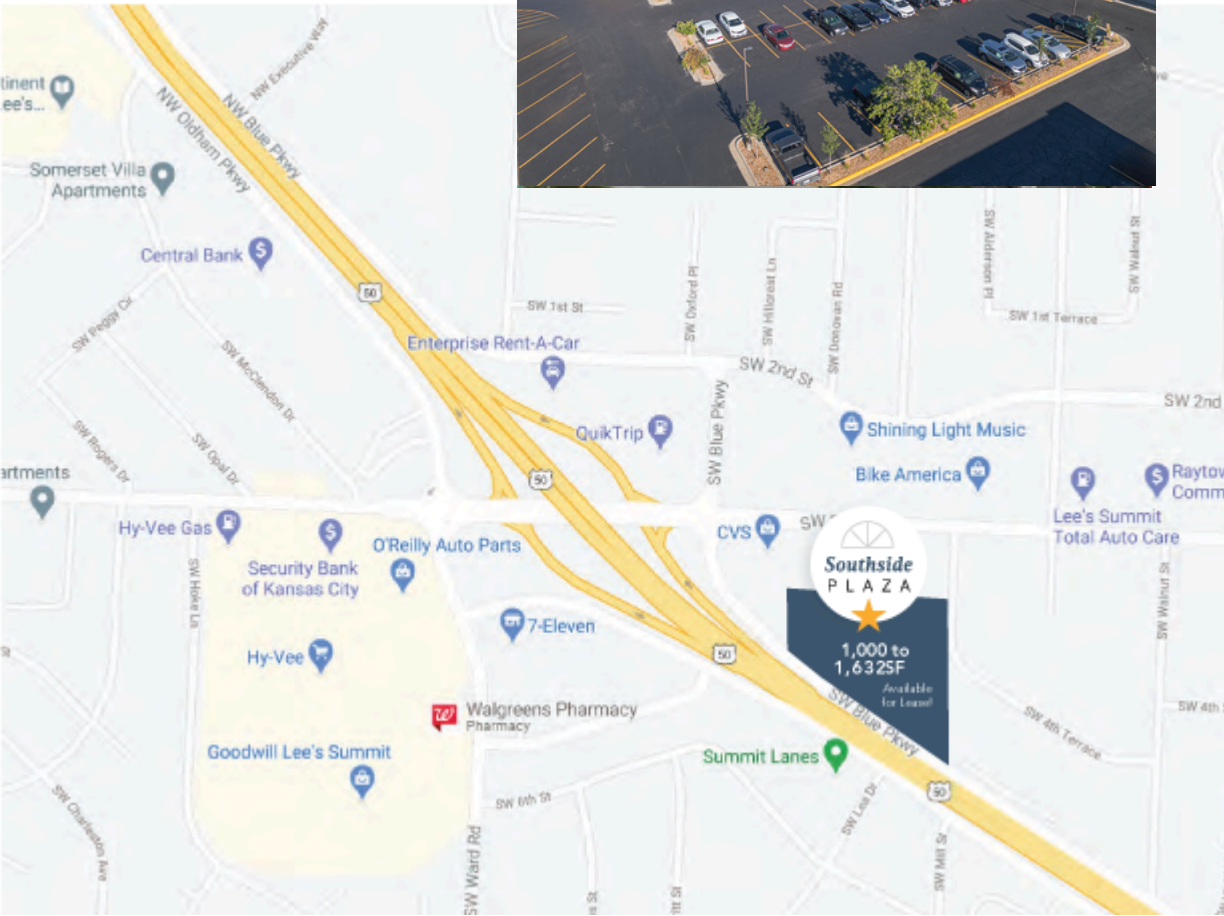


BRAIN GROUP

FOR LEASE

*Shopping Center*  
LEE'S SUMMIT, MISSOURI

# Southside PLAZA



LEASING INFORMATION:  
Andrew Brain, 816.281.5900  
[abrain@braingroup.co](mailto:abrain@braingroup.co)



BRAIN GROUP