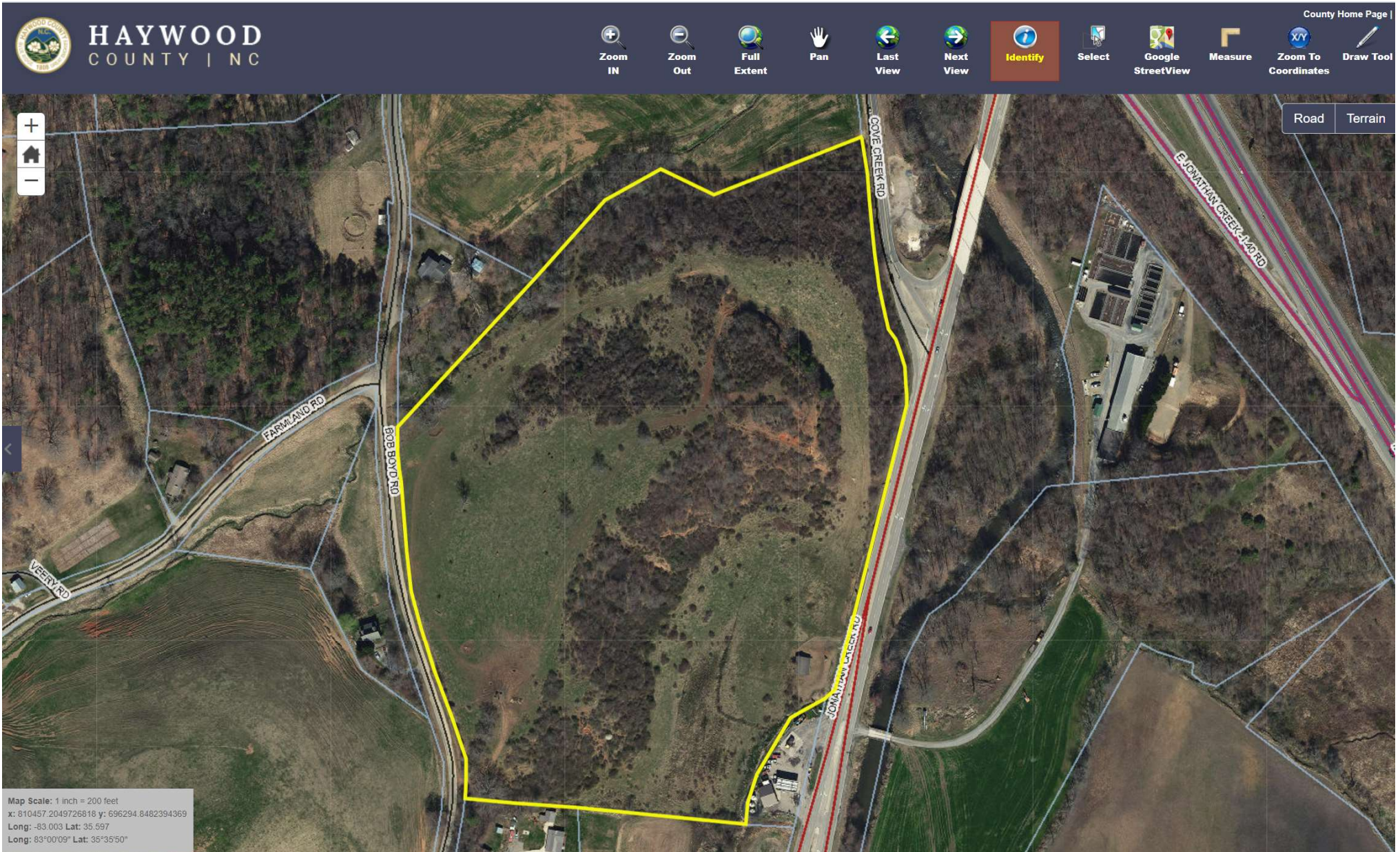


CATALOOCHEE GATEWAY – 30.2 AC DEVELOPMENT SITE

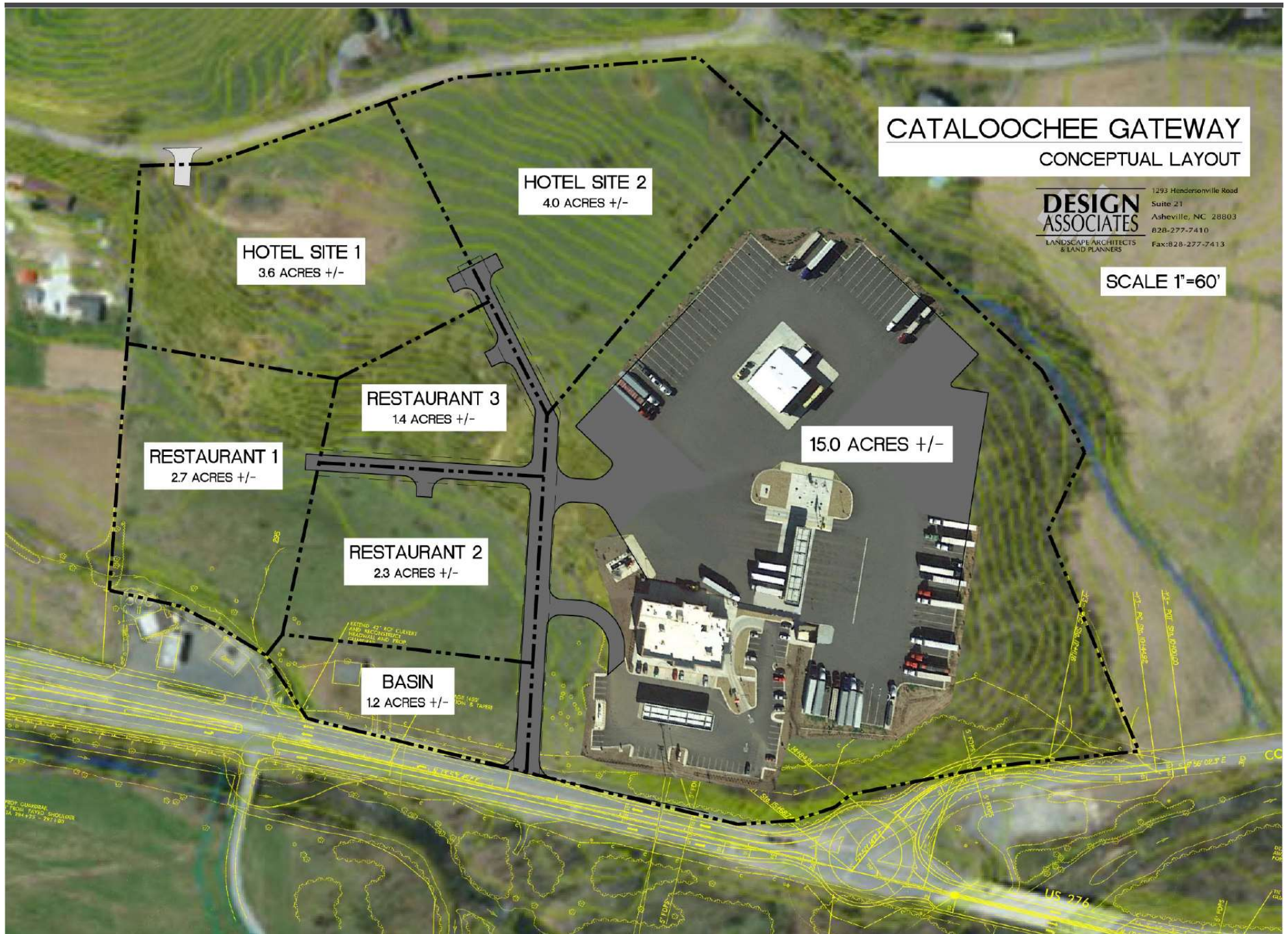
EXHIBIT A

KRB MLM

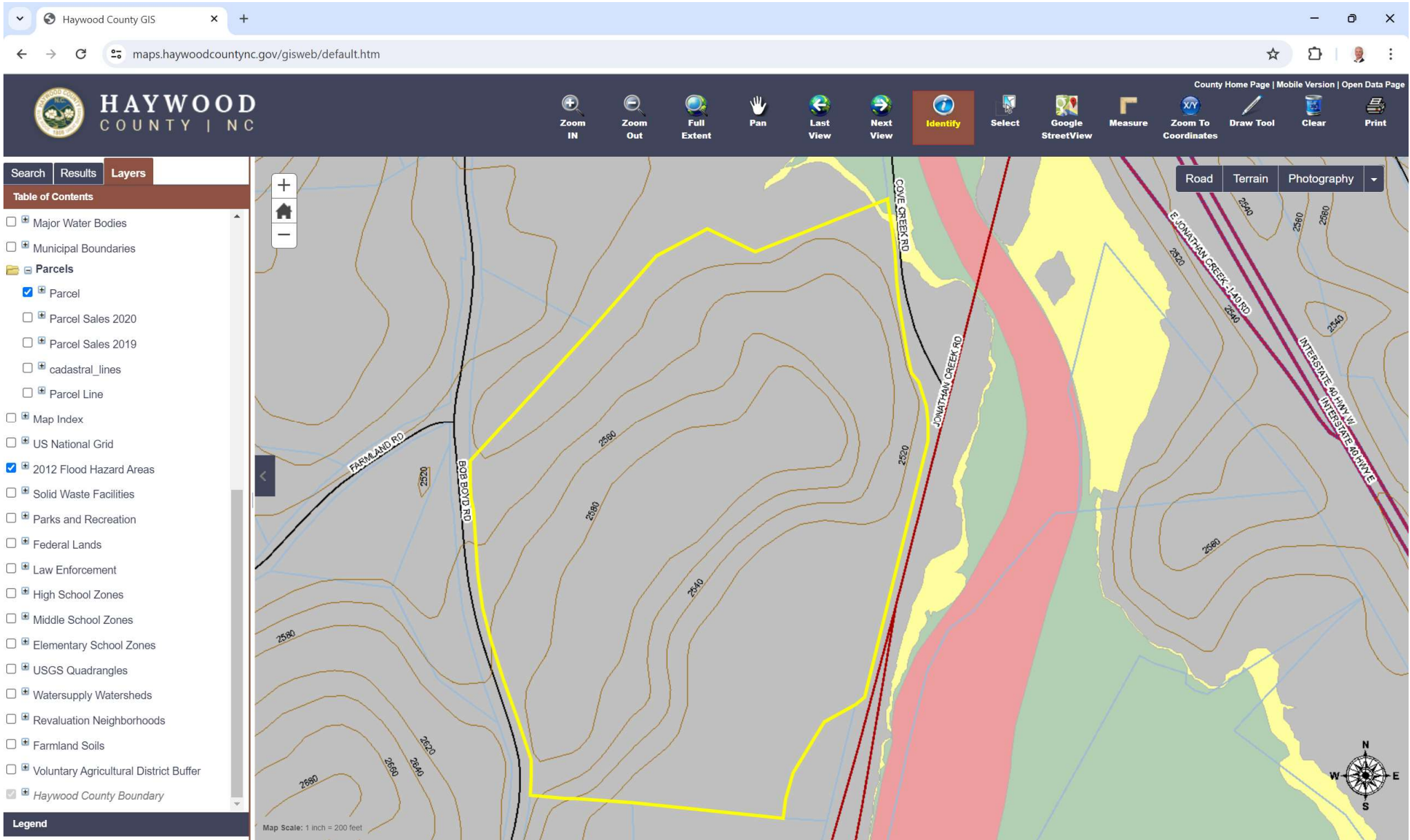


5352 Jonathan Creek, Waynesville, NC - PIN 8609-86-3722

CATALOOCHEE GATEWAY - CONCEPTUAL LAYOUT

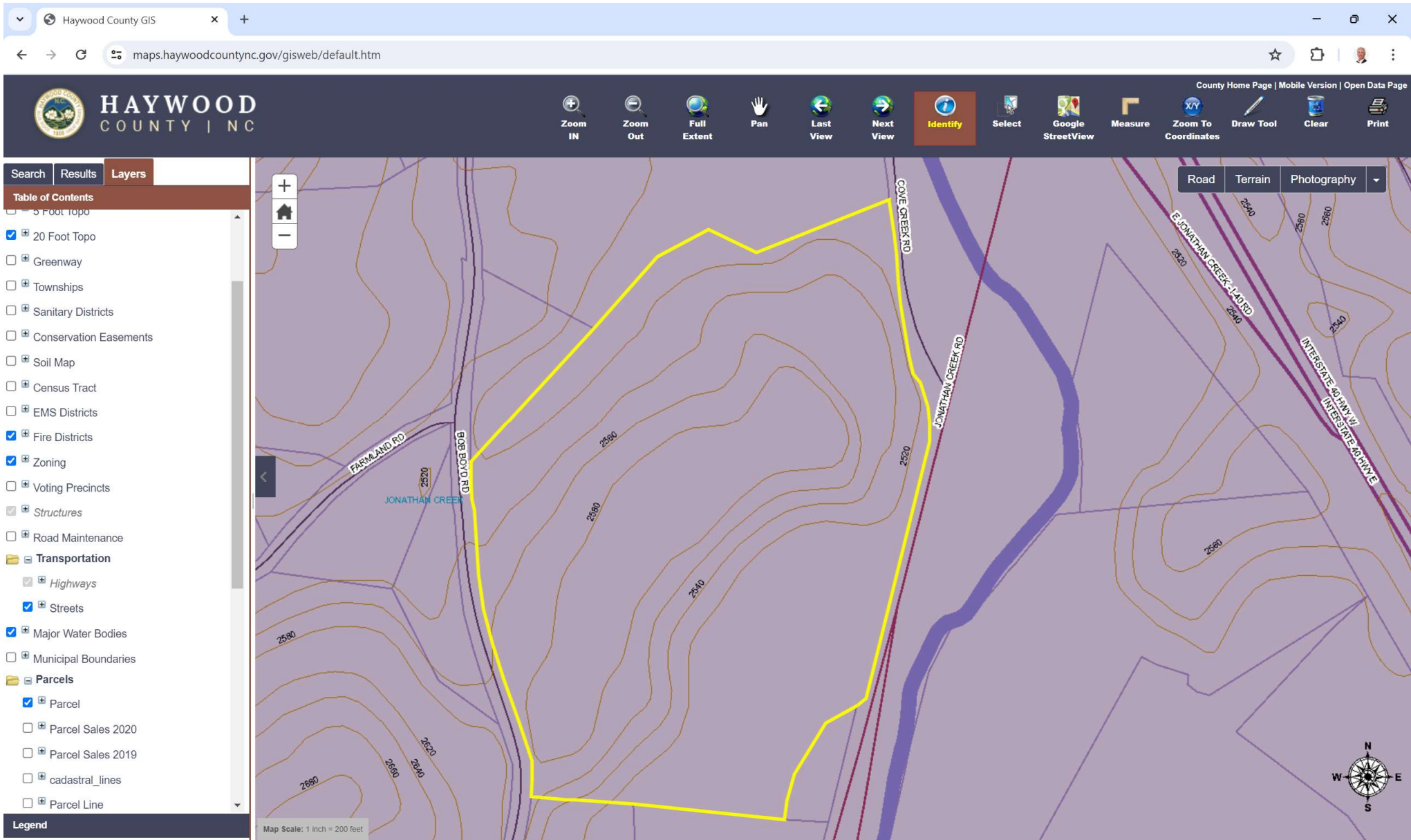


CATALOOCHEE GATEWAY



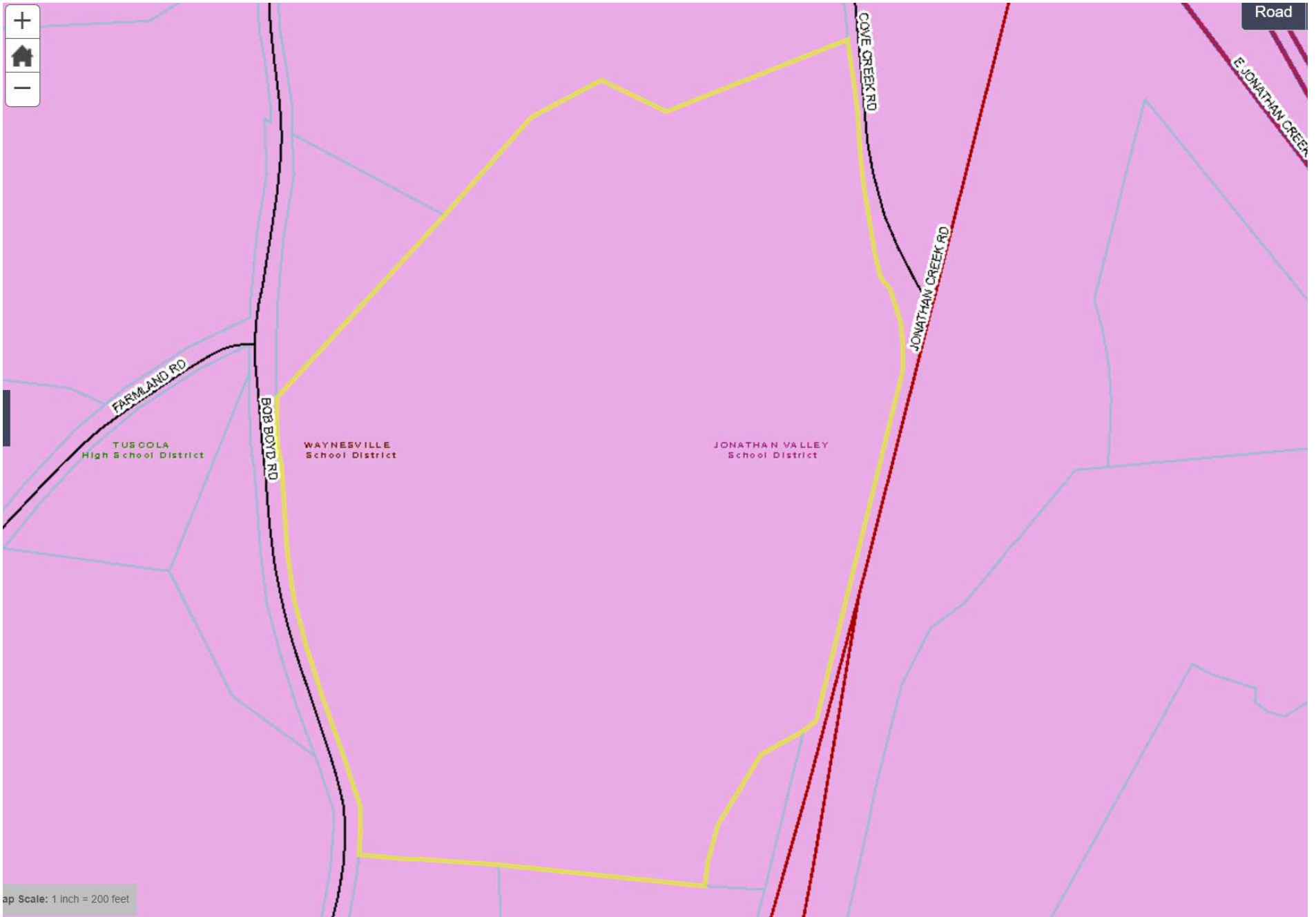
20' CONTOURS & 2012 FEMA HAZARD AREA

CATALOOCHEE GATEWAY



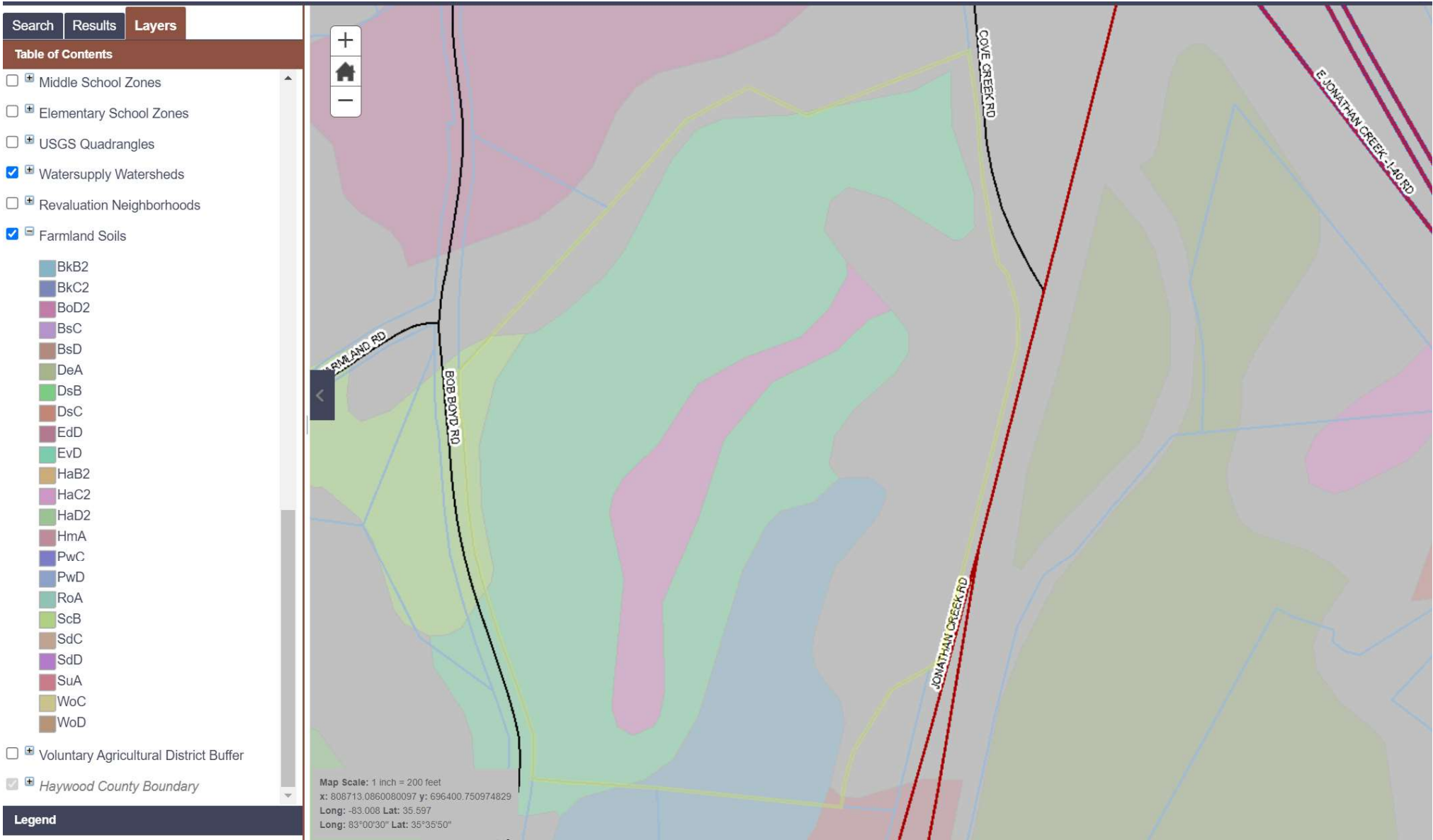
MAJOR WATER BODIES AND FIRE DISTRICT

CATALOOCHEE GATEWAY



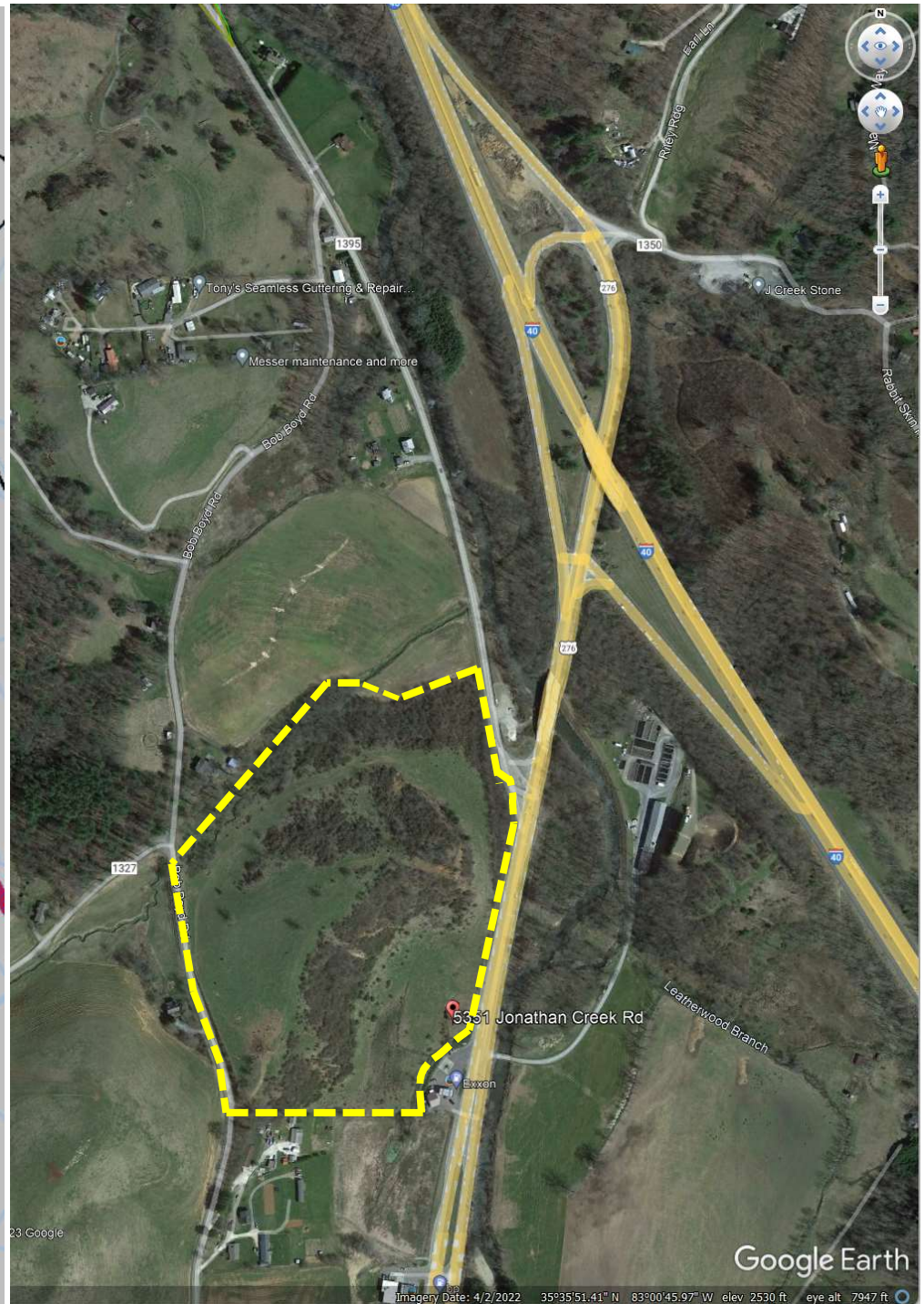
SCHOOL DISTRICTS

CATALOOCHEE GATEWAY



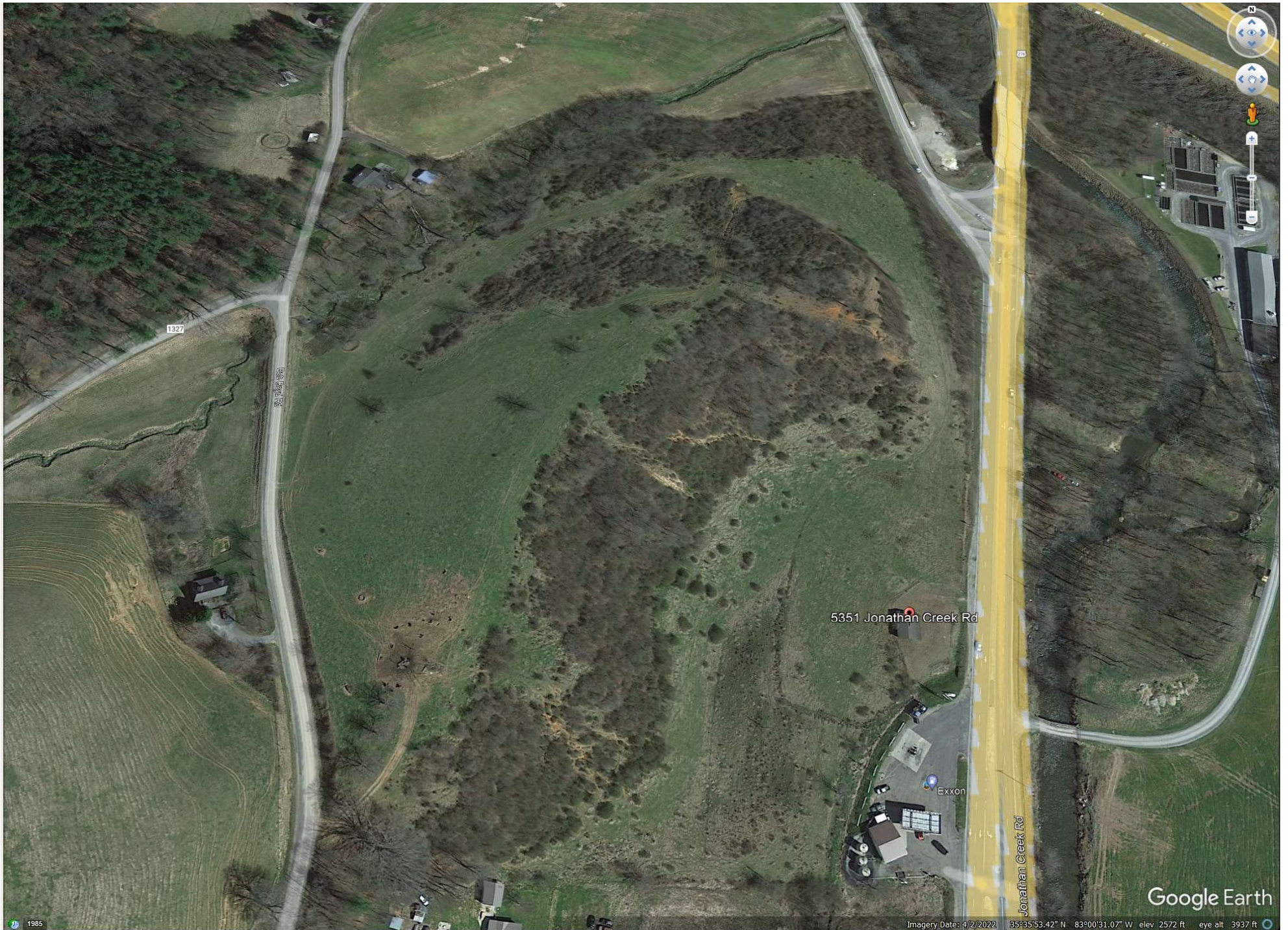
SOILS

CATALOOCHEE GATEWAY

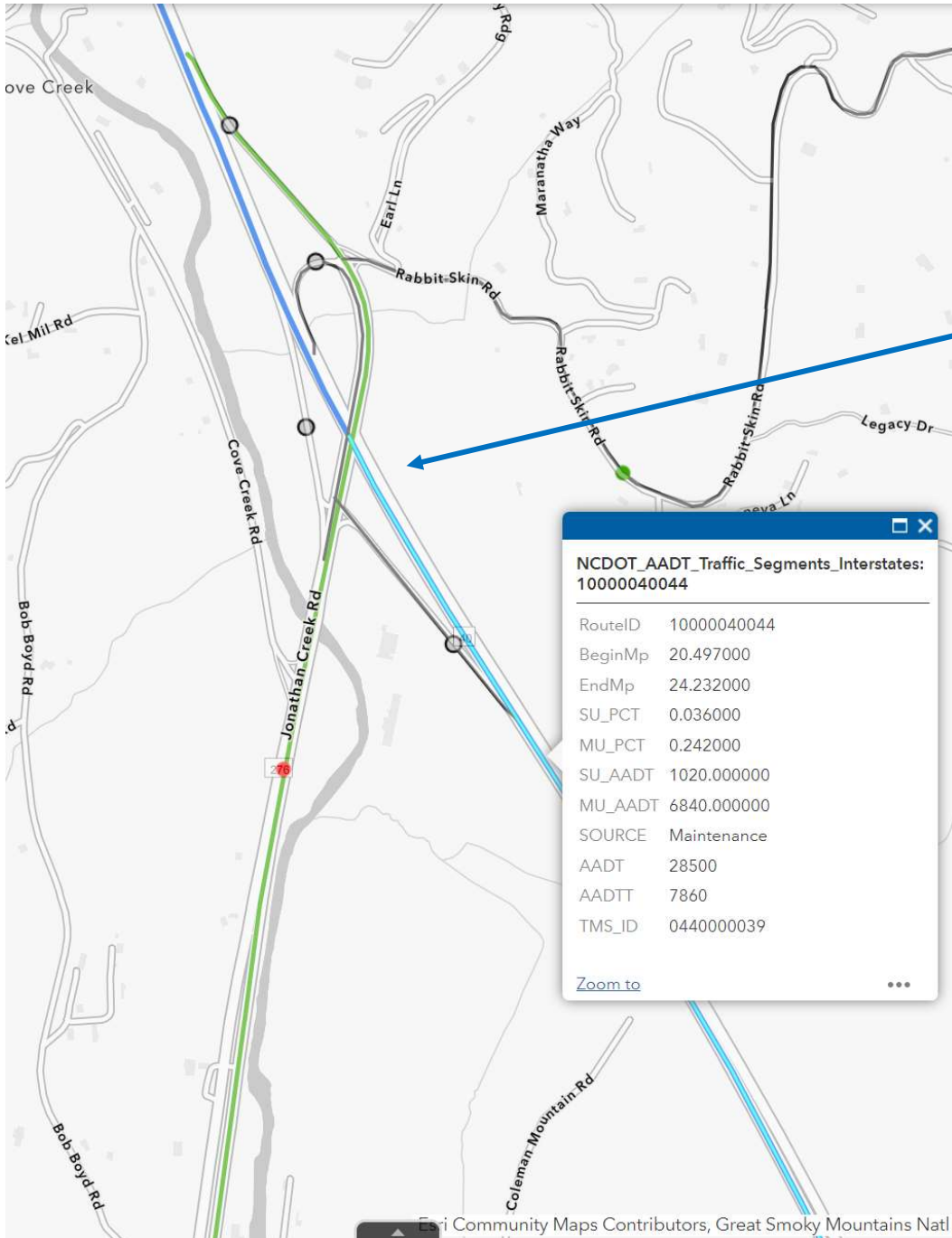


INTERSTATE 40 – EXIT #20 PROXIMITY (CONSIDERED THE LAST DEVELOPABLE SITE BEFORE THE TN STATE LINE)

CATALOOCHEE GATEWAY



CATALOOCHEE GATEWAY

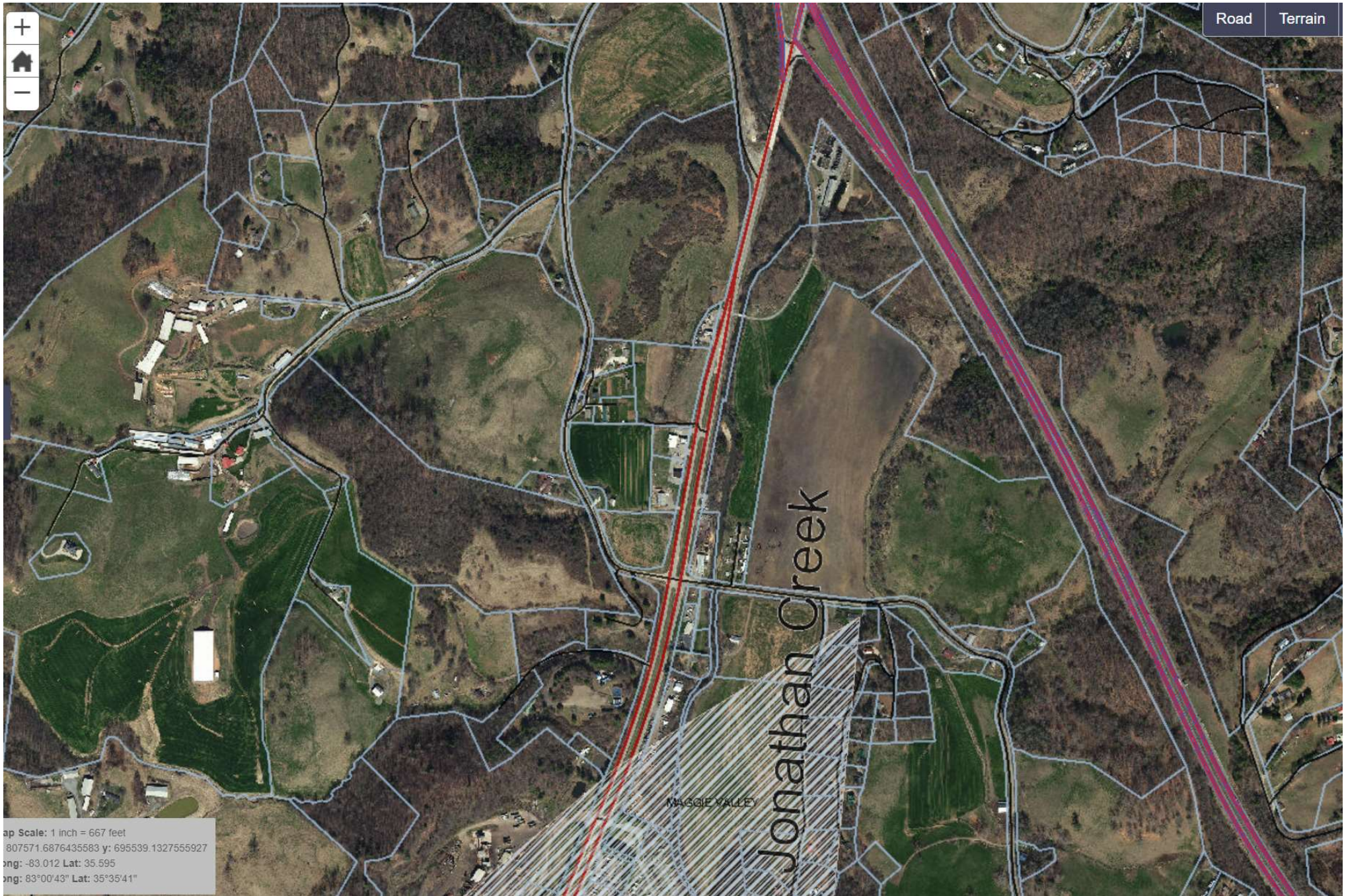


Interchange Exits (From TN State Line W)

7	Harmon Den
15	Fines Creek
20	US 276 - Waynesville, Maggie Valley
24	NC 209 - Lake Junaluska
27	US 19-23-74 - Clyde, Waynesville
31	NC 215, Canton
33	Newfound Rd, (Haywood County Line)
37	Candler Exit (Buncombe County Line)
44	US 19-23, Enka Candler
46A	I-26, US 74, Truck US 64
46B	Asheville, I-26 & I-240
47	NC 191, West Asheville Farmers Market
50	US 25, S Asheville, Biltmore House
51	US 25A, Sweeten Creek Rd
53	US 74A, I-240, Blue Ridge Parkway
55	US 70, Swannanoa, VA Hospital

NCDOT – AADT TRAFFIC COUNT AT EXIT 20 – INTERSTATE 40

CATALOOCHEE GATEWAY



Map Scale: 1 inch = 667 feet
x: 807571.6876435683 y: 695539.1327555927
Longitude: -83.012 Lat: 35.595
Longitude: 83°00'43" Lat: 35°35'41"

MAGGIE VALLEY SANITARY DISTRICT