

9046 Lindblade Street

THE ARCHITECTURE OF INSPIRATION

Located in the dynamic Hayden Tract community, The Staircase is a one-of-a-kind creative space that redefines the workplace experience. This standalone architectural masterpiece features sandblasted wood ceilings, polished concrete floors, glass-walled offices and a private outdoor patio, providing a canvas for bold ideas and inspired collaboration.

Positioned directly across from Amazon Studios and Sony Pictures Animation, and just steps from Erewhon and Downtown Culver City's buzzing dining and retail scene, The Staircase is where creativity thrives and boundaries are pushed.



AVAILABLE NOW: 7,871 RSF

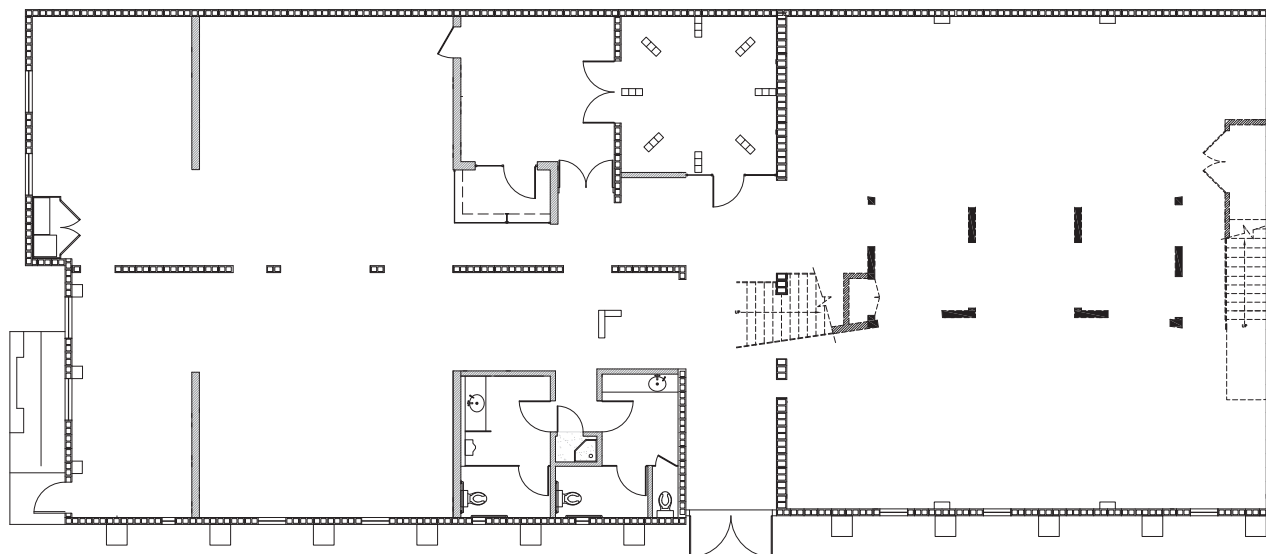


DESIGNED TO DEFINE WHAT'S NEXT

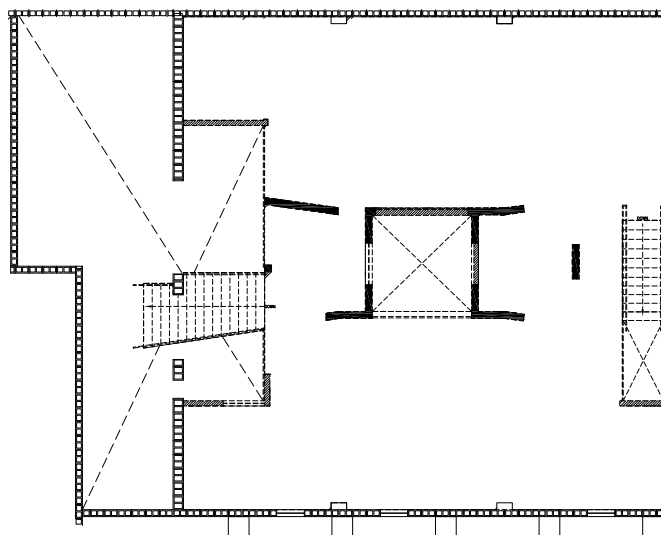
With two stories of expansive floorplans, glass-walled offices, and distinct areas for collaboration, The Staircase fosters creativity and productivity at every level.

AVAILABLE NOW: 7,871 RSF

GROUND FLOOR



SECOND FLOOR



THE FOREFRONT OF LA'S CREATIVE SCENE

The Staircase empowers you to thrive in the creative epicenter of Westside LA, surrounded by industry leaders like Amazon Studios and Sony Pictures Animation. This dynamic location offers a hub of inspiration, providing endless opportunities to connect and collaborate with top minds in tech, media, and entertainment.



BALLONA CREEK BIKE PATH

METRO EXPO LINE

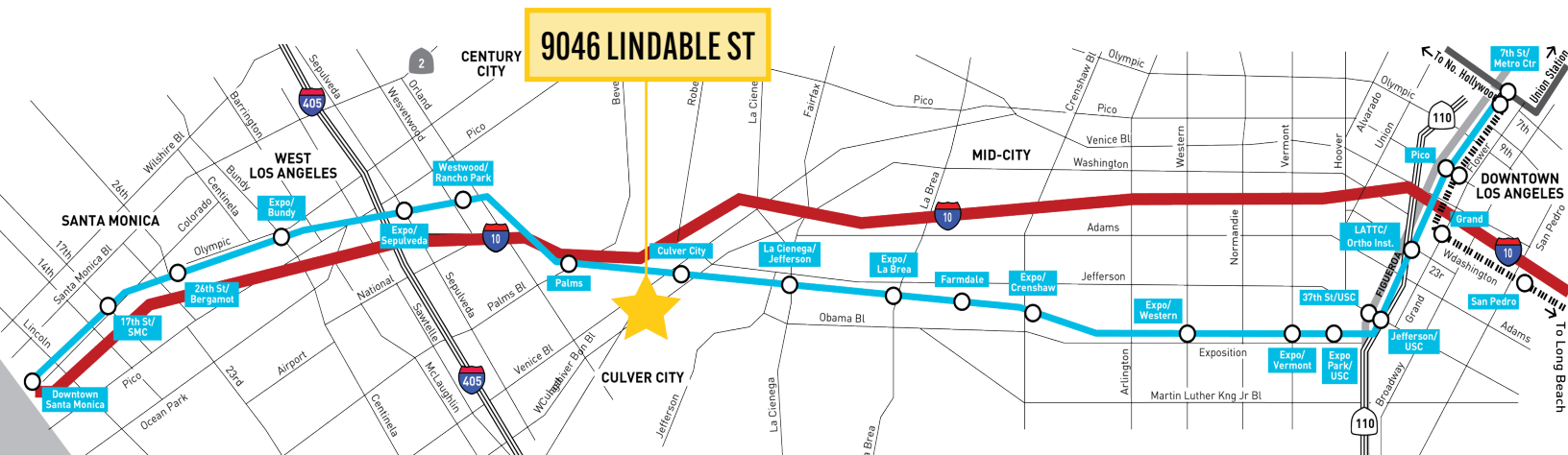
PARKING RATIO: 2:1,000 RSF

\$175 UNRESERVED

YOUR LINK TO THE CITY



With easy access to I-405 and I-10, the Staircase puts you minutes from West Los Angeles, Santa Monica, and Century City, streamlining your daily commute. The nearby Ballona Creek Bike Path, a favorite among walkers, runners, and bikers, offers a scenic route straight to Santa Monica Bay, connecting you to the best of the Westside.



For More Information, Please Contact:

GABRIEL BROWN

+1 310 435 4344
gabe.brown@jll.com
CA Lic. 01441920

JOSH BERNSTEIN

+1 310 795 5947
josh.bernstein@cushwake.com
CA Lic. 01828093

ALEXA DELAHOOKE

+1 626 340 5391
alexa.delahooke@cushwake.com
CA Lic. 02091695

©2025 Cushman & Wakefield. All rights reserved. The information contained in this communication is strictly confidential. This information has been obtained from sources believed to be reliable but has not been verified. NO WARRANTY OR REPRESENTATION, EXPRESS OR IMPLIED, IS MADE AS TO THE CONDITION OF THE PROPERTY (OR PROPERTIES) REFERENCED HEREIN OR AS TO THE ACCURACY OR COMPLETENESS OF THE INFORMATION CONTAINED HEREIN, AND SAME IS SUBMITTED SUBJECT TO ERRORS, OMISSIONS, CHANGE OF PRICE, RENTAL OR OTHER CONDITIONS, WITHDRAWAL WITHOUT NOTICE, AND TO ANY SPECIAL LISTING CONDITIONS IMPOSED BY THE PROPERTY OWNER(S). ANY PROJECTIONS, OPINIONS OR ESTIMATES ARE SUBJECT TO UNCERTAINTY AND DO NOT SIGNIFY CURRENT OR FUTURE PROPERTY PERFORMANCE.
COE-PM-West-09.8.2025

