



FOR LEASE – 10,000 +/- Sq. Ft. INDUSTRIAL WAREHOUSE 30D MILL STREET HEALDSBURG, CA 95492

Northern California's Premier Commercial Real Estate Firm



The above information, while not guaranteed, has been secured from sources we believe to be reliable. This is not an offer to sell or lease and is subject to change or withdrawal. Any interested party should verify the status of the property and the information herein.



SITE SUMMARY



PRICING

Base Rent Price: \$0.81/Sq. Ft. Base Rent
 \$0.15/Sq. Ft. NNN Costs

BUILDING

Building Size: 10,000+/- Sq. Ft.

Construction Type / Sliding: Metal

Grade Level Loading Doors: 3 (14' x 12') on the East Side
 1 (14' x 19') on the West Side

Ceiling Height: Approximately 18' clear height

Fire Suppression: Yes, Sprinklered

Power: 400 Amps 3-Phase

SITE

APN: 002-251-017

Size: 35,719+/- Acres

Zoning: IL (Light Industrial)

Water & Sewer: City of Healdsburg

Gas & Electric: City of Healdsburg

30D Mill Street

This standalone industrial building holds 10,000 +/- Sq. Ft. in the Plum Industrial Park located in central Healdsburg. The building offers 4 grade level doors, fire suppression sprinklers, fully insulated, and power supply of 400 amps 3 phase. The space offers a large open warehouse area with approximately 18' clear height. The existing occupant built out 768 sq. ft. of ground floor production area adjacent to the original office area, which is currently being used as a break room. Located on the ground floor there is 228 +/- Sq. Ft. of ground floor office, and two restrooms. The second floor has an office with 400 +/- Sq. Ft. The building is zoned "Industrial", which allows for a variety of industrial uses. The Plum Business Park consists of multiple buildings, which may allow for future expansion.

The above information, while not guaranteed, has been secured from sources we believe to be reliable. This is not an offer to sell or lease and is subject to change or withdrawal. Any interested party should verify the status of the property and the information herein.



SITE PLAN



The above information, while not guaranteed, has been secured from sources we believe to be reliable. This is not an offer to sell or lease and is subject to change or withdrawal. Any interested party should verify the status of the property and the information herein.



PHOTOS



Warehouse Space



Warehouse Space



Warehouse Space

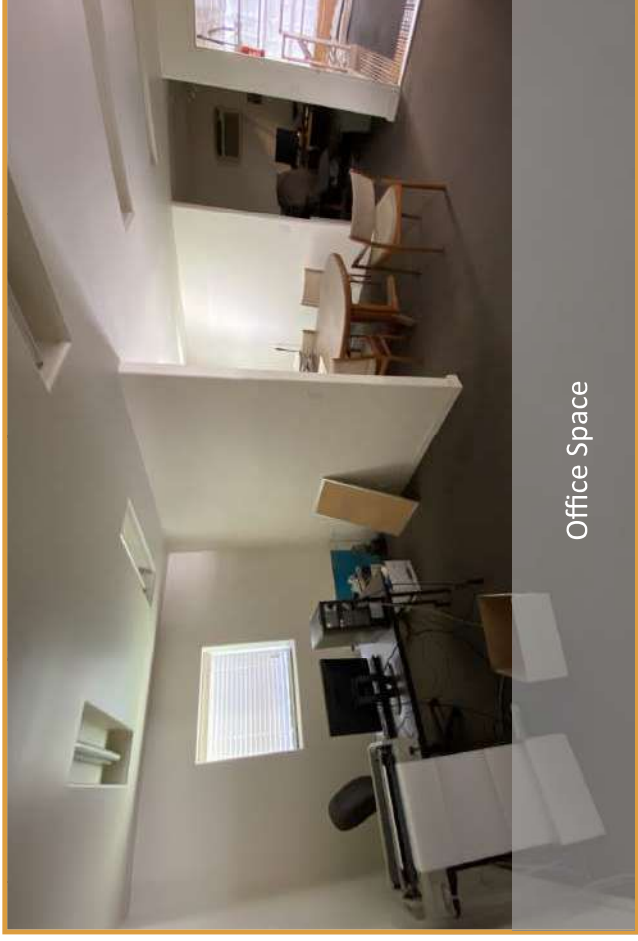
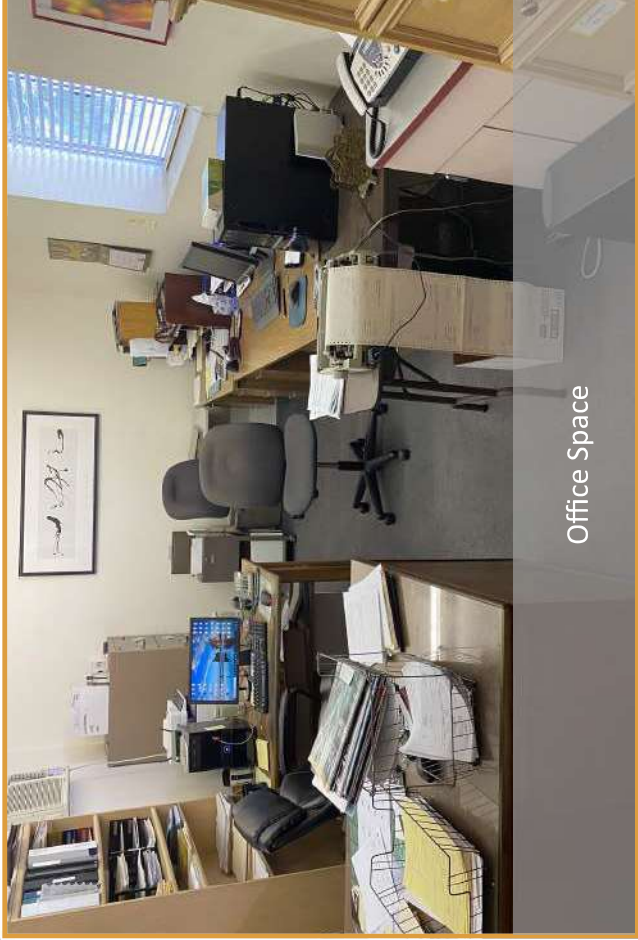


Warehouse Space

The above information, while not guaranteed, has been secured from sources we believe to be reliable. This is not an offer to sell or lease and is subject to change or withdrawal. Any interested party should verify the status of the property and the information herein.



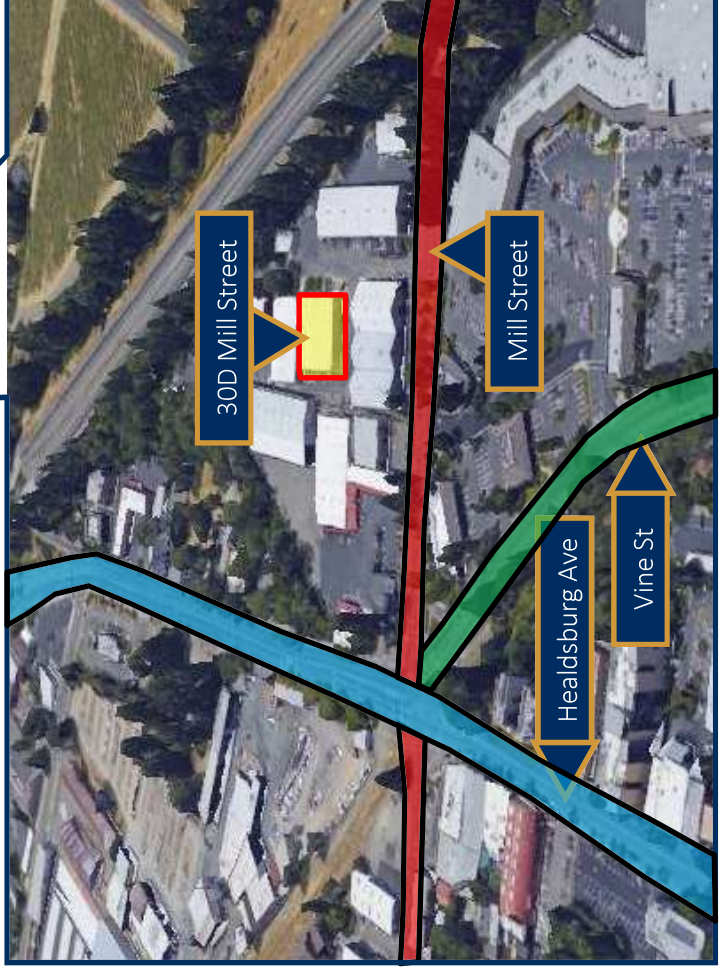
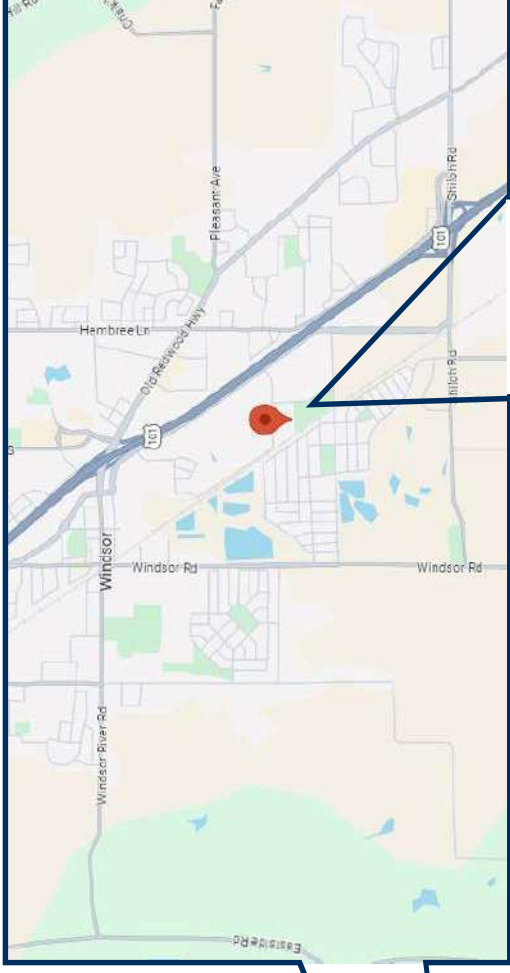
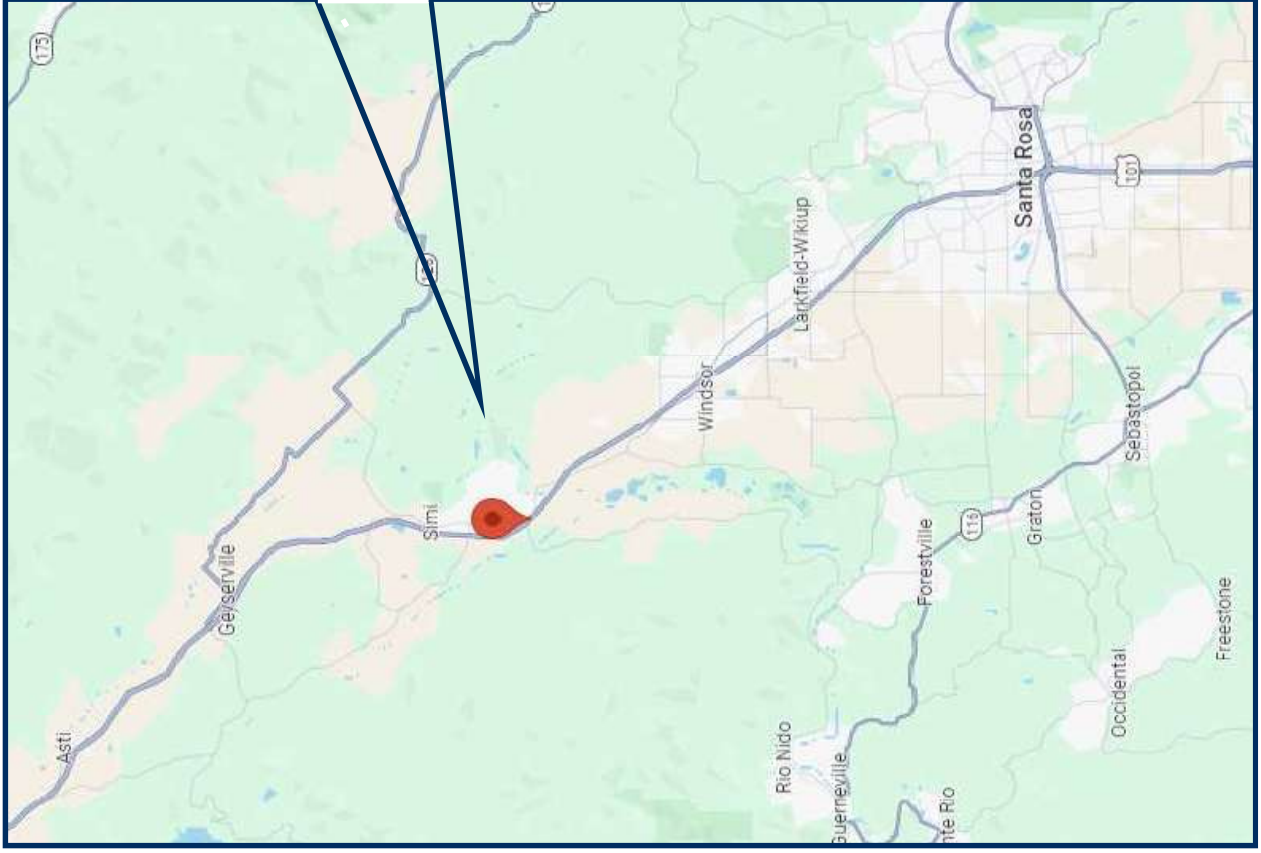
PHOTOS



The above information, while not guaranteed, has been secured from sources we believe to be reliable. This is not an offer to sell or lease and is subject to change or withdrawal. Any interested party should verify the status of the property and the information herein.



STREET MAP



The above information, while not guaranteed, has been secured from sources we believe to be reliable. This is not an offer to sell or lease and is subject to change or withdrawal. Any interested party should verify the status of the property and the information herein.



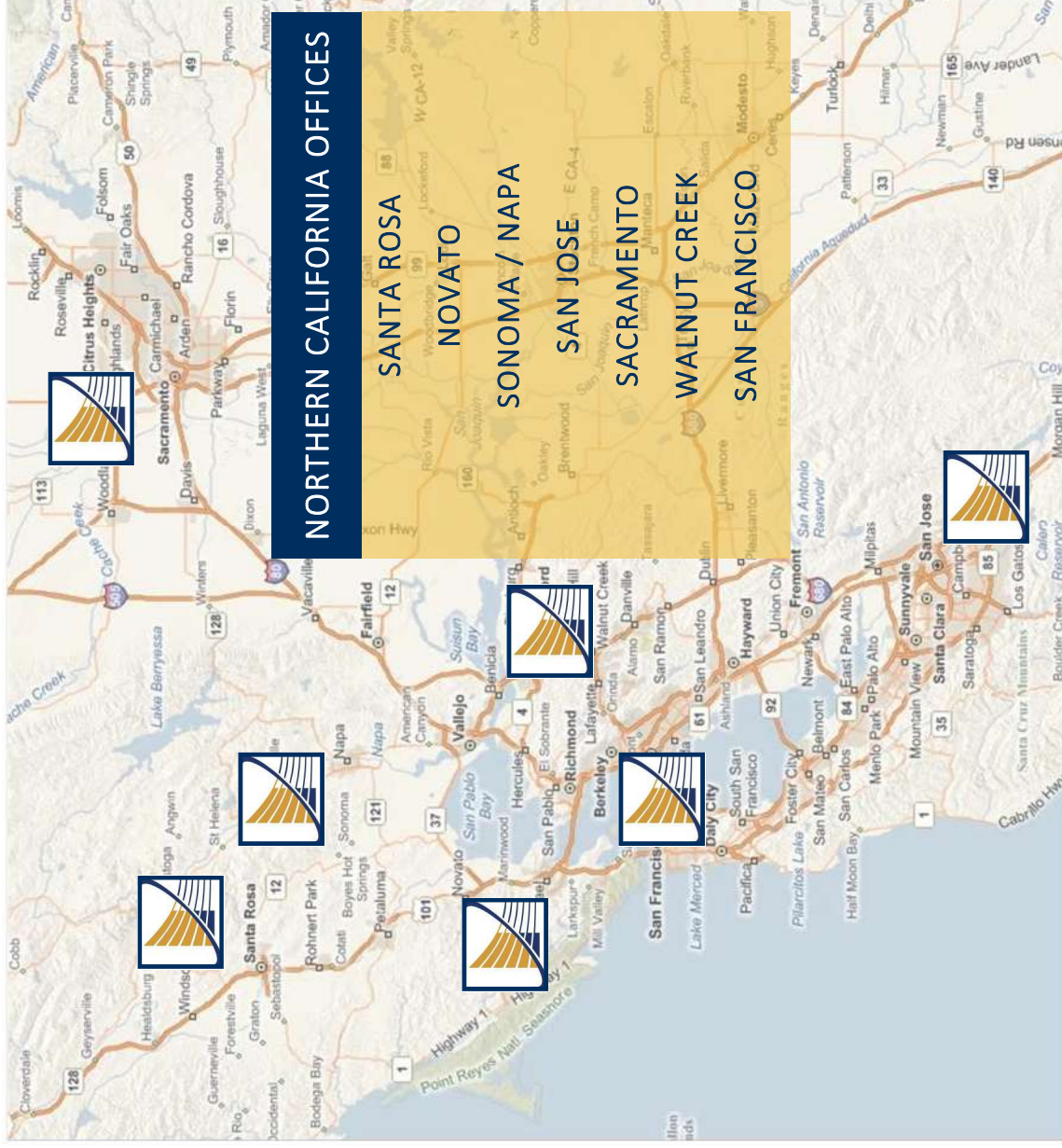
BROKER TEAM



Nick Abbott, CCIM
 CA BRE # 01357548
 Direct: 707-529-1722
 Office: 707-523-2700
 Email: Nabbott@NorthBayProp.com



William Severi, CCIM, CPM
 CA BRE # 01000344
 Direct: 707-360-4455
 Cell: 707-291-2722
 Email: William@NorthBayProp.com



North Bay Property Advisors

Santa Rosa Office
 2777 Cleveland Ave. Suite 110
 Santa Rosa, CA 95403
 707-523-2700
www.NorthBayProp.com