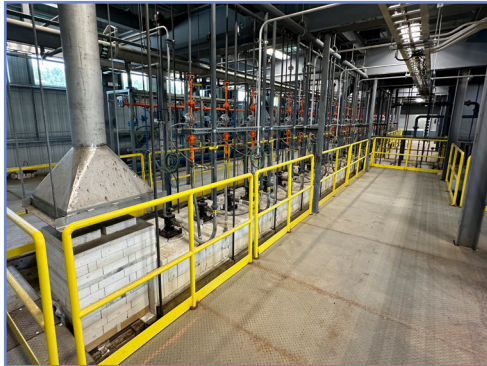


# Receivership Sale of Basalt Fiber Manufacturing Facility & Future Development Tract



**The Main Facility is located at 119 Metrolina Dr., Shelby, NC 28150**  
**Finished sq.ft.: 45,780+/- sits on 5.09+/- Acres - Zoned Industrial**



**The Future Development Tract is located at**  
**2045 Partnership Lane, Shelby, NC 28150**  
**Vacant land for future expansion;**  
**7.59+/- Acres - Zoned Industrial**



**PLEASE CONTACT US WITH ANY QUESTIONS OR TO MAKE AN OFFER**

**Rob Tramantano - (516) 902.9568**  
**rtramantano@greatneckrealttyco.com**

**Will Lilly - (704) 985.9300**  
**will@ironhorseauction.com**



**IRON HORSE**  
**COMMERCIAL**