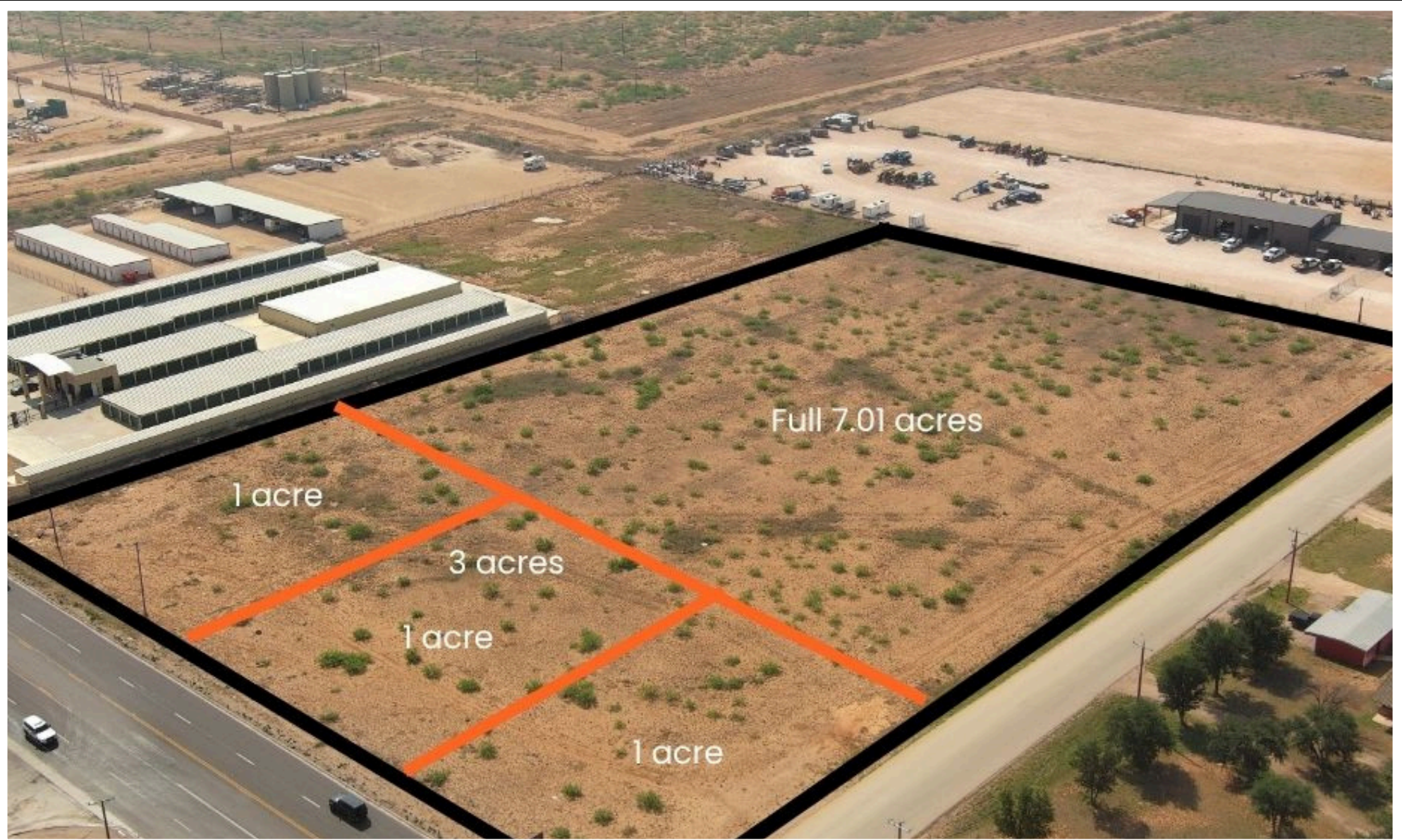




High Visibility Parcel on FM 307 for Sale

8910 FM 307, MIDLAND, TX 79706

the Real Estate Ranch



M. Caleb Randolph

432.994.8898
caleb@thewolfshieldcdg.com

Office:

432.688-8200
6 Desta Drive, Ste 1260,
Midland, TX 79705

Website:

<http://www.therealestateranch.com>

PROPERTY – 8910 FM 307 (3 ACRES)



OFFERING SUMMARY

| | |
|----------------|---------------|
| Sales Price | \$1,089,000 |
| Year Built | N/A |
| Building Sq Ft | N/A |
| Lot Size | 3 Acres |
| Zoning | In the County |

PROPERTY OVERVIEW

Exceptional opportunity to acquire 3 acres or 3 (1) acre tracts or the full 7.01 acres positioned on a highly visible hard corner long FM 307 in Greenwood, one of the fastest-growing submarkets in the Permian Basin. Strategically located in the main development strip of the Greenwood ISD. This site offers outstanding accessibility, strong oilfield traffic exposure, and immediate proximity to explosive residential and commercial expansion.

Tract 1 – \$348,480.00 (1 Acre)
 Tract 2 – \$348,480.00 (1 Acre)
 Tract 3 – \$392,040.00 (1 Acre corner)

Situated within the most desirable region of FM 307 in Greenwood, the property is surrounded by accelerating housing development, infrastructure investment, and expanding commercial activity driven by sustained Permian Basin growth. The location benefits from direct access to major transportation routes and serves one of the region's fastest growing populations.

This versatile tract is ideally suited for, fast food, retail, pharmacy, laundromat, industrial, office warehouse, service-based commercial, storage facility, oilfield support services, mixed-use development, or long-term investment hold strategies. With substantial frontage, excellent visibility, and strong regional demographics, the site presents a rare opportunity to secure premium commercial land in a rapidly appreciating market. The Full 7.01 Acres can be purchased for \$1,999,999. Call Caleb Randolph at 432-994-8898 for more information.

Property Highlights:

- 3 acres of frontage, 3 (1) Acre Tracts, or 7.01 Acres
- Prime Corner Location
- High Visibility Frontage on FM 307
- Located in the Greenwood Growth Corridor
- Minutes from Midland, Stanton, and Garden City
- Surrounded by New Residential Development
- Strong Traffic Counts & Regional Growth Drivers
- Greenwood continues to experience significant residential and commercial growth, fueled by infrastructure expansion and continued investment throughout Midland County.

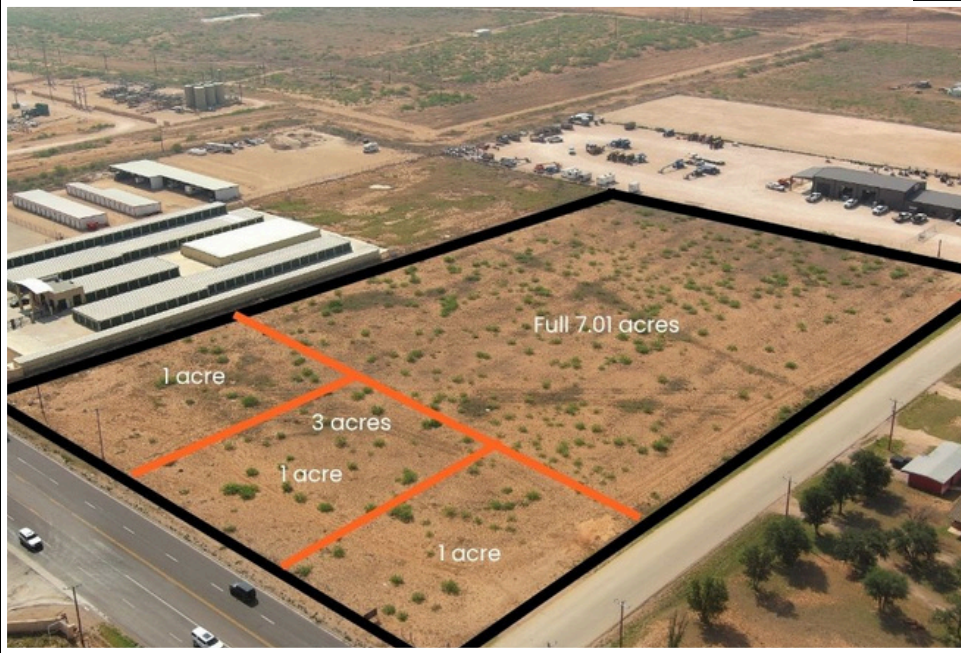
M. Caleb Randolph
 432.994.8898
 caleb@thewolfshieldcdg.com

Office:
 432.688-8200
 6 Desta Drive, Ste 1260
 Midland, TX 79705

Website:
<http://www.therealestateranch.com>



*The Real Estate
 Ranch*





The Real Estate Ranch

the
Real Estate
Ranch

High Visibility Parcel on FM 307 for Sale
8910 FM 307, MIDLAND, TX 79706



PRESENTED BY: M. CALEB RANDOLPH
(432) 994-8898

THE REAL ESTATE RANCH
(432) 688-8200

M. Caleb Randolph
432.994.8898
caleb@thewolfshieldcdg.com

Office:
432.688-8200
6 Desta Drive, Ste 1260,
Midland, TX 79705

Website:
<http://www.therealestateranch.com>